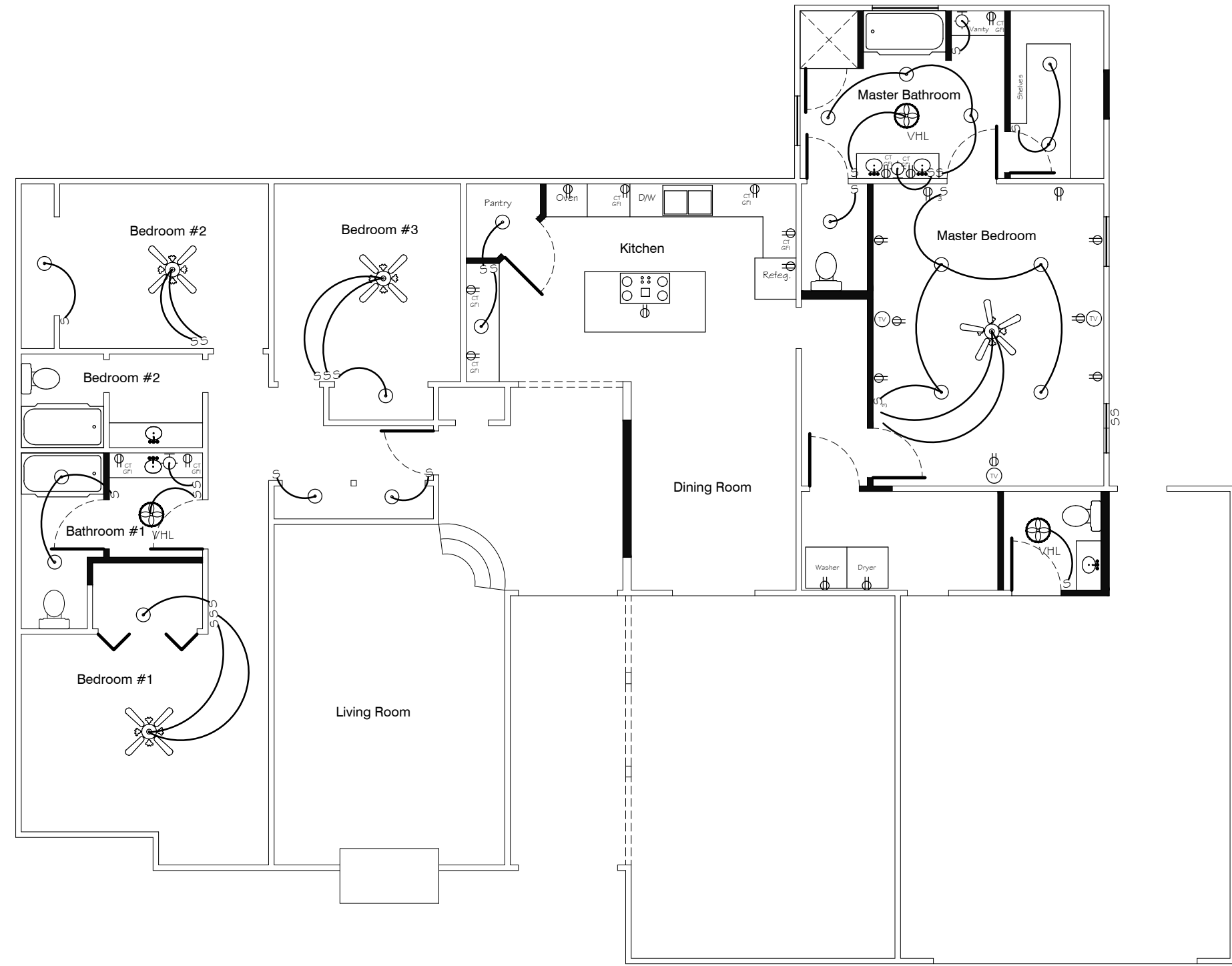


ELECTRICAL LEGEND

	GROUNDED DUPLEX RECEPTACLE
	DUPLEX RECEPTACLE, LETTERS INDICATE: GROUND FAULT CIRCUIT INTERRUPTER (GFI) WEATHER PROOF (WP) ABOVE COUNTER TOP MOUNTED (CT) 1' TYP. UNLESS OTHERWISE NOTED.
	GROUNDED DUPLEX RECEPTACLE FLUSH MOUNTED ON FLOOR
	GROUNDED QUADRAPLEX RECEPTACLE
	TELEPHONE OUTLET
	CABLE TV OUTLET,
	EXHAUST UNIT, STYLE TO BE CHOSEN BY OWNER. "XXX" INDICATES FEATURES SUCH AS A VENT, LIGHT OR HEATER. SEE DRAWINGS FOR FEATURES
	S SINGLE POLE LIGHT SWITCH
	S ₃ 3-WAY LIGHT SWITCH
	S ₄ 4-WAY LIGHT SWITCH
	S _{sp} SWITCH w/ VARIABLE SPEED CONTROL
	S _D SWITCH WITH DIMMER
	1x2 FLUORESCENT LIGHT FIXTURE WITH 3 T8 LAMP AND ELECTRONIC BALLAST
	2x4 FLUORESCENT LIGHT FIXTURE WITH 3 T8 LAMP AND ELECTRONIC BALLAST.
	2x4 FLUORESCENT LIGHT FIXTURE WITH 1 T8 LAMP ,ELECTRONIC BALLAST AND DAMP PROOF ENCLOSURE.
	1x4 FLUORESCENT LIGHT FIXTURE WITH 1 T8 LAMP AND ELECTRONIC BALLAST
	1x4 FLUORESCENT LIGHT FIXTURE WITH 1 T8 LAMP ,ELECTRONIC BALLAST AND DAMP PROOF ENCLOSURE.
	QUAD BULB LIGHT FIXTURE, 130V RATED BULBS
	SINGLE BULB LIGHT FIXTURE WITH PULL STRING, 130V RATED BULB
	MULTI-BULB LIGHT FIXTURE, 130V RATED BULBS
	INTERIOR WALL MOUNTED LIGHT FIXTURE, 130V RATED BULB
	EXTERIOR WALL MOUNTED LIGHT FIXTURE WITH DAMP PROOF ENCLOSURE, 130V RATED LAMP
	RECESSED CAN LIGHT
	4 BLADE CEILING FAN WITH LIGHT ASSEMBLY, 130V RATED BULBS
	5 BLADE CEILING FAN WITH LIGHT ASSEMBLY, 130V RATED BULBS
	5 BLADE CEILING FAN-DAMP AREA RATED
	OUTDOOR SECURITY LIGHT FIXTURE. THE LETTERS "MS" INDICATES IF THE FIXTURE IS EQUIP WITH A MOTION SENSOR, 130V RATED LAMPS
	SMOKE DETECTOR
	CARBON DETECTOR



- NOTE: 1) PLUG-IN AND LIGHT IN ATTIC FOR A/C
 2) LABOR EACH CIRCUIT IN ECH PANELBOARD INSTALLED.
 3) ROUTING OF ATTIC WIRING TO OMIT CROSSING OF ALL WALKWAYS. (AS PER OWNER)
 4) THE ELECTRICAL SERVICE LATERAL FROM THE UTILITY POWER SOURCE TO THE METER PAN LOCATED ON THE EXTERIOR WALL OF THE DWELLING UNIT SHALL BE INSTALLED UNDERGROUND AND SHALL COMPLY WITH THE ELECTRICAL SERVICE STANDARDS OF THE SERVING UTILITY.
 5) METER PAN, SERVICE ENTRANCE CONDUCTORS AND MAIN BREAKER PANELBOARD SHALL BE SIZED FOR THE CALCULATED ELECTRICAL LOAD OF THE DWELLING UNIT AND EXISTING BUILDING ON LOT, BUT SHALL NOT BE RATED LESS THAN 200 AMPS.
 6) PROVIDE TEMPORARY ELECTRIC SERVICE AS REQUIRED BY THE BUILING CONTRACTOR.
 7) ALL FIXTURE TYPES AND LOCATIONS FOR FIRST FLOOR OR ATTIC ARE TO BE VERIFIED BY OWNER.
 8) OUTDOOR SECURITY TO BE MOUNTED UNDER BOXING.
 9) TV, PHONE AND INTERNERT LOCATIONS BY OWNER.

Electrical Layout

1/4" = 1'-0"

Date:	Remarks:	App'd:

A RESIDENTIAL PLAN
 FOR
Shane Lee Fauchaux
 305 South Central Blvd.
 Chauvin, Louisiana

Date: 1/June/21	Designed:	E1
Scale: 1/4" = 1'-0"	Drawn: RJH	
Job No.:	Checked:	Sheet No.:
		1 of 1

Drawing File: shane.DWG