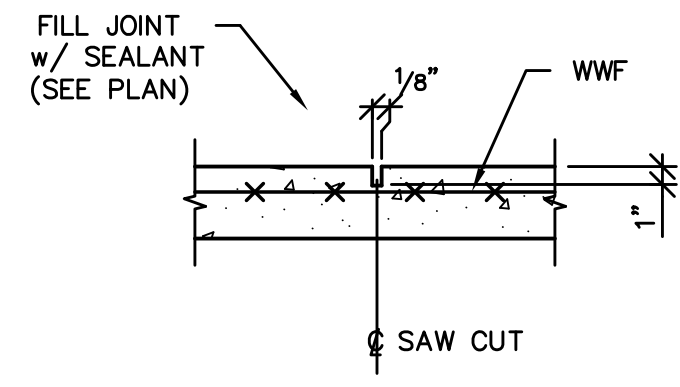
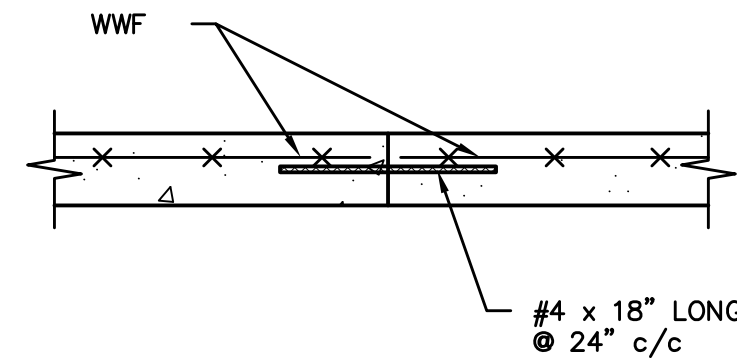


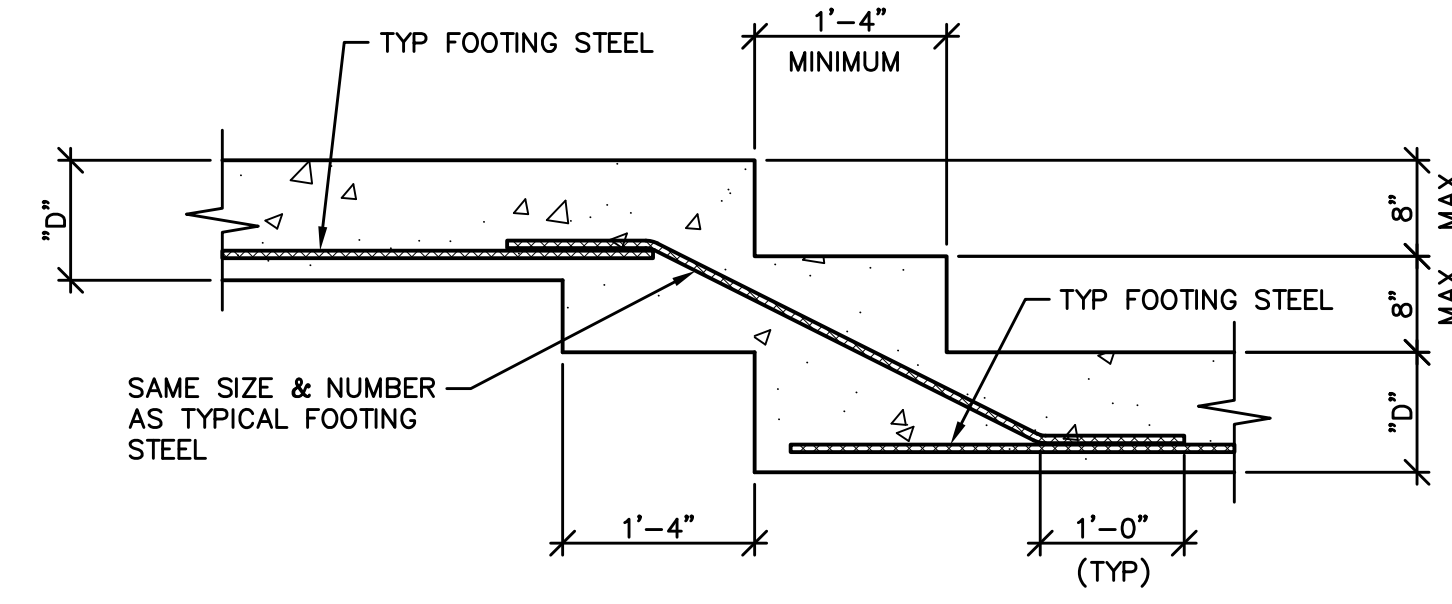
1 DETAIL
SCALE: NONE
FLOOR CONTROL JOINT



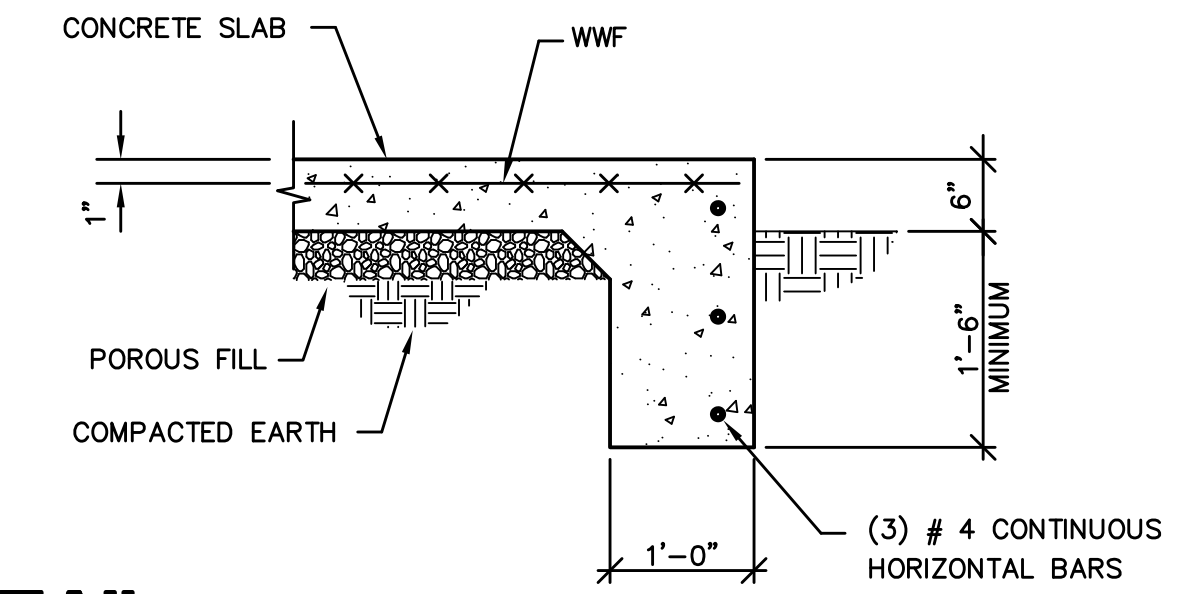
2 DETAIL
SCALE: NONE
FLOOR CONSTRUCTION JOINT



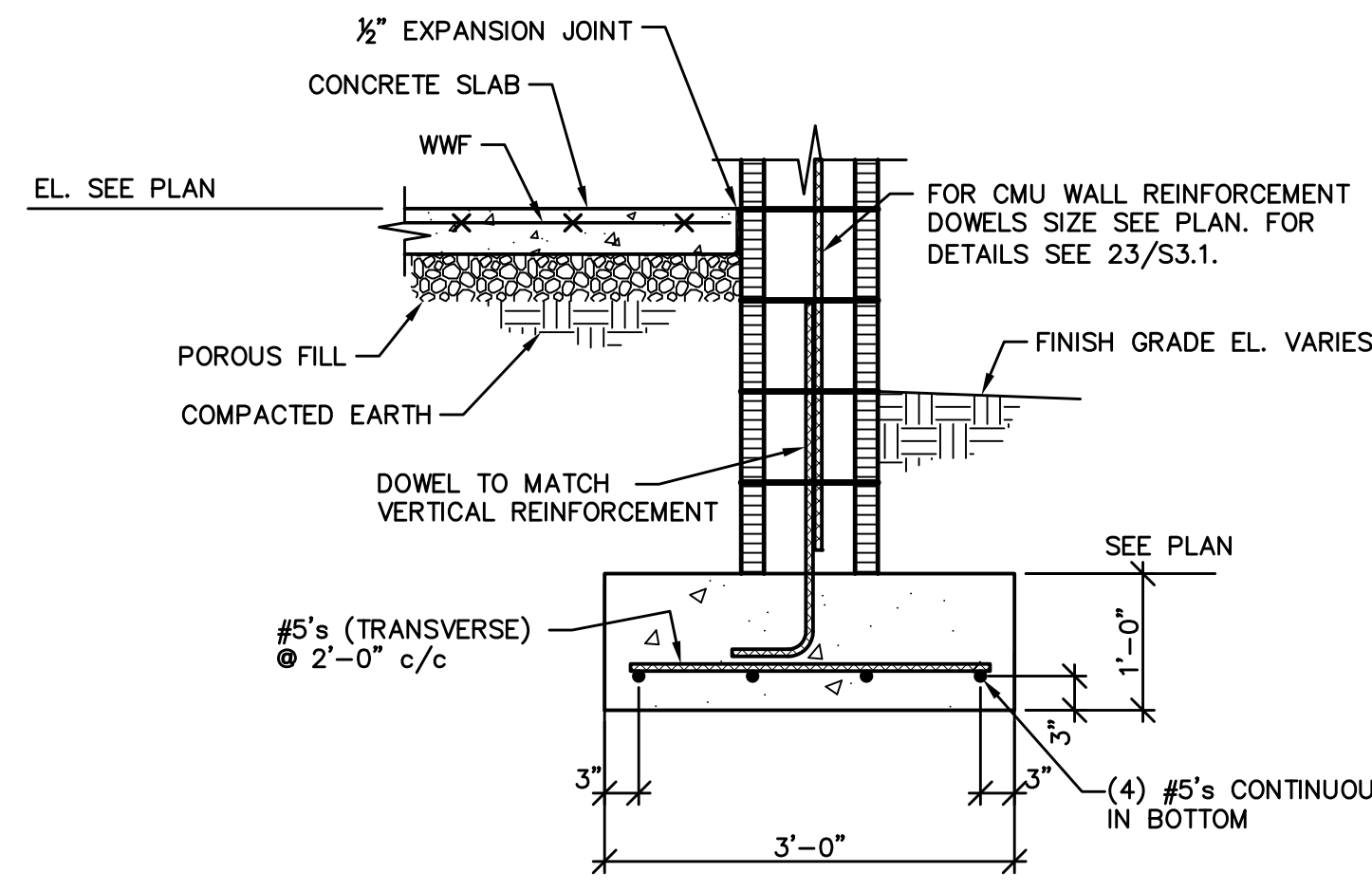
3 SECTION
SCALE: NONE
WALL FOOTING STEP



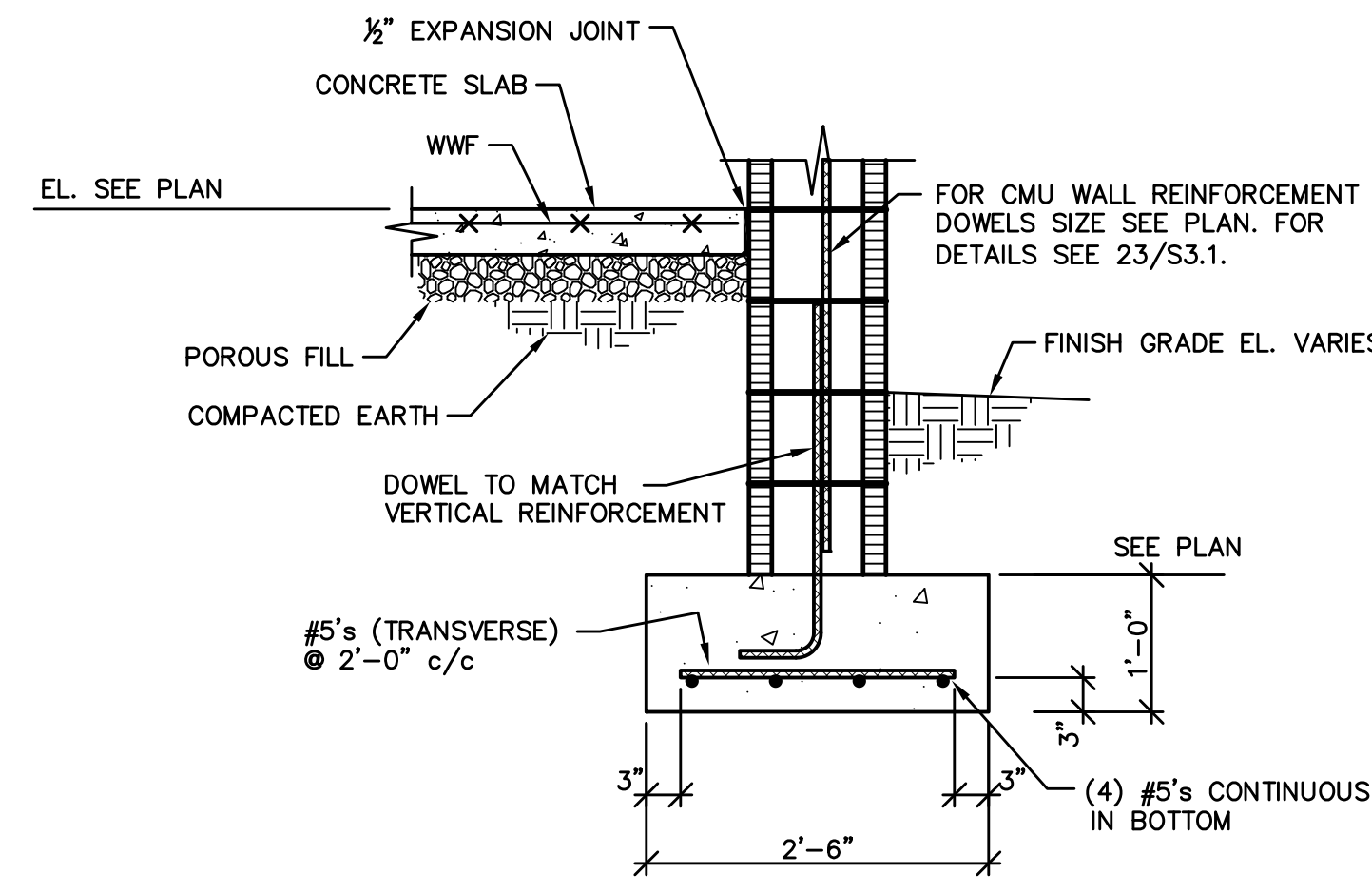
4 DETAIL
SCALE: NONE
TURN DOWN



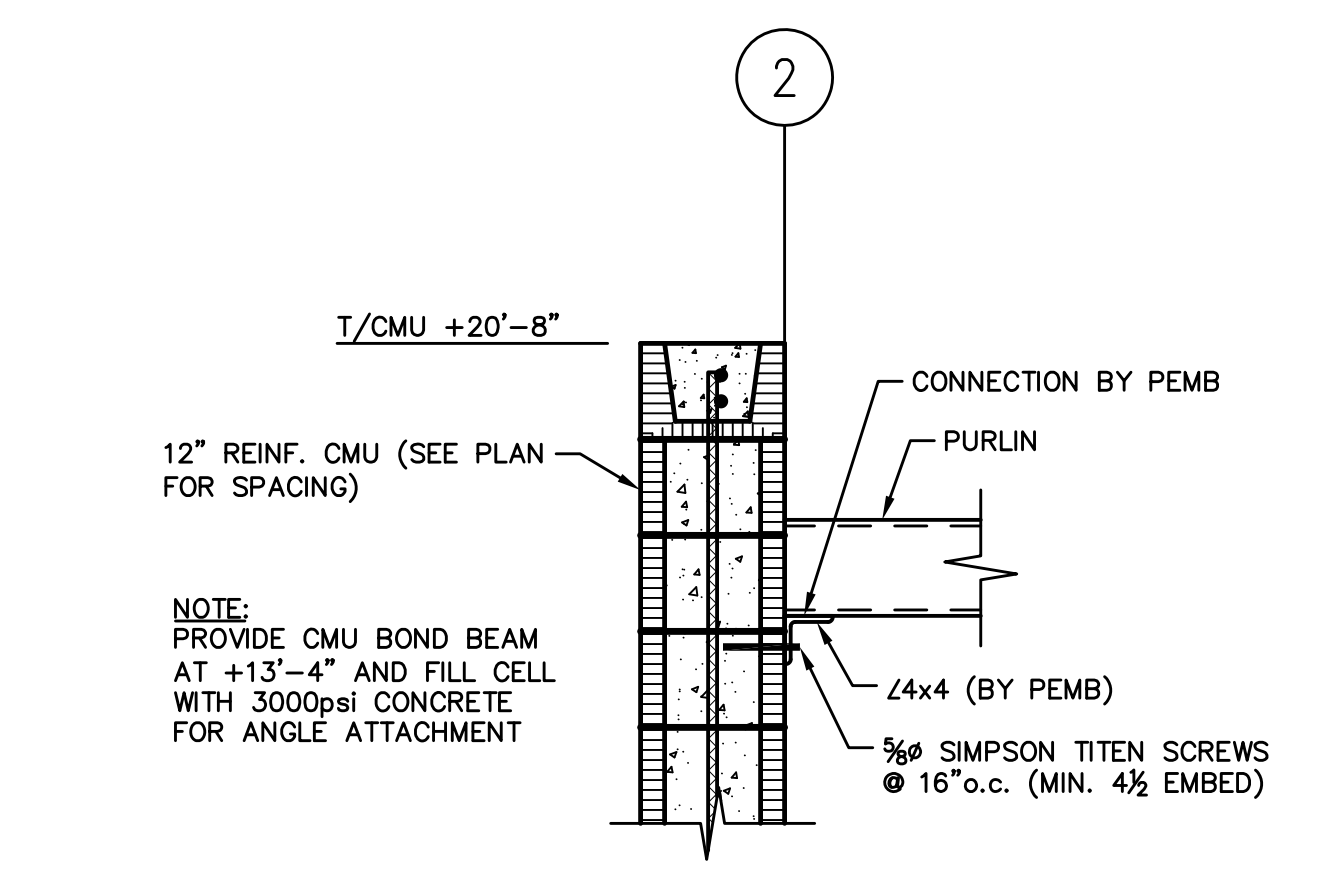
5 SECTION
SCALE: NONE
EXTERIOR CMU WALL FOOTING



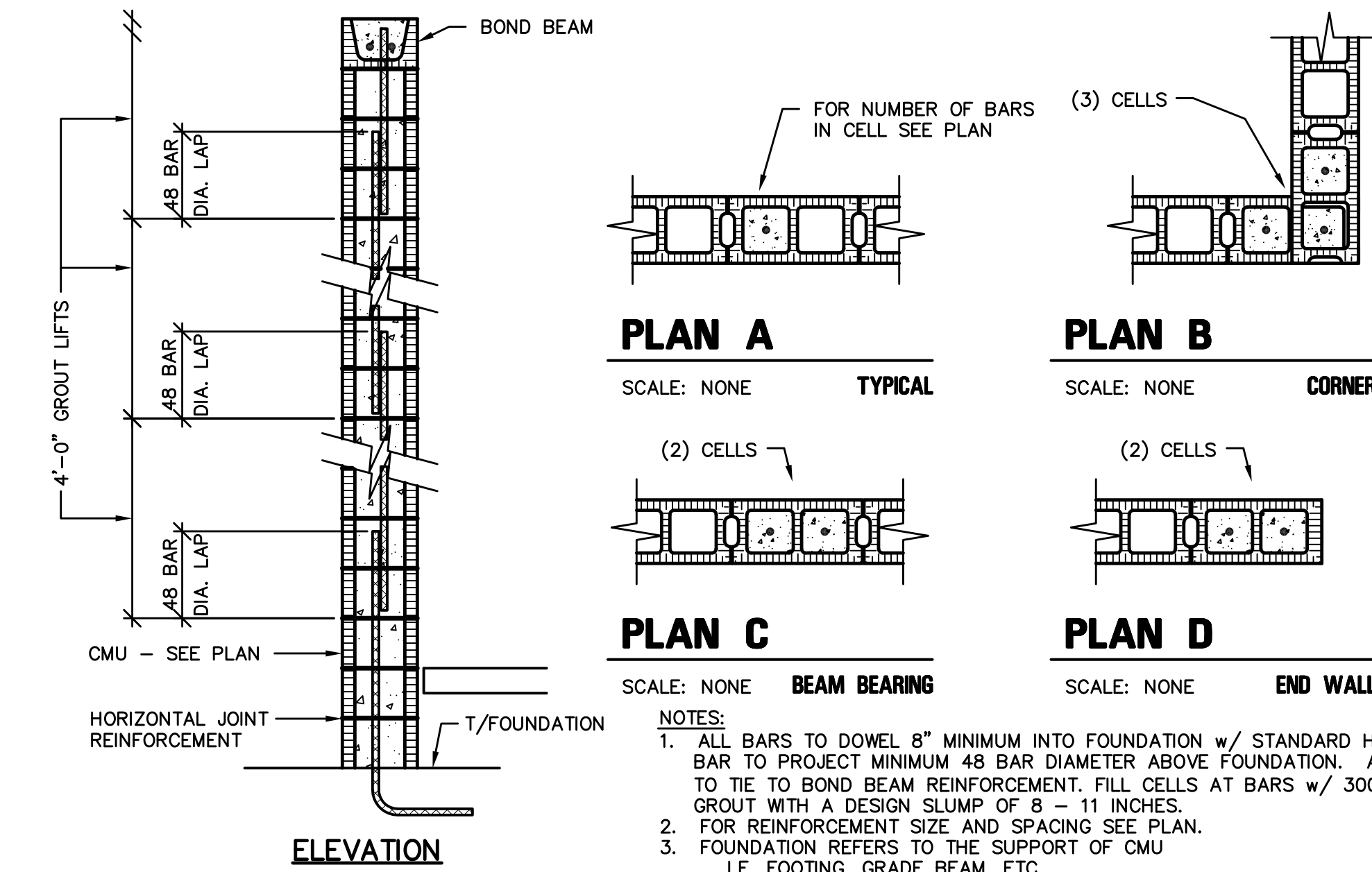
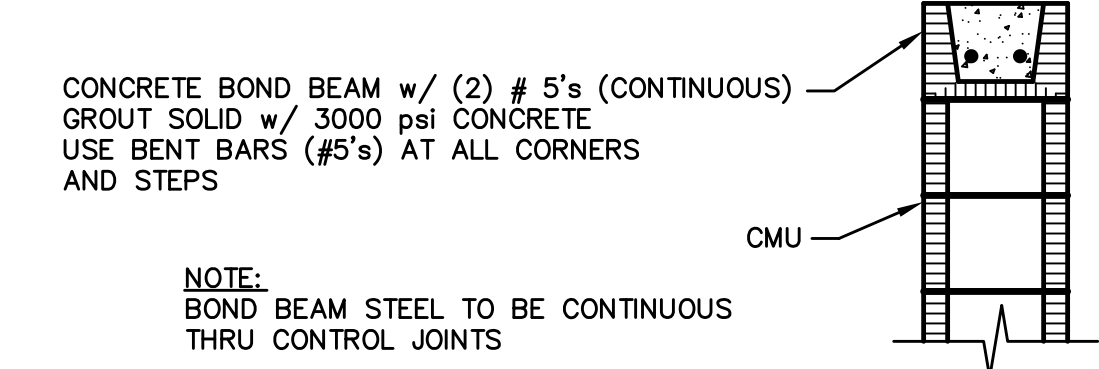
6 SECTION
SCALE: NONE
EXTERIOR CMU WALL FOOTING



7 DETAIL
SCALE: 3/4\"/>



8 DETAIL
SCALE: NONE
CMU BOND BEAM



PLAN A
SCALE: NONE
TYPICAL

PLAN B
SCALE: NONE
CORNER

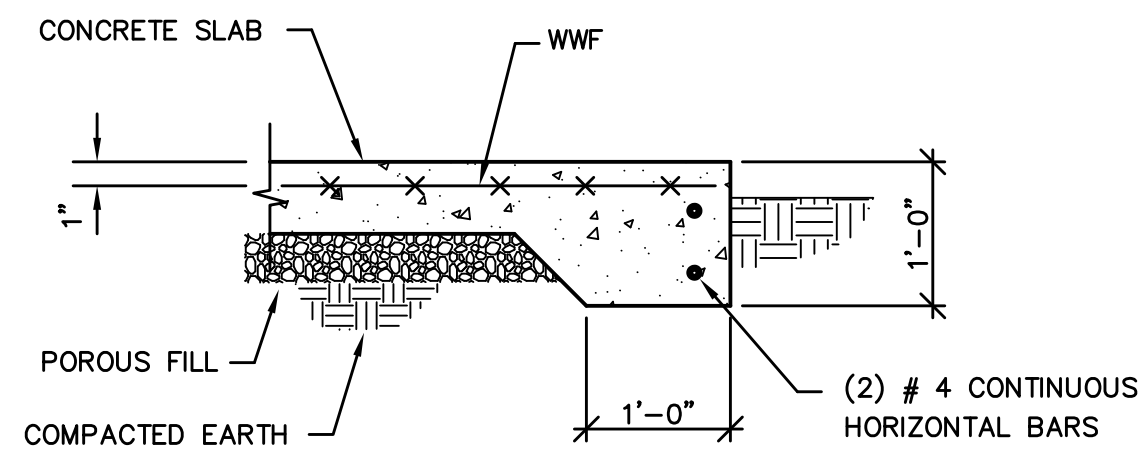
PLAN C
SCALE: NONE
BEAM BEARING

PLAN D
SCALE: NONE
END WALL

NOTES:

1. ALL BARS TO DOWEL 8" MINIMUM INTO FOUNDATION w/ STANDARD HOOK BAR TO PROJECT MINIMUM 48 BAR DIAMETER ABOVE FOUNDATION. ALL BARS TO TIE TO BOND BEAM REINFORCEMENT. FILL CELLS AT BARS w/ 3000 psi CONCRETE GROUT WITH A DESIGN SLUMP OF 8 - 11 INCHES.
2. FOR REINFORCEMENT SIZE AND SPACING SEE PLAN.
3. FOUNDATION REFERS TO THE SUPPORT OF CMU I.E. FOOTING, GRADE BEAM, ETC....
4. MASONRY OPENINGS (WINDOWS, MECHANICAL OPENINGS, ETC.) MAY INTERRUPT REINFORCEMENT. TO CONTINUE REINFORCEMENT DOWEL OUT OF HEADER.
5. FOR MASONRY VENEER TIE REQUIREMENTS, SEE ARCHITECTURAL SPECIFICATIONS.

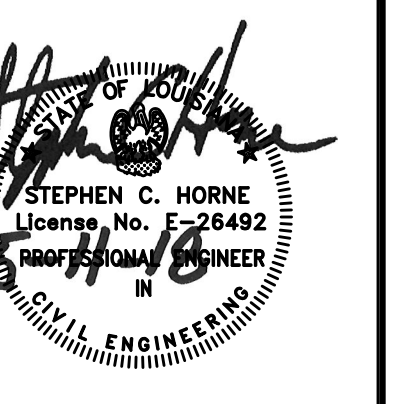
9 DETAIL
SCALE: NONE
BALER CANOPY TURN DOWN



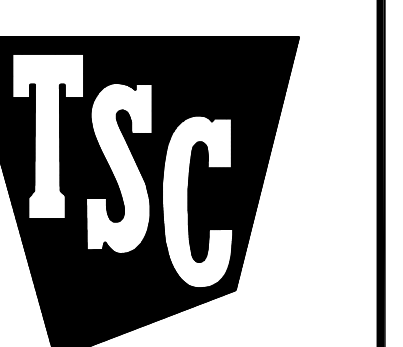
23 DETAIL
SCALE: NONE
CMU WALL REINFORCEMENT

P.O. Box 529
22615 Highway 59 North
Robertsdale, Alabama 36567
Office: 251.947.3864
Fax: 251.947.3138

ADAMS STEWART ARCHITECTS, LLC
Architecture, Planning
Interiors, Construction Administration



Tractor Supply Company
2083 Gause Blvd West, Slidell Louisiana 70460



TRACTOR SUPPLY COMPANY

| DATE | DESCRIPTION |
|------------------|-----------------------|
| January 29, 2018 | ISSUE FOR SCHEDULE I |
| March 12, 2018 | ISSUE FOR PERMIT |
| MAY 11, 2018 | ISSUE FOR SCHEDULE II |

PROJECT NO: 17-061 / S0318

SHEET NO:
SECTIONS
AND
DETAILS
S3.1