

ALL DIMS. IN' - OFFICE WAREHOUSE AS SHOWN. CONTRACTOR TO VERIFY ALL DIMS. BEFORE START OF WORK.

WINDOW SCHEDULE				
MK	WIDTH	HEIGHT	FRAME MAT	NOTES
W01	3'-0"	6'-0"	VINYL	WINDOW INSULATED

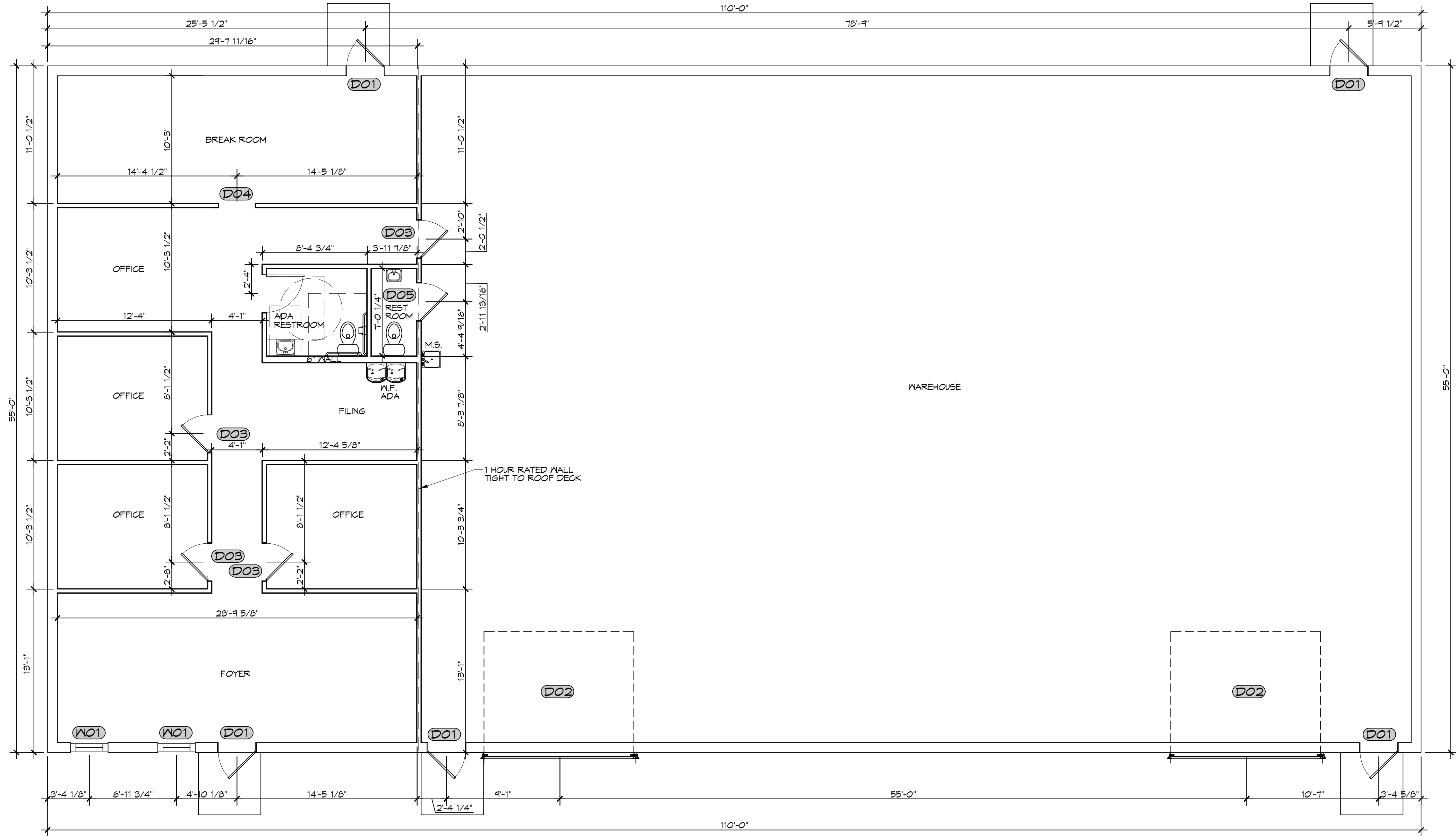
DOOR SCHEDULE							
MK	WIDTH	HEIGHT	THK	DOOR MAT	FRAME	FR	REMARKS
D01	3'-0"	6'-8"	1-3/4"	STEEL	MTL	NR	EXTERIOR DOOR
D02	12'-0"	14'-0"	-	STEEL	MTL	NR	ROLL UP DOOR
D03	3'-0"	6'-8"	1-3/4"	WOOD	MTL	45 MIN	IV CLOSURE
D04	3'-0"	7'-0"	N/A	-	-	NR	CASED OPENING
D05	3'-0"	6'-8"	1-3/4"	WOOD	MTL	45 MIN	IV CLOSURE

- ### GENERAL NOTES
- INSULATION AND INSULATION ASSEMBLIES SHALL MEET THE REQUIREMENTS OF IBC 2021 SECTION 703.
  - CONCEALED INSULATION SHALL HAVE A FLAME SPREAD OF 0-25 AND SMOKE DEVELOPED INDEX OF 0-450.
    - FACINGS SHALL COMPLY WITH IBC 2021.
  - ALL MATERIALS SHALL BE NEW AND UL LISTED.
  - NO WORK SHALL BE CONCEALED UNTIL APPROVED BY LOCAL INSPECTORS.
  - CONSTRUCTION SHALL COMPLY WITH ALL PARISH, STATE, AND LOCAL CODES.
  - CONTRACTOR TO GUARANTEE WORK FOR ONE YEAR FROM DATE OF SUBSTANTIAL COMPLETION.
  - CONTRACTOR SHALL FURNISH WATER AND POWER FROM EXISTING SOURCES.
  - EXTERIOR CAULKING SHALL BE THICKAL CAULK.
  - PAINT SHALL BE SHERWIN WILLIAMS OR EQUIVALENT AND APPROPRIATE FOR THE SUBSTRATE TO WHICH IT IS APPLIED AS RECOMMENDED BY PAINT MANUFACTURER. ALL WORK TO RECEIVE THREE COATS (ONE PRIMER COAT, TWO FINISH COATS) UNLESS OTHERWISE RECOMMENDED BY PAINT MANUFACTURER. COLORS TO BE SELECTED BY OWNER.
  - PROVIDE CLEANUP ON A REGULAR BASIS. NO TRASH SHALL BE STORED INSIDE BUILDING PREMISES.
  - USE 2x6 STUDS, OR TWO 2x4 STAGGERED STUDS WITH 2x6 BILL PLATE AT ALL WALLS WHERE 4" PIPE IS INDICATED. SEE PLUMBING RISER DIAGRAM FOR PIPE SIZE.
  - PROVIDE GALVANIZED METAL PAN WITH DRAIN AT ALL WATER HEATERS.
  - ALL FLOORING SHALL MEET OR EXCEED ADA GUIDELINES REQUIREMENTS FOR SLIP RESISTANCE.
  - INTERIOR LOCKS ON DOORS IN MEANS OF EGRESS SHALL NOT REQUIRE THE USE OF A KEY, SPECIAL KNOWLEDGE, OR SPECIAL DEVICE TO OPEN IN THE DIRECTION OF EGRESS. ALL DOORS SHALL HAVE LEVER TYPE HANDLES.
  - INTERIOR WALLS AND CEILING SHALL HAVE A FLAME SPREAD OF 0-200 AND A SMOKE DEVELOPMENT RATING OF 0-450; PER IBC 2015.
  - ALL WORK SHALL COMPLY WITH THE LATEST EDITION OF ALL LOCAL, STATE, AND NATIONAL CODES COVERING THE TYPE OF WORK BEING PERFORMED.
  - PROVIDE PORTABLE FIRE EXTINGUISHERS IN ACCORDANCE WITH NFPA 101. SEE APPENDIX "E" OF NFPA 101 FOR DISTRIBUTION OF EXTINGUISHERS.
  - ALL FIRE WALLS SHALL EXTEND TIGHT TO ROOF DECK AND BE SEALED WITH AN APPROVED FIRE CAULK.
  - ALL ELECTRICAL, MECHANICAL, AND PLUMBING MATERIALS PENETRATING FIRE WALLS SHALL BE FIRE CALKED (PENETRATIONS THROUGH RATED CONSTRUCTION SHALL BE SEALED WITH A MATERIAL CAPABLE OF PREVENTING THE PASSAGE OF FLAMES AND HOT GASES WHEN TESTED IN ACCORDANCE WITH ASTM-E814.) SEAL ALL JOINTS, PENETRATIONS, AND ALL OTHER SUCH OPENINGS IN THE BUILDING ENVELOPE THAT ARE SOURCES OF AIR LEAKAGE.
  - SERVICE COUNTERS SHALL HAVE AN ACCESSIBLE WRITING SURFACE IN COMPLIANCE WITH ADAAG ACCESSIBILITY GUIDELINES 2010, SECTION 902.3.

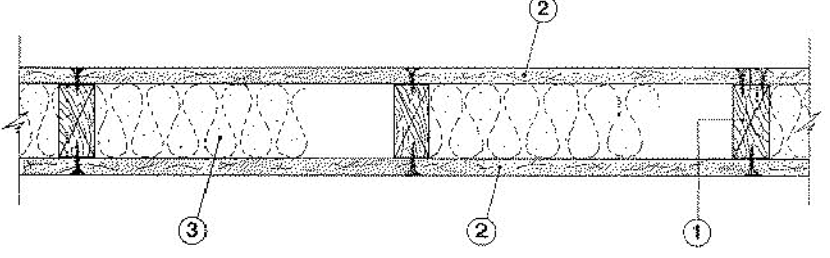
NOTES: ALL DOORS ARE TO BE FITTED WITH COMMERCIAL GRADE HARDWARE AND HANDLES.

ALL EXTERIOR WINDOWS AND DOOR ASSEMBLIES TO BE RATED FOR 140 MPH WINDS AND SHALL BE MISSILE IMPACT RESISTANT.

DOORS IN A REQUIRED MEANS OF EGRESS SERVING ANY ASSEMBLY AREA HAVING AN OCCUPANT LOAD OF 50 OR MORE PERSONS SHALL NOT BE EQUIPPED WITH A LATCH OR LOCK OTHER THAN PANIC HARDWARE OR FIRE EXIT HARDWARE.



Fire Resistance Ratings - ANSI/UL 263  
 Design No. U333  
 December 17, 2004  
 Bearing Wall Rating - 1 HR.  
 Finish Rating - 23 min.



- Wood Studs - Nom 2 by 4 in., spaced 16 in. OC effectively cross braced.
  - Gypsum Board\* - 5/8 in. thick, 4 ft wide, applied either vertically or horizontally, screw attached to studs and plates with 1-1/4 in. long Type W steel screws, spaced 12 in. OC.
    - AMERICAN GYPSUM CO - Types AG-C.
    - BFB AMERICA INC - ProRoc Type C.
    - BFB CANADA INC - ProRoc Type C.
    - CANADIAN GYPSUM COMPANY - Types C, IP-X2, IPC-AR.
    - G-P GYPSUM CORP, SUB OF GEORGIA-PACIFIC CORP - Type 5.
    - LAFARGE NORTH AMERICA INC - Types LGFC-C, LGFC-C/A.
    - NATIONAL GYPSUM CO - Types FSK-C, FSN-C, FSN-G.
    - PABCO BUILDING PRODUCTS L L C, DBA PABCO GYPSUM - Type C or PG-C.
    - STANDARD GYPSUM L L C - Type SG-C.
    - TEMPLE-INLAND FOREST PRODUCTS CORP - Type TG-C.
    - UNITED STATES GYPSUM CO - Types C, IP-X2, IPC-AR.
    - USG MEXICO S A DE C V - Types C, IP-X2, IPC-AR.
  - Batts and Blankets\* - (Optional) - Mineral wool insulation, partially or completely filling stud cavity.
    - THERMAFIBER INC - Type SAFB.
    - 3A. Fiber, Sprayed\* - As an alternate to Batts and Blankets (Item 3) - Spray applied cellulose material. The fiber is applied with water to completely fill the enclosed cavity in accordance with the application instructions supplied with the product. Nominal dry density of 3.0 lb/ft<sup>3</sup>. Alternate application method: The fiber is applied with U.S. GreenFiber LLC Type AD100 hot melt adhesive at a nominal ratio of one part adhesive to 6.6 parts fiber to completely fill the enclosed cavity in accordance with the application instructions supplied with the product. Nominal dry density of 2.5 lb/ft<sup>3</sup>. U S GREENFIBER L L C - Cocoon2 Stabilized or Cocoon-FRM (Fire Rated Material)
    - 3B. Fiber, Sprayed\* - As an alternate to Batts and Blankets (Item 3) and Item 3A - Spray applied cellulose insulation material. The fiber is applied with water to interior surfaces in accordance with the application instructions supplied with the product. Applied to completely fill the enclosed cavity. Minimum dry density of 4.3 pounds per cubic ft.
  - Joints and Nailheads - Wallboard joints covered with paper tape and joint compound. Screw heads covered with joint compound.
- \*Bearing the UL Classification Mark

**3 FLOOR PLAN**  
 SCALE: 3/16" = 1'-0"

**DAMMON ENGINEERING, INC.**  
 LOUISIANA & MISSISSIPPI  
 Chief Engineer: Brian Mistich, PE  
 554 Old Spanish Trail  
 Slidell, LA 70458  
 www.dammonengineering.com  
 info@dammonengineering.com  
 PH: 985.649.8832

REVISIONS	DATE
# DESCRIPTION	



NEW OFFICE WAREHOUSE

**LENIS A/C**

3904 COAST BOULEVARD  
 SUITE 101  
 SLIDELL, LA 70460

JOB No: 1-22-2026  
 DATE: 1-22-2026  
 DRAWN BY: CKD  
 CHECKED BY: JMS

SHEET TITLE:  
**FLOOR PLAN**

DRAWING NUMBER:  
**A101**

SHEET No: 5 of 12