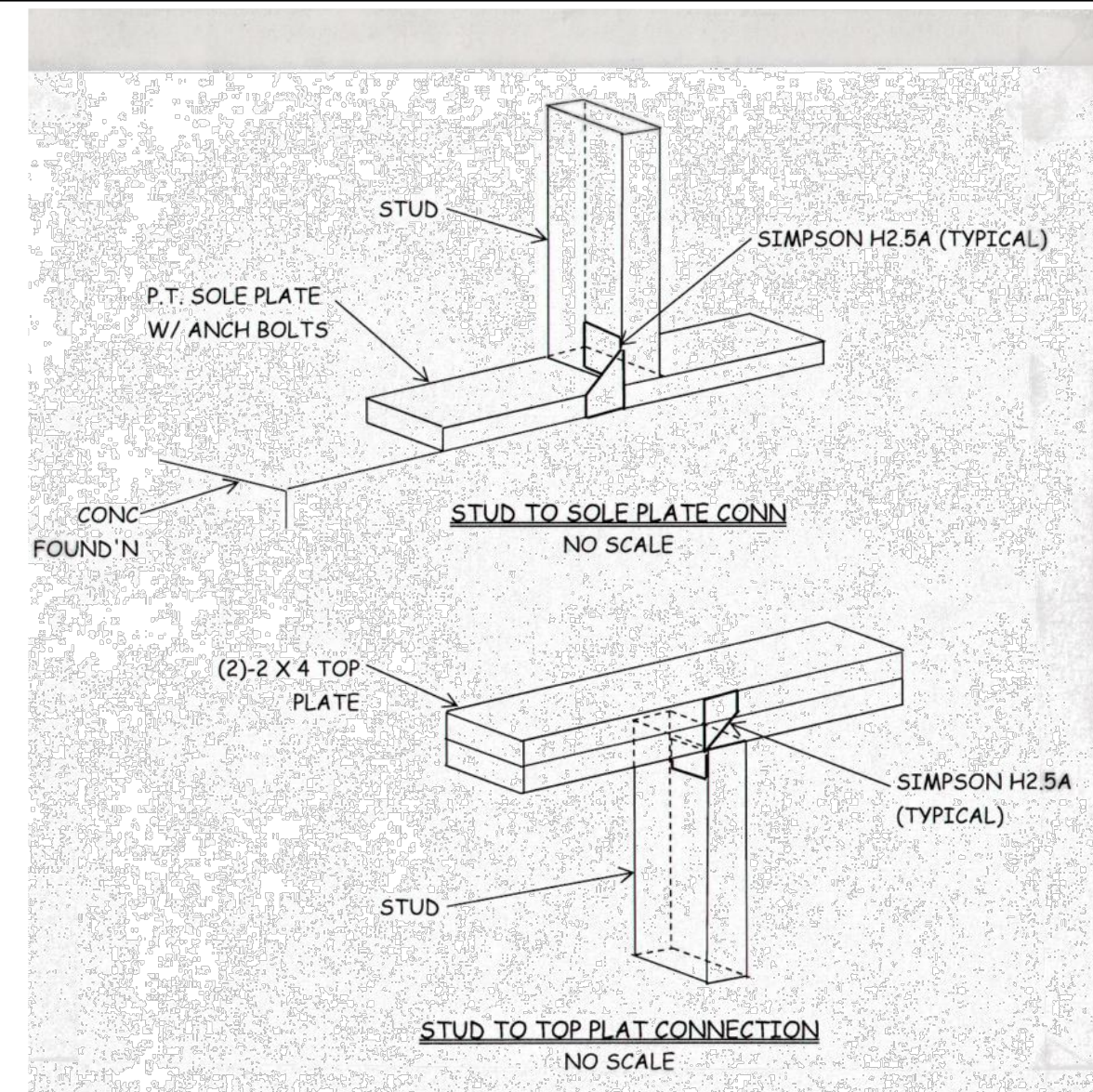


NOTES:

- THE ACCOMPANYING DRAWINGS ARE THOSE OF A CUSTOM DESIGNED RESIDENTIAL STRUCTURE AND IS SITE SPECIFIC.
 - THE BUILDING WAS DESIGNED FOR 130 MPH WIND ZONE.
 - THE DESIGNER INFORMATION IS SHOWN ON THIS SHEET.
- THE ACCOMPANYING FOUNDATION PLAN IS SITE SPECIFIC.
- THE CRITERIA USED FOR THE DESIGN OF THE BUILDING IS STRUCTURE SPECIFIC.
 - THE STRUCTURE IS DESIGNED FOR 130 MPH WIND SPEED.
 - THE FLOOD ZONE WAS CONSIDERED.
 - THE DATA FROM THE LATEST EDITION OF THE "WOOD FRAME CONSTRUCTION MANUAL" AND THE "INTERNATIONAL RESIDENTIAL CODE FOR ONE AND TWO FAMILY DWELLINGS" WAS CONSIDERED.
- FRAMING AND CONNECTION DETAILS SHOWN ON THIS SHEET:
 - ANCHOR BOLT (BOTTOM SOLE PLATE TO FOUNDATION) @ EXTERIOR WALL.
 - ANCHOR METHOD (BOTTOM SOLE PLATE TO FOUNDATION) @ INTERIOR WALL.
 - CORNER AND SHEARWALL HOLD DOWNS.
 - COLUMN CONNECTIONS.
 - SHEARWALL(S) AT EITHER SIDE OF GARAGE DOOR(S).
 - BOTTOM PLATE TO STUD.
 - PACK/JACK STUD TO HEADER @ EXTERIOR AND INTERIOR WALLS.
 - HEADERS.
 - STUD TO TOP PLATE.
 - TOP PLATE TO RAFTERS.
 - WALL TO WALL ASSEMBLY.
 - FRAMING AND BRACING TO GABLE WALLS.
 - WALL SHEATHING.
 - EXTERIOR CLADDING (VINYL SIDING APPLICATION AND FASTENING).
 - ROOF SHEATHING.
 - ROOF UNDERLAYMENT APPLICATION.
 - ROOF COVERING (SHINGLE APPLICATION AND FASTENING).
 - WINDBORNE DEBRIS PROTECTION AND FASTENING.
 - THERMAL COMPONENT CRITERIA.
 - INSULATION R-VALUES.
- IT IS THE CONTRACTORS RESPONSIBILITY TO INSTALL ALL COMPONENTS PER THE MANUFACTURERS SPECIFIC WRITTEN INSTRUCTIONS AND DIRECTIONS. ALL INSTALLATIONS SHALL BE DONE PER LOCAL CODES AND STANDARD PRACTICES.



JACK STUD REQUIREMENTS

INTERIOR LOAD BEARING WALLS

HEADER SUPPORTING	HEADER SPAN (IN FEET)	ROOF SPAN											
		12- FEET				24- FEET				36- FEET			
HDR WIDTH		3"	4 1/2"	5"	6 1/2"	3"	4 1/2"	5"	6 1/2"	3"	4 1/2"	5"	6 1/2"
		NUMBER OF JACK STUDS REQUIRED											
ROOF & CEILING	2	1	1	1	1	1	1	1	1	1	1	1	1
	4	1	1	1	1	1	1	1	1	1	1	1	1
	6	1	1	1	1	1	1	1	1	1	1	1	1
	8	1	1	1	1	2	1	1	1	2	2	2	1
	10	1	1	1	1	2	2	1	1	3	2	2	2
	12	1	1	1	1	2	2	2	1	3	2	2	2
	14	2	1	1	1	3	2	2	2	4	3	3	2
	16	2	1	1	1	3	2	2	2	4	3	3	2
ROOF, CEILING & ONE CENTER BEARING FLOOR	2	1	1	1	1	1	1	1	1	2	1	1	1
	4	1	1	1	1	2	1	1	1	3	2	2	2
	6	2	1	1	1	3	2	2	2	4	3	3	2
	8	2	2	1	1	3	2	2	2	5	3	3	3
	10	2	2	2	1	4	3	3	2	6	4	4	3
	12	3	2	2	2	5	3	3	3	7	5	4	4
	14	3	2	2	2	5	4	3	3	8	5	5	4
	16	4	3	2	2	6	4	4	3	9	6	5	5

EXT LOAD BEARING WALLS - EXPOSURE-B

HEADER SUPPORTING	HEADER SPAN (IN FEET)	HEADER WIDTH			
		3"	4 1/2"	5"	6 1/2"
	2	1	1	1	1
	4	1	1	1	1
	6	2	2	2	2
	8	2	2	2	2
	10	3	2	2	2
	12	3	2	2	2
	14	4	3	2	2
	16	4	3	3	2
ROOF, CEILING & ONE CENTER BEARING FLOOR	2	1	1	1	1
	4	2	1	1	1
	6	2	2	2	1
	8	3	2	2	2
	10	4	3	2	2
	12	4	3	3	2
	14	5	3	3	3
	16	5	4	3	3

EXPLANATION OF HEADER WIDTHS:
 3" = (2)-2X" ± 4 1/2" ± (3)-2X" ± 5", 6.5" ± (4)-2X" ± ALL WITH 1/2" PLYWOOD SPACERS BETWEEN.

MISCELLANEOUS HEADER DATA

HEADER SPANS FOR INTERIOR LOAD BEARING WALLS*

HDR SUPPORTING	SIZE	12-Ft W BLDG	24-Ft W BLDG	36-Ft W BLDG
SINGLE STORY (CENTER BEARING)	(2) 2 X 4's	4'-4"	3'-1"	2'-6"
	(2) 2 X 6's	6'-5"	4'-6"	3'-8"
	(2) 2 X 8's	8'-1"	5'-9"	4'-8"
	(2) 2 X 10's	9'-11"	7'-0"	5'-9"
	(2) 2 X 12's	11'-5"	8'-1"	6'-7"
	(3) 2 X 8's	10'-3"	7'-2"	5'-10"
TWO STORY ONLY (CENTER BEARING)	(3) 2 X 10's	12'-5"	8'-9"	7'-2"
	(3) 2 X 12's	14'-4"	10'-2"	8'-3"
	(4) 2 X 8's	11'-6"	8'-3"	6'-9"
	(4) 2 X 10's	14'-4"	10'-1"	8'-3"
	(4) 2 X 12's	17'-0"	11'-9"	9'-7"
	(2) 2 X 4's	2'-10"	2'-1"	1'-8"
(2) 2 X 6's	4'-2"	3'-1"	2'-6"	
(2) 2 X 8's	5'-4"	3'-11"	3'-3"	
(2) 2 X 10's	6'-5"	4'-9"	3'-11"	
(2) 2 X 12's	7'-6"	5'-6"	4'-7"	
(3) 2 X 8's	6'-8"	4'-10"	4'-0"	
(3) 2 X 10's	8'-1"	6'-0"	4'-11"	
(3) 2 X 12's	9'-5"	6'-11"	5'-9"	
(4) 2 X 8's	7'-8"	5'-8"	4'-8"	
(4) 2 X 10's	9'-4"	6'-10"	5'-8"	
(4) 2 X 12's	10'-10"	5'-8"	6'-7"	

ALL HEADERS SHALL HAVE SOLID 1/2" PLYWOOD SPACERS BETWEEN LUMBER

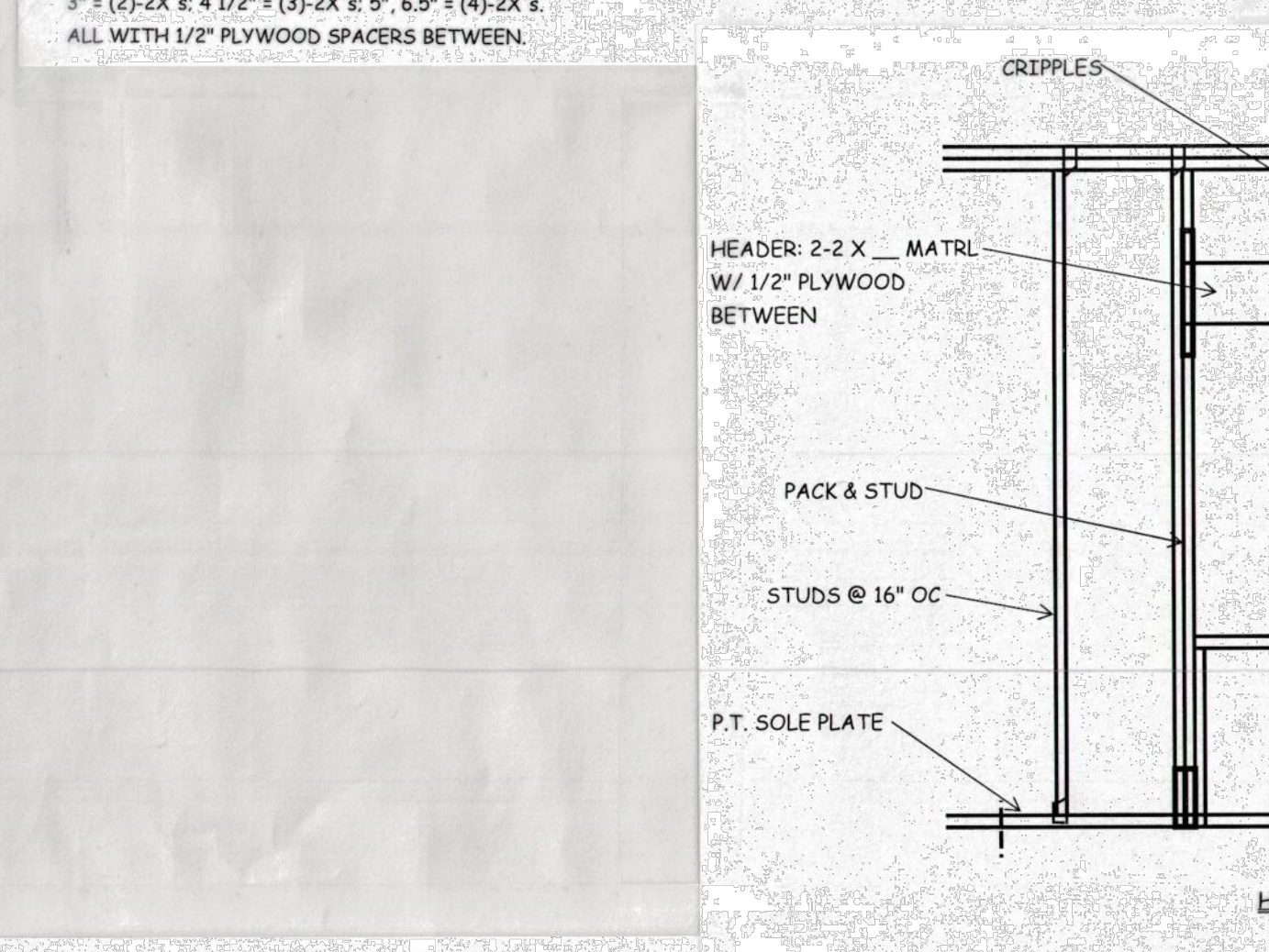
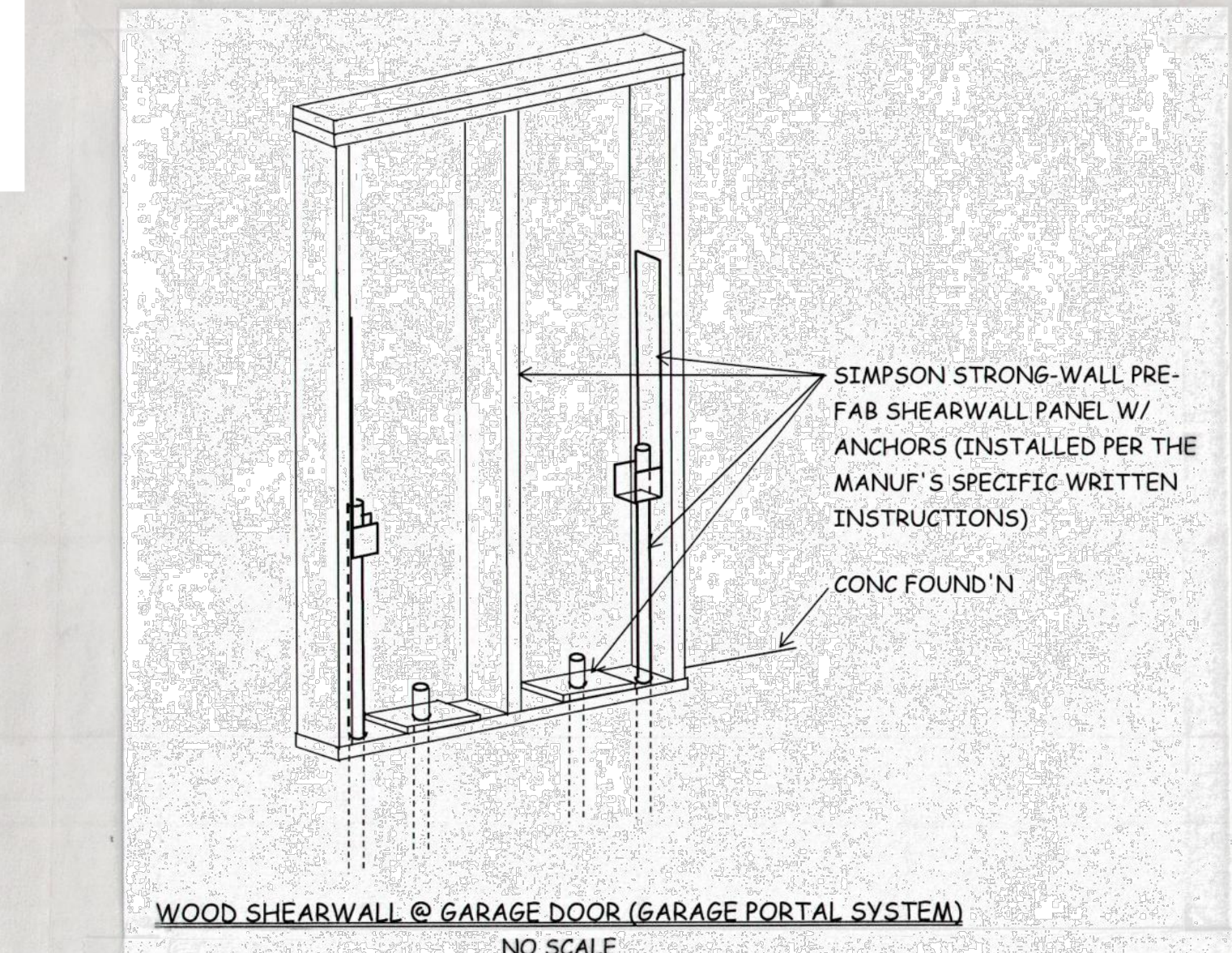
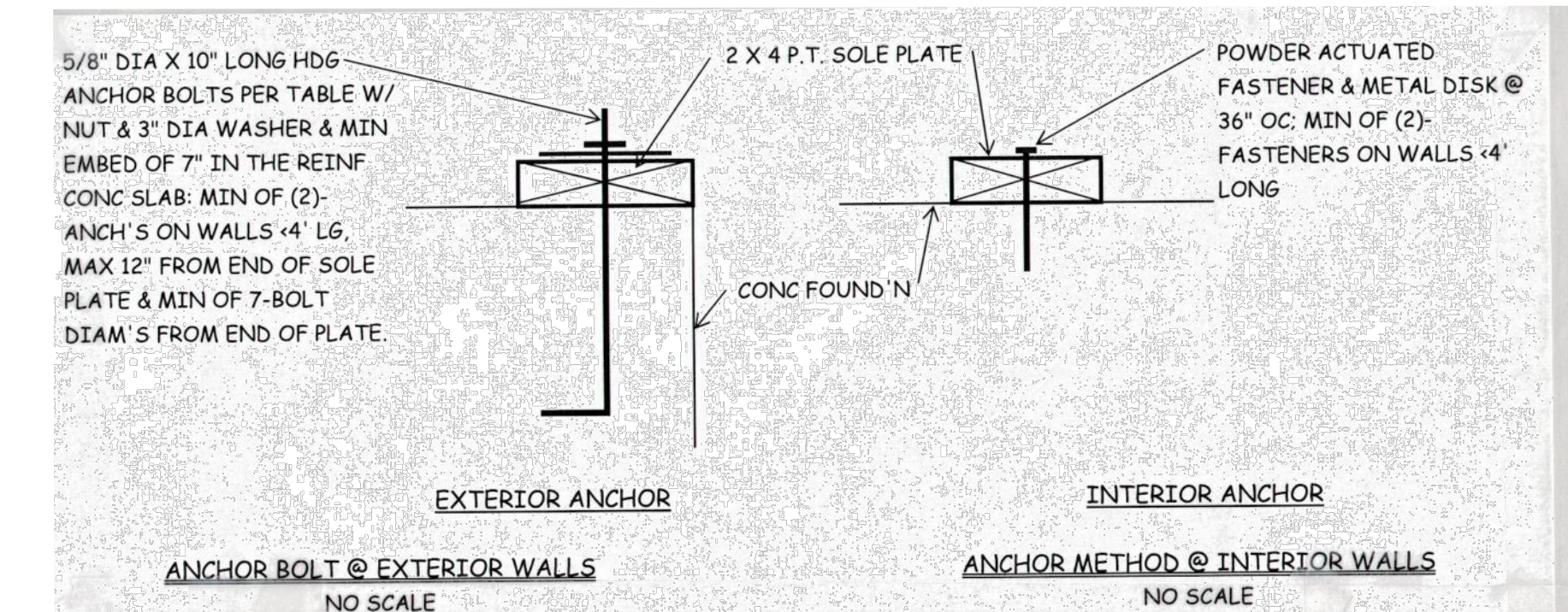
HEADER SPANS FOR EXTERIOR LOAD BEARING WALLS*

HDR SIZE	SPAN	NO. OF (FULL-HEIGHT) STUDS REQ'D @ EA SIDE
(2) 2 X 4's	4'-7"	2
(2) 2 X 6's	5'-6"	2
(2) 2 X 8's	6'-1"	3
(2) 2 X 10's	7'-1"	3
(2) 2 X 12's	7'-1"	3
(3) 2 X 8's	7'-5"	3
(3) 2 X 10's	8'-3"	3
(3) 2 X 12's	8'-8"	3
(4) 2 X 8's	8'-7"	3
(4) 2 X 10's	9'-6"	3
(4) 2 X 12's	10'-0"	4

HEADER NAILING SCHEDULE*

DESCRIPTION	NUMBER OF COMMON NAILS	NUMBER OF BOX NAILS	SPACING	REMARKS
HEADER TO HEADER (FACE NAILED)	8d	10d	6" OC @ EDGES & 12" OC @ EDGES	

*140 MPH WIND, EXPOSURE-B WITH SOLID 1/2" PLYWOOD SPACERS BETWEEN LUMBER. BLDG WIDTH IS 15' MEASURED PERP TO THE RIDGE. INTERPOLATE WIDTHS BETWEEN THOSE SHOWN.



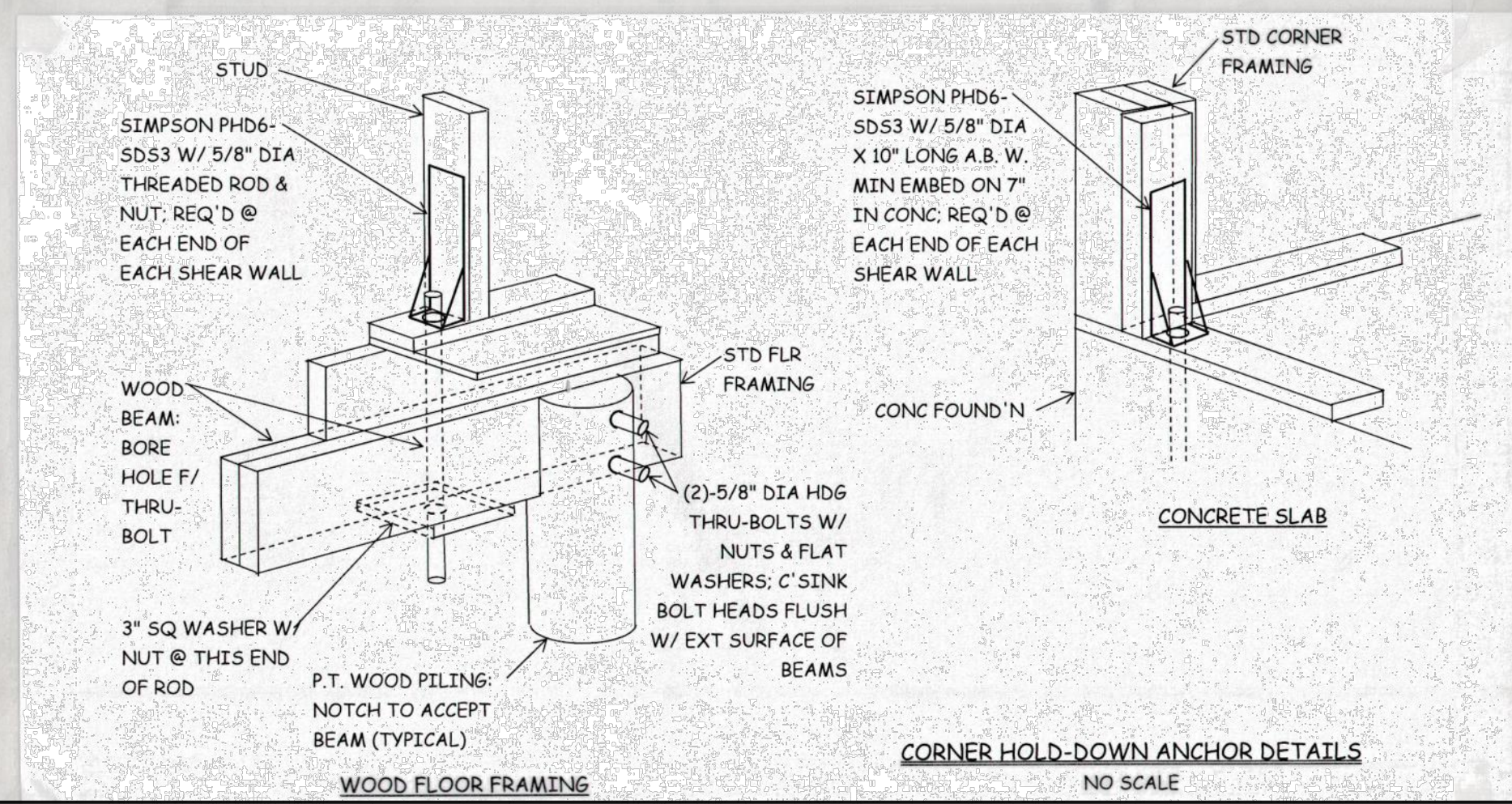
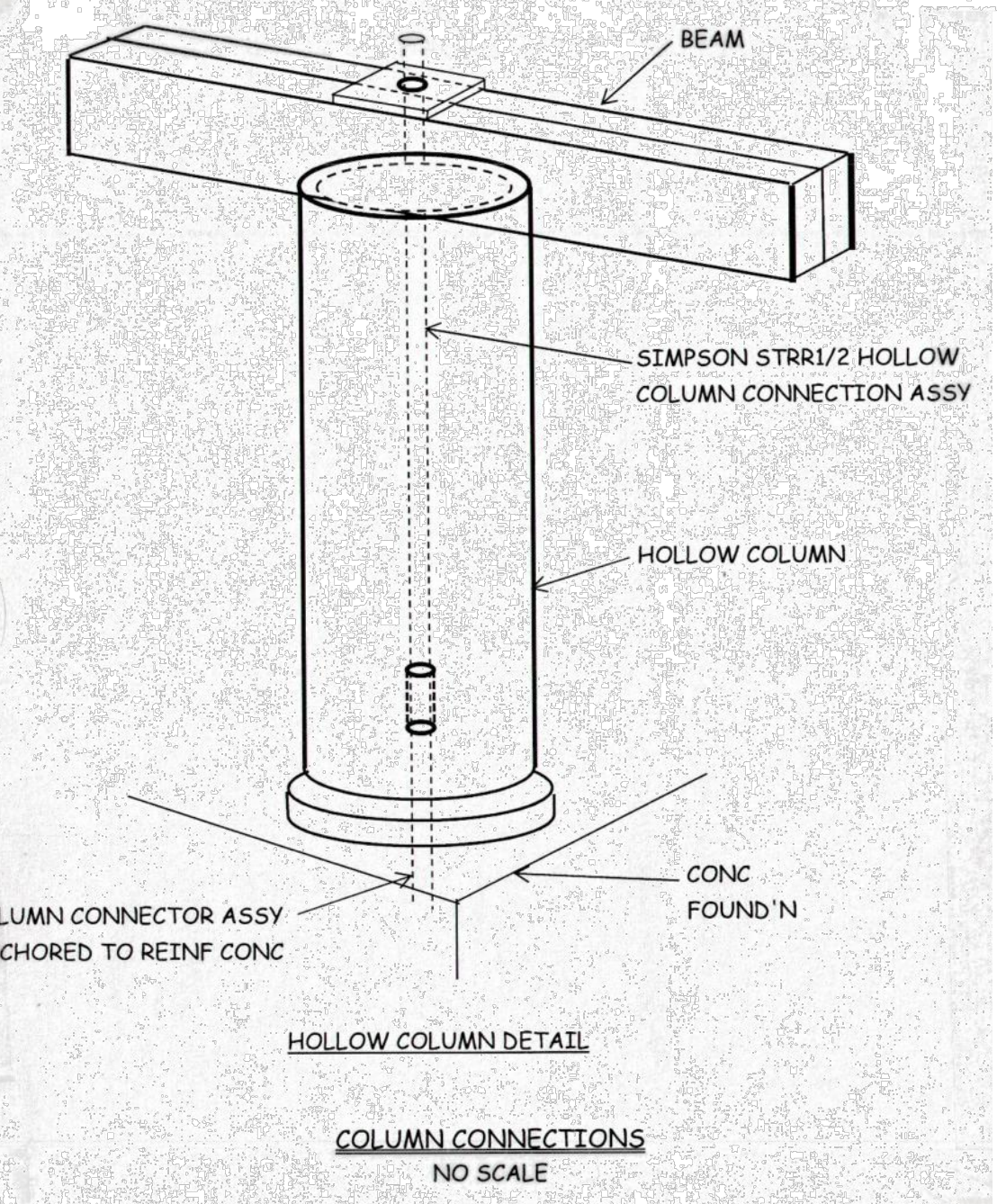
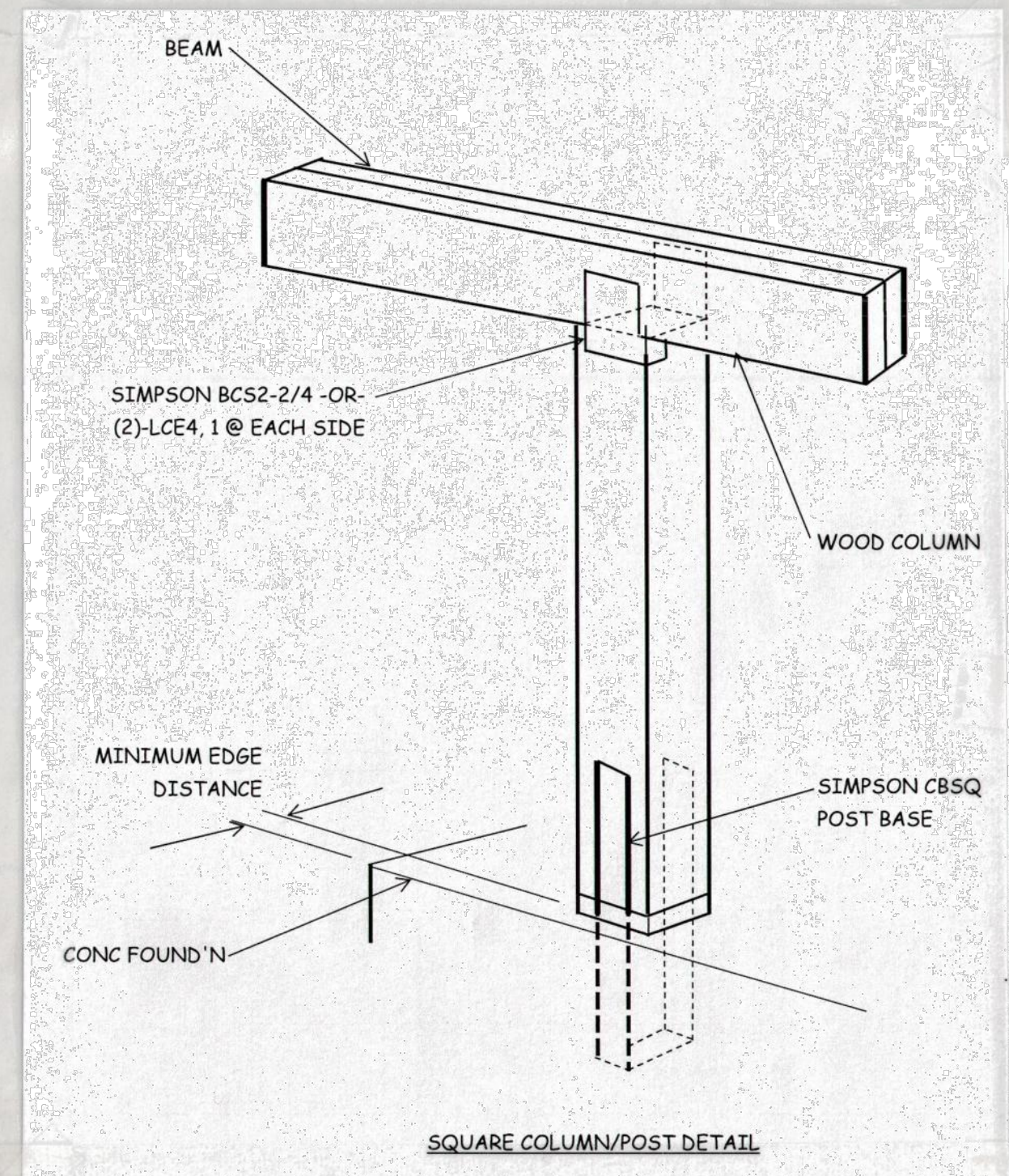
SILL OR SOLE PLATE TO FOUNDATION CONNECTIONS

RESIST UPLIFT LOADS @ 140-MPH, EXPOSURE-B

BOTTOM PLATE TO FOUND'N ANCHOR BOLT CONNECTION TO RESIST UPLIFT LOADS	FOUND'N SUPPORTS	MAXIMUM ANCHOR BOLT SPACING (INCHES ON CENTER)
UPLIFT	1-3 FLOORS	8-FOOT END ZONES 28-INCHES
		INTERIOR ZONES 33-INCHES

RESIST SHEAR LOADS @ 140-MPH, EXPOSURE-B

BOTTOM PLATE TO FOUND'N ANCHOR BOLT CONNECTION TO RESIST SHEAR LOADS	FOUND'N SUPPORTS	MAXIMUM ANCHOR BOLT SPACING (INCHES ON CENTER)
SHEAR	1-3 FLOORS	1/2" DIA ANCHOR BOLTS 30-INCHES
		5/8" DIA ANCHOR BOLTS 45-INCHES



A RESIDENCE FOR:
MR. AND MRS. KENNETH JAMES
 28811 BERRY TODD ROAD, LACOMBE, LA

SCALE: SHOWN APPROVED BY: DRAWN BY:
 DATE: 7/26/2020 ANTHONY E. PONGETI

SHEET 1/3

STANDARD DETAIL SHEET
 CONNECTION DETAILS DRAWING NUMBER: