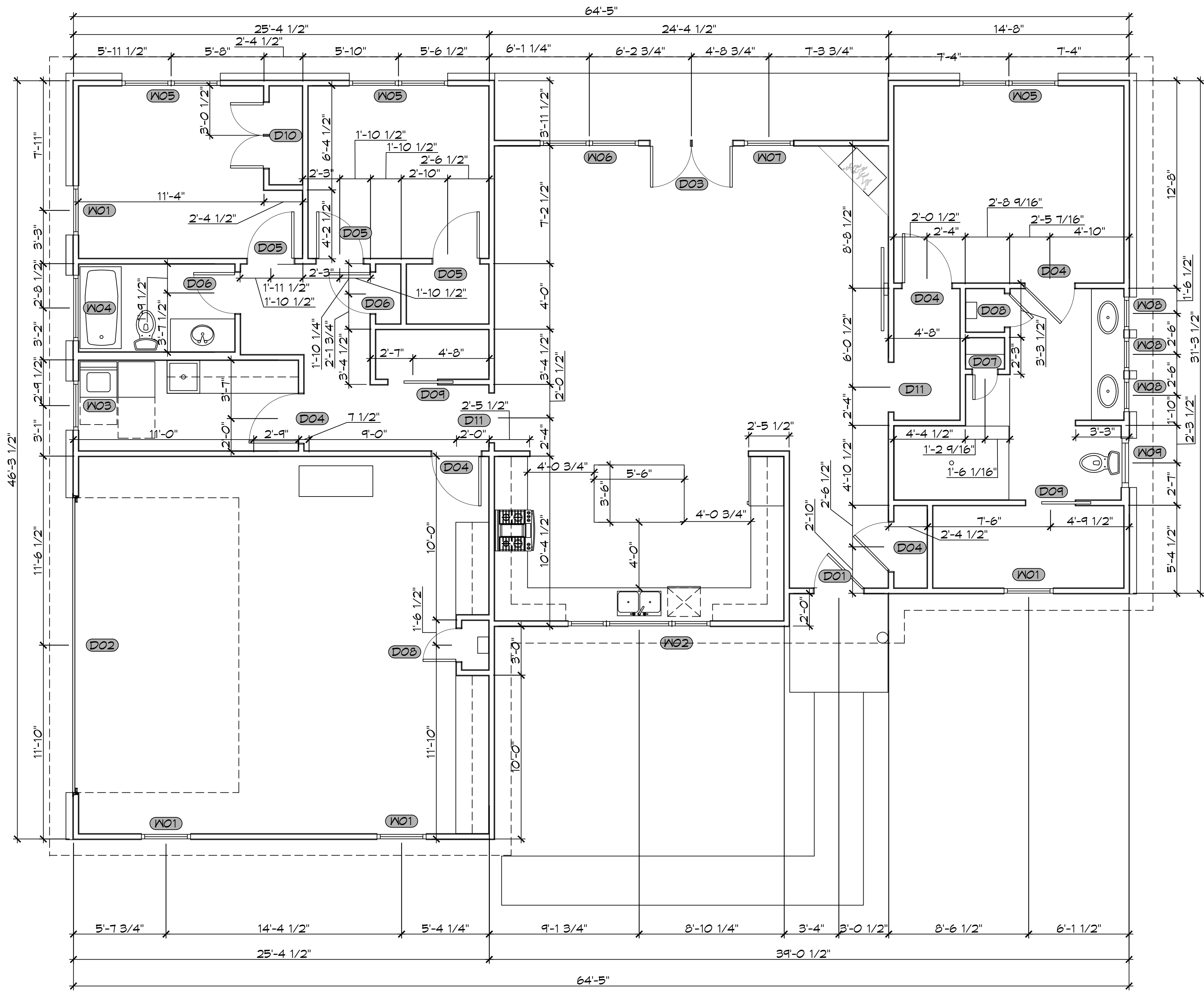


FILE NAME: A:_PROJECTS\2025\250325\250325.dwg - Door Schedule - R12.dwg, 7/2025, 10:23:52 AM



1 REMODIFIED FLOOR PLAN

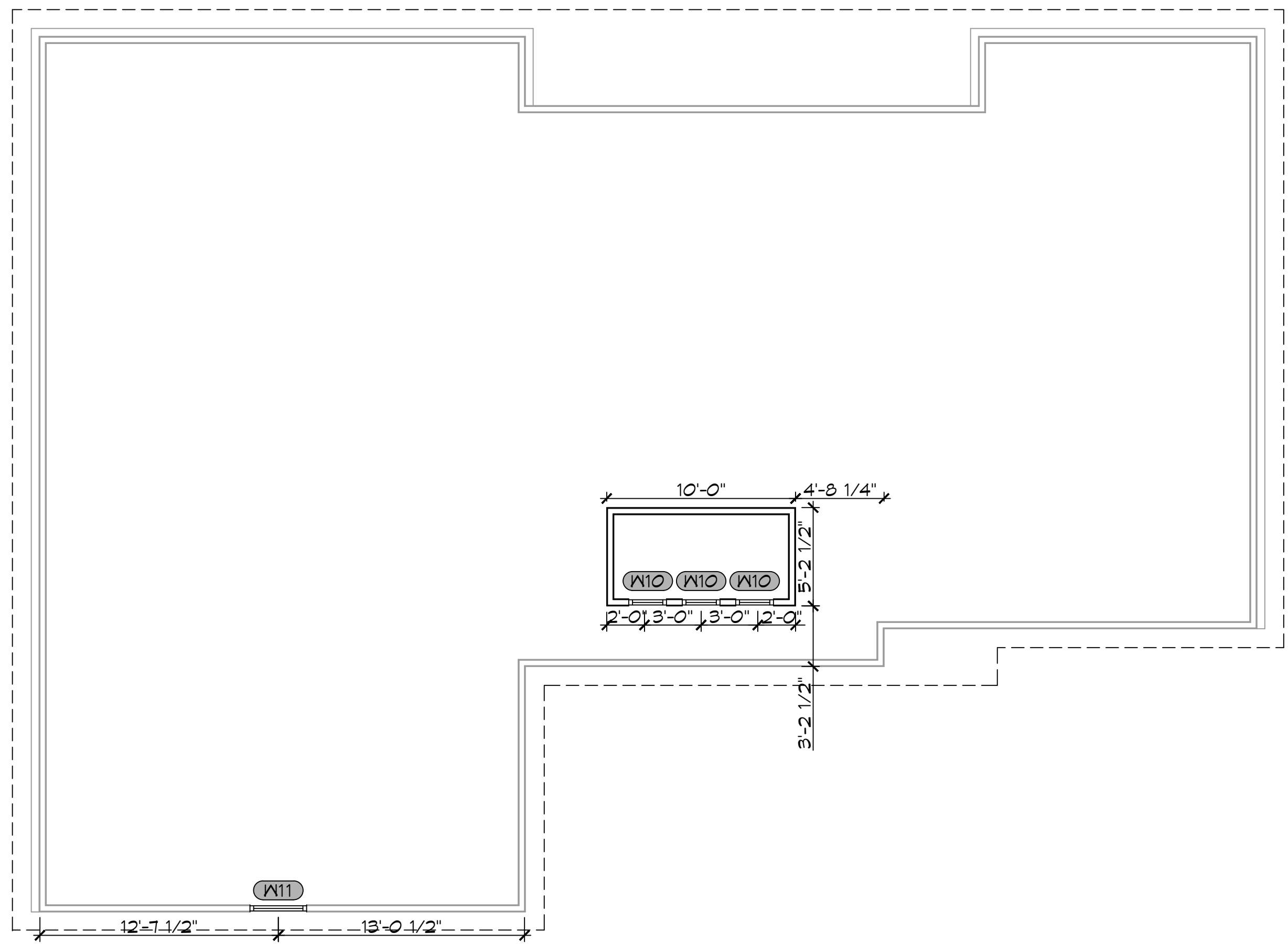
SCALE: 3/16" = 1'-0"

WINDOW SCHEDULE				DOOR SCHEDULE							
MK	WIDTH	HEIGHT	FRAME MAT	NOTES	MK	WIDTH	HEIGHT	THK	DOOR MAT	FRAME MAT	NOTES
W01	3'-0"	6'-0"	ALUM	WINDOW INSULATED	D01	4'-0"	7'-0"	1-3/4"	WOOD	WOOD	EXTERIOR DOOR WITH SIDE ONE GLASS SIDE LITE AND TRANSOM
W02	8'-0"	4'-0"	ALUM	4X4 FIXED WINDOW WITH 2X4 FIXED TRANSOMS ON BOTH SIDES	D02	18'-0"	8'-0"	1-3/4"	MTL	WOOD	2 CAR GARAGE DOOR
W03	3'-0"	4'-0"	ALUM	FIXED WINDOW INSULATED	D03	(2)2'-6"	7'-0"	1-3/4"	WOOD	WOOD	EXTERIOR DOUBLE FRENCH DOORS WITH TRANSOM
W04	4'-0"	2'-0"	ALUM	FIXED WINDOW INSULATED	D04	3'-0"	6'-8"	1-3/4"	WOOD	WOOD	INTERIOR DOOR
W05	(2)3'-0"	6'-0"	ALUM	WINDOW INSULATED	D05	2'-10"	6'-8"	1-3/4"	WOOD	WOOD	INTERIOR DOOR
W06	(2)3'-0"	5'-0"	ALUM	WINDOW INSULATED WITH (2)3X1 TRANSOM	D06	2'-6"	6'-8"	1-3/4"	WOOD	WOOD	INTERIOR DOOR
W07	3'-0"	5'-0"	ALUM	WINDOW INSULATED WITH 3X1 TRANSOM	D07	1'-6"	6'-8"	1-3/4"	WOOD	WOOD	INTERIOR DOOR
W08	2'-0"	1'-0"	ALUM	INSULATED TRANSOM WINDOW	D08	2'-0"	6'-8"	1-3/4"	WOOD	WOOD	INTERIOR DOOR
W09	3'-0"	4'-0"	ALUM	INSULATED FROSTED FIXED WINDOW	D09	3'-0"	6'-8"	1-3/4"	WOOD	WOOD	INTERIOR POCKET DOOR
W10	2'-0"	2'-0"	ALUM	INSULATED FIXED WINDOW	D10	(2)2'-0"	6'-8"	1-3/4"	WOOD	WOOD	INTERIOR FRENCH DOOR
W11	3'-0"	4'-0"	ALUM	WINDOW INSULATED	D11	3'-0"	7'-0"	1-3/4"	-	-	CASED OPENING

NOTE: OWNER TO PICK ALL WINDOW STYLES

NOTE: OWNER TO PICK ALL DOOR STYLES

SQUARE FEET	
LIVING	1684
FRONT PORCH	36
REAR PORCH	85
GARAGE	575
TOTAL SQ. FT.	2380



2 DORMER PLAN

SCALE: 3/16" = 1'-0"

DAMMON
 ENGINEERING, INC.
 LOUISIANA & MISSISSIPPI
 Chief Engineer: Brian Mitchell, PE
 554 Old Spanish Trail
 Slidell, LA 70458
 www.dammonengineering.com
 info@dammonengineering.com
 PH: 985-649-5832

#	DESCRIPTION	DATE

HOUSE PLAN
BRIAN AND JANET
BRITISH
 LOT -
 SLIDELL, LA 70460
 JOB No: 09-19-2025
 DATE: 09-19-2025
 DRAWN BY: SKJ
 CHECKED BY: CKD

SHEET TITLE:
FLOOR PLAN OPTIONS

DRAWING NUMBER:

A101