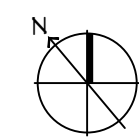
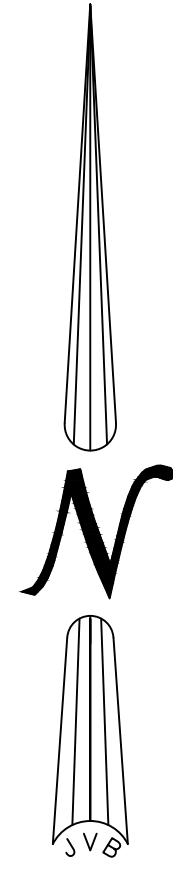
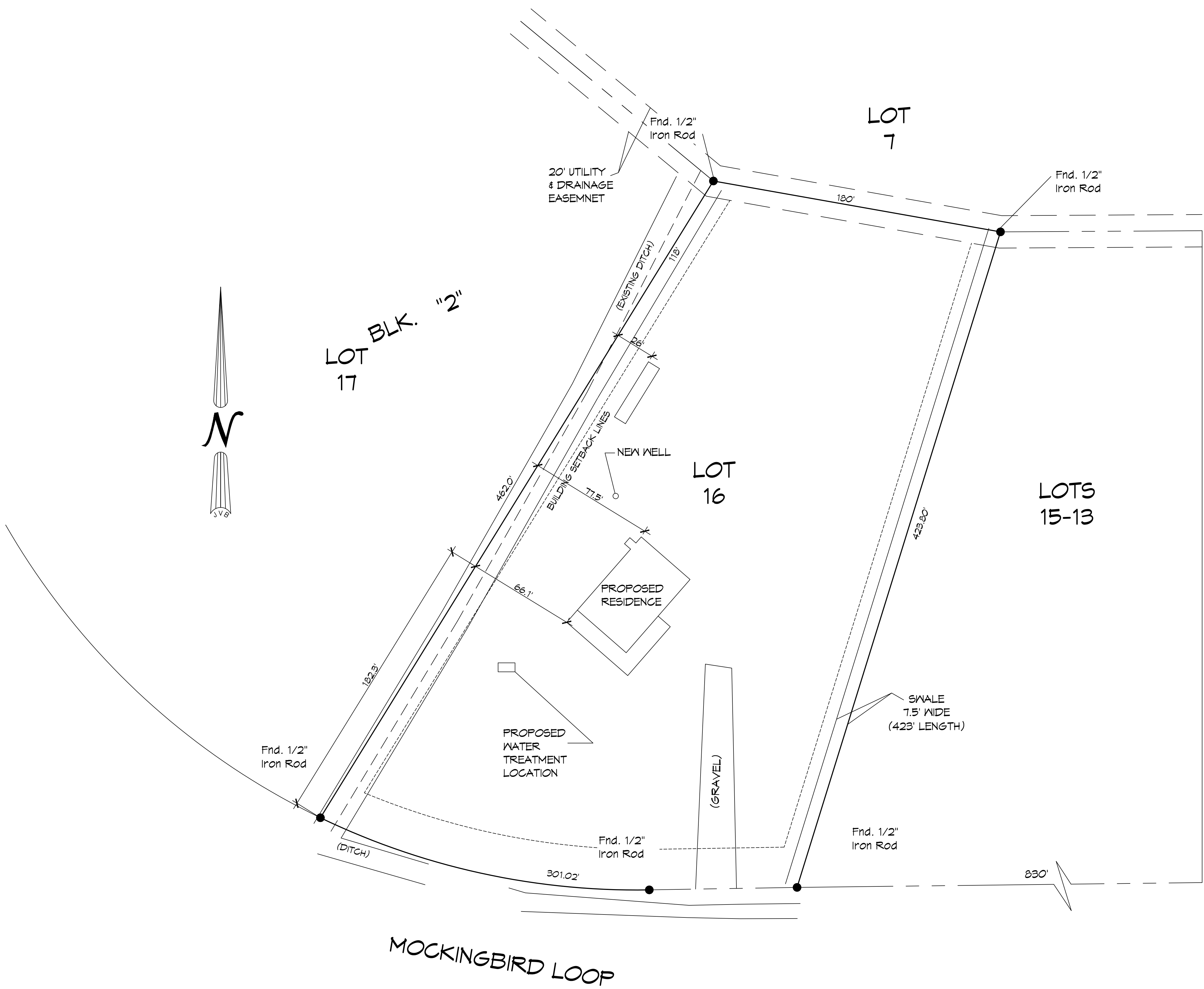


PLOT MAP - 1/16" = 100' (SEE PLAN FOR DIMENSIONS) - 1/16" = 100' (SEE PLAN FOR DIMENSIONS) - 1/16" = 100' (SEE PLAN FOR DIMENSIONS) - 1/16" = 100' (SEE PLAN FOR DIMENSIONS)



1 PROPOSED SITE PLAN

SCALE: 1/32" = 1'-0"

ZONING	
RESIDENTIAL DISTRICT	
FLOOD ZONE	
ZONE: A	
BUILDING ELEVATION	
FINISHED FLOOR ELEVATION - 46'	
SQUARE FEET	
LIVING	1320
PORCH	825
GARAGE	1080
TOTAL SQ. FT.	3225

LEGEND	
—————	PROPERTY LINE
- - - - -	SETBACK LINE

DESIGN CRITERIA
 THE CONSTRUCTION FOR SAID RESIDENCE, WHERE WIND SPEED IS 140 MILES PER HOUR, WIND EXPOSURE ZONE B, IS DESIGNED IN ACCORDANCE WITH: AMERICAN FOREST AND PAPER ASSOCIATION (AF&PA) WOOD FRAME CONSTRUCTION MANUAL FOR ONE AND TWO FAMILY DWELLINGS (WFCM) 2001 EDITION AS WELL AS THE INTERNATIONAL RESIDENTIAL CODE (IRC) 2021 EDITION

NOTES
 BUILDING SETBACKS (* VERIFY PRIOR TO CONSTRUCTION)
 FRONT SETBACK.....25'
 SIDE SETBACK.....15'
 REAR SETBACK.....*

SHEET INDEX	
SHEET #	SHEET TITLE
C101	SITE PLAN
S101	FRAMING SECTION
S102	TYPICAL CONNECTION DETAILS, SCHEDULES, AND NOTES
A101	FLOOR PLAN
A102	ELEVATION PLAN
P101	PLUMBING PLAN & PLUMBING RISER
M101	MECHANICAL PLAN
E101	ELECTRICAL LIGHTING PLAN
E102	ELECTRICAL POWER PLAN

DAMMON ENGINEERING, INC.
 LOUISIANA & MISSISSIPPI
 www.dammonengineering.com
 info@dammonengineering.com
 Chief Engineer: Brian Mistich, PE
 554 Old Spanish Trail
 Slidell, LA 70458
 PH: 985-649-5832

REVISIONS	DATE	DESCRIPTION



HOUSE PLAN
SARGELA AFENH
 35165 MOCKINGBIRD LOOP
 PEARL RIVER, LA, 70452
 JOB No: _____
 DRAWN BY: _____
 DATE: 10-29-2025
 CHECKED BY: LJP
 CKD

SHEET TITLE:
PROPOSED SITE PLAN
 DRAWING NUMBER:
C101
 SHEET No: 1 of 1