

REVISIONS	DATE	DESCRIPTION	SCALE

NOTE: OWNER TO PICK ALL WINDOW STYLES

NO	QTY	DESCRIPTION	UNIT	NOTE
1313	1	ALUM. 5'-0" W/GRIDS SINGLE HINGE CLEAR	EA	
1314	1	ALUM. 5'-0" W/GRIDS SINGLE HINGE CLEAR	EA	
1011	1	FIXED WINDOW INSULATED TRANSOM	EA	
1012	1	FIXED WINDOW INSULATED TRANSOM	EA	
1013	1	FIXED WINDOW INSULATED TRANSOM	EA	
1014	1	FIXED WINDOW INSULATED TRANSOM	EA	
1015	1	FIXED WINDOW INSULATED TRANSOM	EA	
1016	1	FIXED WINDOW INSULATED TRANSOM	EA	
1017	1	FIXED WINDOW INSULATED TRANSOM	EA	
1018	1	FIXED WINDOW INSULATED TRANSOM	EA	
1019	1	FIXED WINDOW INSULATED TRANSOM	EA	
1020	1	FIXED WINDOW INSULATED TRANSOM	EA	
1021	1	FIXED WINDOW INSULATED TRANSOM	EA	
1022	1	FIXED WINDOW INSULATED TRANSOM	EA	
1023	1	FIXED WINDOW INSULATED TRANSOM	EA	
1024	1	FIXED WINDOW INSULATED TRANSOM	EA	
1025	1	FIXED WINDOW INSULATED TRANSOM	EA	
1026	1	FIXED WINDOW INSULATED TRANSOM	EA	
1027	1	FIXED WINDOW INSULATED TRANSOM	EA	
1028	1	FIXED WINDOW INSULATED TRANSOM	EA	
1029	1	FIXED WINDOW INSULATED TRANSOM	EA	
1030	1	FIXED WINDOW INSULATED TRANSOM	EA	
1031	1	FIXED WINDOW INSULATED TRANSOM	EA	
1032	1	FIXED WINDOW INSULATED TRANSOM	EA	
1033	1	FIXED WINDOW INSULATED TRANSOM	EA	
1034	1	FIXED WINDOW INSULATED TRANSOM	EA	
1035	1	FIXED WINDOW INSULATED TRANSOM	EA	
1036	1	FIXED WINDOW INSULATED TRANSOM	EA	
1037	1	FIXED WINDOW INSULATED TRANSOM	EA	
1038	1	FIXED WINDOW INSULATED TRANSOM	EA	
1039	1	FIXED WINDOW INSULATED TRANSOM	EA	
1040	1	FIXED WINDOW INSULATED TRANSOM	EA	
1041	1	FIXED WINDOW INSULATED TRANSOM	EA	
1042	1	FIXED WINDOW INSULATED TRANSOM	EA	
1043	1	FIXED WINDOW INSULATED TRANSOM	EA	
1044	1	FIXED WINDOW INSULATED TRANSOM	EA	
1045	1	FIXED WINDOW INSULATED TRANSOM	EA	
1046	1	FIXED WINDOW INSULATED TRANSOM	EA	
1047	1	FIXED WINDOW INSULATED TRANSOM	EA	
1048	1	FIXED WINDOW INSULATED TRANSOM	EA	
1049	1	FIXED WINDOW INSULATED TRANSOM	EA	
1050	1	FIXED WINDOW INSULATED TRANSOM	EA	

NOTE: OWNER TO PICK ALL WINDOW STYLES

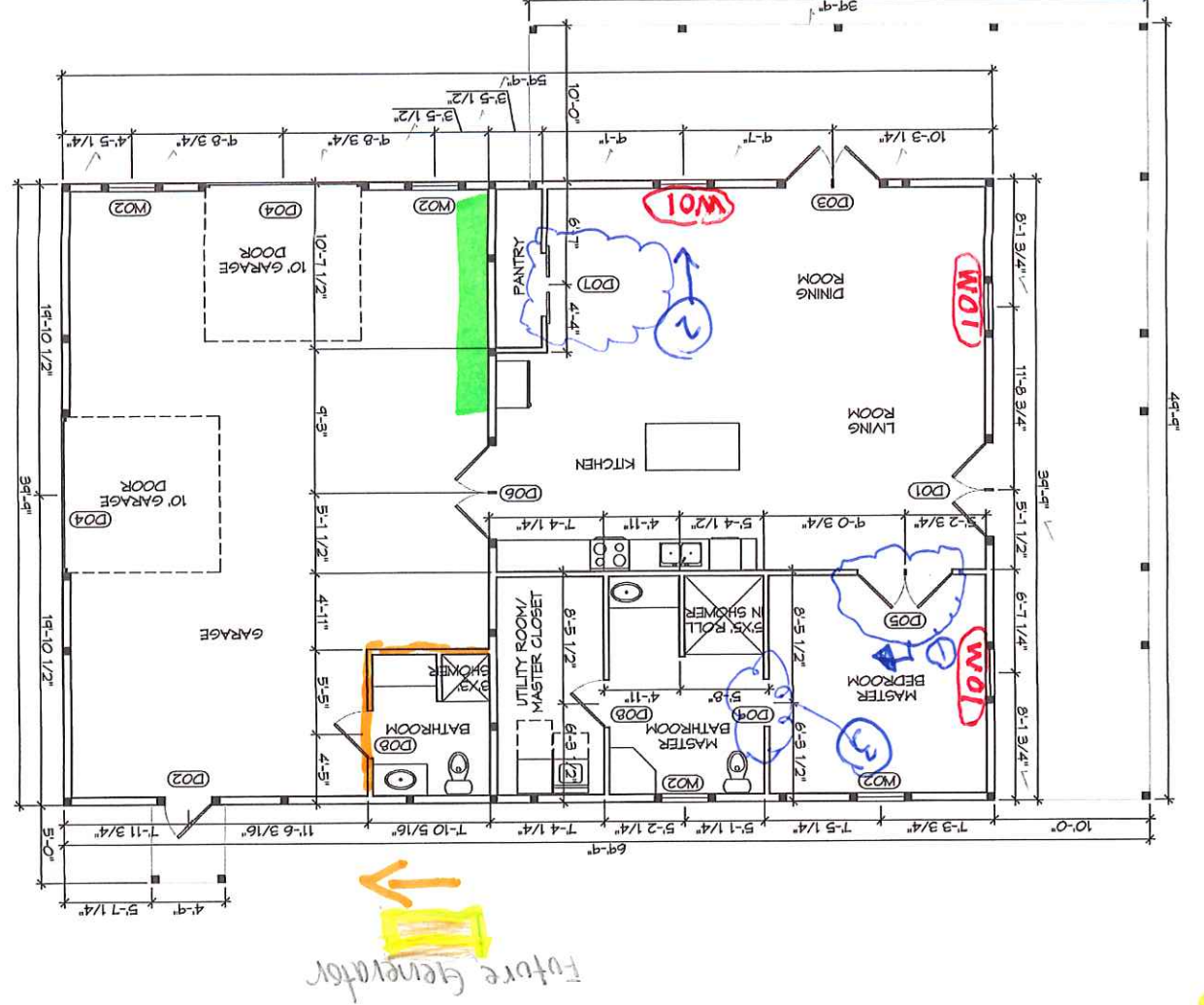
ALL WALLS REQUIRING PUMPING- MAKE 2X6  
 Rough in for future gas and water  
 Move Bathroom over to make room for  
 MECHANICAL ROOM  
 - Relocate door per sketch  
 - Add floor drain for future shower  
 Relocate dryer, washer and  
 ADD UTILITY SINK  
 PUT THE ELECTRICAL PANEL IN  
 MECHANICAL ROOM, SEE SKETCH  
 FOR LOCATION OF MECHANICAL  
 ROOM  
 - PLACE AIR HANDLING UNIT  
 IN MECHANICAL ROOM  
 - PLACE HOT WATER HEATER  
 IN MECHANICAL ROOM

I put these here just for  
 my reference when we were  
 discussing drawings. Please  
 do not add to the drawing.

SQUARE FEET

1313	LIVING	1313
1011	PORCH	1011
1016	GARAGE	1016
TOTAL SQ. FT. 3186		

NOTE: FIELD VERIFY ALL DIMENSIONS, PAINT, FLOORING, LIGHTS, DOORS, ACCESSORIES, COLORS & STYLES WITH OWNER  
 NOTE: OWNER TO PICK ALL WINDOW STYLES



- 1) Move E of door, center opening with Master Bedroom
- 2) Move E of door, center opening on pantry
- 3) Make this a 4'-0" opening
- 4) Change cabinet (2) 18'-0"
- 5) This is a metal door

SEPTIC TANK







