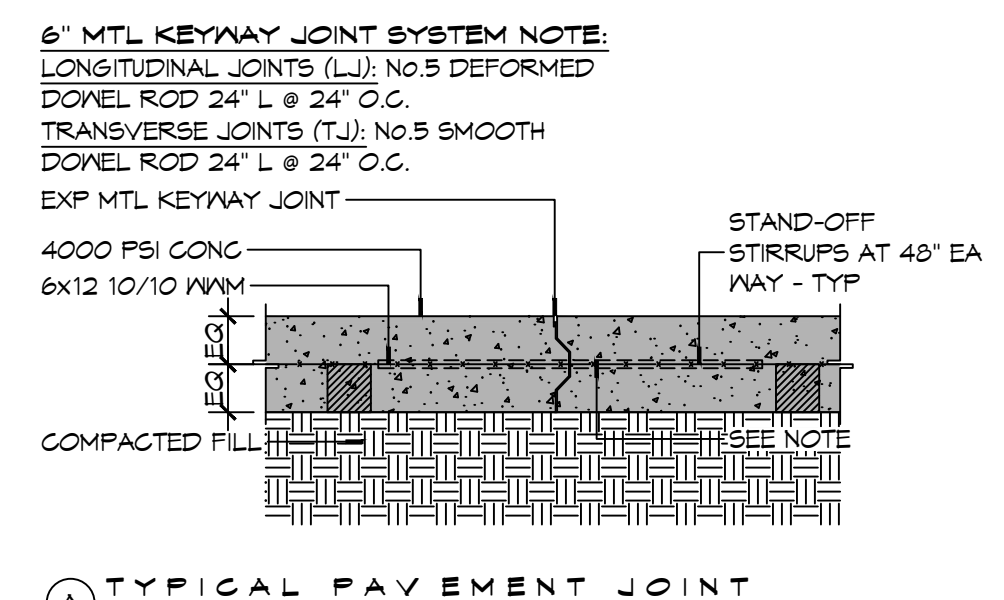
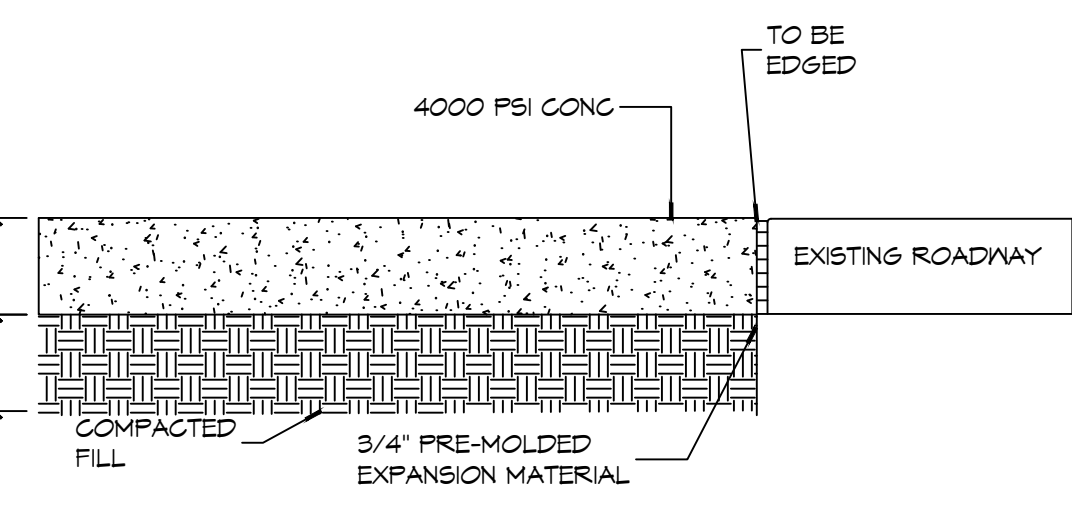
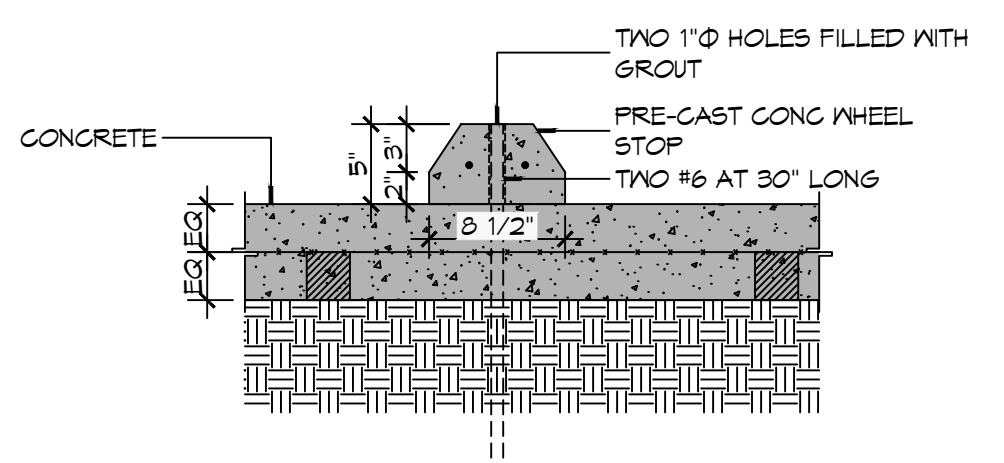
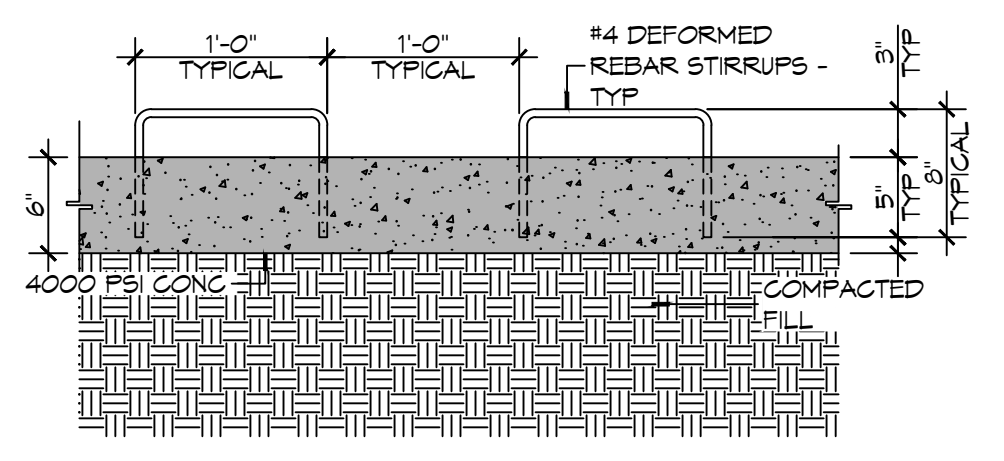
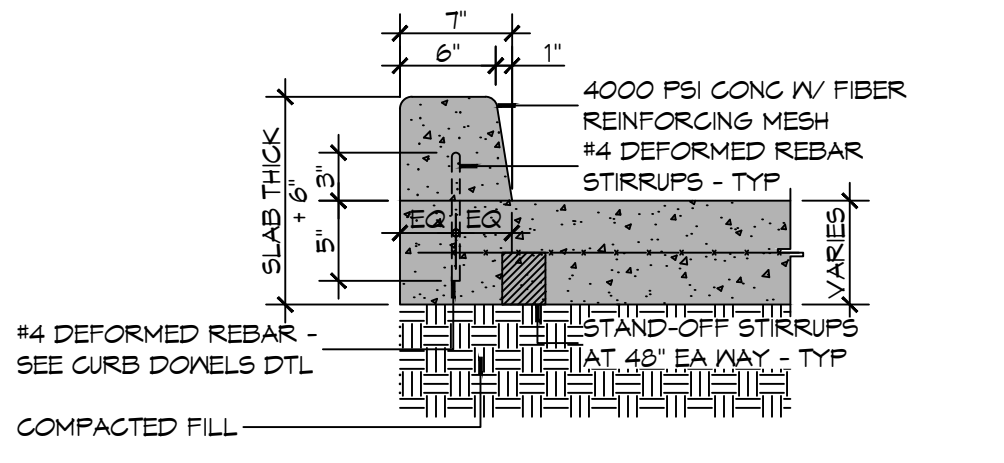


6 SITE PAVING PLAN
SCALE: 1" = 20'-0"



(A) TYPICAL PAVEMENT JOINT



NOTE:
ALL DRIVEWAYS IN R/W SHALL BE MINIMUM 6" THICK CONCRETE OVER 6" COMPACTED SAND BASE. CONCRETE SHALL BE 4000 PSI, REINFORCED WITH POLYPROPYLENE FIBERS (1-1/2 ONE-POUND BAGS PER C.Y. OF CONCRETE)

PAVING DETAILS
SCALE: 1" = 1'-0"

GENERAL PAVING NOTES

- ALL NEW CONCRETE SHALL HAVE A MINIMUM COMPRESSIVE STRENGTH OF 4,000 PSI AT 28 DAYS AND A MINIMUM THICKNESS OF 6". CONCRETE MIX SHALL BE IN ACCORDANCE WITH THE LATEST REVISION OF ASTM C-150 TYPE 1.
- CONCRETE PAVING THICKNESS SHALL VARY AS FOLLOWS:
 - APRONS & LOADING AREAS = 8" THICKNESS (INDICATED WITH CROSS HATCH WHERE OCCURS)
 - DRIVE LANES & PARKING AREAS = 6" THICKNESS (STANDARD UNO)
- ALL REINFORCING STEEL SHALL MEET ASTM-A615 (GRADE 60).
- ALL REINFORCING STEEL SHALL BE SECURELY SUPPORTED TO PREVENT BOTH VERTICAL AND HORIZONTAL MOVEMENT DURING CONCRETE PLACEMENT. ALL CONTROL AND EXPANSION JOINTS SHALL BE LOCATED AND INSTALLED AS SHOWN ON THE PAVING PLAN AND IN ACCORDANCE WITH THE MANUFACTURER'S RECOMMENDATIONS.
- ALL SUB GRADE FILL SHALL BE SELECT GRANULAR MATERIAL COMPACTED TO 95% STANDARD PROCTOR DENSITY IN A MAXIMUM OF 6" LIFTS.
- ANY WORK WITHIN THE ROADWAY OR ADJACENT TO THE ROADWAY CAUSING AN INTERFERENCE TO VEHICULAR TRAFFIC MUST CONFORM TO THE REQUIREMENTS SET FORTH BY THE UNIFORM MANUAL OF TRAFFIC CONTROL DEVICES OF THE STATE OF LOUISIANA. THE CONTRACTOR MUST FURNISH ALL NECESSARY TRAFFIC SIGNS AND/OR BARRICADES AND MAINTAIN THEM DURING CONSTRUCTION ACTIVITY.

PAVING LEGEND

- TOC XXXX' — TOP OF CONCRETE OR CURB ELEVATION
- TOG XXXX' — TOP OF GRATE ELEVATION
- INV XXXX' — INVERT OF PIPE ELEVATION
- LJ — LONGITUDINAL JOINTS (LJ) = NO. 5 DEFORMED DOBEL RODS 24" LONG @ 24" O.C.
- TJ — TRANSVERSE JOINTS (TJ) = NO. 5 SMOOTH DOBEL RODS 24" LONG @ 24" O.C.
- PARKING WHEEL STOP
- NEW CATCH BASIN
- XXXX.00 EXISTING TOPO
- XXXX.00 NEW TOPO

DAMMON ENGINEERING, INC.
LOUISIANA & MISSISSIPPI
Chief Engineer: Brian Mistich, PE
554 Old Spanish Trail
Slidell, LA 70468
www.dammonengineering.com
info@dammonengineering.com
PH: 985.649.5832 F: 985.641.9950

#	DESCRIPTION	DATE



**NEW AUDITORIUM
POPE JOHN PAUL
HIGH SCHOOL**

1901 LAGUARDIA DR
SLIDELL, LA 70461
JOB No: 2522 DATE: 09-27-2026
DRAWN BY: BAW
CHECKED BY: BAW

SHEET TITLE:
SITE PAVING PLAN

DRAWING NUMBER:
C104

SHEET No: 6 of 20