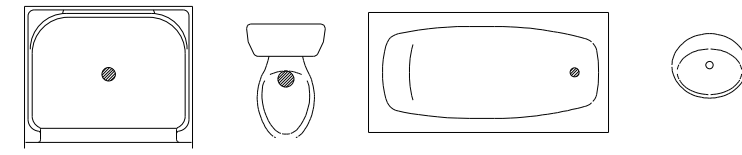


Builder must check correctness of this drawing PRIOR to erection of this system. This drawing is conceptual and should be used with the Architectural plans to insure proper joist and beam placement. Stairways may be drawn small to allow for adjustments in the field.

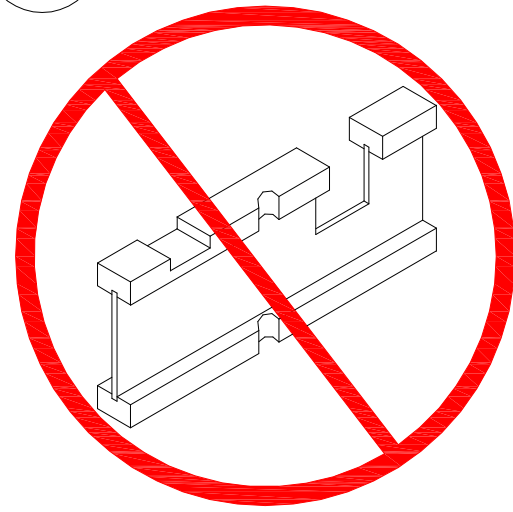
BEARING WALLS AND POINT LOADS FROM FLOORS ABOVE DIRECTLY EFFECT SLAB OR FLOORS BELOW AND SHOULD BE ADDRESSED PRIOR TO INSTALLATION OF SLAB OR FLOORS BELOW IF NOT DIRECTLY ADDRESSED IN THESE LAYOUTS

Symbols for reference only. Framer to verify fixture locations for proper joist adjustments.

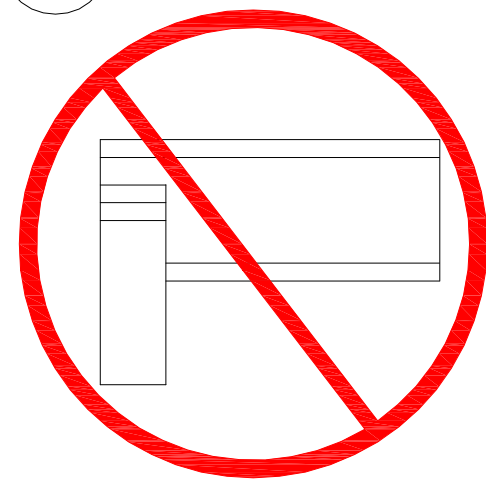


Connector Summary			
PlotID	Qty	Manuf	Product
Hu1	1	Simpson	HU414
Hu2	29	Simpson	ITS1.81/16
Hu3	6	Simpson	ITS1.81/16
Hu4	1	Simpson	ITS3.56/16
Hu5	1	Simpson	IUS 3.56/14

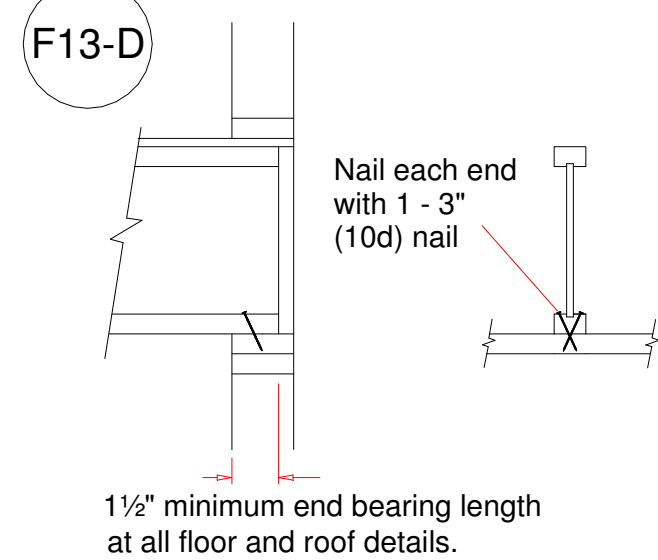
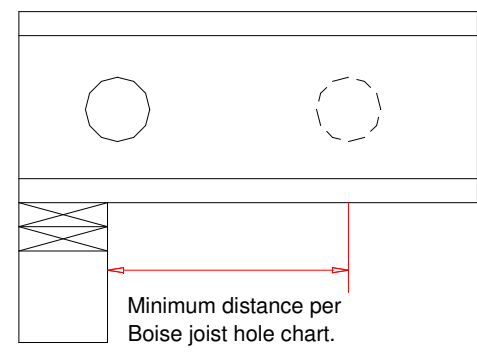
DN01 DO NOT cut, notch or drill flanges



DN03 DO NOT support joist by top flange and/or web.



DN04 DO NOT cut holes near bearing support



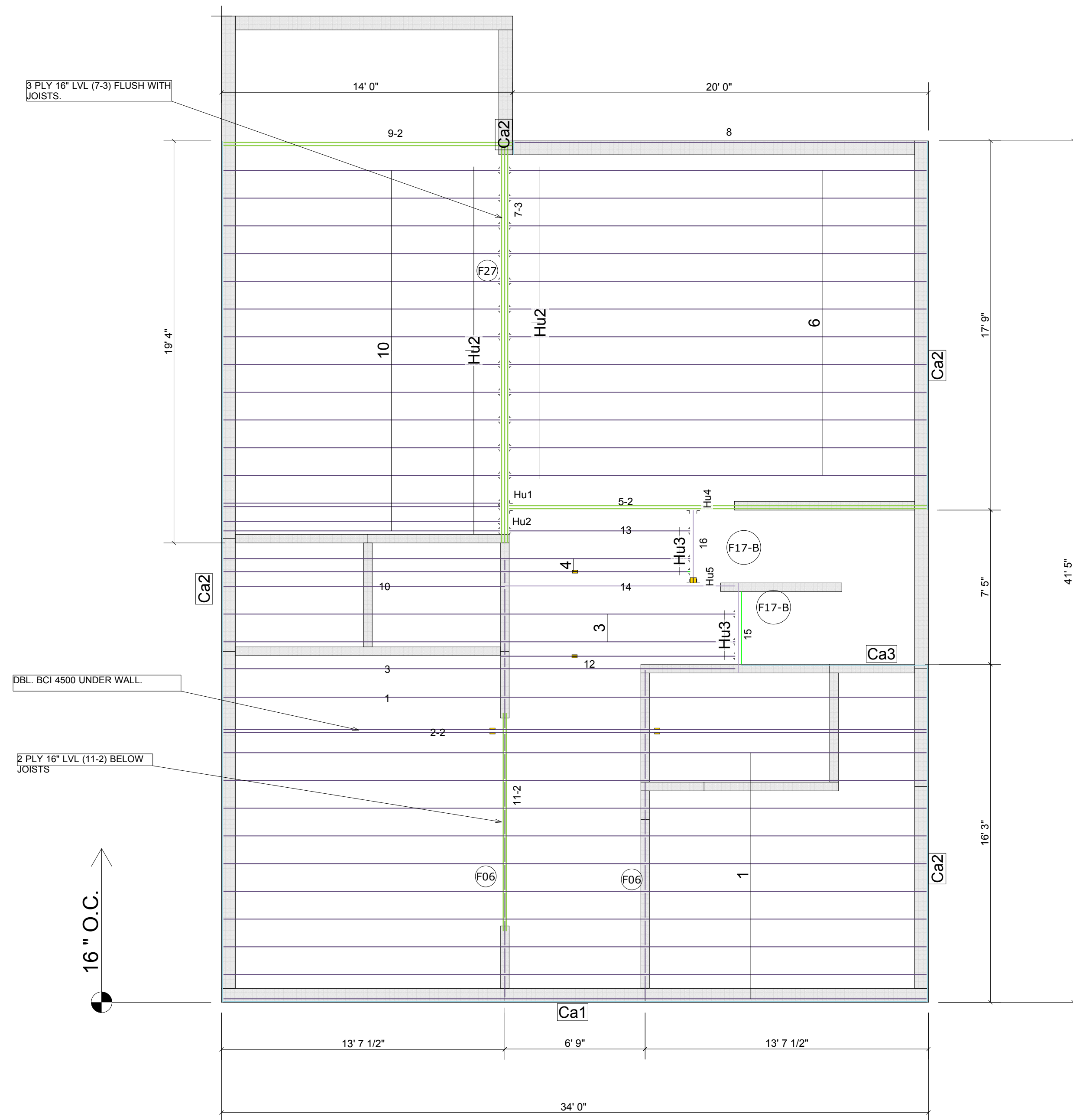
**B12-A** Side Loaded Connection Double & Triple 1-3/4" Versa-Lam® Nail Pattern

Number of Members	Max. Uniform Load (lbs. per ln. ft.)	
	2 rows	3 rows
2	470	705
3 (a)	350	525

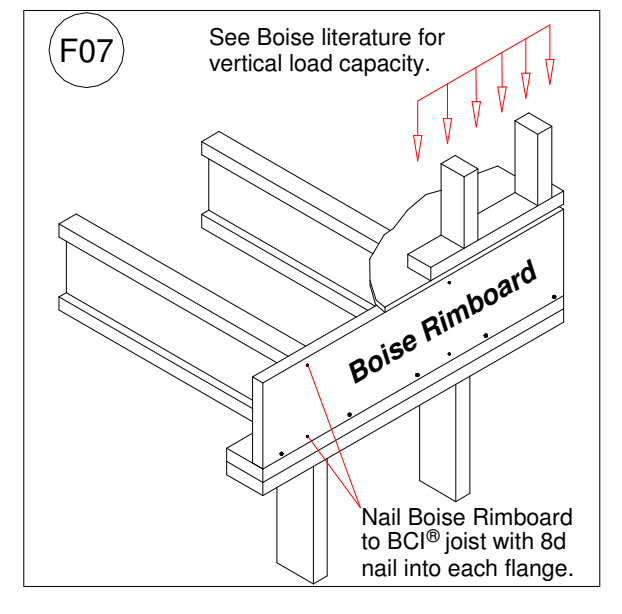
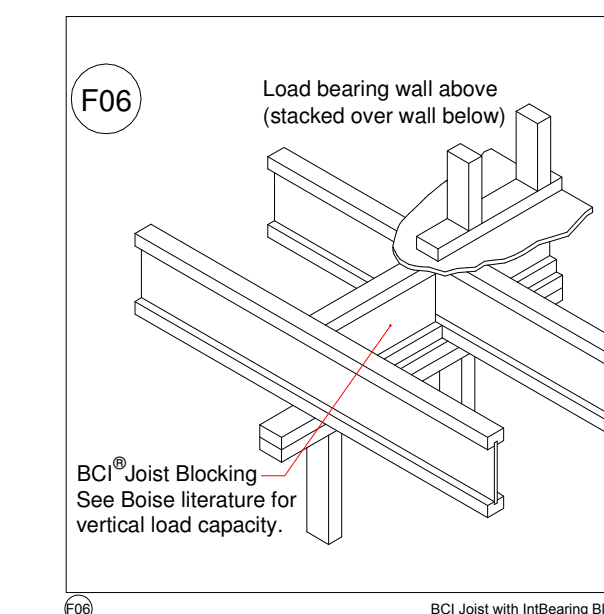
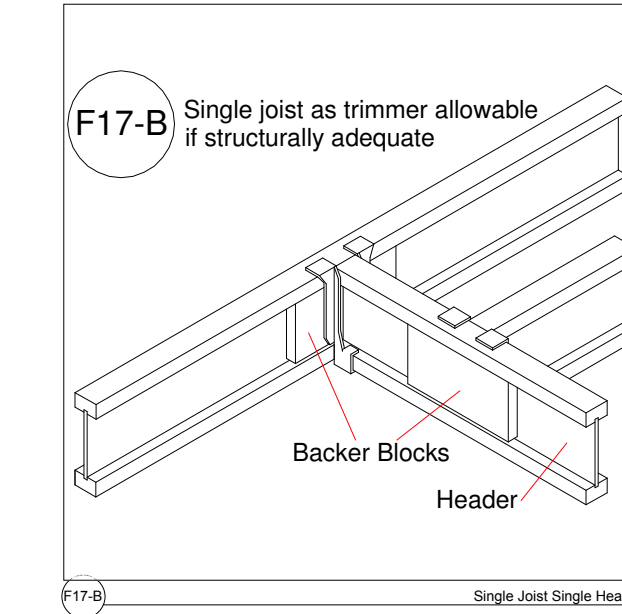
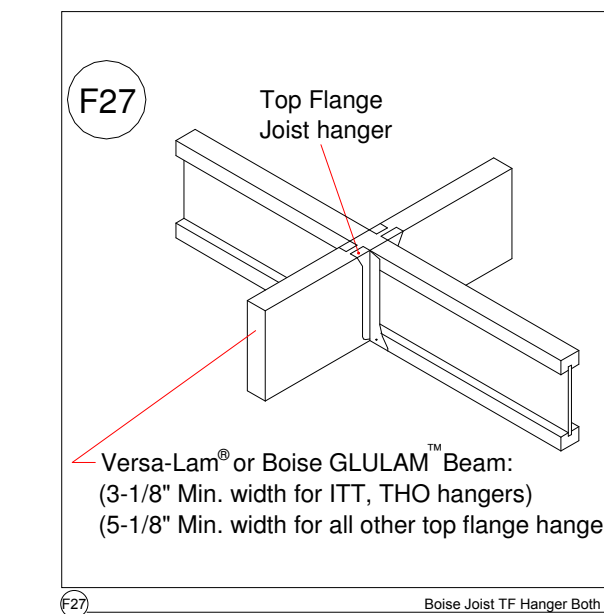
12" o.c. 16d sinker nails See chart  
2" min. Stagger nails from both sides to avoid splitting.

(a) Nail pattern for 3-piece member must occur on both sides. Nail values may be increased by 15% for snow load roofs and by 25% for non-snow load roofs where building code allows.

FLOOR LIVE LOAD - 40# PSF  
FLOOR DEAD LOAD - 10# PSF  
ROOF LIVE LOAD - 20# PSF  
ROOF DEAD LOAD - 20# PSF



Products				
PlotID	Net Qty	Product	Length	Plies
Ca1	1	1-1/8" x 16" BC RIM BOARD™ OSB	34' 0"	1
Ca3	1	1-1/8" x 16" BC RIM BOARD™ OSB	10' 0"	1
Ca2	7	1-1/8" x 16" BC RIM BOARD™ OSB	12' 0"	1
1	11	16" BCI@ 4500s-1.8 SP	34' 0"	1
2-2	2	16" BCI@ 4500s-1.8 SP	34' 0"	2
3	3	16" BCI@ 4500s-1.8 SP	26' 0"	1
4	2	16" BCI@ 4500s-1.8 SP	24' 0"	1
5-2	2	1-3/4" x 16" VERSA-LAM@ 2.0 3100 SP	22' 0"	2
6	12	16" BCI@ 4500s-1.8 SP	22' 0"	1
7-3	3	1-3/4" x 16" VERSA-LAM@ 2.0 3100 SP	20' 0"	3
8	1	16" BCI@ 4500s-1.8 SP	20' 0"	1
9-2	2	1-3/4" x 16" VERSA-LAM@ 2.0 3100 SP	14' 0"	2
10	17	16" BCI@ 4500s-1.8 SP	14' 0"	1
11-2	2	1-3/4" x 16" VERSA-LAM@ 2.0 3100 SP	12' 0"	2
12	1	16" BCI@ 4500s-1.8 SP	12' 0"	1
13	1	16" BCI@ 4500s-1.8 SP	10' 0"	1
Bk1	17	16" BCI@ 4500s-1.8 SP	2' 0"	1
14	1	16" BCI@ 90s-2.0 SP	12' 0"	1
15	1	16" BCI@ 90s-2.0 SP	6' 0"	1
16	1	16" BCI@ 90s-2.0 SP	4' 0"	1



NOTE: ALL MEASUREMENTS TO BE VERIFIED IN THE FIELD.

# Floor 2

Dash Lumber - Anne  
Craven Residence - 1519 Pier Ave.  
Metairie, La.

BC FRAMER

Scale: N.T.S.

Date: [??]

By: Ronnie Talley

File: 18625

DWG:

Sheet: 1/1

DAMMON ENGINEERING, INC.  
554 OLD SPANISH TRAIL  
SLIDELL, LA 70458