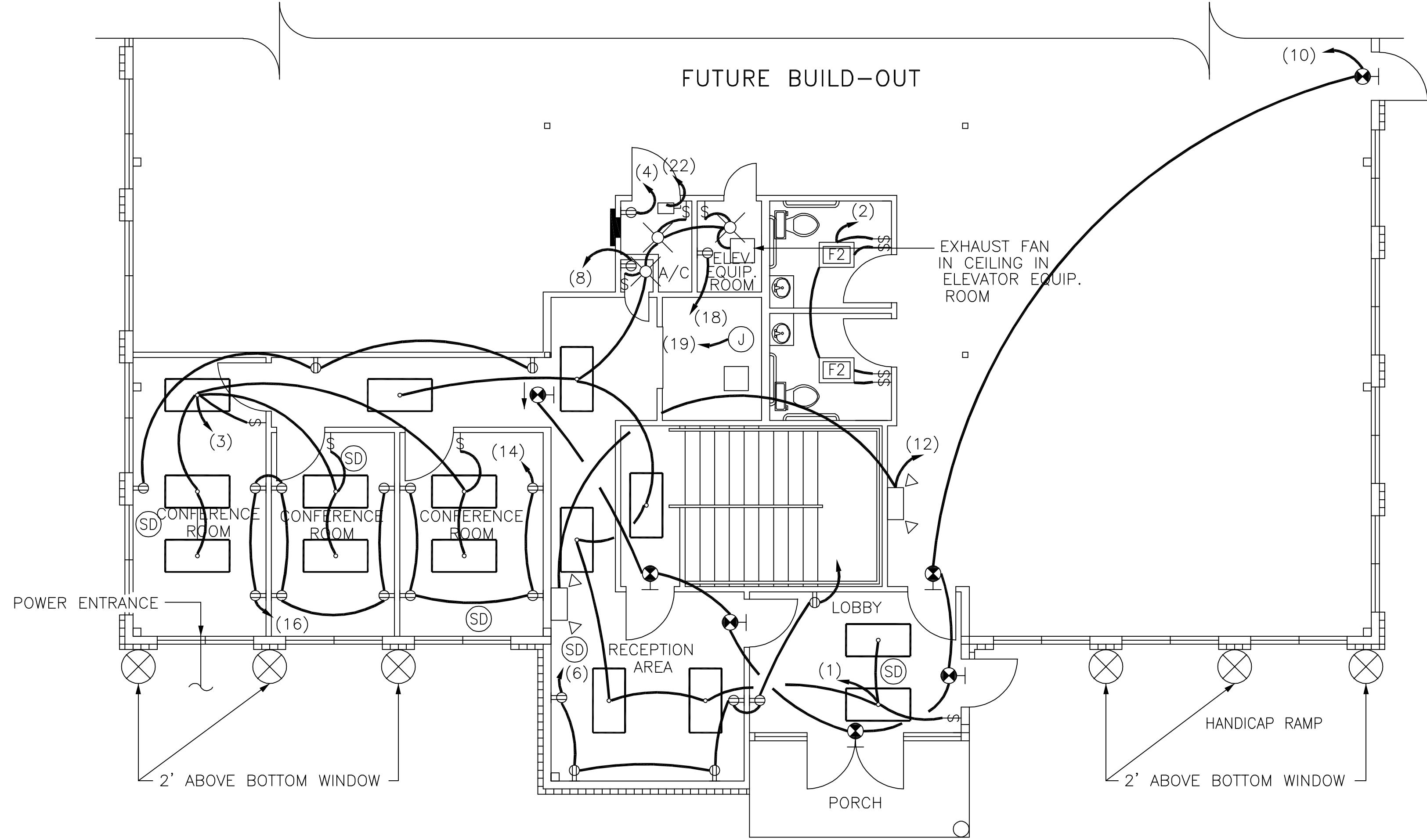


LEGEND

- ⊙ - LIGHT-75W
- [F2] - VENT/LIGHT
- ⊕ - EXIT LIGHT, BATTERY BACK-UP
- - 2x4 FLUORESCENT FIXTURE 4T/F40/C.W.
- ⬆ - EMERGENCY LIGHT, BATTERY BACK-UP
- ⬇ - DOWN LIGHT
- ⊙ (SD) - SMOKE DETECTOR
- ☎ - TELEPHONE/COMPUTER
- ⊞ - POWER PANEL
- ⊞ - SWITCH
- ⊞ (T) - THERMOSTAT WITH LOCK BOX
- ⊞ (WH) - HOT WATER HEATER WITH SAFETY SWITCH (ABOVE BATHROOMS)
- ⊞ - DUPLEX RECEPTACLE
- ⊞ (WP) - WEATHERPROOF OUTLETS
- ⊞ (J) - JUNCTION BOX
- ⊞ (GFI) - GFI
- ⊞ (X) - SUPPLY AIR
- ⊞ (R/A) - RETURN AIR

FIRST FLOOR

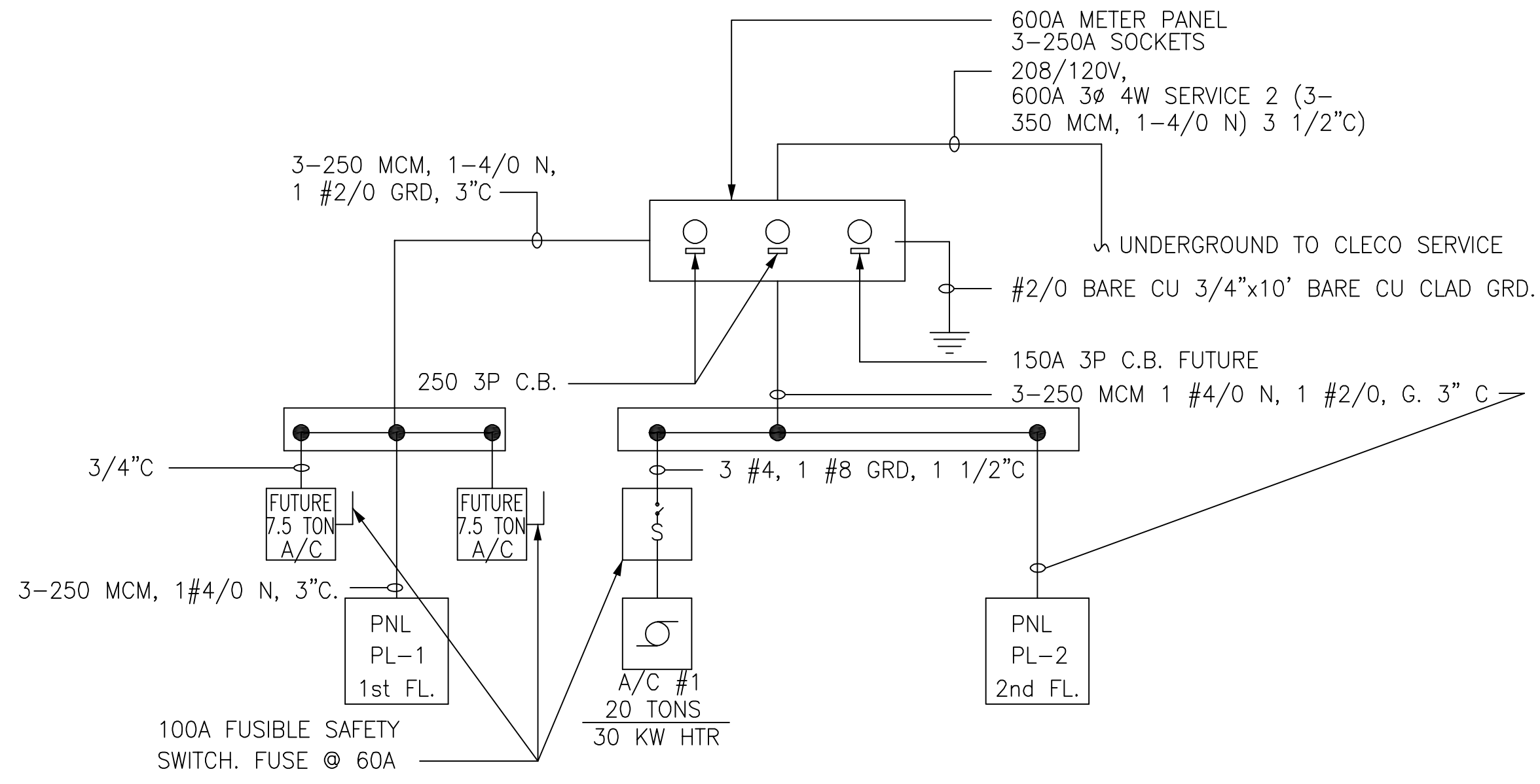
CIR. NO.	LOAD DESCRIPTION	BREAKER	LOAD (VA)	AP			LOAD (VA)	BREAKER	LOAD DESCRIPTION	CIR. NO.
				Φ	Φ	Φ				
1	1ST FLOOR LIGHTS	20 1					1	20	1ST FLOOR TOILET VENT/LIGHT	2
3	1st FLOOR LIGHTS	20 1					1	20	A/C CLOSET OUTLET	4
5	FOUNTAIN	20 1					1	20	1ST FLOOR OUTLETS	6
7	SPRINKLER SYSTEM	20 1					1	20	OUTLET W/ HEATER FOR SPRINKLER SYSTEM	8
9	JUNCTION BOX FOR SIGN	20 1					1	20	1st FLOOR EXIT LIGHTS	10
11	JUNCTION BOX FOR POND	20 1					1	20	1st FLOOR EMERGENCY LIGHTS	12
13	JUNCTION BOX FOR SIGN (FRONT OF PROPERTY)	20 1					1	20	1st FLOOR CONF. ROOM OUTLETS	14
15	JUNCTION BOX FOR SIGN	20 1					1	20	1st FLOOR CONF. ROOM OUTLETS	16
17	JUNCTION BOX FOR SIGN	20 1					1	20	ELEVATOR EQUIP. ROOM OUTLET	18
19	JUNCTION BOX FOR ELEVATOR	20 1					1	20	SPACE	20
21	A/C UNIT #1 R.B. SWITCH	40 2					2	50	HEATER 10 KW	22
23	SPACE	20 1					1	20	SPACE	24
25	SPACE	20 1					1	20	SPACE	26
27	SPACE	20 1					1	20	SPACE	28
29	SPACE	20 1					1	20	SPACE	30
31	SPACE	20 1					1	20	SPACE	32
33	SPACE	20 1					1	20	SPACE	34
35	SPACE	20 1					1	20	SPACE	36
37	SPACE	20 1					1	20	SPACE	38
39	SPACE	20 1					2	60	ELEVATOR	40
41	SPACE	20 1					1	20	SPACE	42



PARTIAL FIRST FLOOR ELECTRICAL PLAN
SCALE: 3/16"=1'-0"

ELECTRICAL NOTES:

1. ALL WORK SHALL CONFORM TO THE LATEST EDITION OF THE NATIONAL ELECTRICAL CODE, THE GOVERNING ELECTRICAL CODE, AND ALL OTHER INSPECTION DEPARTMENTS HAVING JURISDICTION. OBTAIN CERTIFICATES OR APPROVAL WHERE REQUIRED.
2. ALL MATERIALS FURNISHED SHALL BE NEW AND SHALL BE U.L. LISTED.
3. THE DRAWINGS INDICATE SIZE AND GENERAL LOCATION OF WORK. SCALE DIMENSIONS SHALL NOT BE USED. THE EXACT LOCATION AND ELEVATION OF ALL LIGHTING FIXTURES, RECEPTACLES AND TELEPHONE OUTLETS, ETC. SHALL BE DETERMINED BY ACTUAL CONDITIONS IN THE FIELD, UNLESS NOTED OTHERWISE.
4. PRIOR TO BIDDING, CONTRACTOR SHALL VISIT THE JOB SITE AND FAMILIARIZE THEMSELVES WITH THE EXISTING CONDITIONS.
5. ELECTRICAL CONTRACTOR SHALL COORDINATE HIS WORK WITH OTHER TRADES AND WITH OTHER CONTRACTORS WHOSE WORK MAY AFFECT THIS INSTALLATION.
6. ELECTRICAL CONTRACTOR SHALL COORDINATE INCOMING ELECTRICAL SERVICE WITH UTILITY COMPANY AND INCLUDE IN HIS BID ALL CHARGES AND FEES INCURRED IN MODIFICATIONS.
7. WHERE MORE THAN ONE SWITCH OCCURS IN THE SAME LOCATION, THEY SHALL BE INSTALLED IN A GANG TYPE BOX UNDER ONE COVER PLATE.
8. ELECTRICAL CONTRACTOR SHALL COORDINATE THE TELEPHONE INSTALLATION WITH THE TELEPHONE COMPANY AND THE GENERAL CONTRACTOR.
9. ELECTRICAL CONTRACTOR, BEFORE INSTALLING ANY OF THE WORK, SHALL SEE THAT IT DOES NOT INTERFERE WITH CLEARANCES REQUIRED FOR FINISHED COLUMNS, HUNG CEILINGS, PLASTER, PARTITIONS, WALLS, ETC. AS SHOWN IN THE ARCHITECTURAL DRAWINGS AND DETAILS. IF ANY WORK IS INSTALLED AND IT LATER DEVELOPS THAT SUCH DETAILS OR DESIGN CANNOT BE FOLLOWED, THE CONTRACTOR, AT HIS OWN EXPENSE, SHALL MAKE SUCH CHANGES IN THE WORK AS DIRECTED BY THE ARCHITECT. AS WELL AS TO PERMIT THE INSTALLATION OF THE ARCHITECTURAL WORK AS SHOWN ON THE PLANS AND DETAILS.
10. PERFORM TEST REQUIRED BY THE OWNER OR THE ENGINEER IN CONNECTION WITH THE OPERATION OF THE ELECTRICAL SYSTEM IN THE BUILDING.
11. ALL TESTS SHALL BE MADE IN ACCORDANCE WITH THE LATEST STANDARD OF THE IEEE AND THE NATIONAL ELECTRICAL CODE.
12. MINIMUM CONDUCTOR SIZE SHALL BE #12, 600V INSULATION. MINIMUM SIZE CONDUIT SHALL BE 3/4" EMT FOR INTERIOR USE, AND 3/4" RIGID ALUMINUM FOR EXTERIOR USE. USE TYPE NMC CABLE IN CONTROL RM BLDG. FOR LIGHTS & RECEPTACLE CIRCUITS. EXTERIOR FITTINGS SHALL BE CAST BOXES AND COVERS. INTERIOR FITTINGS SHALL BE CAST WHERE EXPOSED ON WALLS. STAMPED BOXES MAY BE USED ABOVE CEILINGS IN AIR CONDITIONED SPACES.
13. CONTRACTOR SHALL INSTALL WIRING AND OTHER CIRCUIT COMPONENTS TO MATCH EQUIPMENT ACTUALLY INSTALLED.
14. INSTALL GROUND FAULT RECEPTACLES AT RECEPTACLE LOCATIONS WITHIN 5' OF SINKS OR LAVATORIES, AND AT EXTERIOR LOCATIONS. EXTERIOR RECEPTACLES SHALL ALSO BE WEATHERPROOF.
15. BONDING AND GROUNDING SHALL BE IN ACCORDANCE WITH NFPA 70:230-63, NFPA 250-23, 250-71, & 250-72.
16. GROUND NEUTRAL IN ACCORDANCE WITH NFPA 70:250-23b.
17. FUSES SHALL BE IIT CLASS K5, 250 VOLT, 200,000 AMP INTERRUPTING CAP.
18. PROVIDE SERVICES OF A FIRE/SMOKE DETECTION & ALARM COMPANY TO DESIGN & INSTALL ALARM SYSTEM TO MEET REQUIREMENTS OF THE STATE FIRE MARSHALL.
19. EXTERIOR LIGHTING SHALL BE SHADED OR INWARDLY DIRECTED IN SUCH A MANNER SO THAT NO DIRECT LIGHTING OR GLARE IS CAST BEYOND THE PROPERTY LINE. THE INTENSITY OF SUCH LIGHTING SHALL NOT EXCEED ONE FOOT CANDLE AS MEASURED AT THE ABUTTING PROPERTY LINE.



ELECTRICAL RISER DIAGRAM
N.T.S.

REVISED 2/21/03

NEW OFFICE BUILDING
SECOND FLOOR ELECTRICAL
OAK HARBOR DR.
SLIDELL, LOUISIANA

ABEK REAL ESTATE
DAMMON ENGINEERING, INC.
ARCHITECTS - ENGINEERS
2000 OLD SPANISH TRAIL, STE. 100, 985-649-5832
SLIDELL, LA. 70458
DAMMONENGINEERING.COM

SCALE: AS NOTED
FILE:
JOB NO. 1489
DATE: 2-21-03
SHEET
E - 1
OF