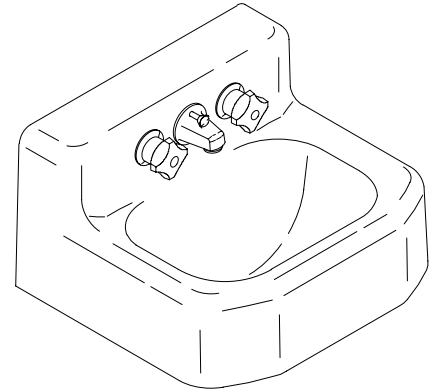


WALL-MOUNT LAVATORY

K-2753

FEATURES

- 13" x 13"
- Cast iron
- Wall-mount
- Shelf-back
- With overflow
- Factory installed K-8048-2A Triton faucet with chain and stopper drain, aerator
- Less K-8048-2A Triton faucet (-EH)



CODES/STANDARDS APPLICABLE

Specified model meets or exceeds the following:

- ASME/ANSI A112.19.1M
- IAPMO/UPC
- Canadian Standards Association (CSA)
- State of Massachusetts

COLORS/FINISHES

- 0 White

SPECIFIED MODEL:

Model	Description	Colors/Finishes
K-2753	Wall-mount lavatory with faucet	<input type="checkbox"/> 0 White
K-2753-EH	Wall-mount lavatory less faucet	<input type="checkbox"/> 0 White

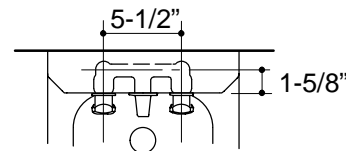
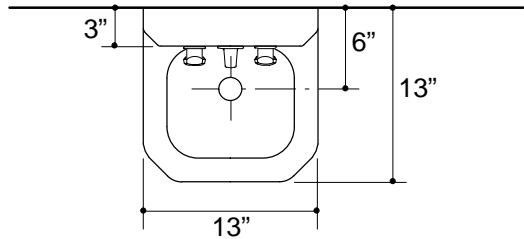
PRODUCT SPECIFICATION:

The shelf-back, wall-mount lavatory shall be 13" in length, and 13" in width. Lavatory shall be made of cast iron. Lavatory shall have overflow. Lavatory shall have factory installed K-8048-2A Triton lavatory faucet with chain and stopper drain, aerator, or be less faucet (-EH). Lavatory shall be Kohler Model K-2753-_____-_____.

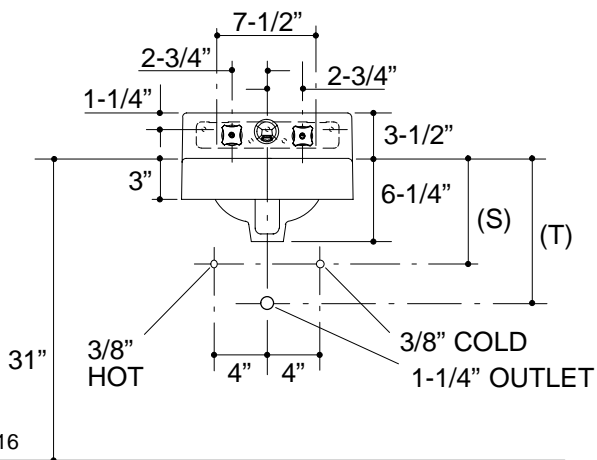
TRAILER™

PRODUCT INFORMATION

Fixture*:		basin area	water depth
Lavatory		10" x 8"	3"
Outlet	1-11/16" D.		
* Approximate measurements for comparison only.			
Holes	K-2753		
Spout	1-1/2" D.		
Faucet	1-3/16" D.		
Included Components:			
Triton faucet		K-8048-2A	
Hanger (1)		64508	
Overflow ferrule (1)		44071	



FAUCET DETAIL



Roughing-In Notes
(T) Drain 11".
Pop-up drain cannot be used on this lavatory.
(S) 8" (Based on 12" riser which may require cutting).

PRODUCT DIAGRAM