

K-7416§
K-7417§
K-7419§

TRITON

LAVATORY FITTING

K-7436§
K-7437§
K-7439§

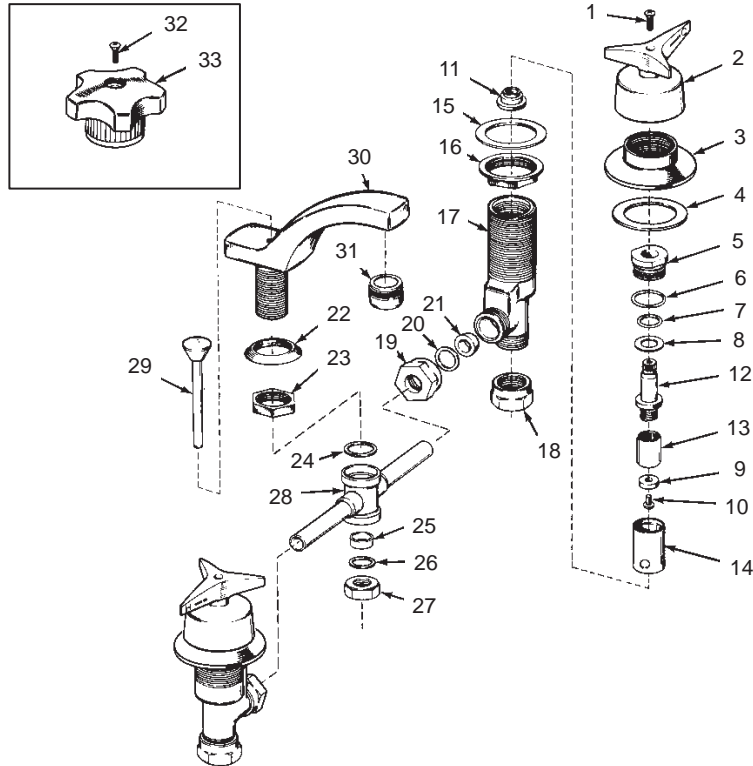
CONSTELLATION

LAVATORY FITTING

ORDER BY KIT NUMBER OR PART NUMBER, NOT ITEM NUMBER OR KIT LETTER.

Ordering Options

Item	Part No. or Kit
1	B or C
2	D
3	E
4	35715
5	20475
6, 7, 8, 9, 10, 11	A, F, or G
12, 13, 14	F or G
15, 16	H
17	I or J
18, 19	K
20, 21, 22, 23, 24,	L
25, 26, 27	L
28	35823
29	51196‡
30	M or N
31	41007‡
32	O
33	P



Kit Ordering Information

Kit	Kit Part No.	Kit Name	Kit Contents
A	30294	Valve Rebuilding	2 ea., Items 6 thru 11
B	30107‡	Screw (Roundhead)	2 ea., Item 1
C	30097‡	Screw (Countersunk)	2 ea., Item 1
D	30030‡	Triton Handle	1 ea. Hot, 1 ea. Cold; Item 2
E	30078‡	Escutcheon	2 ea., Item 3
F	30002	Valve Replacement (Closes Clockwise)	1 ea., Items 6 thru 14
G	30004	Valve Replacement (Closes Counterclockwise)	1 ea., Items 6 thru 14
H	30231	Attachment S.A.	2 ea., Items 15 and 16
I	34303	Valve Body 4-1/4"	1 ea., Item 17
J	20480	Valve Body 5"	1 ea., Item 17
K	30230	Coupling Nut	2 ea., Item 18 or 19
L	30229	Gasket/Washer	2 ea., Items 20 and 21; 1 ea., Items 22 thru 27
M	29709‡	Spout 4" C to C	1 ea., Item 30
N	29710‡	Spout 5" C to C	1 ea., Item 30
O	30109‡	Screw	2 ea., Item 32
P	30019‡	Constellation Handle	2 ea., Item 33

KITS MAY INCLUDE EXTRA PARTS

NOTES:

For pop-up drain see K-7701.

LEGEND:

‡ Specify Finish.
§ Reference Number Only.