

K-6850

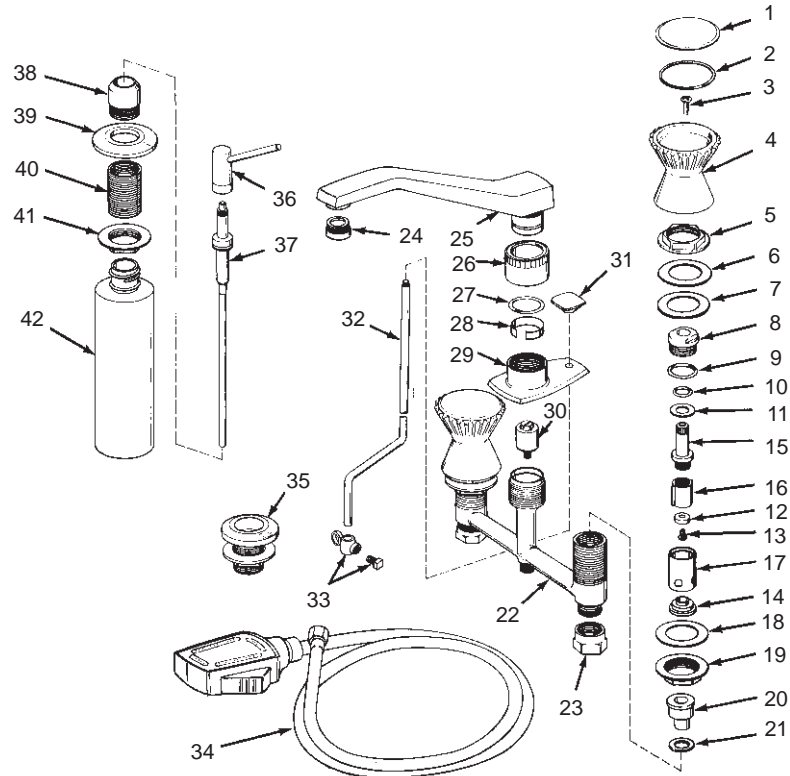
BRAVURA

MAN'S LAV FITTING

ORDER BY KIT NUMBER OR PART NUMBER, NOT ITEM NUMBER OR KIT LETTER.

Ordering Options

Item	Part No. or Kit
1	48695‡
2	48694
3	B
4	48697‡
5, 6, 7	C
8	20475
9, 10, 11, 12,	A
13, 14	A
15, 16, 17	D
18, 19	E
20, 21	F
22	*
23	G
24, 25, 26	H
27	29464, H
28	41495, H
29	41309‡
30	43262
31	29700
32	41315‡
33	I
34	41379‡
35	34329‡
36	41385‡
37	41382
38, 39, 40, 41	J
42	41381



Kit Ordering Information

Kit	Kit Part No.	Kit Name	Kit Contents
A	30294	Valve Rebuilding	2 ea., Items 9 thru 14
B	30105‡	Screw	2 ea., Item 3
C	30234	Attachment S.A.	2 ea., Items 5, 6, and 7
D	30002	Valve Replacement	1 ea., Items 9 thru 17
E	30234‡	Nut S.A.	2 ea., Items 18 and 19
F	30232	Extension Gasket	2 ea., Items 20 and 21
G	30230‡	Coupling Nut	2 ea., Item 23
H	41308‡	Spout-Nut Assembly	1 ea., Items 24 thru 28
I	30235	Link S.A.	1 ea., Item 33
J	30236‡	Bottle Attachment	1 ea., Items 38 thru 41

KITS MAY INCLUDE EXTRA PARTS

NOTES:

* Not available as a service part.
For pop-up drain, see K-7701.

LEGEND:

‡ Specify Finish.