

K-7445-T

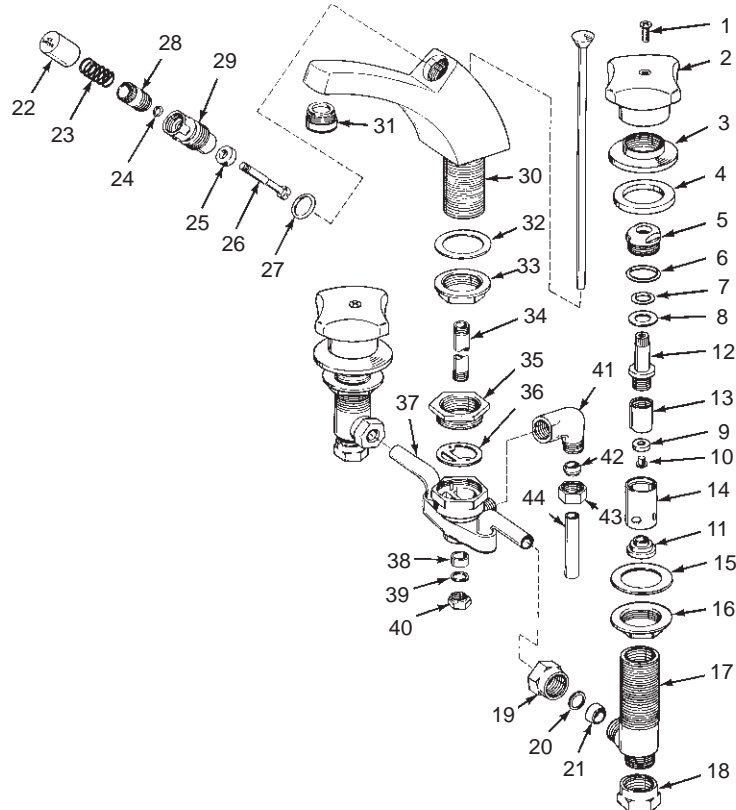
TRITON II

BANCROFT LAVATORY FITTING

ORDER BY KIT NUMBER OR PART NUMBER, NOT ITEM NUMBER OR KIT LETTER.

Ordering Options

Item	Part No. or Kit
1	B
2	C
3	D
4	35715
5	20475
6, 7, 8, 9, 10, 11	A, E
12, 13, 14	E
15, 16	F
17	34303
18, 19	G
20, 21	H
22	34400‡
23, 24, 25, 26, 27	I
28	34517
29	34399
30	*
31	41007‡
32, 33	J
34	*
35	34388
36	34390
37	*
38, 39, 40	H
41	34158
42, 43	K
44	34392



Kit Ordering Information

Kit	Kit Part No.	Kit Name	Kit Contents
A	30294	Valve Rebuilding	2 ea., Items 6 thru 11
B	30097‡	Screw	2 ea., Item 1
C	30021‡	Triton II handle	1 ea. Hot, 1 ea. Cold; Item 2
D	30078‡	Escutcheon	2 ea., Item 3
E	30002	Valve Replacement	1 ea., Items 6 thru 14
F	30231	Attachment S.A.	2 ea., Items 15 and 16
G	30230	Coupling Nut	2 ea., Items 18 or 19
H	30229	Gasket	2 ea., Items 19 and 20; 1 ea., Items 38, 39, and 40
I	30239	Valve Rebuilding	1 ea., Items 23 thru 27
J	30231	Attachment S.A.	2 ea., Items 32 and 33
K	30238	Ferrule S.A.	1 ea., Items 42 and 43

KITS MAY INCLUDE EXTRA PARTS

NOTES:

- * Not available as a service part.
- For pop-up drain see K-7701.

LEGEND:

- ‡ Specify Finish.