

# KOHLER® SERVICE PARTS

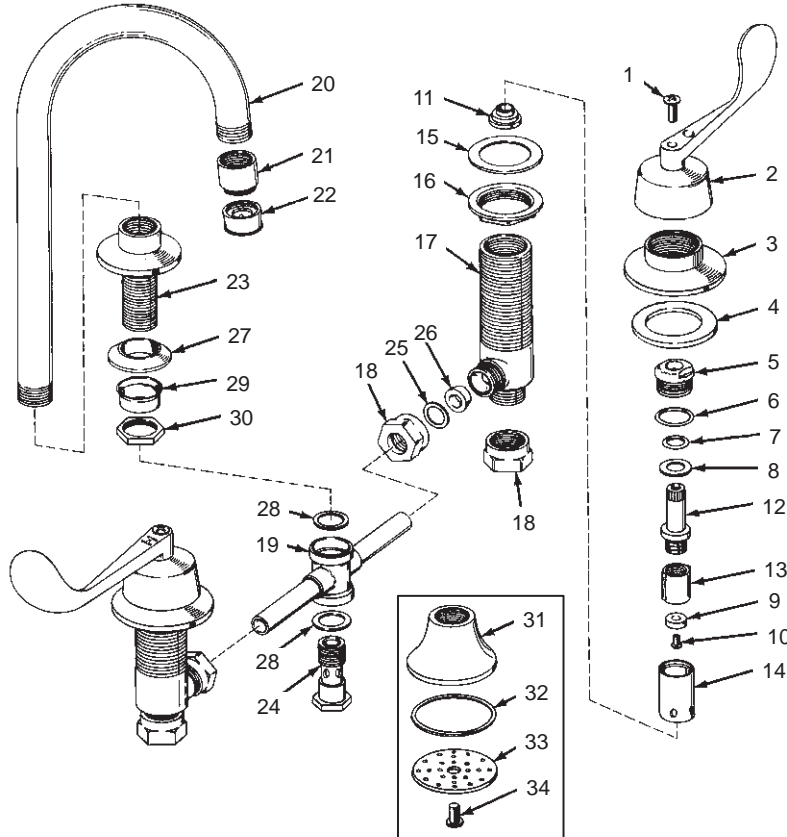
## COMMERCIAL FITTINGS

**K-13341** LAVATORY FITTING WITH 4" WRIST HANDLES AND AERATOR  
**K-13343** LAVATORY FITTING WITH 4" WRIST HANDLES AND SPRAY  
**K-13388** LAVATORY FITTING WITH TRITON II HANDLES AND AERATOR  
**K-13344** LAVATORY FITTING (12" CENTERS)  
**RIGID CONNECTION – GOOSENECK SPOUT**

ORDER BY KIT NUMBER OR PART NUMBER, NOT ITEM NUMBER OR KIT LETTER.

### Ordering Options

Item	Part No. or Kit
1	B or C
2	D or E
3	F
4	35715
5	20475
6, 7, 8, 9, 10, 11	A, H or I
12, 13, 14	H or I
15, 16	G
17	34303
18	J
19	K or L
20	*
21	33968‡
22	37725‡
23	34577‡
24	35810
25, 26, 27, 28,	M
29, 30	M
31	N
32, 33, 34	N, O



### Kit Ordering Information

Kit	Kit Part No.	Kit Name	Kit Contents
A	30294	Valve Rebuilding	2 ea., Items 6 thru 11
B	30105‡	Screw for Wrist Handles	2 ea., Item 1
C	30097‡	Screw for Triton II Handle	2 ea., Item 1
D	30061‡	4" Wrist Handle	1 ea. Hot, 1 ea. Cold; Item 2
E	30022‡	Triton II Handle (Not Illustrated)	1 ea. Hot, 1 ea. Cold (not illustrated)
F	30078‡	Escutcheon	2 ea., Item 3
G	30231	Attachment S.A.	2 ea., Items 15 and 16
H	30135	Valve Replacement (Closes Clockwise)	1 ea., Items 6 thru 14
I	30134	Valve Replacement (Closes Counterclockwise)	1 ea., Items 6 thru 14
J	30230	Coupling Nut	2 ea., Item 18
K	35824	8" Cross Connection	1 ea., Item 19
L	35834	12" Cross Connection	1 ea., Item 19
M	30299	Gasket	2 ea., Items 25 thru 28; 1 ea., Items 29 and 30
N	29614	Spray Head S.A.	1 ea., Items 31 thru 34
O	30341	Spray Face	1 ea., Items 32, 33, and 34

### KITS MAY INCLUDE EXTRA PARTS

#### NOTES:

Other Product Numbers Using Same Parts  
 K-13328  
 K-13329  
 K-13330  
 \* Not available as a service part.

#### LEGEND:

‡ Specify Finish.