

# KOHLER® SERVICE PARTS

## LAVATORY FITTINGS

K-13328  
K-13330

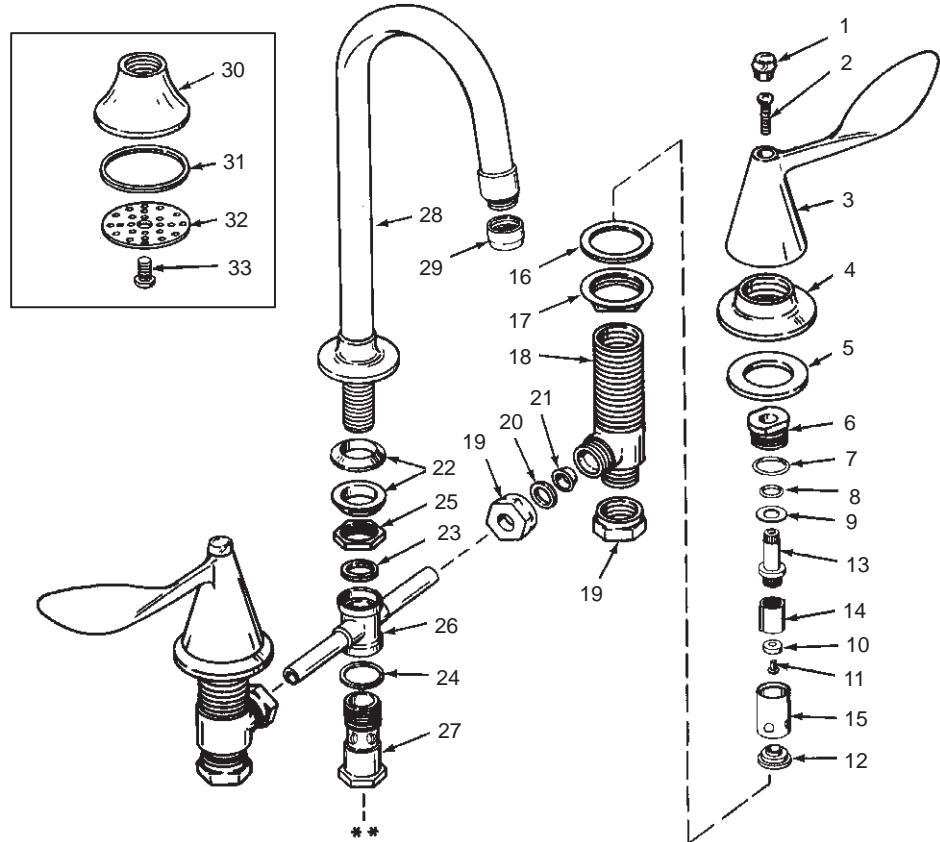
FINESSE  
FINESSE

GOOSENECK LAVATORY FITTING W/SPRAY  
GOOSENECK LAVATORY FITTING W/AERATOR

ORDER BY KIT NUMBER OR PART NUMBER, NOT ITEM NUMBER OR KIT LETTER.

### Ordering Options

Item	Part No. or Kit
1	B
2	C
3	D
4	E
5	35715
6	20475
7, 8, 9, 10, 11, 12	A, F, or G
13, 14, 15	F or G
16, 17	H
18	20480
19	I
20, 21, 22, 23, 24, 25	J
26	35834
27	35810
28	*
29	K
30	L
31, 32, 33	L, M



### Kit Ordering Information

Kit	Kit Part No.	Kit Name
A	30294	Valve Rebuilding
B	30335	Plug Button
C	30336	Screw
D	30333‡	Finesse Handle (Large)
E	30078‡	Escutcheon
F	30134	Valve Replacement (Closes Counterclockwise)
G	30135	Valve Replacement (Closes Clockwise)
H	30231	Attachment S.A.
I	30230	Coupling Nut
J	30229	Gasket
K	37725‡	Aerator
L	29614‡	Spray Head Assembly
M	30341‡	Spray Face S.A.

### Kit Contents

2 ea., Items 7 thru 12  
 1 ea. Hot, 1 ea. Cold; Item 1  
 2 ea., Item 2  
 2 ea., Item 3  
 2 ea., Item 4  
 1 ea., Items 7 thru 15  
 1 ea., Items 7 thru 15  
 2 ea., Items 16 and 17  
 2 ea., Item 19  
 2 ea., Items 20 thru 25  
 1 ea., Item 29  
 1 ea., Items 30 thru 33  
 1 ea., Item 31, 32, 33

### KITS MAY INCLUDE EXTRA PARTS

#### NOTES:

- \* Not available as a service part.
- \*\* For pop-up drain, see K-7701.

#### LEGEND:

- ‡ Specify Finish.