

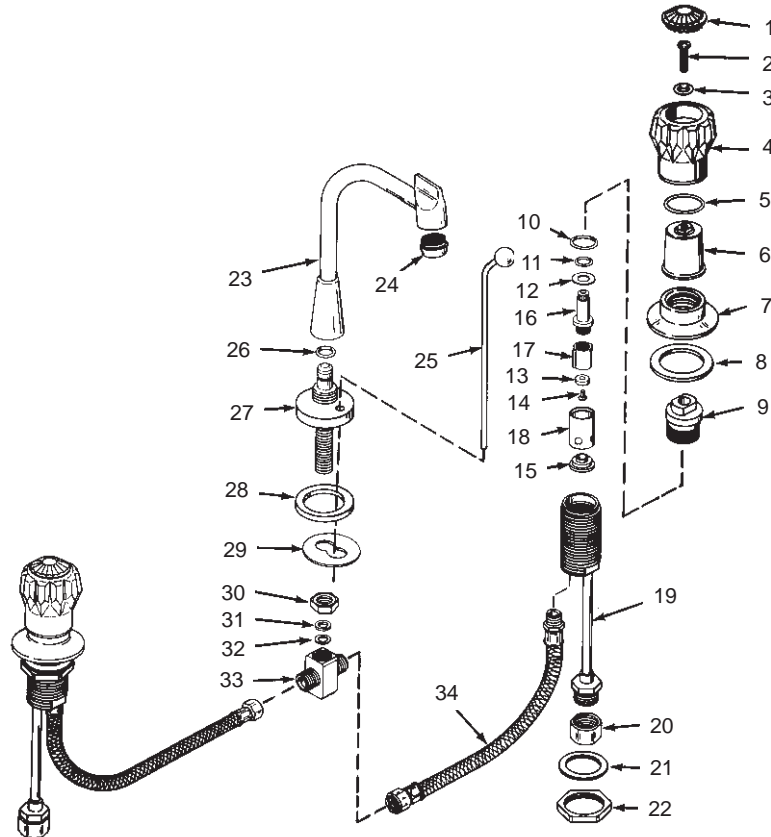
K-7433-DB FLAIR II

MULTI-SWIVEL WIDESPREAD LAVATORY FITTING

ORDER BY KIT NUMBER OR PART NUMBER, NOT ITEM NUMBER OR KIT LETTER.

### Ordering Options

| Item                   | Part No. or Kit |
|------------------------|-----------------|
| 1, 2, 3, 4, 5, 6       | L               |
| 7                      | B               |
| 8                      | 34037           |
| 9                      | 40002           |
| 10, 11, 12, 13, 14, 15 | A, C            |
| 16, 17, 18             | C               |
| 19                     | 40004           |
| 20, 21, 22             | D               |
| 23                     | E or F          |
| 24                     | 41056‡          |
| 25                     | G or H          |
| 26                     | 42045           |
| 27                     | 30403‡          |
| 28, 29                 | I               |
| 30, 31, 32, 33         | J               |
| 34                     | K               |



### Kit Ordering Information

| Kit | Kit Part No. | Kit Name                            | Kit Contents                |
|-----|--------------|-------------------------------------|-----------------------------|
| A   | 30294        | Valve Rebuilding                    | 2 ea., Items 10 thru 15     |
| B   | 30077 ‡      | Escutcheon                          | 2 ea., Item 7               |
| C   | 30002        | Valve Replacement                   | 1 ea., Items 10 thru 18     |
| D   | 30332        | Attachment S.A.                     | 2 ea., Items 20, 21, and 22 |
| E   | 40216 ‡      | Spout Assembly (Plated Finish)      | 1 ea., Item 23              |
| F   | 40219        | Spout Assembly (Epoxy-Coated Brass) | 1 ea., Item 23              |
| G   | 40151 ‡      | Lift Rod (Plated Finish)            | 1 ea., Item 25              |
| H   | 40156        | Lift Rod (Epoxy-Coated Brass)       | 1 ea., Item 25              |
| I   | 30337        | Gasket/Washer                       | 1 ea., Items 28 and 29      |
| J   | 40036        | Tee Assembly                        | 1 ea., Items 30 thru 33     |
| K   | 30233        | Flexible Hose                       | 2 ea., Item 34              |
| L   | 106299 §■    | Flair, Flair II Handle Options      | See INDEX.                  |

### KITS MAY INCLUDE EXTRA PARTS

#### NOTES:

For pop-up drain see K-7701.

#### LEGEND:

- ‡ Specify Finish.
- § Reference Number Only.
- Parts further exploded in catalog; see INDEX.