

KOHLER® SERVICE PARTS

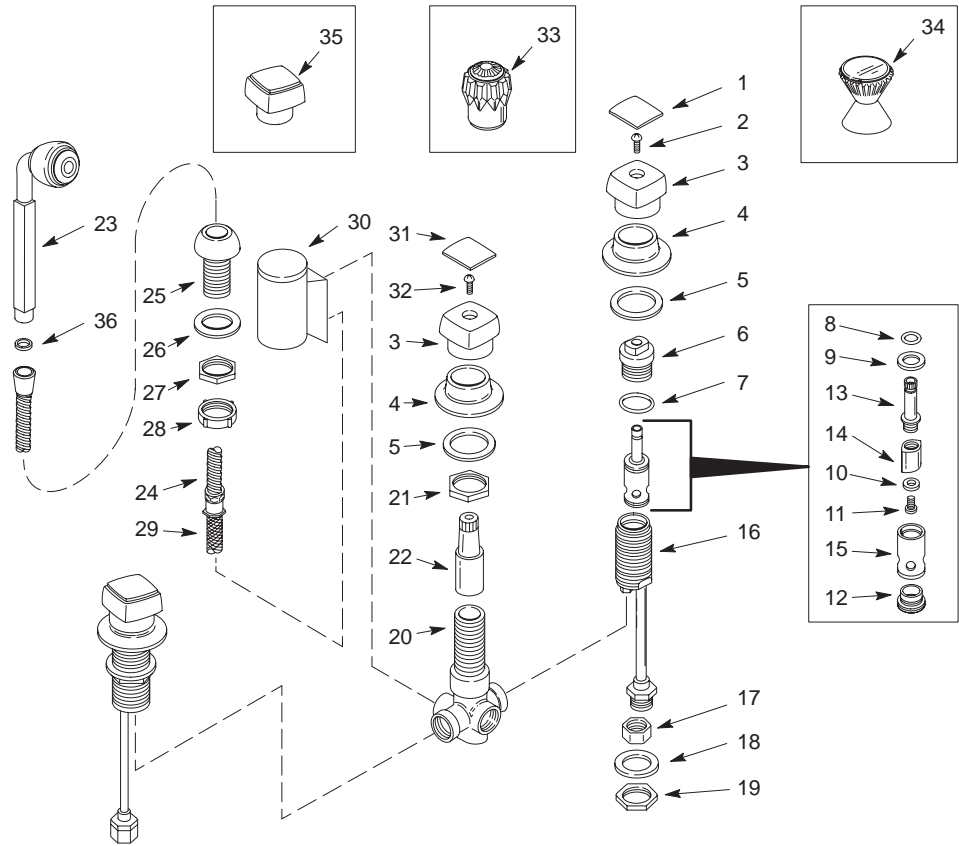
BATH AND SHOWER FITTINGS

K-6843	BRAVURA	PERSONAL SHOWER SYSTEM
K-6949	ALTERNA	PERSONAL SHOWER SYSTEM
K-6949-R	ALTERNA	PERSONAL SHOWER SYSTEM
K-7024-DB	FLAIR II	PERSONAL SHOWER SYSTEM

ORDER BY KIT NUMBER OR PART NUMBER, NOT ITEM NUMBER OR KIT LETTER.

Ordering Options

Item	Part No. or Kit
1	29716-0 (Hot) 46093-0 (Cold)
2	A
3	29718 †
4	B or C
5	M
6	40002
7 thru 12	D, E
13, 14, 15	E
16	*
17, 18, 19	F
20, 21, 22	G
23	21486 †
24	21481 †
25 thru 28	H
29	21485
30	K-13056 † ■
31	I
32	23335
33	J
34	K
35	L
36	41163



Kit Ordering Information

Kit	Kit Part No.	Kit Name	Kit Contents
A	30105 †	Screws	2 ea., item 2
B	30077 †	Escutcheons (Alterna/Flair)	2 ea., item 4
C	21480 †	Escutcheons (Bravura)	2 ea., item 4
D	30294	Valve Service Kit	2 ea., items 7 thru 12
E	30002	Valve Assembly	1 ea., items 7 thru 15
F	30332	Mounting Hardware	2 ea., items 17, 18 and 19
G	500469**	Diverter Valve Retrofit Kit	1 ea., items 20, 21, and 22
H	21484 †	Hose Guide Assembly	1 ea., items 25 thru 28
I	30634***	Index Cap (Alterna)	1 ea., item 31
J	106299§	Flair II Handle Options (Large)	See INDEX.
K	106890§	Bravura Handle Options (Large)	See INDEX.
L	106478§	Alterna Handle Options (Large)	See INDEX.
M	30340	Gasket Kit	2 ea., item 5

KITS MAY INCLUDE EXTRA PARTS

NOTES:

- * Not available as a service part.
- ** Replacement differs substantially from original. Refer to instructions packaged with kit.
- *** Available in black or white.

LEGEND:

- † Specify finish.
- § Reference number only.
- Parts further exploded in catalog, see INDEX.
- Shading indicates product discontinued.