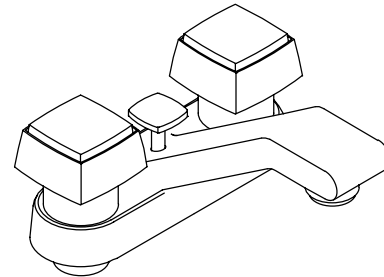


**LAVATORY FAUCET
K-6950-2**

FEATURES

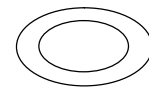
- Brass construction
- For 4" centers
- Brass valve bodies
- Quarter-turn washerless ceramic disc valves
- 4-1/2" spout
- 2.0 gallons per minute
- Pop-up drain with lift rod and tailpiece
- Square handles
- Includes matching brushed metal handle insets



CODES/STANDARDS APPLICABLE

Specified model meets or exceeds the following:

- ASME/ANSI A112.18.1M
- CSA B125
- Energy Policy Act of 1992
- IAPMO/UPC
- NSF 61

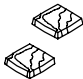
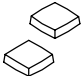
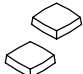



COLORS/FINISHES

- CP Polished Chrome
- PB Polished Brass
- Other Refer to Faucets Price Book for additional finishes

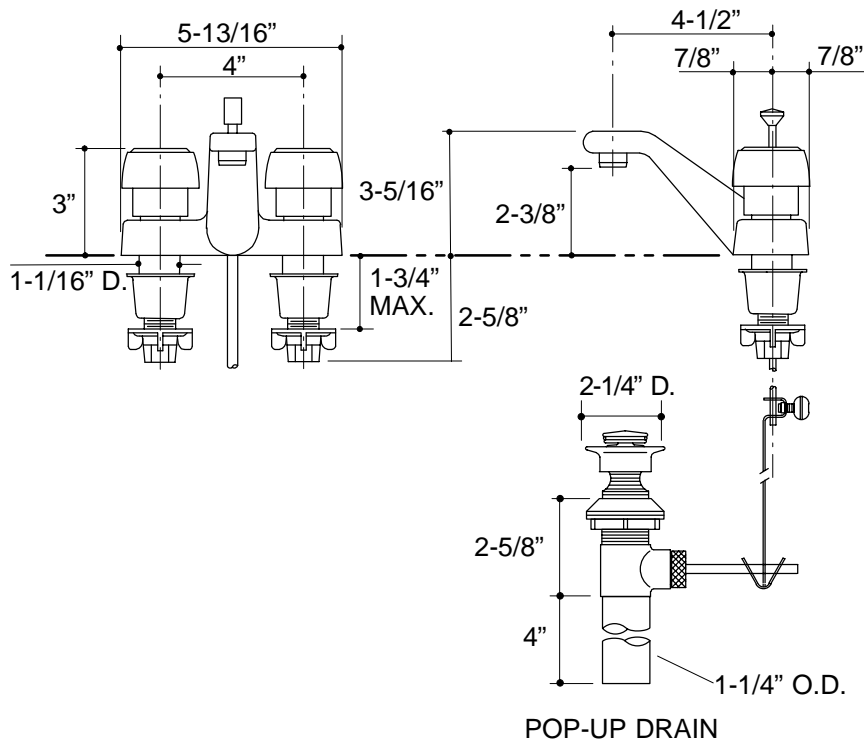
SPECIFIED MODEL:

Model	Description			
K-6950-2	Alterna Centerset Lavatory Faucet	<input type="checkbox"/> CP	<input type="checkbox"/> PB	<input type="checkbox"/> Other_____

Optional Accessories					
	K-9916	Small Handle Stone Insets, Pair			<input type="checkbox"/> Other_____
	K-9924	Small Handle Metal Insets, Pair	<input type="checkbox"/> CP	<input type="checkbox"/> PB	<input type="checkbox"/> Other_____
	K-9927	Small Handle Ceramic Insets, Pair			<input type="checkbox"/> Other_____
	K-9933	Small Handle Champeve Insets, Pair			<input type="checkbox"/> Other_____

PRODUCT SPECIFICATION:

Two-handle centerset lavatory faucet shall be of brass construction. Faucet shall feature brass valve bodies. Faucet shall feature quarter-turn washerless ceramic disc valves, assuring positive handle stop positioning. Product shall include 4" centers, 4-1/2" spout, pop-up drain with lift rod and tailpiece, and square handles with matching brushed metal insets. Faucet shall be Kohler Model K-6950-2-_____.



PRODUCT DIAGRAM