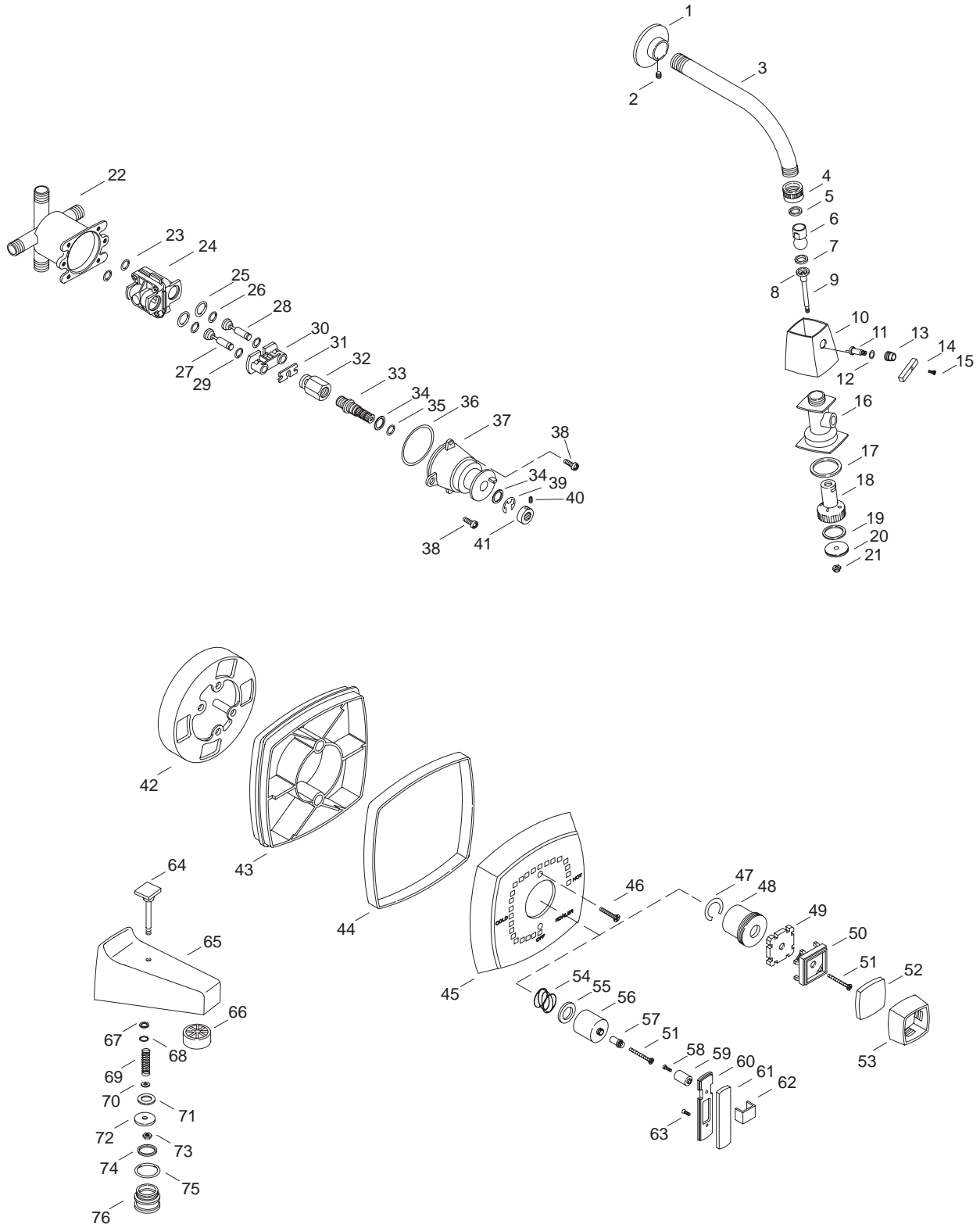


KOHLER[®] SERVICE PARTS

ALTERNA™ RITE-TEMP™
BATH AND SHOWER FAUCETS
K-6900-N-**-AA, K-6900-N-**-BA
K-6900-LV-**-AA, K-6900-LV-**-BA



Variation and/or finish/color code may be required when ordering.

SERVICE PARTS

ITEM	PART NO.	DESCRIPTION
1		Available in Service Kit Only
2	32966	Screw, 8-32 UNC-2A x .188
3	24898	Shower Arm
4	50617	Lock Nut
5	50622	Washer
6	57346	Ball Joint Assembly
7	56034	O-Ring, -.209 x .671
8	29742	Barrel, Shower Head
9	29738	Rod, 1/4-28 UNF x 2.953
10	29732	Showerhead Shroud
11		Available in Service Kit Only
12		Available in Service Kit Only
13	29740	Retainer
14	29743	Handle, Showerhead
15	29476	Screw, 6-3 2NC -2A x.313
16		Available in Service Kit Only
17	29736	Seal, 1.24 ID x 1.93 OD
18	29731	Shower Face Showerhead
19	29735	Seal, 1.33 ID x 1.52 OD
20	58008	Face, Square Showerhead
21	29737	Nut, Cap 1/4-28 UNF x 3/8
22	71916	Body, Valve, w/o Stop Bodies
23	52480	O-Ring, -.013 x .426
24		Available in Service Kit Only
25	52479	O-Ring, -.016 x .614
26	52478	O-Ring, -.108 x .237
27		Available in Service Kit Only
28		Available in Service Kit Only
29	51251	O-Ring
30	52450	Retainer Plate
31	52454	Stem Bar
32	52455	Stem
33	52453	Spindle
34	52456	Washer
35	52457	O-Ring, -.011 x .301
36	52477	O-Ring, -.031 x 1.739
37	52451	Cap
38	21980	Screw, .250-20 UNC-2A
39	50541	E-Ring
40	20925	Screw, .164-32 UNC-2A
41	52452	Collar, Spindle
42	58564	Plaster Guard
43	52830	Support
44	52375	Gasket
45	52487	Face Plate
46	52705	Screw
47	45034	Retainer Ring
48	55357	Skirt Base
49	22490	Adapter, Handle
50	22454	Holder, Insert Large
51	53414	Screw, .164-32 UNC-2A
52	46059	Insert Pack, Large
53	22491	Shell, Large
54	42286	Spring
55	73277	Friction Spacer
56	54548	Skirt
57	54547	Spline Adapter
58	54545	Screw, .112-40 UNC-3A
59	54546	Handle Post
60	52554	Lower Lever, Alterna
61	52546	Insert, Brass Lever
62	52543	Strap, Lever Handle, Alterna
63	52779	Screw, .112-40 UNC-3A

ITEM	PART NO.	DESCRIPTION
64	29729	Knob & Stem Assembly
65	29725	Diverter Spout Subassembly
66	38808	Bath Stream Breaker
67	32698	O-Ring, 010
68	20728	Washer, .270 x 3/8
69	20494	Spring
70	59391	Washer
71	51290	Gasket
72	59347	Seal Plate, Diverter
73	41491	Nut, 10-24 NC-2B (for kit 30147)
	41517	Nut, 10-24 NC-2B (for kit 29724)
74	38677	Gasket, 1.138 ID x 1.245 OD
75	38676	O-Ring, -.024 x 1.114
76	38675	Cap, Diecast Diverter Spout

SERVICE KITS

PART NO.	ITEM NO.	QTY.	DESCRIPTION
20345			Flange & Set Screw Assembly
	1	1 ea.	Flange for Shower Arm
	2	1 ea.	Screw, 8-32 UNC-2A x .188
20350			Shower Arm Assembly
	1	1 ea.	Flange for Shower Arm
	2	1 ea.	Screw, 8-32 UNC-2A x .188
	3	1 ea.	Shower Arm
73749			Stem & Body Kit
	11	1 ea.	Stem, Square Shower
	12	1 ea.	O-Ring
	16	1 ea.	Body Square Showerhead
500521			Pressure Balancing Service Kit
	23	2 ea.	O-Ring, -.013 x .426
	24	1 ea.	Body Subassembly
	25	2 ea.	O-Ring, -.016 x .614
	26	2 ea.	O-Ring, -.108 x .237
	27	1 ea.	Plunger, Cold
	28	1 ea.	Plunger, Hot
	29	1 ea.	O-Ring
	30	1 ea.	Retainer Plate
	31	1 ea.	Stem Bar
	32	1 ea.	Stem
	33	1 ea.	Spindle
	34	2 ea.	Washer
	35	1 ea.	O-Ring, -.011 x .301
	36	1 ea.	O-Ring, -.031 x 1.739
	37	1 ea.	Cap
	38	2 ea.	Screw, .250-20 UNC-2A
	39	1 ea.	E-Ring
	40	1 ea.	Screw, .164-32 UNC-2A
	41	1 ea.	Collar, Spindle
500520			Pressure Balancing Body
	23	2 ea.	O-Ring, -.013 x .426
	24	1 ea.	Body Subassembly
	25	2 ea.	O-Ring, -.016 x .614
	26	2 ea.	O-Ring, -.108 x .237
	27	1 ea.	Plunger, Cold
	28	1 ea.	Plunger, Hot
	29	1 ea.	O-Ring
30147			Valve Service Kit
	73	1 ea.	Spring
	60	1 ea.	Washer
	61	1 ea.	Seal Plate, Diverter
	62	1 ea.	Nut, 10-24 NC-2B
	63	1 ea.	Gasket
	74	1 ea.	Gasket, 1.138 ID x 1.245
	75	1 ea.	O-Ring, -.024 x 1.114 OD

Variation and/or finish/color code may be required when ordering.