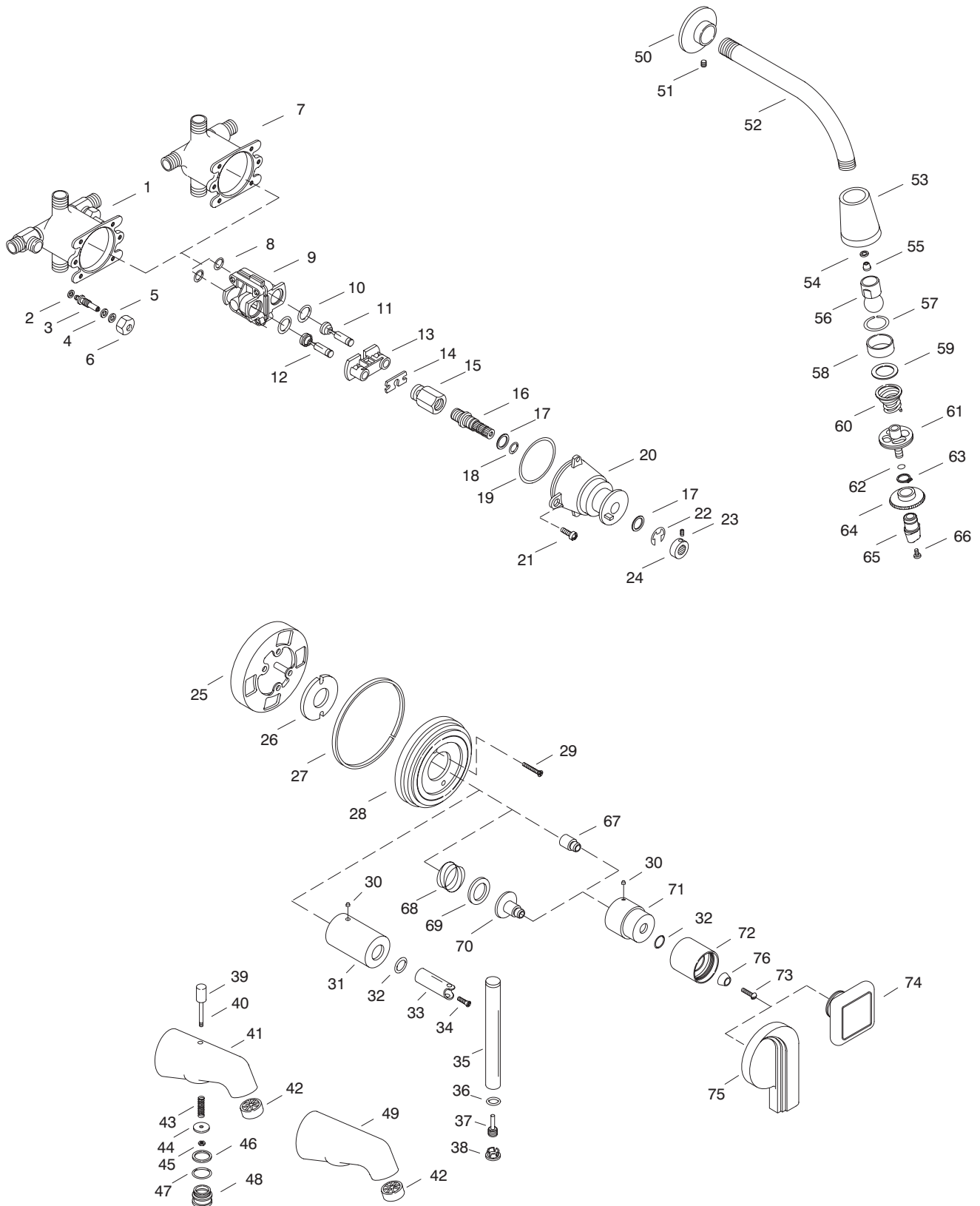


KOHLER[®] SERVICE PARTS

TABORET™ RITE-TEMP™
BATH AND SHOWER FAUCETS
K-8224-**-BA, K-8225-**-BA
K-8226-**-BA, K-8227-**-BA



Variation and/or finish/color code may be required when ordering.

SERVICE PARTS

ITEM	PART NO.	DESCRIPTION
1	71917	Body, w/Stops
2	20961	Washer,.185 x .505
3	40287	Stem, Stop
4	40291	Washer
5	40288	Packing
6	40289	Pack Nut
7	71916	Body, Pressure Balanced (w/o Stops)
8	52480	O-Ring
9	52464	Available in Service Kit Only
10	52479	O-Ring
11		Available in Service Kit Only
12		Available in Service Kit Only
13	52450	Retainer Plate
14	52454	Stem Bar
15	52455	Stem
16	52453	Spindle
17	52456	Washer
18	52457	O-Ring
19	52477	O-Ring
20	52451	Cap
21	21980	Screw, .250-20 UNC-2A x .500
22	50541	E-Ring
23	20925	Screw, .164-32 UNC-2A x .313
24	52452	Spindle Collar
25	52777	Plaster Guard
26		Available in Service Kit Only
27		Available in Service Kit Only
28		Available in Service Kit Only
29	22154	Screw, .190-24 UNC-2/a x 2,13
30	34453	Screw, .164-32 UNC-3A x.188
31	42672	Skirt, Shower Mixer
32	32657	O-Ring
33	42673	Stem, Handle
34	22859	Screw, .164-32 UNC-2A x .500
35	42674	Handle
36	51251	O-Ring
37	42675	Plug, Handle, Shower
38	42676	Plug Button
39	42688	Lift Knob, Threaded
40	54871	Rod, Lift
41	38777	Diverter Spout
42	38808	Bath Stream Breaker
43		Available in Service Kit Only
44		Available in Service Kit Only
45		Available in Service Kit Only
46		Available in Service Kit Only
47		Available in Service Kit Only
48		Available in Service Kit Only
49	38773	Bath Spout Body
50	22911	Flange For Shower Arm
51	32966	Screw, .164-32 UNC-2A x.188
52	24898	Shower Arm
53	29466	Shower Head Body
54		Available in Service Kit Only
55		Available in Service Kit Only
56		Available in Service Kit Only
57	52843	Split Washer
58	24981	Packing For Shower Head
59	29266	Washer, 57/64 x 1 11/64
60	24960	Spring For Shower Head
61	29506	Lock Ring Assembly
62	32698	O-Ring
63	29470	Retaining Ring
64	29467	Shower Head Face
65	29479	Thumb Nut, Shower Face
66	29476	Screw, .138-32 UNC-2A x .313
67	52528	Stem Extension, Rite Temp
68	42286	Spring
69	58219	Friction Washer
70	58218	Stem Extension
71	57341	Shower Mixer Skirt
72	57340	Large Bonnet

SERVICE PARTS

ITEM	PART NO.	DESCRIPTION
73	21634	Screw,.164-32 UNC-2A 1.06
74	57331	Square Handle
75	57334	Swirl Handle
76	57338	Handle Adapter

SERVICE KITS

PART NO.	ITEM	QTY.	DESCRIPTION
52466	7-24		Valve Assembly (w/o Stops)
76001	8-24		Cap Assembly/PBM
500520			Pressure Balancing Body
	8	1 ea.	O-Ring
	9	1 ea.	Body Assembly
	10	1 ea.	O-Ring
76002			Cap Subassembly
	11	1 ea.	Plunger, Hot
	12	1 ea.	Plunger, Cold
	13	1 ea.	Retainer Plate
	14	1 ea.	Stem Bar
	15	1 ea.	Stem
	16	1 ea.	Spindle
	17	1 ea.	Washer
	18	1 ea.	O-Ring
	19	1 ea.	O-Ring
	20	1 ea.	Cap
	22	1 ea.	E-Ring
	23	1 ea.	Screw, .164-32 UNC-2A x .313
	24	1 ea.	Splindle Collar
74895			Plunger Kit
	11	1 ea.	Plunger, Hot
	12	1 ea.	Plunger, Cold
	19	1 ea.	O-Ring
42711			Escutcheon Assembly
	26	1 ea.	Gasket
	27	1 ea.	Face Ring, Shower
	28	1 ea.	Escutcheon, Shower Mixer
58293			Hardware Kit
	34	1 ea.	Screw, .164-32 UN -2A x .500
	36	1 ea.	O-Ring
	37	1 ea.	Plug, Handle, Shower
43400			Bath Spout Assembly
	40	1 ea.	Rod, Lift
	41	1 ea.	Diverter Spout
	43	1 ea.	Spring
	44	1 ea.	Disc, Diverter
	45	1 ea.	Nut, 10-24 NC-2B
	46	1 ea.	Gasket
	47	1 ea.	O-Ring
	48	1 ea.	Cap for Diecast Diverter Spout
38772			Bath Spout Assembly
	42	1 ea.	Bath Stream Breaker
	49	1 ea.	Bath Spout Body
30147			Valve Service Kit
	43	1 ea.	Spring
	44	1 ea.	Disc, Diverter
	45	1 ea.	Nut, 10-24 NC-2B
	46	1 ea.	Gasket
	47	1 ea.	O-Ring
20350			Shower Arm Assembly
	50	1 ea.	Flange For Shower Arm
	51	1 ea.	Screw, .164-32 UNC-2A x.188
	52	1 ea.	Shower Arm
20376	54-67		Shower Head Assembly
52492			Ball Joint Assembly
	54	1 ea.	Retaining Ring
	55	1 ea.	Flo Et Insert, 2.4 GPM
	56	1 ea.	Joint
41150	63-65		Shower Face Subassembly
58294			Hardware Kit
	73	1 ea.	Screw,.164-32 UNC-2A 1.06
	76	1 ea.	Handle Adapter

Variation and/or finish/color code may be required when ordering.