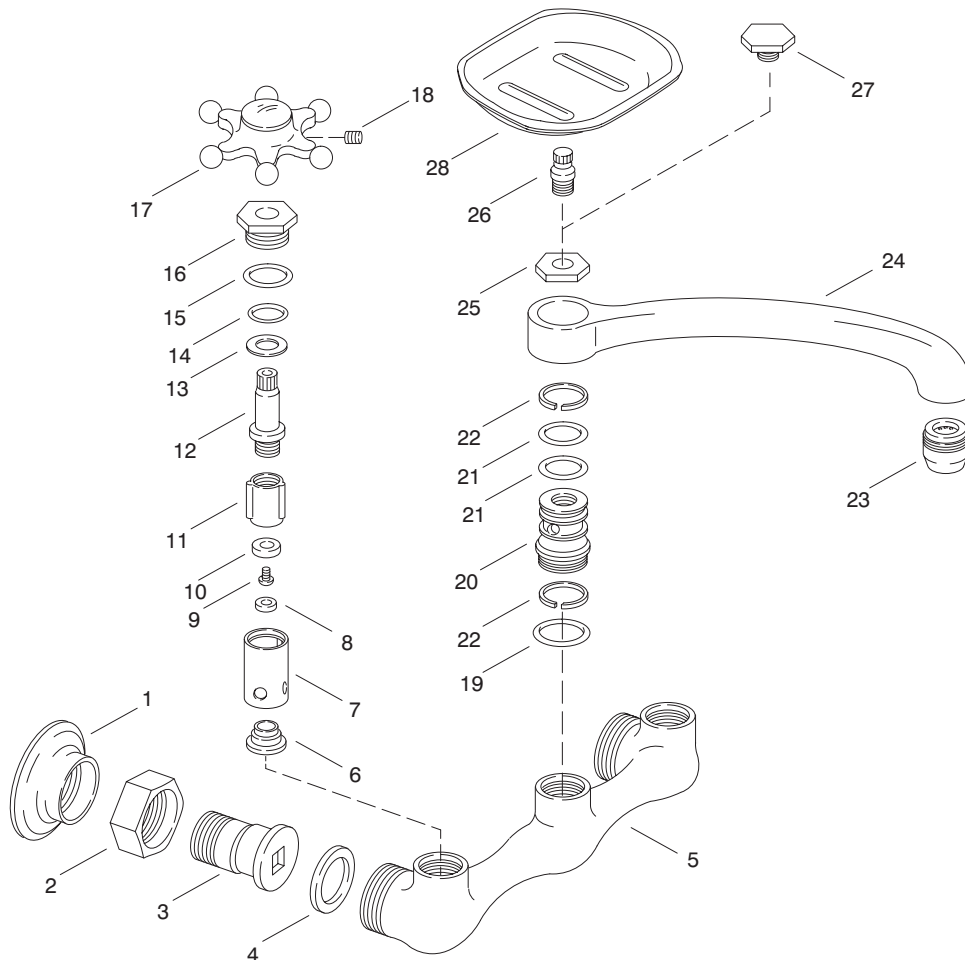


KOHLER[®] SERVICE PARTS

ANTIQUE™ WALL-MOUNT KITCHEN SINK FAUCET K-149-**-AA, K-155-**-AA, K-159-**-AA, K-165-**-AA



SERVICE PARTS

ITEM NO.	PART NO.	DESCRIPTION
1	39708	Flange for Comb Sink Fitting
2	40748	Nut, 1.312-16 UNS-2B
3	40599	Eccentric Shank, Female
	40598	Eccentric Shank, Male
4	40718-A	Washer, 7/8 ID x 1 7/3 OD
5	34512	Body
6	35119	Sleeve, Valve Seat
7	34842	Sleeve
8	29558	Gasket, .367 ID x .785 OD
9	34848	Screw .164-32 UNC-2A x .281
10	20961	Washer, .185 x .505
11	20314	Plunger
12	34320	Valve Stem
13	34265	Washer, .482 x .815
14	34263	O-Ring, 111
15	34264	O-Ring, 021
16	34365	Bonnet
17		Available in Service Kit Only
18	50283	Screw .190-24 UNC-3A x .125
19	32657	O-Ring, 114
20	36417	Swing Spout Post
21	40933	O-Ring
22	36415	Spout Bearing
23	41056	Aerator
24	38684	Sink Spout (8")
	38733	Swing Spout 12"
25	34533	Nut, .125-27 NPSM
26	34532	Post for Soap Dish
27	34312	Cap, Spout Post
28	37668	Soap Dish & Boss Assembly

SERVICE KITS

PART NO.	ITEM NO.	QTY.	DESCRIPTION
29851			Shank Assembly (Female)
	1	1 ea.	Flange for Comb Sink Fitting
	2	1 ea.	Supply Coupling Nut
	3	1 ea.	Eccentric Shank, Female
29856			Shank Assembly (Male)
	1	1 ea.	Flange for Comb Sink Fitting
	2	1 ea.	Supply Coupling Nut
	3	1 ea.	Eccentric Shank, Male
24822			Seat & Sleeve Assembly
	6	1 ea.	Sleeve, Valve Seat
	7	1 ea.	Sleeve
	9	1 ea.	Gasket, .367 ID x .785 OD
22950			Stem & Plunger Assembly
	8	1 ea.	Screw .164-32 UNC-2A x .281
	10	1 ea.	Washer, .185 x .505
	11	1 ea.	Plunger
	12	1 ea.	Valve Stem
	13	1 ea.	Washer, .482 x .815
	14	1 ea.	O-Ring, 111
50281			Handle Subassembly, 6 Prong Hot
	17	1 ea.	Handle, 6 Prong/Button, Hot
	18	1 ea.	Screw, .190-24 UNC-3A x .125
50282			Handle Subassembly, 6 Prong Cold
	17	1 ea.	Handle, 6 Prong/Button, Cold
	18	1 ea.	Screw, .190-24 UNC-3A x .125
37766			Soap Dish Post Nut Assembly
	25	1 ea.	Nut, .125-27 NPSM
	26	1 ea.	Post for Soap Dish

Variation and/or finish/color code may be required when ordering.