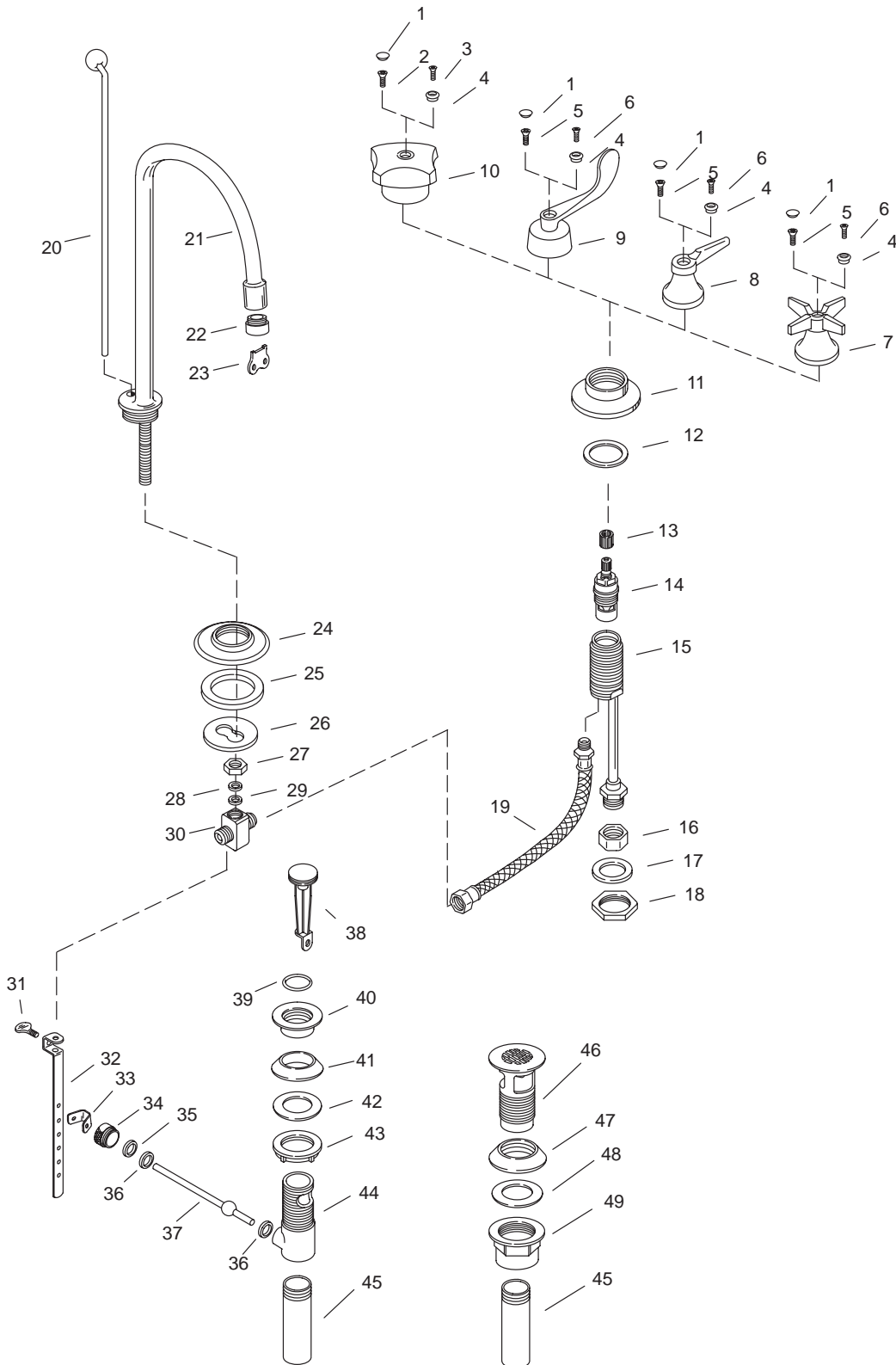


KOHLER[®] SERVICE PARTS

TRITON™ LAVATORY FAUCET
K-7435-**-**-BA
K-7467-**-**-BB



Variation and/or finish/color code may be required when ordering.

SERVICE PARTS

ITEM NO.	PART NO.	DESCRIPTION
1	52622	Button Cap
2	56074	Screw, .164-32 UNC x .31
3	58891-S	Screw, 8-32 x .51
4	52623-C	Button Cap, Blue
	52623-H	Button Cap, Red
	52623-A	Button Cap, Black
5	31490	Screw, .164-32 UNC-2A x .50
6	58892-S	Screw, 8-32 x .67
7	52640	4-Prong Handle & Bonnet Assembly
8	52637	Lever Handle, Large Bonnet Assembly
9	52926	Wristblade Handle Assembly
10	52644	Handle Assembly (Standard Handle)
11	40000	Escutcheon
12	34037	Gasket, 1-1/2 x 2-3/16
13	59027	Spline Adapter
14	30430	Ceramic Valve (Clockwise Close)
	30431	Ceramic Valve (Counterclockwise Close)
15		Available in Service Kit only
16	32751	Nut, .5-14 NPSM
17	40001	Washer, 1-9/32 ID x 1-3/4 OD
18	40005	Nut, 1.25-20 UNS-2B
19	40008	Hose, 1/4-18 NPT X 16-1/2
20	40156	Rod Assembly
21	37814	Gooseneck Spout
	50592	Gooseneck Spout (w/Pop-up Hole)
22	59620	Aerator, 2.0, 13/16 Male
	59721	Aerator, Streambreaker, 13/16 Male
	41781	Aerator, 1.5 GPM
	59722	V.R. Aerator, 2.0, 13/16 Male
	55403	V.R. Aerator, 1.5 GPM
	20344	V.R. Aerator, 13/16 Male, 0.5 GPM
23	21999	Wrench, VP
24	34304	Escutcheon
25	35715	Gasket
26	40015	Washer, Special
27	40014	Nut, .75-18 NPSM
28	40097	Washer, .281 ID x .460 OD
29	40013	Gasket, .250 ID X .460 OD
30	40098	Supply Tee
31	57422	Thumb Screw
32	73382	Link
33	40228	Spring Clip
34	57403	Retainer Nut
35	38745	Washer, .531 ID x .734 OD
36	38744	Washer, .484 ID x .748 OD
37	41312	Lever Assembly
38		Available in Service Kit only
39	38676	O-Ring, 024 x 1.114
40	57408	Flange
41	57966	Gasket
42	40238	Washer
43	40076	Locknut
44	57405	Drain Body
45	41640	Tailpiece, 4-1/4" Long
46	57248	Strainer Assembly
47	33507	Drain Gasket
48	34043	Washer, 1-17/32 x 2-1/8
49	20831	Nut, 1-1/2-16 UNS

SERVICE KITS

PART NO.	ITEM NO.	QTY.	DESCRIPTION
43169			Escutcheon Subassembly
	11	2 ea.	Escutcheon
	12	2 ea.	Gasket, 1-1/2 x 2-3/16
40409			End Valve Assembly, Hot (Clockwise Close)
	14	1 ea.	Ceramic Valve (Clockwise Close)
	15	1 ea.	End Valve Body Assembly
	16	1 ea.	Nut, .5-14 NPSM
40478			End Valve Assy, Cold (Counterclockwise Close)
	14	1 ea.	Ceramic Valve (Counterclockwise Close)
	15	1 ea.	End Valve Body Assembly
	16	1 ea.	Nut, .5-14 NPSM
40037			Nut & Washer Subassembly
	17	2 ea.	Washer, 1-9/32 ID x 1-3/4 OD
	18	2 ea.	Nut, 1.25-20 UNS-2B
40036			Tee, Nut & Washer Assembly
	26	1 ea.	Washer, Special
	27	1 ea.	Nut, .75-18 NPSM
	28	1 ea.	Washer, .281 ID x .460 OD
	29	1 ea.	Gasket, .250 ID X .460 OD
	30	1 ea.	Supply Tee
58156			Drain Hardware Assembly
	31	1 ea.	Thumb Screw
	32	1 ea.	Link
	33	1 ea.	Spring Clip
	34	1 ea.	Retainer Nut
	35	1 ea.	Washer, .531 ID x .734 OD
	36	2 ea.	Washer, .484 ID X .748 OD
	37	1 ea.	Lever Assembly
58154			Stopper Kit, Plastic
	38	1 ea.	Vandal Resistant Stopper
	39	1 ea.	O-Ring, 024 x 1.114
58152			Drain Assembly, Plastic
	38	1 ea.	Stopper Assembly, Plastic
	39	1 ea.	O-Ring, 024 x 1.114
	40	1 ea.	Flange
	41	1 ea.	Gasket
	42	1 ea.	Washer
	43	1 ea.	Locknut
	44	1 ea.	Drain Body
57427			Lav Drain Assembly
	46	1 ea.	Strainer Assembly
	47	1 ea.	Drain Gasket
	48	1 ea.	Washer, 1-17/32 x 2-1/8
	49	1 ea.	Nut, 1-1/2-16 UNS
56520			Gasket Kit
	47	1 ea.	Drain Gasket
	48	1 ea.	Washer, 1-17/32 x 2-1/8
	49	1 ea.	Nut, 1-1/2-16 UNS

Variation and/or finish/color code may be required when ordering.