

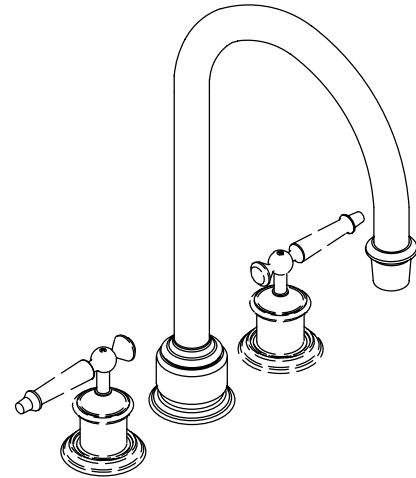
**FEATURES**

- Brass construction
- Deck-mount
- 9" Curio non-diverter spout with slip-fit connection
- Available with Curio six-prong or lever handles

**CODES/STANDARDS APPLICABLE**

Specified model meets or exceeds the following:




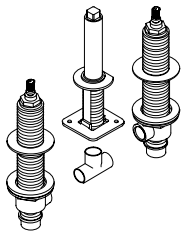
- ASME/ANSI A112.18.1M
- California Energy Commission
- Canadian Standards Association (CSA)
- Energy Policy Act of 1992
- IAPMO/UPC
- NSF 14



**COLORS/FINISHES**

- CP Polished Chrome
- PB Polished Brass

**SPECIFIED MODEL:** For complete faucet, both faucet trim and valve system must be specified.

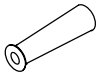
Model	Description		 ADA
K-T350-3D	With Curio Six-Prong Handles	<input type="checkbox"/> CP <input type="checkbox"/> PB	
K-T350-4D	With Curio Lever Handles		<input type="checkbox"/> CP <input type="checkbox"/> PB
<b>Required Accessories</b>			
K-17201	Trim Rings-Pair, Metal	<input type="checkbox"/> CP <input type="checkbox"/> PB	
K-301-K	3/4" High-Flow Valve System		<input type="checkbox"/> NA

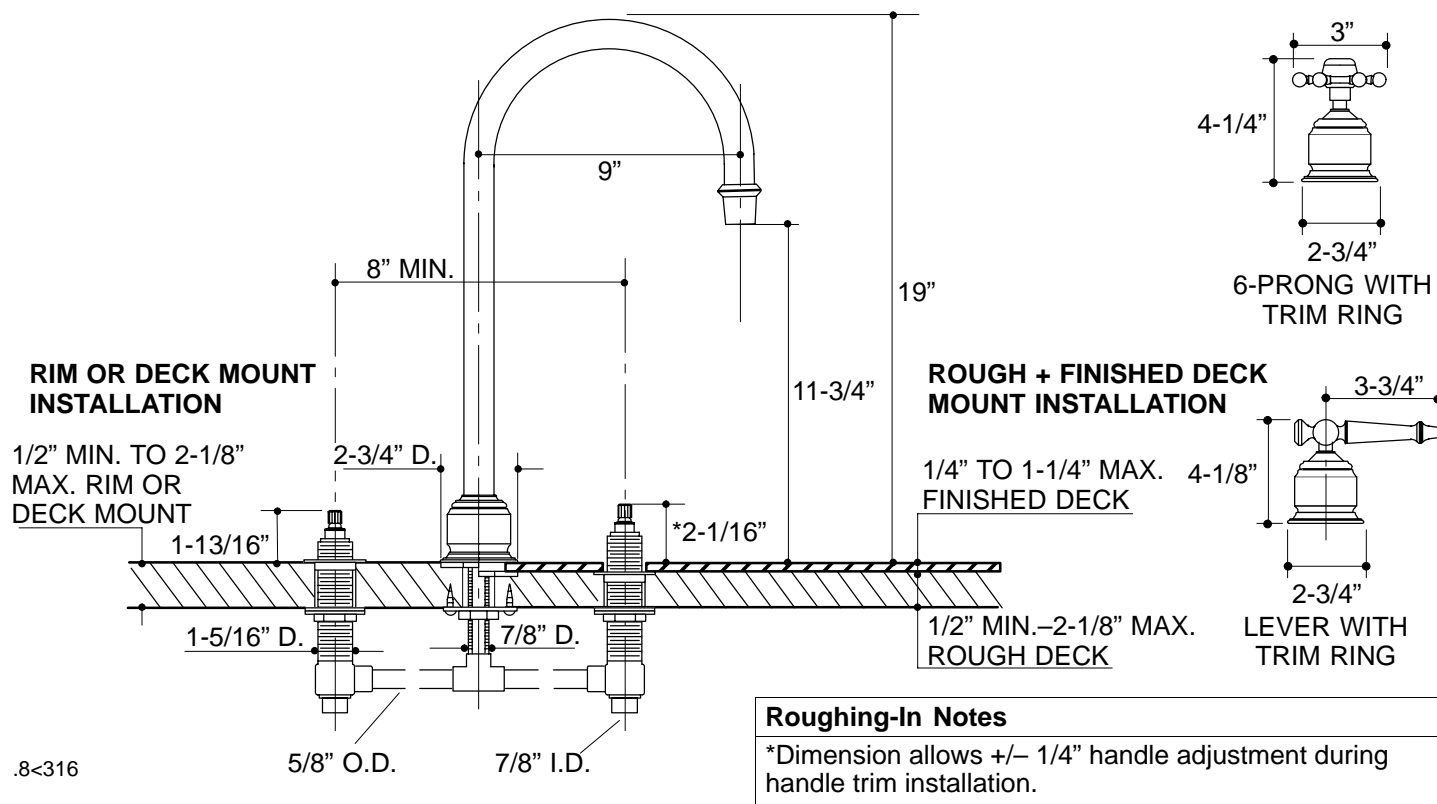
**Optional Accessories on Page 2.**

**PRODUCT SPECIFICATION:**

Two-handle deck-mount high-flow bath faucet trim shall be of brass construction. Product shall include 9" Curio non-diverter spout with slip-fit connection, and Curio six-prong or lever handles. Faucet trim shall be Kohler Model K-T350-\_\_\_\_\_-\_\_\_\_ and trim rings shall be Kohler Model K-17201-\_\_\_\_\_. Valve system shall be Kohler Model K-301-K-NA.

# ANTIQUE CURIO™

Optional Accessories		
K-9639	Large Lever Insert, Single	<input type="checkbox"/> CP <input type="checkbox"/> PB
K-9659	Large Lever Insert, Single	<input type="checkbox"/> Other _____



.8<316

## PRODUCT DIAGRAM