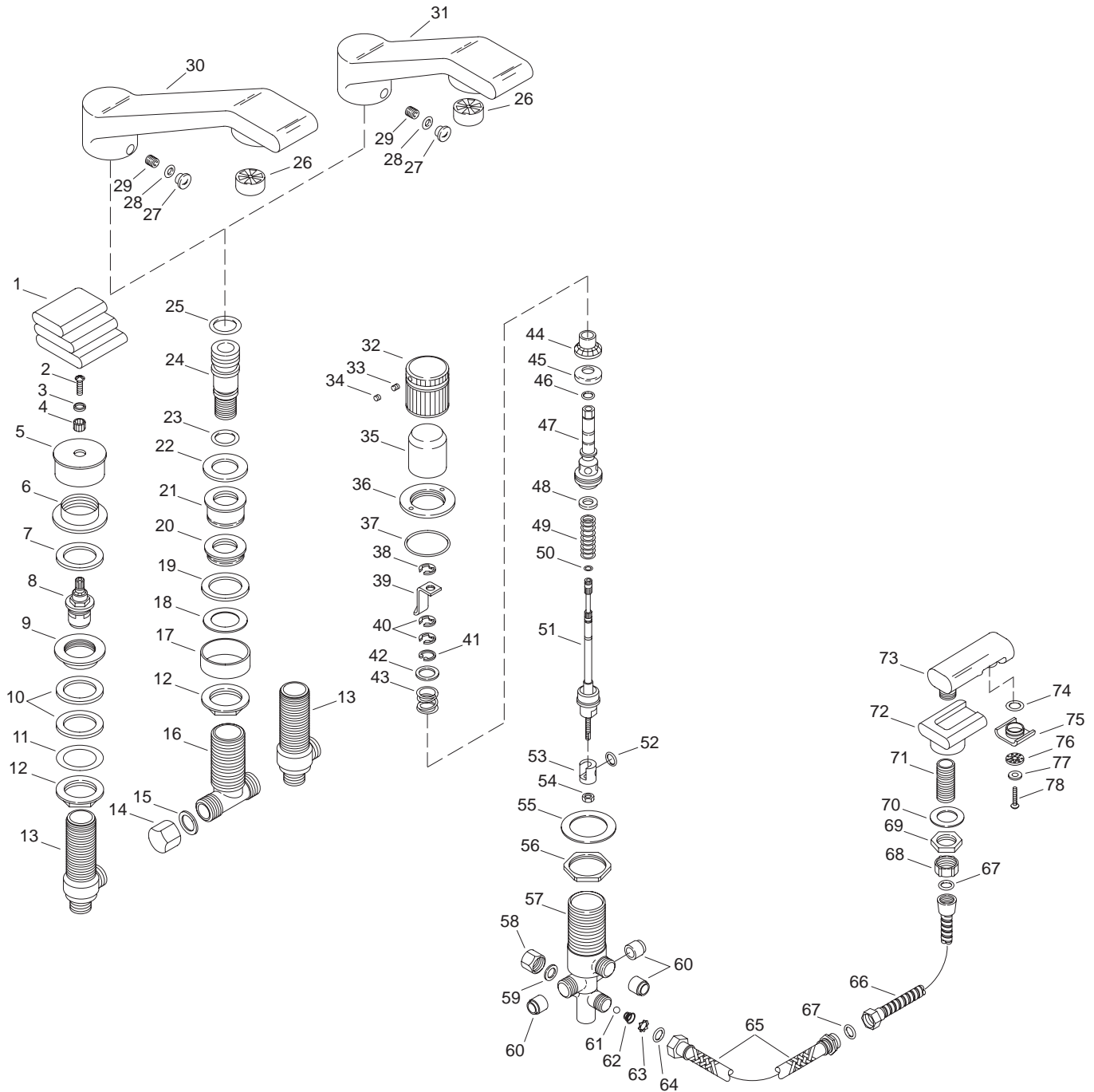


KOHLER[®] SERVICE PARTS

PILLOWS™ RIM/DECK MOUNT BATH FAUCETS W/BULLNOSE SPOUT K-7936-2-**-AA, K-7938-2-**-AA



Variation and/or finish/color code may be required when ordering.

SERVICE PARTS

| ITEM NO. | PART NO. | DESCRIPTION |
|----------|----------|-------------------------------|
| 1 | 58796 | Pillow Handle |
| 2 | 51677 | Screw, .164-32 UNC-2A x .380 |
| 3 | 35789 | Washer |
| 4 | 59027 | Spline Adapter |
| 5 | 51219 | Handle Base |
| 6 | 51316 | Escutcheon |
| 7 | 34037 | Gasket, 1-1/2 x 2-3/16 |
| 8 | 52869 | Valve, 3/4" Ceramic R.H. |
| | 52870 | Valve, 3/4" Ceramic L.H. |
| 9 | 58280 | Large Threaded Collar |
| 10 | 56446 | Washer, Rubber |
| 11 | 22352 | Washer |
| 12 | 58380 | Mounting Nut |
| 13 | 56841 | 3/4" Side Valve |
| 14 | 57318 | Pipe Cap, 3/4-14 NPSM |
| 15 | 22340 | Washer |
| 16 | 56782 | Tee |
| 17 | 58296 | Spacer |
| 18 | 58409 | Washer, Brass |
| 19 | 56446 | Washer, Rubber |
| 20 | 58279 | Small Threaded Collar (Short) |
| 21 | 58281 | Small Threaded Collar (Long) |
| 22 | 54530 | Washer |
| 23 | 71016 | O-Ring |
| 24 | 54536 | Supply Tube |
| 25 | 41391 | O-Ring |
| 26 | 38808 | Bath Stream Breaker |
| 27 | 21290 | Plug, Button |
| 28 | 32698 | O-Ring, 010 |
| 29 | 46112 | Screw, .313-18 UNC-3A x .31 |
| 30 | 43110 | Spout, Deck Mount |
| 31 | 56372 | Spout, Rim Mount |
| 32 | 52714 | Handle |
| 33 | 34453 | Screw, .164-32 UNC-3A x .188 |
| 34 | 52723 | Hole Plug |
| 35 | 52665 | Sleeve |
| 36 | 52666 | Flange |
| 37 | 48686 | O-Ring |
| 38 | 50593 | E-Ring |
| 39 | 50338 | Detent |
| 40 | 50541 | E-Ring |
| 41 | 54997 | Clip, Retaining |
| 42 | 54996 | Washer |
| 43 | 54995 | Spring |
| 44 | 55003 | Backing Ring, Diaphragm |
| 45 | 55004 | Diaphragm |
| 46 | 55110 | O-Ring, -.015 x .551 |
| 47 | 55006 | Valve Seat |
| 48 | 55413 | Washer |
| 49 | 54998 | Spring |
| 50 | 55109 | O-Ring, -.011 x .301 |
| 51 | 59239 | Stem Subassembly |
| 52 | 55108 | O-Ring, -.112 x .487 |
| 53 | 55001 | Spool |
| 54 | 57008 | Lock Nut, Hex Jam, 5/16 x 18 |
| 55 | 54994 | Washer |
| 56 | 55002 | Nut, 1.75-16 UNS-2B |
| 57 | 55007 | Valve Body |
| 58 | 52745 | Hex Cap |
| 59 | 40295 | Washer |
| 60 | 55766 | Reducer Bushing |
| 61 | 55439 | Ball, Check |
| 62 | 52886 | Spring, Conical |
| 63 | 57130 | Retaining Ring |
| 64 | 40295 | Washer |
| 65 | 52600 | High Pressure Hose |
| 66 | 21481 | Interlock Hose, 69" |
| 67 | 41163 | Washer |
| 68 | 52593 | Cap Nut, Plastic |
| 69 | 52595 | Nut, 1.187-20 UN-2B |
| 70 | 52596 | Washer, Brass |
| 71 | 52594 | Tube, Brass Threaded |
| 72 | 52100 | Holder, Base |
| 73 | 58911 | Hand Shower |

SERVICE PARTS

| ITEM NO. | PART NO. | DESCRIPTION |
|----------|----------|-------------------|
| 74 | 52517 | O-Ring |
| 75 | 52105 | Bezel |
| 76 | 58004 | Spray Ring, Large |
| 77 | 52108 | Spray Ring, Small |
| 78 | 52630 | Screw |

SERVICE KITS

| PART NO. | ITEM NO. | QTY. | DESCRIPTION |
|----------|----------|-------|----------------------------------|
| 50667 | | | Pillow Handle Assembly |
| | 1 | 1 ea. | Pillow Handle |
| | 2 | 1 ea. | Screw, .164-32 UNC-2A x .380 |
| | 3 | 1 ea. | Washer |
| 40353 | | | Spline Adapter Assembly |
| | 4 | 2 ea. | Spline Adapter |
| 73361 | | | Handle Kit, Pillows |
| 50667 | | 2 ea. | Pillow Handle Assembly |
| 40353 | | 1 ea. | Spline Adapter Assembly |
| | 6 | 2 ea. | Escutcheon |
| | 7 | 2 ea. | Gasket, 1-1/2 x 2-3/16 |
| 57381 | | | Diverter Subassembly |
| 54992 | | 1 ea. | Stem And Spool Subassembly |
| 54993 | | 1 ea. | Valve Seat Subassembly |
| | 38 | 1 ea. | E-Ring |
| | 39 | 1 ea. | Detent |
| | 40 | 2 ea. | E-Ring |
| 54993 | | | Valve Seat Subassembly |
| | 41 | 1 ea. | Clip, Retaining |
| | 42 | 1 ea. | Washer |
| | 43 | 1 ea. | Spring |
| | 44 | 1 ea. | Backing Ring, Diaphragm |
| | 45 | 1 ea. | Diaphragm |
| | 46 | 1 ea. | O-Ring, -.015 x .551 |
| | 47 | 1 ea. | Valve Seat |
| 57386 | | | O-Ring And Diaphragm Kit |
| | 44 | 1 ea. | Backing Ring, Diaphragm |
| | 45 | 1 ea. | Diaphragm |
| | 50 | 1 ea. | O-Ring, -.011 x .301 |
| | 52 | 1 ea. | O-Ring, .112 x .487 |
| 54992 | | | Stem And Spool Subassembly |
| | 48 | 1 ea. | Washer |
| | 49 | 1 ea. | Spring |
| | 50 | 1 ea. | O-Ring, -.011 x .301 |
| | 51 | 1 ea. | Stem Subassembly |
| | 53 | 1 ea. | Spool |
| | 56 | 1 ea. | Nut, 1.75-16 UNS-2B |
| 54991 | | | Diverter Valve Assembly, 3-Way |
| 57381 | | 1 ea. | Diverter Subassembly |
| | 55 | 1 ea. | Washer |
| | 56 | 1 ea. | Nut, 1.75-16 UNS-2B |
| | 57 | 1 ea. | Valve Body |
| | 61 | 1 ea. | Ball, Check |
| | 62 | 1 ea. | Spring, Conical |
| | 63 | 1 ea. | Retaining Ring |
| 52599 | | | Hardware Assembly, Base Mounting |
| | 68 | 1 ea. | Cap Nut, Plastic |
| | 69 | 1 ea. | Nut, 1.187-20 UN-2B |
| | 70 | 1 ea. | Washer, Brass |
| | 71 | 1 ea. | Tube, Brass Threaded |

Variation and/or finish/color code may be required when ordering.