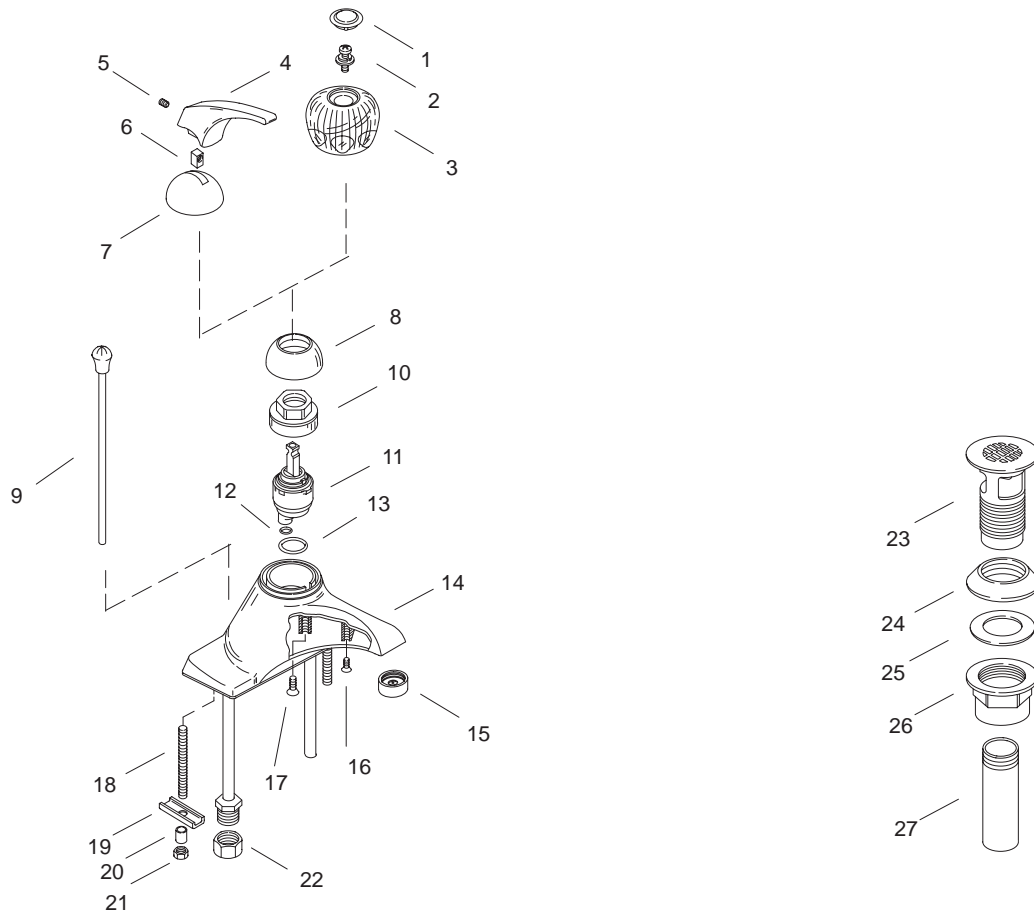


# KOHLER® SERVICE PARTS

## CORALAIS™ LAVATORY FAUCETS K-15191-\*\*-BA, K-15192-\*\*-BA, K-15198-\*\*-BB, K-15199-\*\*-BA



### SERVICE PARTS

ITEM	PART NO.	DESCRIPTION
1	71521	Plug Button
2	71508	Screw
3	71520	Handle
4	71535	Handle, Lever
5	71617	Screw, .250-28 UNF-2A x .375
6	71609	Insert, Lever Handle
7	71652	Cap (Chrome)
	71665	Cap (Polished Brass and Colors)
8	71524	Cap
	71559	Cap (Colors)
9	70341	Lift Rod (chrome)
	70342	Lift Rod (Polished Brass and colors)
10	71509	Bonnet
11	71500	Valve Unit Subassembly
12	33993	O-Ring, 011
13	71015	O-Ring
14		Not Available as a Service Part
15	59619	Aerator, 2.0, 55/64 Female
16	71552	Screw, .138-32 UNC x .31
17	71018	Screw, .190-24 UNC x .375
18	42345	Attachment Stud
19	71651	Channel
20	42344	Spacer
21	23094	Nut, .25-20 UNC-2B
22	32751	Nut, .5-14 NPSM
23	57248	Strainer Assembly

### SERVICE PARTS

ITEM	PART NO.	DESCRIPTION
24	33507	Drain Gasket
25	34043	Washer, 1-7/32 X 2-1/8
26	20831	Nut, 1-1/2-16 UNS
27	41640	Tailpiece, 4-1/4" Long

### SERVICE KITS

PART NO.	ITEM	QTY.	DESCRIPTION
30416			Knob Handle Kit
	1	1 ea.	Plug Button
	2	1 ea.	Screw
	3	1 ea.	Handle
30414			Lever Handle Kit
	4	1 ea.	Handle, Lever
	5	1 ea.	Screw, 250-28 UNF-2A x .375
	6	1 ea.	Insert, Lever Handle
71541			O-Ring Kit
	12	1 ea.	O-Ring, 011
	13	1 ea.	O-Ring
71507			Mounting Assembly
	19	1 ea.	Channel
	20	1 ea.	Spacer
	21	1 ea.	Nut, .25-20 UNC-2B

Variation and/or finish/color code may be required when ordering.