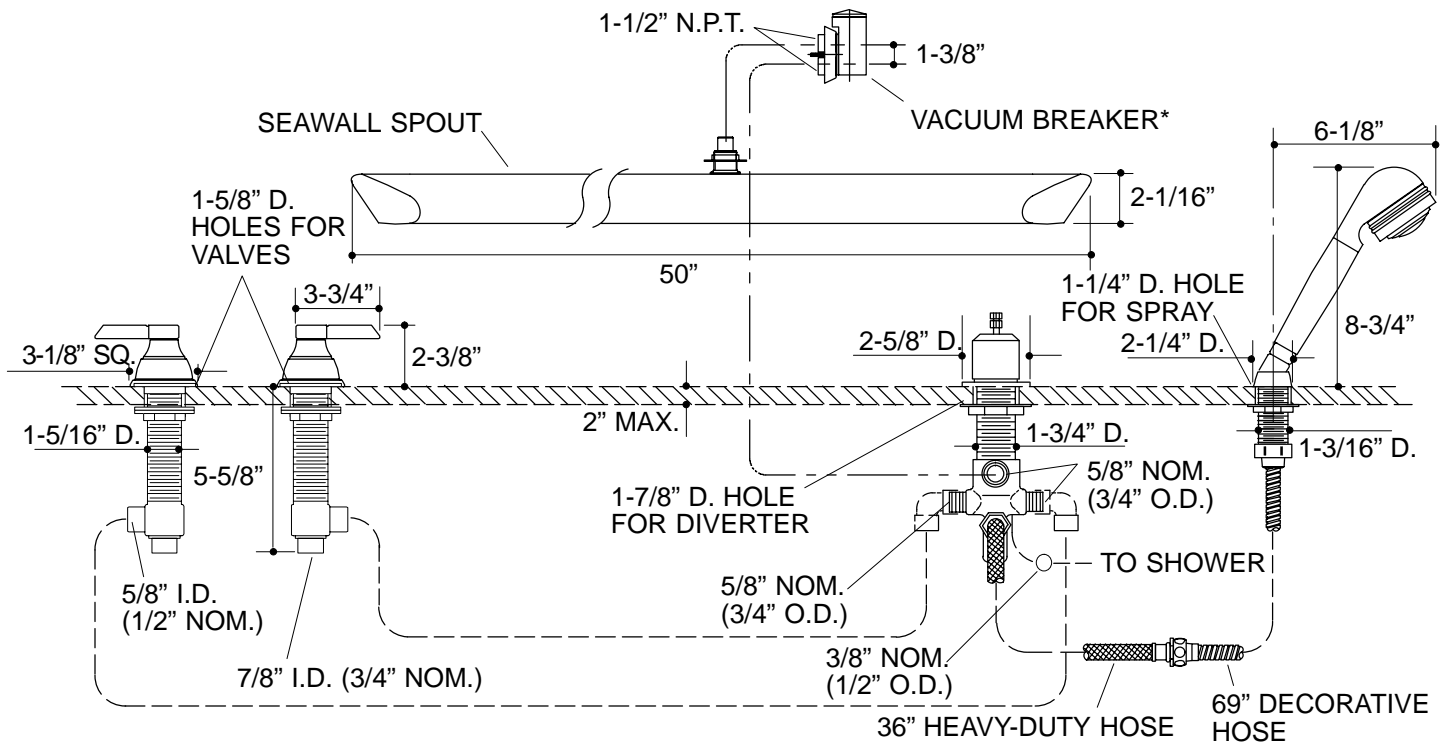


**Ordering Information**

Applicable faucet:	
Multi-piece*	K-6435-4B
Accessories/hardware:	
Decorative inserts	K-17212
*Requires decorative inserts.	
<b>ADA</b> Lever handles are ADA compliant	



18 \*CONSULT LOCAL PLUMBING CODES FOR VACUUM BREAKER HEIGHT

**K-6435-4B** Neuville™ Seawall Bath Faucet  
114652-1-AA (9619)

**NOTES:**