

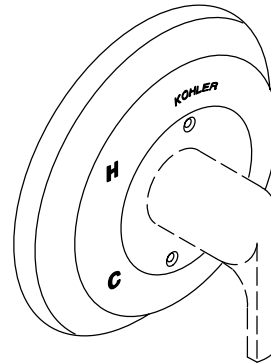
**FEATURES**

- Metal construction
- Available with lever or sculptured acrylic handle

**CODES/STANDARDS APPLICABLE**

Specified model meets or exceeds the following:



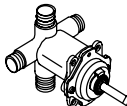
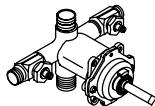
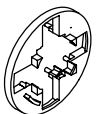
- ASME/ANSI A112.18.1M
- CSA B125
- IAPMO/UPC



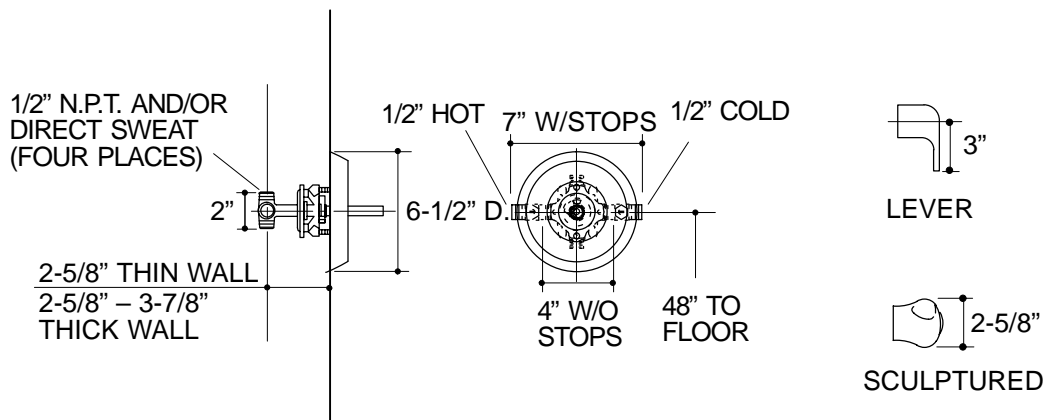
**COLORS/FINISHES**

- CP Polished Chrome
- PB Polished Brass

**SPECIFIED MODEL:** For complete faucet, both faucet trim and mixing valve must be specified.

Model	Description		
K-T15121-4	With Lever Handle	<input type="checkbox"/> CP <input type="checkbox"/> PB	
K-T15121-7	With Sculptured Acrylic Handle		<input type="checkbox"/> CP <input type="checkbox"/> PB
Required Accessory			
K-15700-K	Coralais Non-Pressure Balancing Mixing Valve, Less Stops	<input type="checkbox"/> NA	
K-15700-KS	Coralais Non-Pressure Balancing Mixing Valve, With Stops		<input type="checkbox"/> NA
Optional Accessory			
K-15145	Fiberglass Installation Plate	<input type="checkbox"/> NA	

**PRODUCT SPECIFICATION:**  
 Non-pressure balancing single-control valve trim shall be of metal construction. Product shall include faceplate with lever or sculptured acrylic handle. Valve trim shall be Kohler Model K-T15121-\_\_\_\_-\_\_\_\_ and mixing valve shall be Kohler Model K-15700-\_\_\_\_-NA.



332

## PRODUCT DIAGRAM