

VALVE TRIM
K-P15121
PROJECT PACK
ALSO K-P15700-K

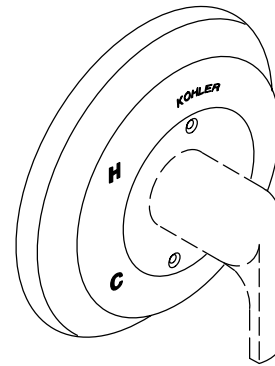
FEATURES

- Metal construction
- Available with lever or sculptured acrylic handle
- Packaged 12 per case

CODES/STANDARDS APPLICABLE

Specified model meets or exceeds the following:



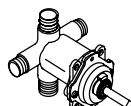
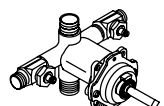
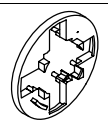
- ASME/ANSI A112.18.1M
- CSA B125
- IAPMO/UPC



COLORS/FINISHES

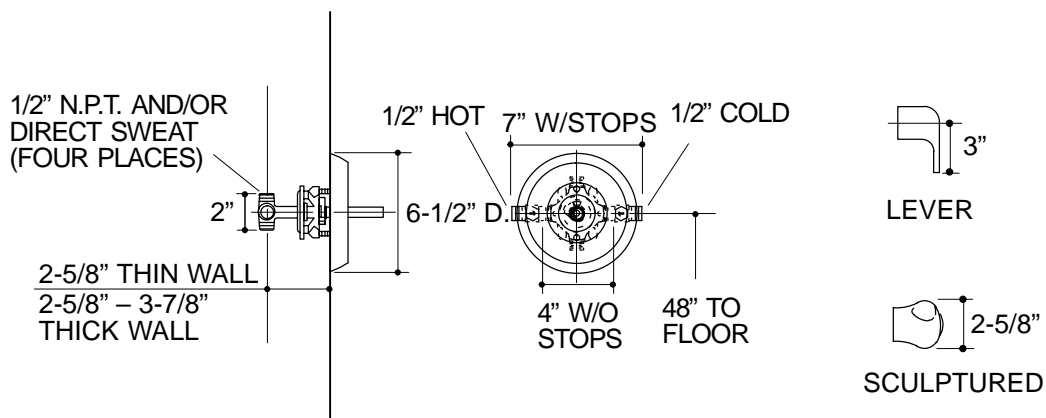
- CP Polished Chrome

SPECIFIED MODEL: For complete faucet, both faucet trim and mixing valve must be specified.

| Model | Description |  ADA |  |
|--------------------|--|---|---|
| K-P15121-4 | With Lever Handle | <input type="checkbox"/> CP | |
| K-P15121-7 | With Sculptured Acrylic Handle | | <input type="checkbox"/> CP |
| Required Accessory | |  |  |
| K-P15700-K | Coralais Non-Pressure Balancing Mixing Valve, Less Stops | <input type="checkbox"/> NA | |
| K-P15700-KS | Coralais Non-Pressure Balancing Mixing Valve, With Stops | | <input type="checkbox"/> NA |
| Optional Accessory | |  | |
| K-15145 | Fiberglass Installation Plate | <input type="checkbox"/> NA | |

PRODUCT SPECIFICATION:

Non-pressure balancing single-control valve trim shall be of metal construction. Product shall include faceplate with lever or sculptured acrylic handle. Valve trim shall be Kohler Model K-P15121-____-CP and mixing valve shall be Kohler Model K-P15700-____-NA. Project pack valves and trim are packaged twelve per case.



332

PRODUCT DIAGRAM