

P-TRAP/NIPPLE AND FLANGE
K-9009
ALSO K-9016

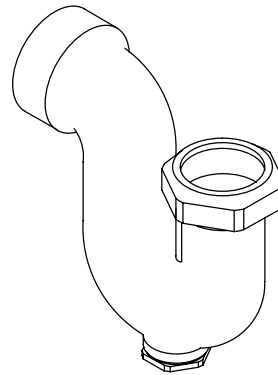
FEATURES

- Cast brass construction
- P-trap with slip-fit inlet, N.P.T. outlet, and cleanout plug
- 6" nipple with N.P.T. connections on both ends and flange

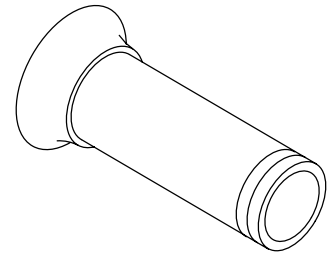
CODES/STANDARDS APPLICABLE

Specified model meets or exceeds the following:

- ASME/ANSI A112.18.1M
- IAPMO/UPC (K-9009)



K-9009



K-9016

COLORS/FINISHES

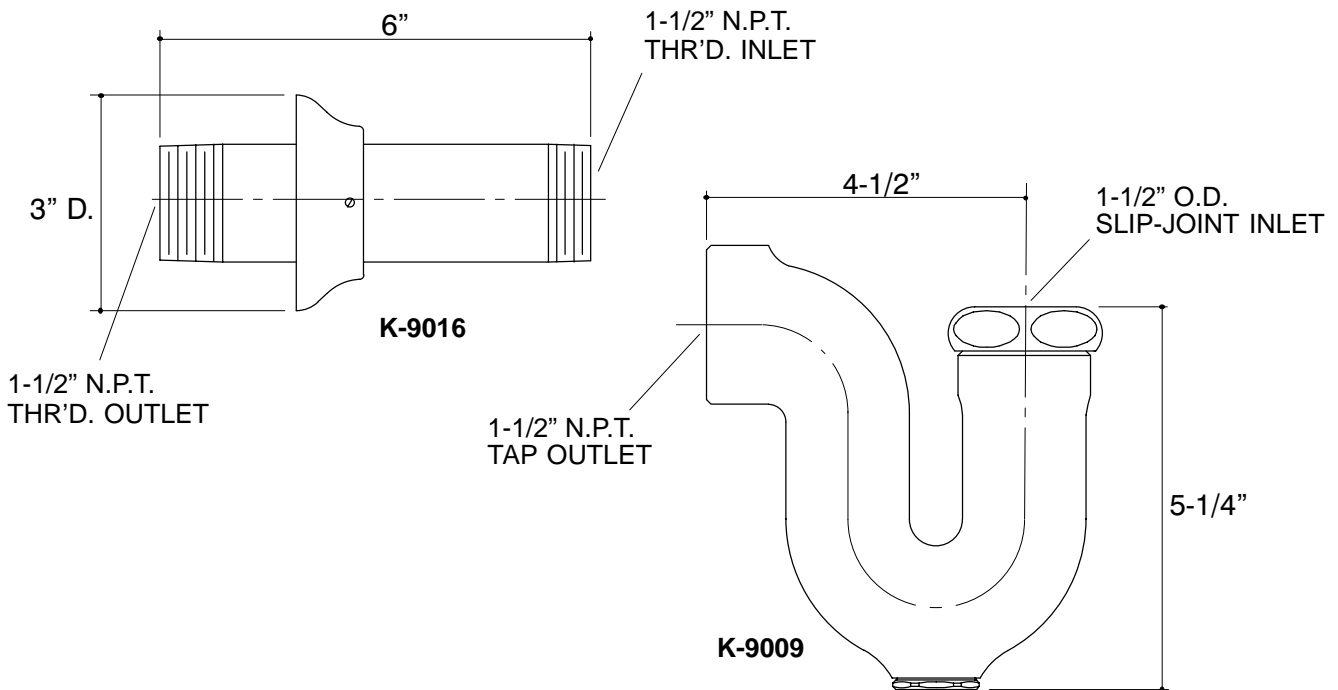
- CP Polished Chrome
- Other Refer to Faucets Price Book for additional finishes

SPECIFIED MODEL:

Model	Description		
K-9009	P-Trap	<input type="checkbox"/> CP	
K-9016	Nipple and Flange	<input type="checkbox"/> CP	<input type="checkbox"/> Other _____

PRODUCT SPECIFICATION:

Product shall be of cast brass construction. P-trap shall feature slip-fit inlet, N.P.T. outlet, and cleanout plug. 6" Nipple shall feature N.P.T. connections on both ends and shall include flange. P-trap shall be Kohler Model K-9009-CP. Nipple and Flange shall be K-9016-CP.



38

PRODUCT DIAGRAM