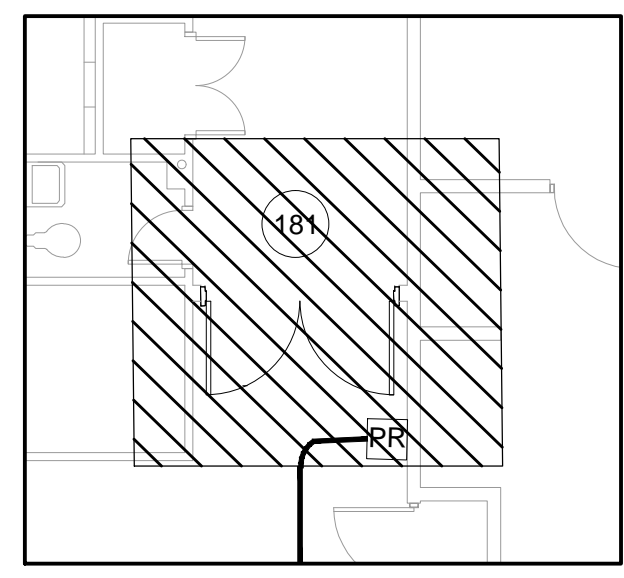
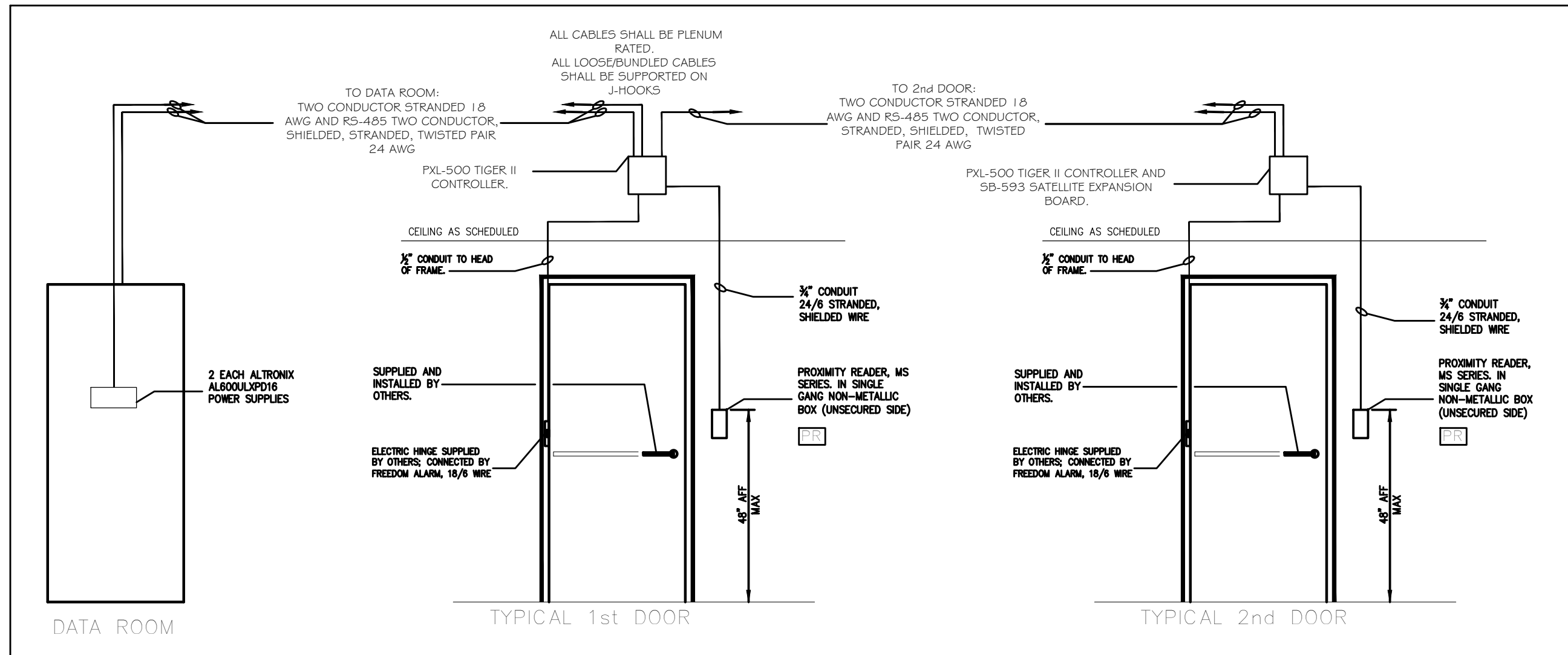
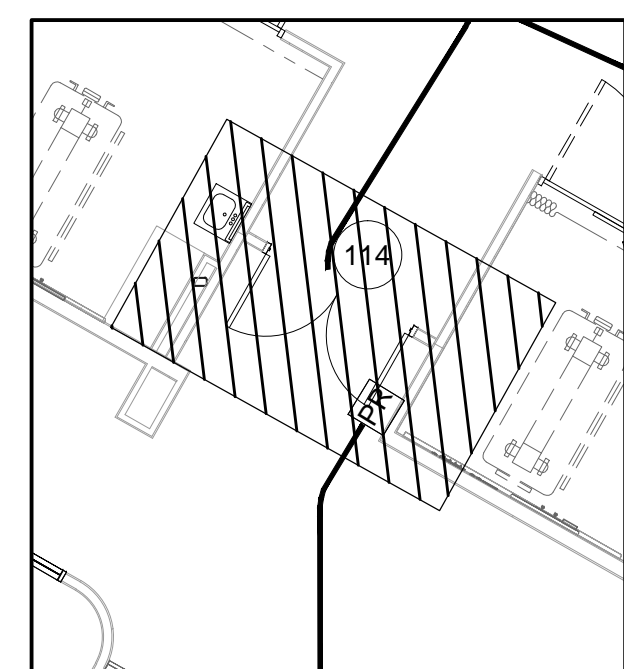


ACCESS CONTROL SYMBOL LEGEND

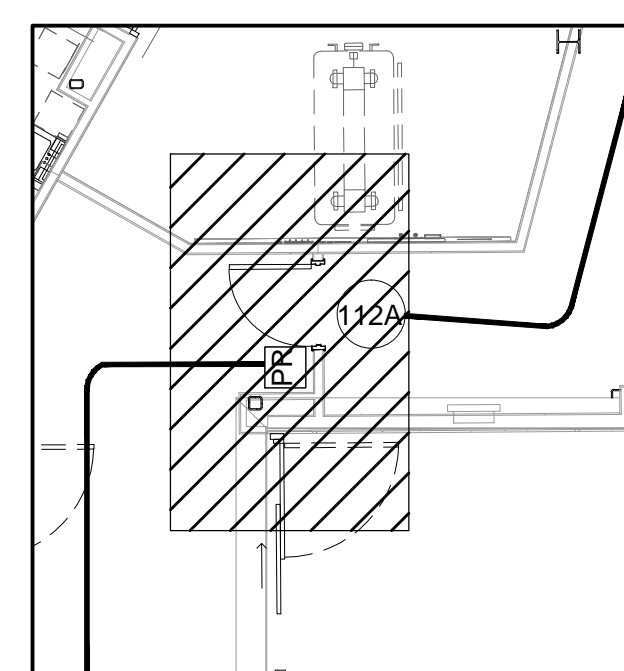
	= DOOR NUMBER
	= MS-5000 PROXIMITY READER



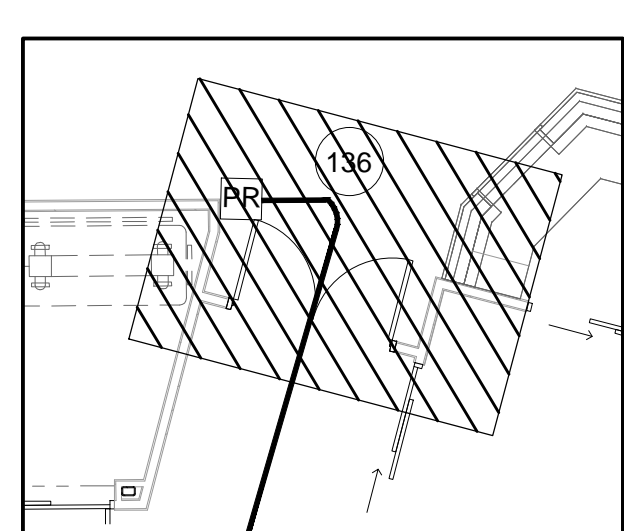
DETAIL #1 DOOR 181
N.T.S.



DETAIL #2 DOOR 114
N.T.S.



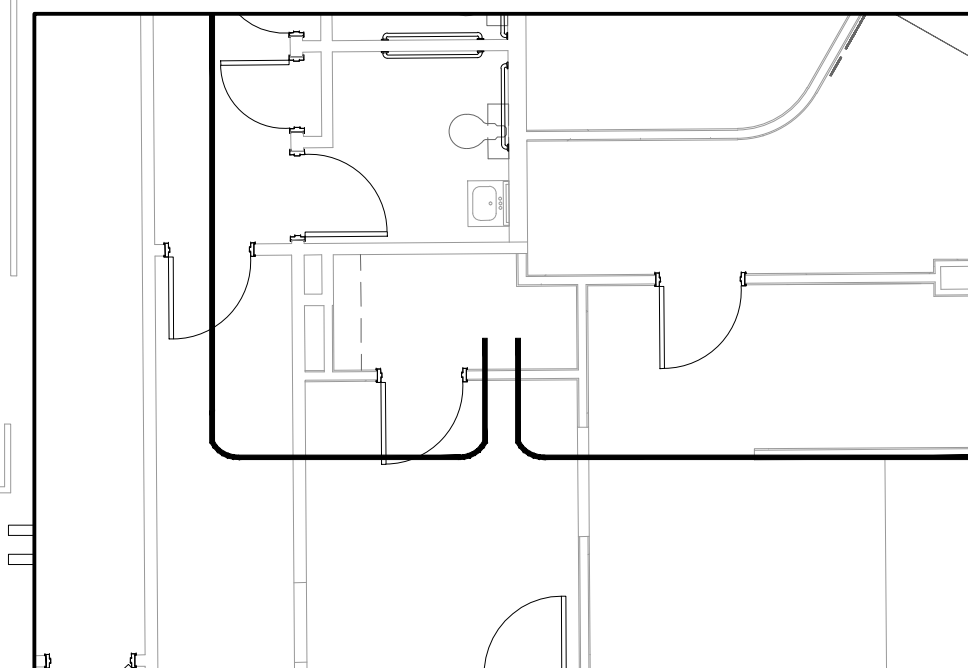
DETAIL #3 DOOR 112A
N.T.S.



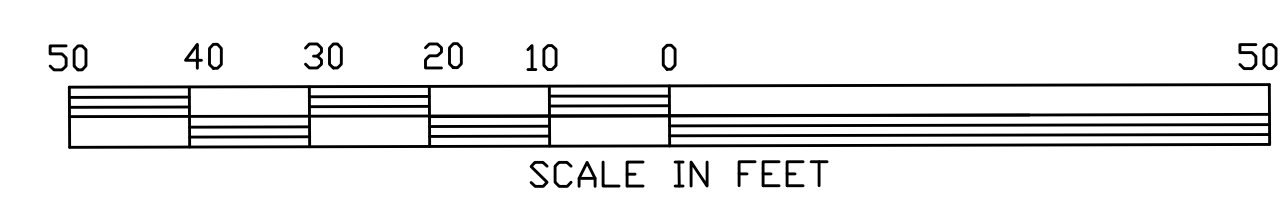
DETAIL #4 DOOR 136
N.T.S.



DETAIL #5 DOOR 112B
N.T.S.



DETAIL #6 ACCESS CONTROL ROOM
N.T.S.



ADDITIONAL ACCESS CONTROL SITE PLAN
1/16" = 1'

LSU BOGALUSA MEDICAL CENTER
SECURITY ACCESS CONTROL
499 PLAZA STREET
BOGALUSA, LA 70427

REVISIONS	DATE

FREEDOM ALARM
P.O. BOX 399
ABITA SPRINGS
(985) 809-9639

SHEET No: 01 OF 0

SEC-1

DAMMON ENGINEERING, INC.
Architects & Engineers

CHIEF ENGINEER: BRIAN MITCH, P.E.
CHIEF ARCHITECT: KEVIN KINCHEN
954 OLD SPANISH TRAIL
DAMMONENGINEERING.COM
dammoneng@bellsouth.net
PHONE: 905-644-9532

THIS DOCUMENT IS THE PROPERTY OF DAMMON ENGINEERING, INC. AND IS TO BE USED ONLY FOR THE PROJECT AND SITE SPECIFICALLY IDENTIFIED HEREIN. IT IS NOT TO BE REPRODUCED, COPIED, OR TRANSMITTED IN ANY FORM OR BY ANY MEANS, ELECTRONIC OR MECHANICAL, INCLUDING PHOTOCOPYING, RECORDING, OR BY ANY INFORMATION STORAGE AND RETRIEVAL SYSTEM, WITHOUT THE WRITTEN PERMISSION OF DAMMON ENGINEERING, INC. PROJECTS ARE THE PROPERTY OF DAMMON ENGINEERING, INC. AND ARE NOT TO BE REPRODUCED OR TRANSMITTED IN ANY FORM OR BY ANY MEANS, ELECTRONIC OR MECHANICAL, INCLUDING PHOTOCOPYING, RECORDING, OR BY ANY INFORMATION STORAGE AND RETRIEVAL SYSTEM, WITHOUT THE WRITTEN PERMISSION OF DAMMON ENGINEERING, INC.

JOB No: 2206 DATE: 01-01-2013
DRAWN BY: DPN CHECKED BY: WH