



SS SIGN SCHEDULE

- A** CHANNEL LETTERS | QTY. (1)
- B** DOOR VINYL | QTY. (1)
- C** MONUMENT SIGN | QTY. (2)

GENERAL NOTES

- INSTALLER SHALL VERIFY WALL CONDITIONS IN THE FIELD
- TYPE, SIZE & QUANTITY OF FASTENERS TO BE DETERMINED
- ALL BOLT HOLES TO BE DRILLED OR PUNCHED
- ISOLATE ALL ALUMINUM FROM STEEL

NEW & REMODEL CONSTRUCTION

ADEQUATE BEHIND THE WALL BACKING AND ACCESS IS REQUIRED FOR THE INSTALLATION OF NEW SIGNAGE. CUSTOMER TO FORWARD APPROVED SIGNAGE DRAWINGS TO THE ON SITE CONTACT TO INSURE THAT THE REQUIRED PROVISIONS ARE MADE DURING CONSTRUCTION, PRIOR TO THE SIGN INSTALLATION.

INSTALLER REQUIREMENTS FOR EIFS WALLS
IT IS THE RESPONSIBILITY OF THE INSTALLATION CONTRACTOR TO PROVIDE ANY WALL SPACERS REQUIRED TO KEEP EIFS WALL MATERIAL FROM BEING COMPACTED DURING INSTALLATION OF ANY MOUNTING BOLTS REQUIRED FOR SIGNAGE.

INSTALLER REQUIREMENTS

ALL INSTALLATION (MOUNTING) HARDWARE AND SECONDARY WIRING COMPONENTS, CONDUIT & CONNECTORS, ETC ARE TO BE PROVIDED BY THE INSTALLATION CONTRACTOR.

ALL WALL PENETRATIONS TO BE SEALED WITH SILICONE TO HELP PREVENT MOISTURE PENETRATION @ EXTERIOR LOCATIONS.

ANY DEVIATION FROM VISION SIGN GROUP REQUIREMENTS MAY RESULT IN DAMAGE TO OR IMPROPER OPERATION OF SIGNAGE, CAUSING DELAYS AND ADDITIONAL COSTS.

CUSTOMER TO PROVIDE DEDICATED BRANCH CIRCUITS FOR SIGNS ONLY PER NEC CODE 600.5

ALL BRANCH CIRCUITS FOR SIGNS MUST BE TOTALLY DEDICATED TO SIGNS (INCLUDING DEDICATED GROUND & NEUTRAL PER CIRCUIT AND SHALL NOT BE SHARED WITH OTHER LOADS (SUCH AS LIGHTING, A/C AND OTHER EQUIPMENT). PROPERLY SIZED GROUND WIRE THAT CAN BE TRACED BACK TO THE BREAKER PANELS REQUIRED.

NUMBER AND SIZE OF CIRCUITS FOR EACH SIGN MUST MEET VISION SIGN GROUP REQUIREMENTS.

ALL ELECTRICAL SIGNS SHALL CONFORM TO THE REQUIREMENTS OF ARTICLE 600 OF THE N.E.C. AND U.L. 48 ALONG WITH OTHER APPLICABLE STATE & LOCAL CODE REQUIREMENTS. THIS INCLUDES PROPER GROUNDING AND BONDING OF THE SIGN

120V - 20 AMP (PRIMARY ELECTRICAL SERVICE) CIRCUITS AND FINAL CONNECTION TO EACH SIGN, TO WITHIN 6 FT TO BE BY THE CUSTOMER'S CERTIFIED ELECTRICIAN. NUMBER AND SIZE OF CIRCUITS FOR EACH SIGN TO MEET VISION SIGN GROUP REQUIREMENTS.

WARRANTY NOTICE

CERTAIN ELECTRICAL COMPONENTS OF SIGNS WILL FAIL PREMATURELY IF NOT SHUT OFF FOR A PERIOD OF TIME, ONCE EACH DAY FOR BEST PERFORMANCE WE RECOMMEND THAT SIGNS BE CONNECTED TO AN AUTOMATIC CONTROLLING DEVICE SUCH AS AN EMERGENCY MANAGEMENT SYSTEM, TIME CLOCK OR PHOTO CELL TO CONTROL THE DAILY SHUT-OFF PERIOD. FAILURE TO FOLLOW THESE RECOMMENDATIONS CAN CAUSE DAMAGE TO ELECTRICAL COMPONENTS OF THE SIGN AND VOID THE WARRANTY. SOME DIMMING DEVICES WILL ADVERSELY AFFECT THE ELECTRICAL COMPONENTS OF THE SIGN IT IS ATTACHED TO, CAUSING FAILURE. ANY DIMMING OF THE SIGN WITHOUT CONSULTATION WITH VISION SIGN GROUP WILL VOID THE WARRANTY.



VISION SIGN GROUP

Your Vision | Your Brand | Our Commitment

Corporate HQ:
358 E Grafton Rd Farimont, WV 26554
Office: 304.366.3021
www.visiongroup.com

This artwork is an original design solely for the purpose of presentation. Artwork shown in this document is owned by Vision Sign Group, a division of Vision Custom Signs LLC. No reproductions, unauthorized use or reproductions of any kind can be made without written consent from Vision Sign Group, a division of Vision Custom Signs LLC. Customer signature for approval indicates that all sizes, colors, spelling and specifications are accurate as represented and customer accepts all liability and cost involved if any of the information in this document becomes incorrect or invalid. Once signed, this document is legally binding in conjunction with any estimate and/or proposal presented for costs involved with the project illustrated on this design element. Any changes required or requested must be presented to Vision Sign Group and agreed upon by all parties to include any cost associated. Changes made after the design element has been approved may result in additional cost to client. Client agrees to pay any change order costs associated with modifications requested and/or made by client after approval has been granted.

Client Approval:



Date: _____

PLEASE CHECK ALL SPELLING, QUANTITIES, COLORS, AND MATERIALS BEFORE APPROVING

Revisions:

- #1 - Added option / DR / 10-03-23
- #2 - Revised / DA / 10-05-23
- #3 - Pylon sign / DA / 10-17-23

Color & Materials:

Project No: 4964

Date: 08/17/2023

Heartland Vet Partners
Description: Destrehan, LA

Sheet No: S001



EXISTING
SCALE - NTS

A FACE-LIT CHANNEL LETTERS
QTY: (1) 65.11 SQ FT

SCOPE OF WORK:

QTY: (1) SET OF FACE-LIT CHANNEL LETTERS
FLUSH MOUNTED

B DOOR VINYL
QTY: (1) 5.88 SQ FT

SCOPE OF WORK:

QTY: (1) SET OF 1ST SURFACE DOOR VINYL

C WINDOW VINYL
QTY: (1) 34.75 SQ FT

SCOPE OF WORK:

QTY: (1) SET OF 1ST SURFACE WINDOW VINYL

Heartland Veterinary Partners
(Destrehan Animal Hospital)
13524 River Road
Destrehan, LA 70047

Project: 4964



**VISION
SIGN GROUP**

Your Vision | Your Brand | Our Commitment

Corporate HQ:
358 E Grafton Rd Farimont, WV 26554
Office: 304.366.3021
www.visionsigngroup.com

This artwork is an original design solely for the purpose of presentation. Artwork shown in this document is owned by Vision Sign Group, a division of Vision Custom Signs LLC. No copies, recreations, unauthorized use or reproductions of any kind can be made without written consent from Vision Sign Group, a division of Vision Custom Signs, LLC. Customer signature for approval indicates that all sizes, colors, spelling and specifications are accurate as represented and customer accepts all liability and cost involved if any of the information in this document becomes incorrect or invalid. Once signed, this document is legally binding in conjunction with any website and or proposal presented for costs involved with the project illustrated on this design element. Any changes requested or requested must be presented to Vision Sign Group and agreed upon by all parties to include any cost associated. Changes made after the design intent has been approved may result in additional cost to client. Client agrees to pay any change order costs associated with modifications requested and or made by client after approval has been granted.

Client Approval:

Date: _____

PLEASE CHECK ALL SPELLING, QUANTITIES, COLORS, AND MATERIALS BEFORE APPROVING

Revisions:

- #1 - Added option / DR / 10-03-23
- #2 - Revised / DA / 10-05-23
- #3 - Pylon sign / DA / 10-17-23

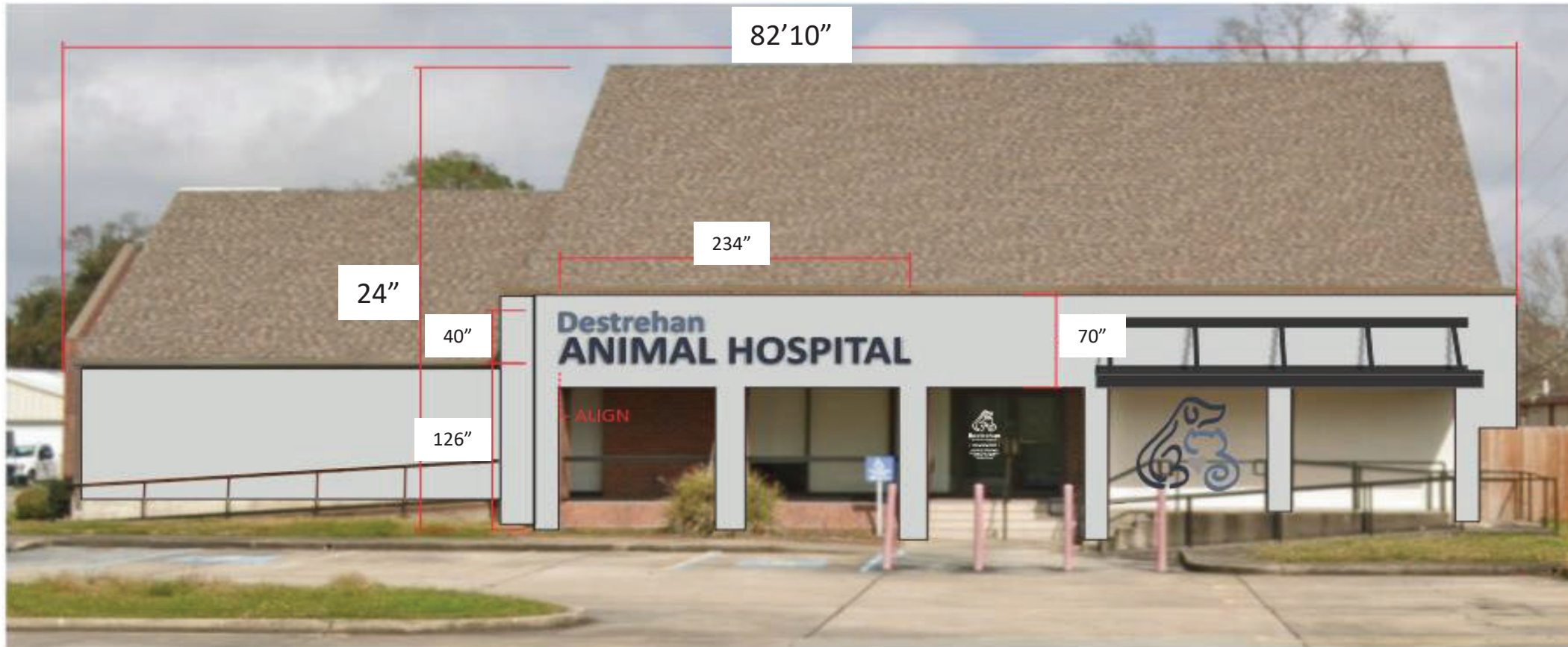
Color & Materials:

Project No: 4964

Date: 08/17/2023

Description: Heartland Vet Partners
Destrehan, LA

Sheet No: S002



PROPOSED (MAY NOT BE TO EXACT SCALE)
SCALE - 1/8" = 1'-0"





**VISION
SIGN GROUP**

Your Vision | Your Brand | Our Commitment

Corporate HQ:
358 E Grafton Rd Farimont, WV 26554
Office: 304.366.3021
www.visiongroup.com

This artwork is an original design solely for the purpose of presentation. Artwork shown in this document is owned by Vision Sign Group, a division of Vision Custom Signs LLC. No copies, reproductions, unauthorized use or reproduction of any kind can be made without written consent from Vision Sign Group, a division of Vision Custom Signs, LLC. Customer signature for approval indicates that all sizes, colors, spelling and specifications are accurate as represented and customer accepts all liability and cost involved if any of the information in this document becomes incorrect or invalid. Once signed, this document is legally binding in cooperation with any estimate and/or proposal presented for costs involved with the project illustrated on this design element. Any changes required or requested must be presented to Vision Sign Group and agreed upon by all parties to include any cost associated. Changes made after the design element has been approved may result in additional cost to client. Client agrees to pay any change order costs associated with modifications requested and/or made by client after approval has been granted.

Client Approval:

Date: _____

PLEASE CHECK ALL SPELLING, QUANTITIES, COLORS, AND MATERIALS BEFORE APPROVING

Revisions:
#1 - Added option / DR / 10-03-23
#2 - Revised / DA / 10-05-23
#3 - Pylon sign / DA / 10-17-23

Color & Materials:

- WHITE
- PMS 621 C
- PMS 7542 C
- PMS 532 C
- BLACK
- WALL COLOR - TBD

Project No: 4964

Date: 08/17/2023

Description: Heartland Vet Partners
Destrehan, LA

Sheet No: S003



ILLUMINATED VIEW



PERSPECTIVE VIEW

Electrical Notes: All electrical components to be UL approved. Customer is responsible for one (1) 120v/20a dedicated circuit with ground per sign within 6' of sign. Lock out switch installed at panel box for all electrical signs. Install in accordance with N.E.C. article 600 and/or local codes. This includes proper grounding and bonding of signs.

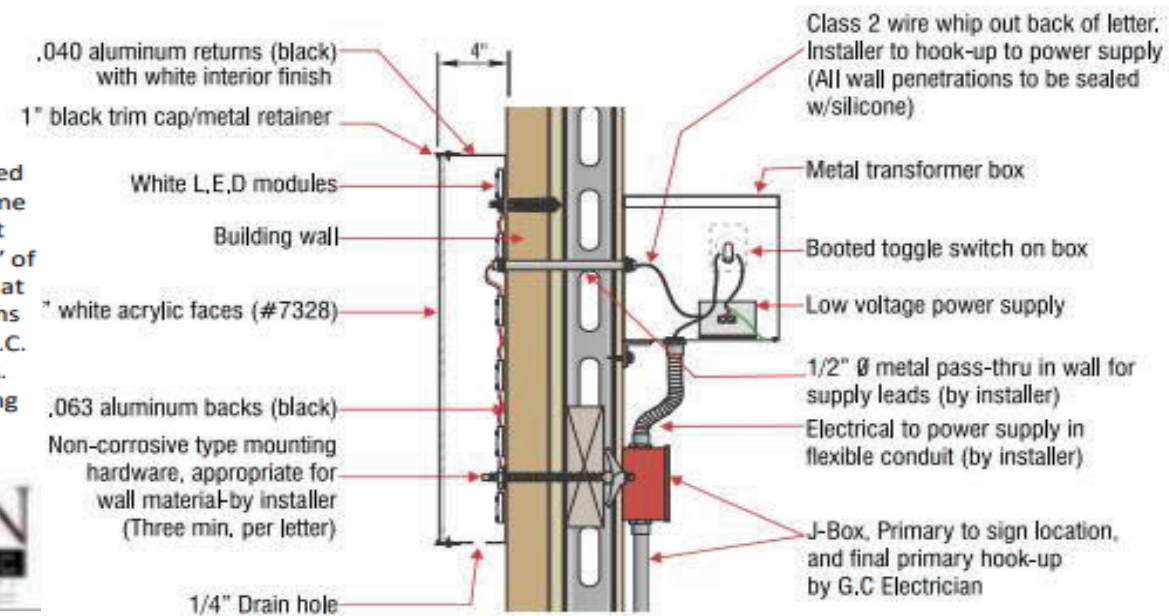


SCOPE OF WORK:

MANUFACTURE AND INSTALL ONE (1) SET OF CHANNEL LETTERS FLUSH MOUNTED



LOW VOLTAGE L.E.D. LIGHTING SYSTEM
U.L. LISTED CLASS 2 - CONFORMS TO U.L. 48 & NEC 600 CODE



SECTION DETAIL - LED ILLUMINATED FLUSH MOUNTED LETTERS

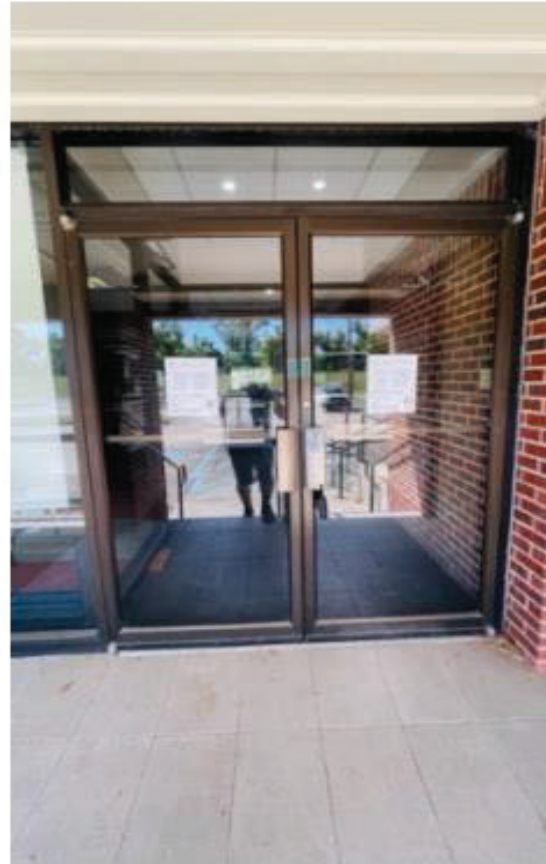
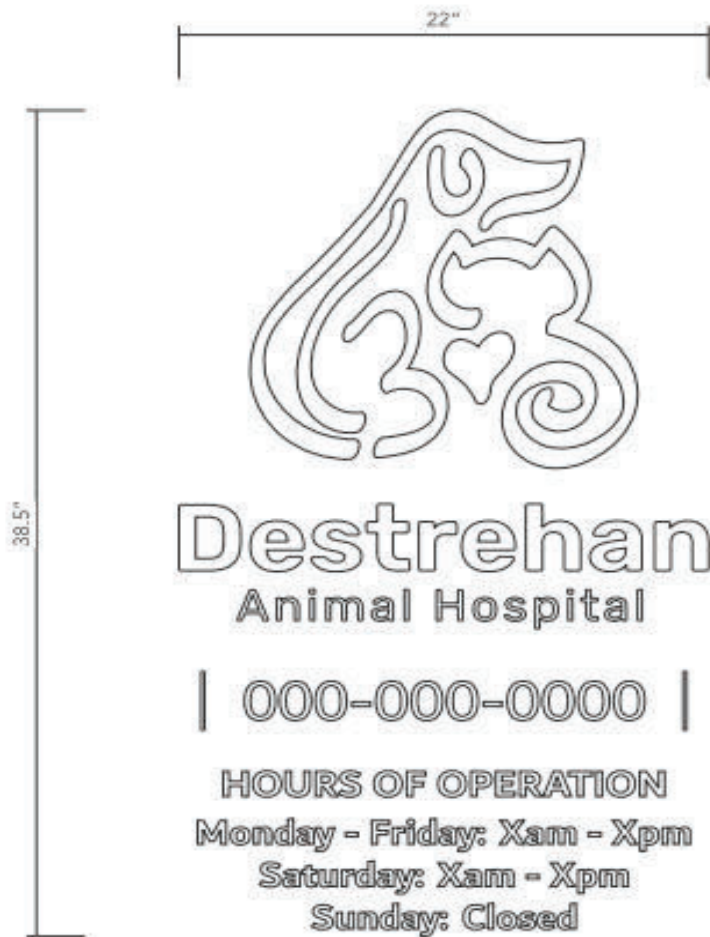
N.T.S

A.1 FACE-LIT CHANNEL LETTERS

65.11 SQ FT

SCALE: 1/2" = 1'-0"

QTY (1)



EXISTING
SCALE: NTS



PROPOSED
SCALE: NTS

SCOPE OF WORK:

- REMOVE EXISTING DOOR VINYL
- MANUFACTURE AND INSTALL (1) 1ST SURFACE WHITE DOOR VINYL
- **NOTE: VERIFY PHONE NUMBER**

B.1 DOOR VINYL 5.88 SQFT
QTY (1) SCALE - 1 1/2" = 1'-0"



**VISION
SIGN GROUP**

Your Vision | Your Brand | Our Commitment

Corporate HQ:
358 E Grafton Rd Farimont, WV 26554
Office: 304.366.3021
www.visiongroup.com

This artwork is an original design solely for the purpose of presentation. Artwork shown in this document is owned by Vision Sign Group, a division of Vision Custom Signs LLC. No copies, reproductions, unauthorized use or reproductions of any kind can be made without written consent from Vision Sign Group, a division of Vision Custom Signs, LLC. Customer signature for approval indicates that all sizes, colors, spelling and specifications are accurate as represented and customer accepts all liability and cost involved if any of the information in this document becomes incorrect or invalid. Once signed, this document is legally binding in conjunction with any estimate and/or proposal presented for costs involved with the project illustrated on this design element. Any changes required or requested must be presented to Vision Sign Group and agreed upon by all parties to include any cost associated. Changes made after the design start has been approved may result in additional cost to client. Client agrees to pay any change order costs associated with modifications requested and/or made by client after approval has been granted.

Client Approval:



Date: _____

PLEASE CHECK ALL SPELLING, QUANTITIES, COLORS, AND MATERIALS BEFORE APPROVING

Revisions:

- #1 - Added option / DR / 10-03-23
- #2 - Revised / DA / 10-05-23
- #3 - Pylon sign / DA / 10-17-23

Color & Materials:

WHITE



Project No: 4964

Date: 08/17/2023

Description: Heartland Vet Partners
Destrehan, LA

Sheet No: S004

Heartland Veterinary Partners
(Destrehan Animal Hospital)
13524 River Road
Destrehan, LA 70047

Project: 4964



**VISION
SIGN GROUP**

Your Vision | Your Brand | Our Commitment

Corporate HQ:
358 E Grafton Rd Farimont, WV 26554
Office: 304.366.3021
www.visiongroup.com

This artwork is an original design solely for the purpose of presentation. Artwork shown in this document is owned by Vision Sign Group, a division of Vision Custom Signs LLC. No copies, recreations, unauthorized use or reproductions of any kind can be made without written consent from Vision Sign Group, a division of Vision Custom Signs, LLC. Customer signature for approval indicates that all sizes, colors, spelling and specifications are accurate as represented and customer accepts all liability and cost involved if any of the information in this document becomes incorrect or invalid. Once signed, this document is legally binding in conjunction with any estimate and/or proposal presented for costs involved with the project illustrated on this design element. Any changes requested or requested must be presented to Vision Sign Group and agreed upon by all parties to include any cost associated. Changes made after the design intent has been approved may result in additional cost to client. Client agrees to pay any change order costs associated with modifications requested and/or made by client after approval has been granted.

Client Approval:



Date: _____

PLEASE CHECK ALL SPELLING, QUANTITIES, COLORS, AND MATERIALS BEFORE APPROVING

Revisions:

- #1 - Added option / DR / 10-03-23
- #2 - Revised / DA / 10-05-23
- #3 - Pylon sign / DA / 10-17-23

Color & Materials:

- WHITE
- PMS 8221 C
- PMS 7542 C
- PMS 532 C

Project No: 4964

Date: 08/17/2023

Description: Heartland Vet Partners
Destrehan, LA

Sheet No: S005



SCOPE OF WORK:

- MANUFACTURE AND INSTALL (1) 1ST SURFACE WINDOW VINYL

W1 WINDOW VINYL 34.75 SQFT
QTY (1) SCALE - 1" = 1'-0"



EXISTING
SCALE: NTS



PROPOSED
SCALE: NTS



SCOPE OF WORK:

- REMOVE EXISTING FACES
- MANUFACTURE AND INSTALL (2) NEW LEXAN FACES W/ VINYL GRAPHICS

D **MONUMENT SIGN** 96 SQFT
QTY (2) SCALE - 1/2" = 1'-0"

Heartland Veterinary Partners
(Destrehan Animal Hospital)
13524 River Road
Destrehan, LA 70047

Project: 4964



VISION
SIGN GROUP

Your Vision | Your Brand | Our Commitment

Corporate HQ:
358 E Grafton Rd Farimont, WV 26554
Office: 304.366.3021
www.visionsigngroup.com

This artwork is an original design solely for the purpose of presentation. Artwork shown in this document is owned by Vision Sign Group, a division of Vision Custom Signs LLC. No copies, recreations, unauthorized use or reproductions of any kind can be made without written consent from Vision Sign Group, a division of Vision Custom Signs, LLC. Customer signature for approval indicates that all sizes, colors, spelling and specifications are accurate as represented and customer accepts all liability and cost involved if any of the information in this document becomes incorrect or invalid. Once signed, this document is legally binding. In conjunction with any estimate and/or proposal presented for costs involved with the project illustrated on this design element. Any changes required or requested, must be presented to Vision Sign Group and agreed upon by all parties to include any cost associated. Changes made after the design intent has been approved by result in additional cost to client. Client agrees to pay any change order costs associated with modifications requested and/or made by client after approval has been granted.

Client Approval:



Date: _____

PLEASE CHECK ALL SPELLING, QUANTITIES, COLORS, AND MATERIALS BEFORE APPROVING.

Revisions:

- #1 - Added option / DR / 10-03-23
- #2 - Revised / DA / 10-05-23
- #3 - Pylon sign / DA / 10-17-23

Color & Materials:

- WHITE
- PM5 6201 C
- PM5 7542 C
- PM5 532 C



Project No: 4964

Date: 08/17/2023

Description: Heartland Vet Partners
Destrehan, LA

Sheet No: S006

