



EBARA ELLIOTT ENERGY

BRL - Baton Rouge
58035 Industrial Blvd
Plaquemine, LA 70764



PHILADELPHIASIGN
BRINGING THE WORLD'S BRANDS TO LIFE

www.philadelphiasign.com

SIGN INVENTORY

SITE: BRL - Baton Rouge		
SIGN	PAGE	PROPOSED SIGN
E01	2	EEE_NIL_PAN_CUST
N01	3	EEE_NIL_PAN_CUST
N02	4	EEE_NIL_PAN_CUST

DAMMON

ENGINEERING, INC.

LOUISIANA & MISSISSIPPI

Slidell, Louisiana
PH: 985-649-5952 Fax: 985-641-5950
www.dammonengineering.com
info@dammonengineering.com



TITLE Ebara Elliot Energy	DWG BY JDH	DATE 09.17.25	DATE -	REVISION	BY	THIS IS AN ORIGINAL UNPUBLISHED DRAWING CREATED BY P.S.C.O. IT IS SUBMITTED FOR YOUR PERSONAL USE IN CONJUNCTION WITH A PROJECT BEING PLANNED FOR YOU BY P.S.C.O. IT IS NOT TO BE SHOWN TO ANYONE OUTSIDE YOUR ORGANIZATION NOR IS IT TO BE USED, COPIED, REPRODUCED, OR EXHIBITED IN ANY FASHION.	
ADDRESS BRL - Baton Rouge 58035 Industrial Blvd Plaquemine, LA 70764		DWG NUM A40890					
		SHEET 1					

Proposed



Signs Rendered Proportional to Photo

Existing: 4'h x 4'w



DAMMON
ENGINEERING, INC.
 LOUISIANA & MISSISSIPPI
 Slidell, Louisiana Ph: 985-649-5832 Fax: 985-641-5950
 www.dammonengineering.com info@dammonengineering.com

PHILADELPHIASIGN
 BRINGING THE WORLD'S BRANDS TO LIFE

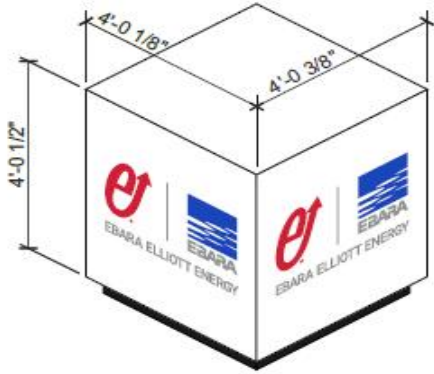
TITLE	Ebara Elliot Energy	DWG BY	JDH
ADDRESS	BRL - Baton Rouge 58035 Industrial Blvd Plaquemine, LA 70764		

DATE	09.17.25
DWG NUM	A40890
SHEET	2

DATE	REVISION	BY
—		

THIS IS AN ORIGINAL UNPUBLISHED DRAWING CREATED BY P.S.C.O. IT IS SUBMITTED FOR YOUR PERSONAL USE IN CONJUNCTION WITH A PROJECT BEING PLANNED FOR YOU BY P.S.C.O. IT IS NOT TO BE SHOWN TO ANYONE OUTSIDE YOUR ORGANIZATION NOR IS IT TO BE USED, COPIED, REPRODUCED, OR EXHIBITED IN ANY FASHION.

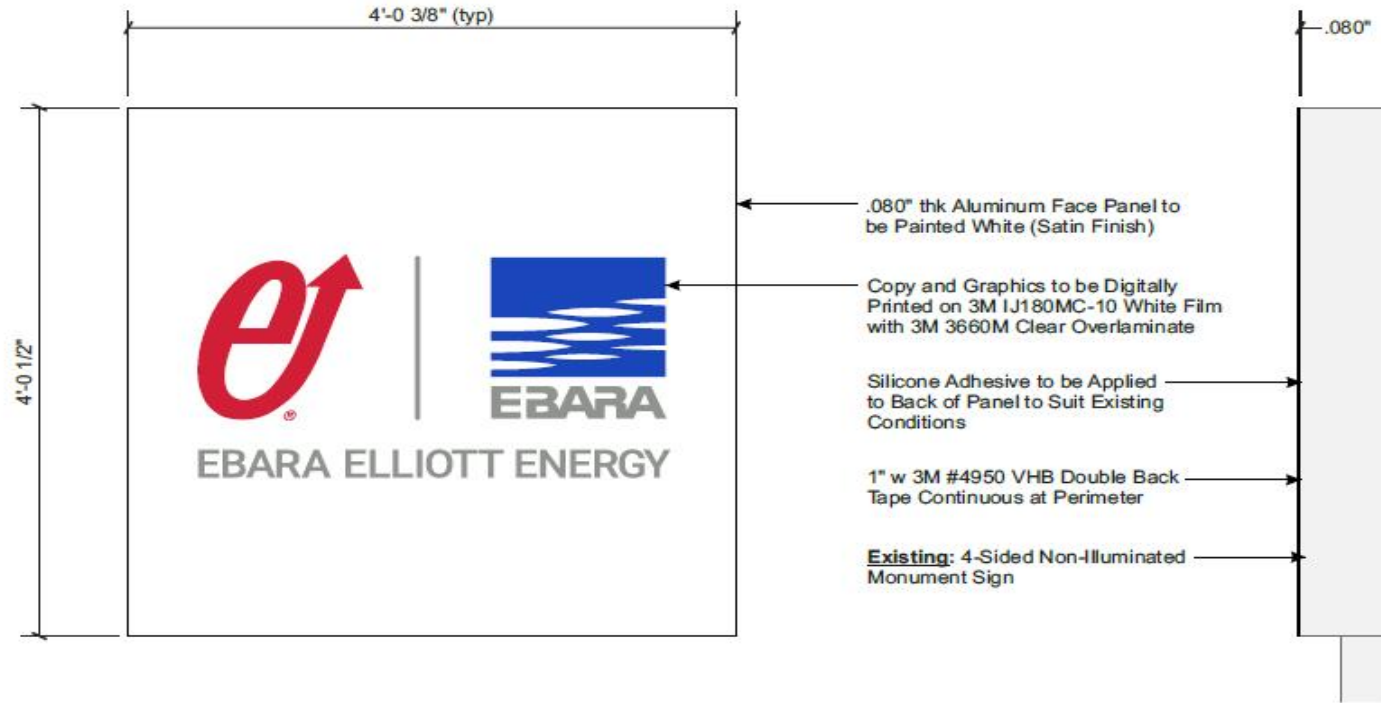
Face Replacements Only



**4-SIDED MONUMENT
PANEL REFACE (4) REQUIRED
ISOMETRIC VIEW
SCALE: NTS**

**PERMIT
DRAWING**

NOTE: All Dimensions and Field Conditions to be Verified and Confirmed From Tech Survey Prior to Releasing for Fabrication.



**SIGN E01
4-SIDED MONUMENT
PANEL REFACE
FRONT VIEW
SCALE: 1" = 1'-0"**

**4-SIDED MONUMENT
PANEL REFACE
SIDE VIEW
SCALE: 1" = 1'-0"**

CUSTOMER:
EBARA ELLIOT

JOB NUMBER:
BRL / S124010

SIGN TYPE:
VARIOUS

LOCATION:
**58035 INDUSTRIAL BLVD
PLAQUEMINE, LA 70764**

DATE:
2/4/2026

DRAWN BY:
GJF

REVISION:
Number: Date: By:

SHEET: **ENG DEPT**
1 OF 2

DWG NUMBER:
B-116177

ENGINEER SEAL:

**ULTIMATE WIND SPEED 145 MPH
EXPOSURE C**

N01 EEE_NIL_PAN_CUST 9'h x 14' 6"w x 2'd Non-Illuminated Aluminum Pan with Vinyl Graphics (130.5 SF)
 Note: Wall remediation required

Proposed



Signs Rendered Proportional to Photo

Existing



DAMMON
ENGINEERING, INC.
 LOUISIANA & MISSISSIPPI
 Slidell, Louisiana Ph: 985-649-5852 Fax: 985-641-5950
 www.dammonengineering.com info@dammonengineering.com



TITLE Ebara Elliot Energy ADDRESS BRL - Baton Rouge 58035 Industrial Blvd Plaquemine, LA 70764	DWG BY JDH	DATE 09.17.25	DATE -	REVISION	BY THIS IS AN ORIGINAL UNPUBLISHED DRAWING CREATED BY P.S.C.O. IT IS SUBMITTED FOR YOUR PERSONAL USE IN CONJUNCTION WITH A PROJECT BEING PLANNED FOR YOU BY P.S.C.O. IT IS NOT TO BE SHOWN TO ANYONE OUTSIDE YOUR ORGANIZATION NOR IS IT TO BE USED, COPIED, REPRODUCED, OR EXHIBITED IN ANY FASHION.
	DWG NUM A40890				
	SHEET 3				



PHILADELPHIASIGN
BRINGING THE WORLD'S BRANDS TO LIFE

707 West Spring Garden Street
Palmyra, New Jersey 08065

Phone: 856.829.1460
Fax: 856.829.8549
www.philadelphiasign.com

CUSTOMER:

EBARA ELLIOT

JOB NUMBER:

BRL / S124010

SIGN TYPE:

VARIOUS

LOCATION:

**58035 INDUSTRIAL BLVD
PLAQUEMINE, LA 70764**

DATE:

2/4/2026

DRAWN BY:

GJF

REVISION:

Number: Date: By:

SHEET:

2 OF 2

ENG DEPT

DWG NUMBER:

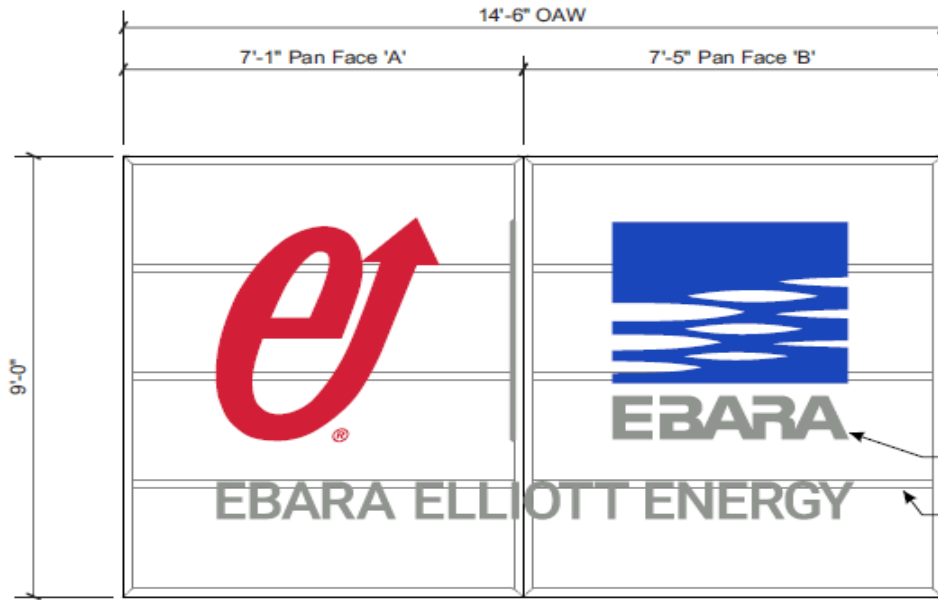
B-116177

ENGINEER SEAL:

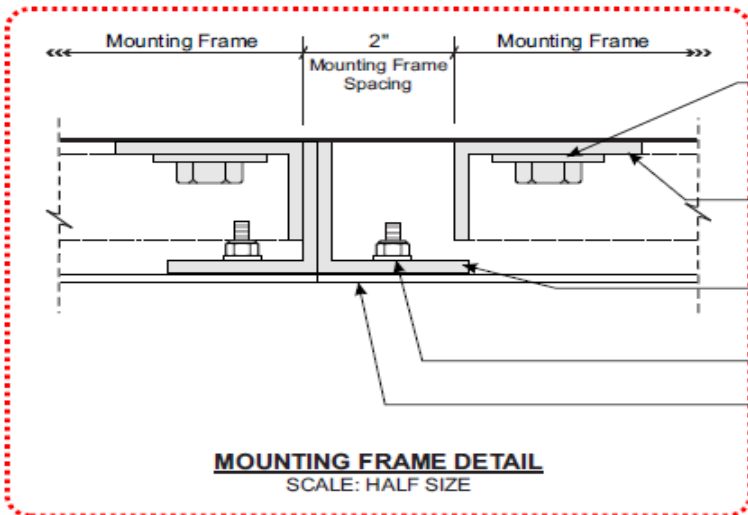


ULTIMATE WIND SPEED 145 MPH
EXPOSURE C

THIS IS AN ORIGINAL UNPUBLISHED DRAWING
CREATED BY PSCD. IT IS SUBMITTED FOR YOUR
PERSONAL USE IN CONJUNCTION WITH A PROJECT
BEING PLANNED FOR YOU BY PSCD. IT IS NOT TO
BE SHOWN TO ANYONE OUTSIDE YOUR
ORGANIZATION NOR IS IT TO BE USED, COPIED,
REPRODUCED, OR EXHIBITED IN ANY FASHION.

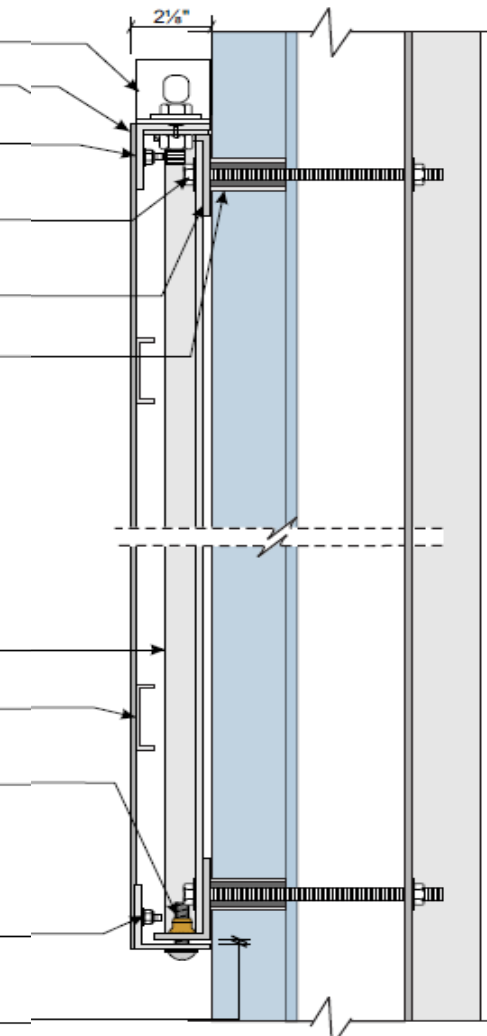


**SIGN N01 - WALL PAN
FRONT VIEW
SCALE: 3/8" = 1'-0"**



**MOUNTING FRAME DETAIL
SCALE: HALF SIZE**

- 3/16" thk x 2" x 2" Steel Galvanized Lifting Clip
- 1/8" thk Aluminum Face Pan Painted White (Satin Finish)
- 2" x 2" x 1/4" thk Aluminum Angle Frame Attached to Back of Face Pans w/ 3M 4950 VHB Tape and #10 x 3/4" lg Studs with Fiberlock Nuts (12" OC)
- Attach to Building with 3/8" Ø Hex Head Thru Bolts into 2" x 2" x 1/4" thk Aluminum Angle Vertical Sleepers Bolted to Existing Steel Building Frame
- 1-1/2" x 2-1/2" x 3/16" thk Aluminum Angle Mounting Frame
- 1" Ø Aluminum Tube Spacers Painted to Match Fascia and to Prevent Wall Compression
- 1/8" thk Aluminum Face Pan Painted White (Satin Finish)
- Graphics to be Digitally Printed on 3M U180MC-10 White Film with 3M 3660M Clear Overlaminate
- 2" x 1/2" x 1/8" thk Aluminum Channel Face Frame Brace Attached to Back of Face Pans w/ 3M 4950 VHB Tape
- 2" x 2" x 1/4" thk Aluminum Angle Frame Attached to Back of Face Pans w/ 3M 4950 VHB Tape and #10 x 3/4" lg Studs with Fiberlock Nuts (12" OC)
- 1" x 1" x 3/16" thk Aluminum Angle Vertical Mounting Braces
- 2" x 1/2" x 1/8" thk Aluminum Channel Face Frame Brace Attached to Back of Face Pans w/ 3M 4950 VHB Tape
- 3/8-16 x 1-1/2" lg Round Head Phillips Machine Screw into Nutsert 2'-0" on Center to be Painted to Match Sign
- Attach to Building with 3/8" Ø Hex Head Thru Bolts into 2" x 2" x 1/4" thk Aluminum Angle Vertical Sleepers Bolted to Existing Steel Building Frame
- #10 x 3/4" lg Studs w/ Fiberlock Nuts (12" OC)
- 1-1/2" x 2-1/2" x 3/16" thk Alum. Angle Mounting Frame
- 1/8" Clearance at Top (3/16" @ Bottom)
- 2" x 2" x 1/4" thk Aluminum Angle Frame Attached to Back of Face Pans w/ 3M 4950 VHB Tape and #10 x 3/4" lg Studs with Fiberlock Nuts (12" OC)
- #10 x 3/4" lg Studs with Fiberlock Nuts (12" OC)
- 1/8" thk Alum. Face Pan Painted White (Satin Finish)



**SIGN E02 - WALL PAN
SECTION VIEW
SCALE: 3" = 1'-0"**

NOTE: All Dimensions and Field Conditions to be Verified and Confirmed From Tech Survey Prior to Releasing for Fabrication.

**PERMIT
DRAWING**