

PREPARED ESPECIALLY FOR



H&R BLOCK

SITE #18233
1912 E JUDGE PEREZ DR,
CHALMETTE, LA 70043

YOUR PARTNER IN BUILDING AN **OUTSTANDING** IMAGE

image national signs **in**TM
...bringing your image to light!



 AERIAL VIEW
SCALE: N.T.S.

DESIGN SIGN STATUS - MAIN ID WALL SIGNS		
SIGN #	LOCATION	SIGN TYPE
1	NORTH ELEVATION	CHANNEL LETTERS - ILLUMINATED ON RACEWAY

DESIGN SIGN STATUS - FREESTANDING SIGNS		
SIGN #	LOCATION	SIGN TYPE
2	EAST JUDGE PEREZ DR	D/F PYLON SIGN - POLY -ILLUMINATED

DAMMON
ENGINEERING, INC.
LOUISIANA & MISSISSIPPI
214011 Lousiana
PH: 504-641-5532 Fax: 504-641-5550
www.dammonengineering.com
info@dammonengineering.com

REVISIONS


R1)	
R2)	
R3)	
R4)	

It is the intent and purpose of this color rendering to provide a basic color representation of your sign finish and color. However, digital media and printed colors will vary from actual paint finish and color. Existing painted surfaces will have a perceptible difference in shade and sheen from your sign finish. Providing a sample of the paint you wish to match or a Matthews paint color formula will minimize the differences.

image national signs
...bringing your image to light!



16265 Star Rd., Nampa, ID 83687 - toll free: 800.592.8058 - tele: 208.345.4020
imagenational.com

 NAMP PLANT -
ID #433195-001
U.S. & P.R. - We sign conform to UL-402011
(a) label as required by A must comply with U.S. #1
label if provided. Color of all signs must be
compliant. This sign is intended to be installed in
accordance with manufacturer's instructions. All
national standards and codes are applicable to local
codes. This includes proper grounding and bonding
of the sign.



H&R BLOCK

Site #: 18233
1912 E JUDGE PEREZ DR,
CHALMETTE, LA 70043

File: HRB-18233-CHALAMETTE LA-112525 Version: 1 Date: 11/25/25

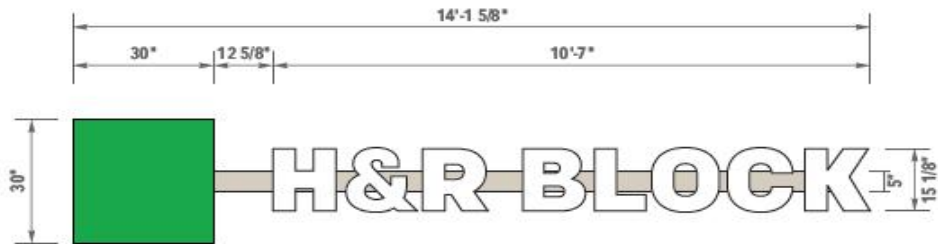
Designer: MB Reviewed by: XX

Account Manager: CS Engineer:

Page
2 of 8

Sign 1 ILLUMINATED CHANNEL LETTERS - RACEWAY

SCALE: 3/8" = 1'-0"



GENERAL / INSTALLER NOTES:

- TAKING "BONZAI" SPACE, PAINT RACEWAY SW-9516

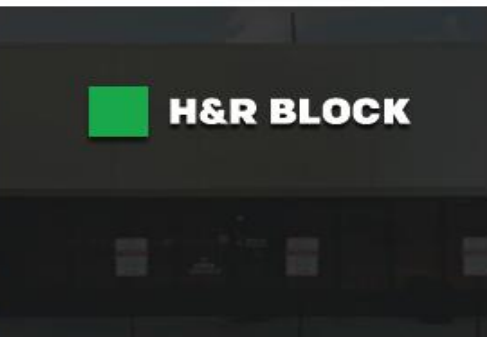
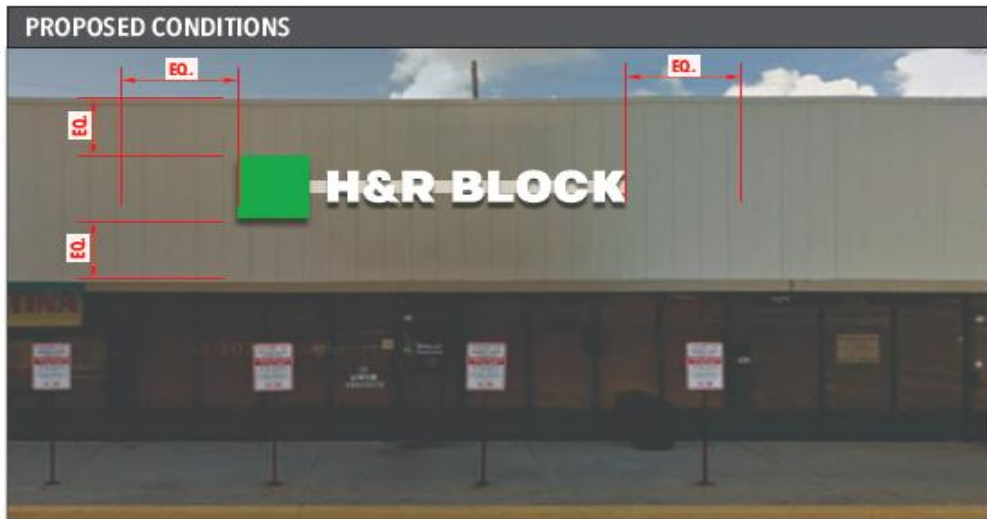
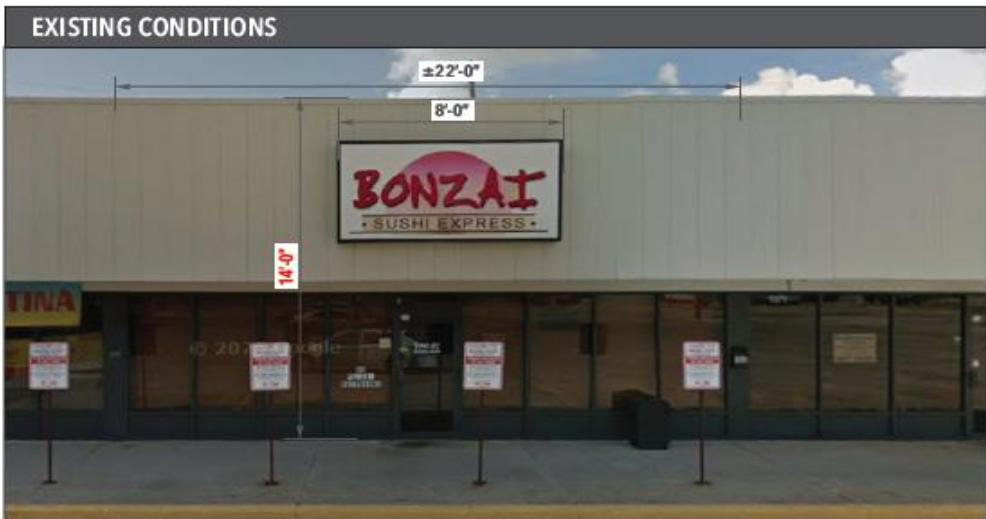
CITY CODE & ALLOWANCES:

- Total area of ALL business signs on a bldg or lot shall not exceed 150sf or the sum of 3sf/ LF of lot frontage, whichever is the greater.
14'-0" x 22'-0" = 308 total square feet.

EXISTING SQ. FT.: 32
ALLOWED SQ. FT.: 150
PROPOSED SQ. FT.: 35.3

SIGN DETAILS:

PART #HRBLR1530LWH



SCALE: 3/16" = 1'-0"

It is the intent and purpose of this color rendering to provide a basic color representation of your sign finish and color. However, digital media and printed colors will vary from actual paint finish and color. Existing painted surfaces will have a perceptible difference in shade and sheen from your sign finish. Providing a sample of the paint you wish to match or a Matthews paint color formula will minimize the differences.

image national signs **in**
...bringing your image to light!
16265 Star Rd., Nampa, ID 83687 - toll free: 800.592.8058 - tele: 208.345.4020
imagenational.com

NAMPA PLANT -
UL #433195-001
U.S. & P.R. - All signs conform to UL-487 216
for electrical safety. All signs comply with UL-41.1
and all printed or painted signs are made to CAD
compliance. These signs are made to be installed in
accordance with the instructions of the manufacturer.
The color of the sign and the sign finish is not
guaranteed. The color of the sign and the sign finish is not
guaranteed.

H&R BLOCK

Site #: 18233
1912 E JUDGE PEREZ DR,
CHALMETTE, LA 70043

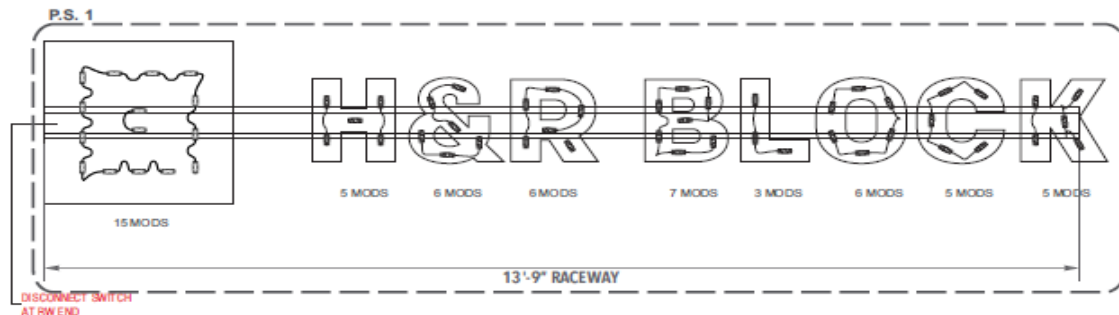
File: HRB-18233-CHALAMETTE LA-112525	Version: 1	Date: 11/25/25
Designer: MB	Reviewed by: XX	Page 3 of 8
Account Manager: CS	Engineer:	

Sign 1 ILLUMINATED CHANNEL LETTERS - RACEWAY

SCALE: 3/8" = 1'-0"



Principal PL-QM2-TW150-P (Qwik Mod 2) - (58 MODS)
 (1) Principal Sloan 12V 60W Power Supply - @ 0.80 Amps Each
 Electrical Wire 2-Wire 18ga Jacketed - 4' WHIP per Letter



LED / RACEWAY LAYOUT
 SCALE: 1/2" = 1'-0"

FABRICATION SPECIFICATIONS

1	PAN CHANNEL LETTERS	FACE MATERIAL	WHITE ACRYLIC 2447
		TRIM CAP	1" HRB GRAY
		RETURN DEPTH	5"
		RETURN COLOR	PRE-PAINTED HRB GRAY
2	PAN CHANNEL LOGO	FACE MATERIAL	WHITE ACRYLIC 2447
		TRIM COLOR	PER COLOR KEY
		RETURN DEPTH	5"
		RETURN COLOR	PER COLOR KEY
3	RACEWAY	ILLUMINATION	WHITE LED
		MATERIAL	SIGNCOMP
		COLOR	PER COLOR KEY

GENERAL NOTES

COLOR KEY

V1	VINYL	ARLON 2500 - GREEN 2586 TRANSLUCENT
P1	PAINT	MP#84430 SMOOTH SATIN FINISH
P2	PAINT	SW 9516

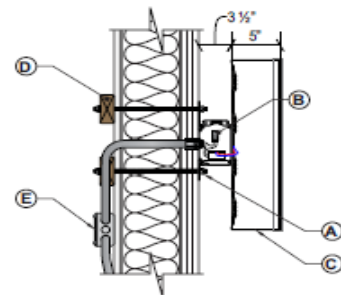
NOTE: THE COLORS DEPICTED ON THIS RENDERING REPRESENT COLOR INTENT ONLY AND MAY NOT MATCH ACTUAL COLORS ON FINISHED PRODUCT. PLEASE REFER TO COLOR CALL-OUTS AND SPECIFIED VENDOR SAMPLES FOR APPROVED COLOR SPECIFICATIONS.

SHIPPING LIST

MATERIAL	QTY.
1/2" FLEX CONDUIT	6'
1/2" FLEX CONNECTORS	2
TOUCH-UP PAINT	

ELECTRICAL REQUIREMENTS

VOLTS	120	AMP	0.80	CIRCUIT	1
-------	-----	-----	------	---------	---



INSTALL

- Non-Corrosive Securement Using Appropriate Mounting Hardware Painted to Match Background.
- Disconnect Switch at Left End of Raceway
- 1/4"Ø Drain Holes with Baffles.
- Blocking as Required per Location
- 20 amp 120 V. Circuits Required (Brought to within 6' of sign BY OTHERS)
- Raceway

APPROVED FASTENER SCHEDULE

FASTENER	USE
3/16" - 1/2" LAG SCREW	FOR USE WITH WOOD OR CONCRETE WALL SYSTEMS. 110° MIN POINT (NO 90° INCLUDE NOTED)
1/4" - 3/8" TR HEAD SCREW	FOR USE WITH WOOD OR CONCRETE BLOCK OR RETRY WALL SYSTEMS
3/8" Ø HD LAG LID (LARGE DIAMETER DRIFTING)	FOR USE WITH CONCRETE BLOCK OR CONCRETE DRILL HOLE OF 3/4"
3/8" Ø AL HELIX TROD WITH HYD MAX ADHESIVE	FOR USE WITH CONCRETE (MINED A MIN OF 2")
3/8" Ø AL HELIX TROD WITH HYD ADHESIVE	FOR USE WITH MASONRY AND BRICK (MINED A MIN OF 2.5")
3/8" Ø AL HELIX TROD WITH HYD ADHESIVE	FOR USE WITH CONCRETE BLOCK (MINED A MIN OF 2")
3/8" Ø AL HELIX TROD (SLEVE AND OR)	FOR USE WITH CONCRETE, MASONRY AND BRICK (MINED A MIN OF 2.5")
3/8" Ø AL LAG WITH 3/8" Ø HD LID (W/DRIF)	FOR USE WITH CONCRETE, MASONRY AND BRICK (MINED A MIN OF 2")
4 10 3/16" HD SECTION W/ FINGER DRAGGER IN TO PLASTIC WALL MOUNT	FOR USE WITH CONCRETE, MASONRY & BRICK TO BE DRIVEN INTO PLASTIC WALL MOUNT

MANUFACTURING REVISIONS

NO	DESCRIPTION	INITIALS
A		
B		
C		

DAMMON
 ENGINEERING, INC.
 LOUISIANA & MISSISSIPPI
 8100 LAKEVIEW
 PO BOX 440000
 NEW ORLEANS, LA 70164-0000
 WWW.DAMMONENGINEERING.COM
 INFO@DAMMONENGINEERING.COM

It is the intent and purpose of this color rendering to provide a basic color representation of your sign finish and color. However, digital media and printed colors will vary from actual paint finish and color. Existing painted surfaces will have a perceptible difference in shade and sheen from your sign finish. Providing a sample of the paint you wish to match or a Matthews paint color formula will minimize the differences.

image national signs
 ...bringing your image to light!



16265 Star Rd., Nampa, ID 83687 - toll free: 800.592.8058 - telex: 208.345.4020
 imagenational.com

NAMPA PLANT -
 UL #43165-001
 U.S. & P.R. - All signs conform to UL-4820-1
 (a) for electrical wiring (b) must comply with UL-481
 (c) for fire retardant. Canada - all signs must be CANS
 compliant. This sign is to be installed in
 accordance with requirements of the National
 Electrical Code and/or applicable local
 codes. This includes proper grounding and wiring
 of the sign.



H&R BLOCK

Site #: 18233
 1912 E JUDGE PEREZ DR,
 CHALMETTE, LA 70043

File: HRB-18233-CHALAMETTE-LA-112525

Version: 1

Date: 11/25/25

Designer: MB

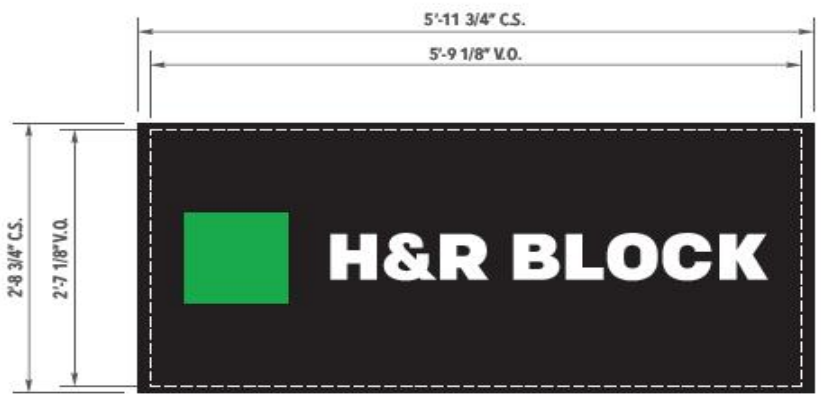
Reviewed by: XX

Account Manager: CS

Engineer:

Page
 5 of 8

Sign **2** REFACE EXISTING TENANT PANELS
 SCALE: 3/4" = 1'-0" **Face Replacement Only**



SCALE: 3/32" = 1'-0"



GENERAL / INSTALLER NOTES:

CITY CODE & ALLOWANCES:

- City code pertaining to this sign

EXISTING SQ. FT.: EXISTING OAH:
 ALLOWED SQ. FT.: ALLOWED OAH:
 PROPOSED SQ. FT.: PROPOSED OAH:

SIGN DETAILS:



DAMMON
 ENGINEERING, INC.
 LOUISIANA & MISSISSIPPI
 81641 Louisiana www.dammonengineering.com
 PO 900-649-3032 Fax: 900-641-9000 info@dammonengineering.com

It is the intent and purpose of this color rendering to provide a basic color representation of your sign finish and color. However, digital media and printed colors will vary from actual paint finish and color. Existing painted surfaces will have a perceptible difference in shade and sheen from your sign finish. Providing a sample of the paint you wish to match or a Matthews paint color formula will minimize the differences.

image national signs **in**
 ...bringing your image to light!
 16265 Star Rd., Tampa, ID 83687 - toll free: 800.592.8058 - tele: 208.345.4020
 imagenational.com

NAMPA PLANT -
 DL #433185-001
 U.S. & P.R. - All signs conform to 18-48726
 All other conditions apply to all signs and to all signs
 made in accordance with the CAGS
 compliance. This sign is intended to be used in
 accordance with the requirements of all applicable
 regulations. The color of the sign is not to be
 changed. This includes proper printing and viewing
 of the sign.

H&R BLOCK

Site #: 18233
 1912 E JUDGE PEREZ DR,
 CHALMETTE, LA 70043

File: HRB-18233-CHALAMETTE LA-112525	Version: 1	Date: 11/25/25
Designer: MB	Reviewed by: XX	Page 4 of 8
Account Manager: CS	Engineer:	