

Wing Stop AA012 | New Orleans, LA

SITE PLAN



ALL SIZES TO BE FIELD VERIFIED

Customer Approval _____ Signed by _____ Date 11/6/2024
 Landlord Approval AREETHA NABBAR Date _____

IDENTICOM SIGN SOLUTIONS
 24657 Halsted Road
 Farmington Hills, MI 48335
 T.248.344.9590 | F.248.946.4198
 info@identicomsigns.com
 www.identicomsigns.com



This is an original artwork drawing created by Identicom Sign Solutions, LLC ®. It is part of a planned project and is not to be exhibited, copied or reproduced in any fashion without the written permission of Identicom Sign Solutions, LLC ®
 ELECTRICAL CONNECTION TO BE DONE BY OTHERS

Disclaimer - This drawing is conceptual and was prepared to show approximate location, arrangement, size and color of signage. It is Subject to change and not intended to replace the use of construction documents and/or actual field dimensions.

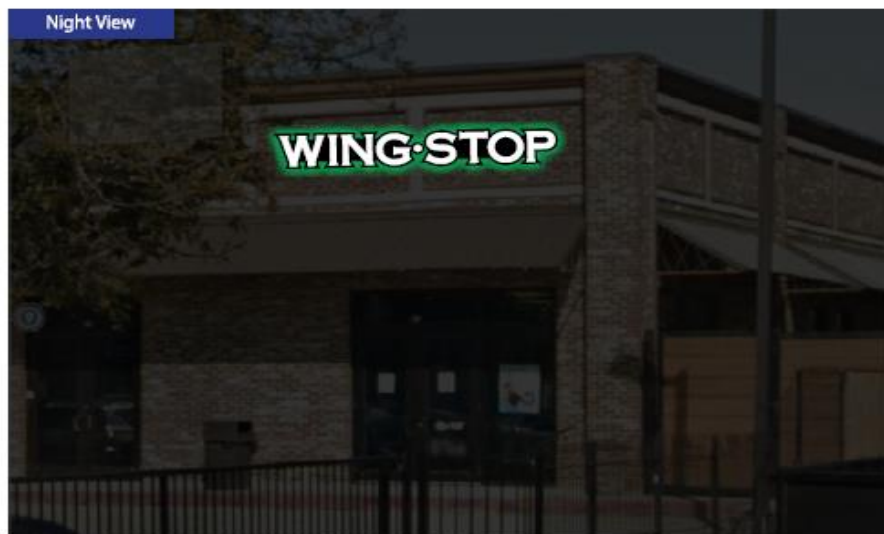
| | |
|--|----------------------|
| DATE: 11/05/24 | OWNER: JEM |
| PROJECT: Wing Stop AA012 | ARCHITECT: J. Maiuri |
| ADDRESS: 2101 S. Claiborne Ave., Suite D-1 | PROJECT NO.: |
| City/State: New Orleans, LA 70125 | PHONE #: D5040 |



Wing Stop AA012 | New Orleans, LA

FRONT ELEVATION

20' suite length
 17'8" sign band length
 60" sign band height
 206" building height
 156" height



ALL SIZES TO BE FIELD VERIFIED

Customer Approval Signed by: HAFETH JABBAR Date: 11/6/2024
 Landlord Approval Date: _____

IDENTICOM SIGN SOLUTIONS
 24657 Halsted Road
 Farmington Hills, MI 48335
 T. 248.344.9590 | F. 248.946.4198
 info@identicomsigns.com
 www.identicomsigns.com

UL
 SIGNS TO BE MANUFACTURED IN ACCORDANCE WITH ARTICLE 609 OF THE NATIONAL ELECTRICAL CODE (NEC) AND/OR OTHER APPLICABLE LOCAL CODES. THIS INCLUDES PROPER GROUNDING AND BONDING OF SIGNS. SIGN WILL BEAR UL LABELS.

This is an original artwork drawing created by Identicom Sign Solutions, LLC. It is part of a planned project and is not to be exhibited, copied or reproduced in any fashion without the written permission of Identicom Sign Solutions, LLC. ELECTRICAL CONNECTION TO BE DONE BY OTHERS

Disclaimer - This drawing is conceptual and was prepared to show approximate location, arrangement, size and color of signage. It is Subject to change and not intended to replace the use of construction documents and/or actual field dimensions.

| | |
|---|----------------------|
| DATE: 11/05/24 | DESIGNER: JEM |
| PROJECT: Wing Stop AA012 | ARCHITECT: J. Majuri |
| ADDRESS: 2101 S. Galbome Ave, Suite D-1 | PROJECT NO.: |
| CITY/STATE: New Orleans, LA 70125 | STAMP #: D5040 |

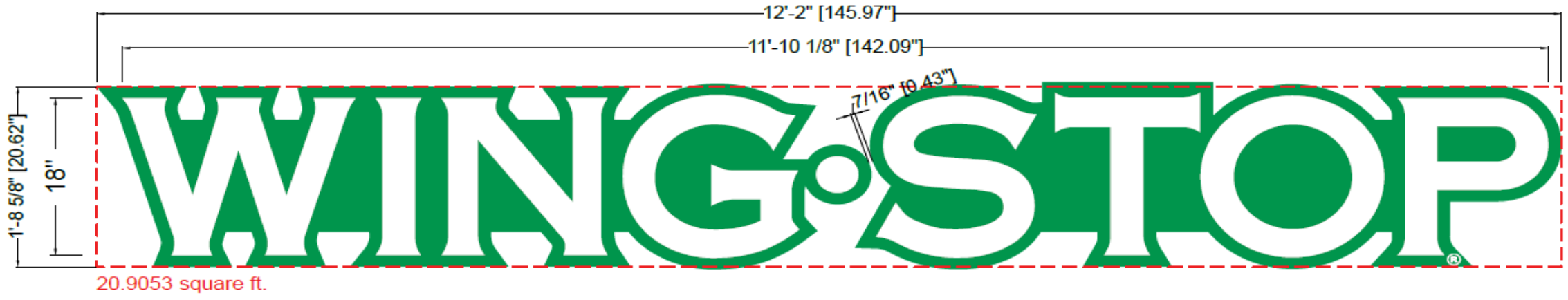


Wing Stop AA012 | New Orleans, LA

FRONT ELEVATION - SPECIFICATIONS



QTY 1: LED Illuminated Channel Letters on Contoured Aluminum Backer Panel w/ Green Halo Lighting

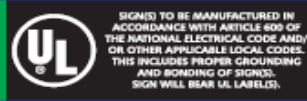


ALL SIZES TO BE FIELD VERIFIED

| | | |
|-------------------|---------------|-----------|
| Customer Approval | Signed by | Date |
| Landlord Approval | HAFETH NABBAR | 11/6/2024 |



24657 Halsted Road
Farmington Hills, MI 48335
T.248.344.9590 | F.248.946.4198
info@identicomsigns.com
www.identicomsigns.com



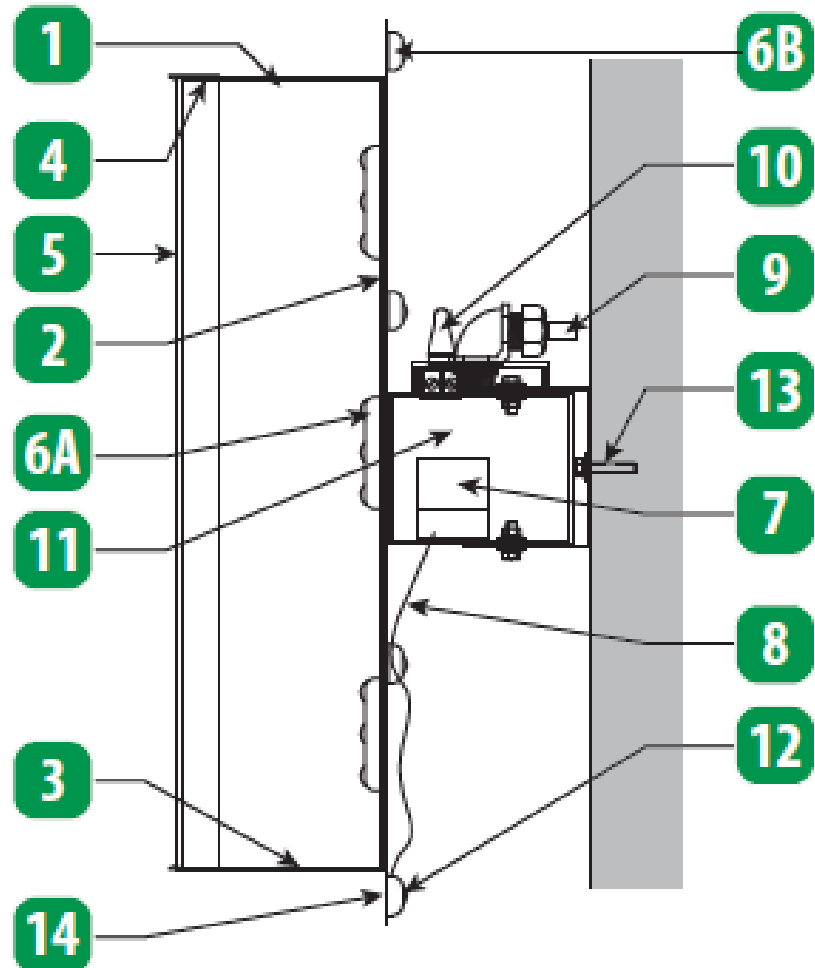
This is an original artwork drawing created by Identicom Sign Solutions, LLC ®. It is part of a planned project and is not be exhibited, copied or reproduced in any fashion without the written permission of Identicom Sign Solutions, LLC ®
ELECTRICAL CONNECTION TO BE DONE BY OTHERS

Disclaimer - This drawing is conceptual and was prepared to show approximate location, arrangement, size and color of signage. It is Subject to change and not intended to replace the use of construction documents and/or actual field dimensions.

| | | | |
|------------|----------------------------------|-------------|-----------|
| DATE | 11/05/24 | DRAWN BY | JEM |
| PROJECT | Wing Stop AA012 | DESIGNED BY | J. Maiuri |
| ADDRESS | 2101 S. Claiborne Ave. Suite D-1 | PROJECT NO. | |
| CITY/STATE | New Orleans, LA 70125 | DRAWING NO. | D5040 |



Sign Specifications

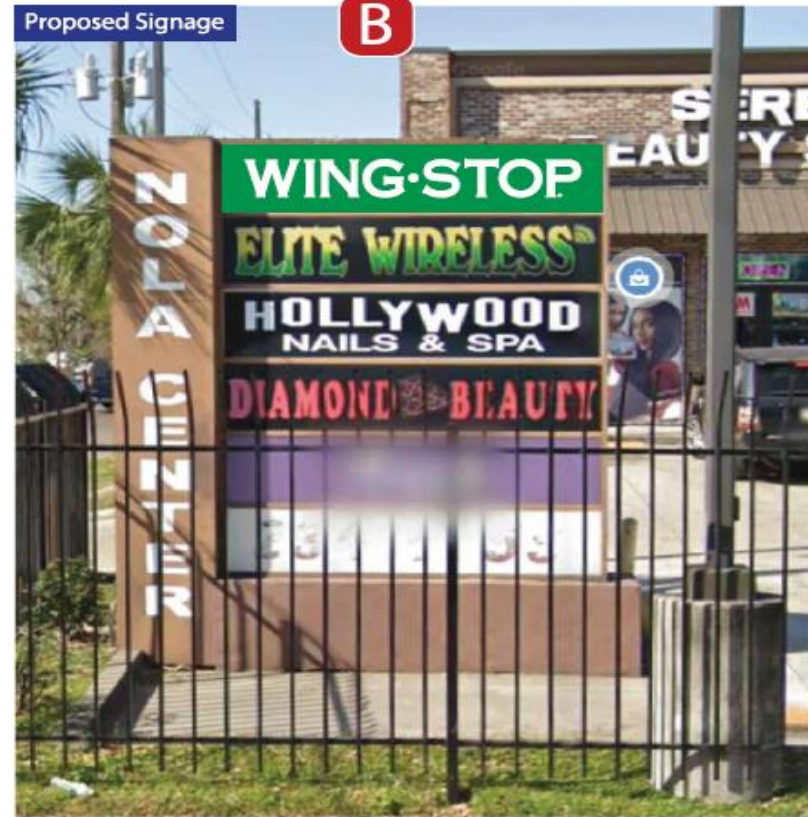
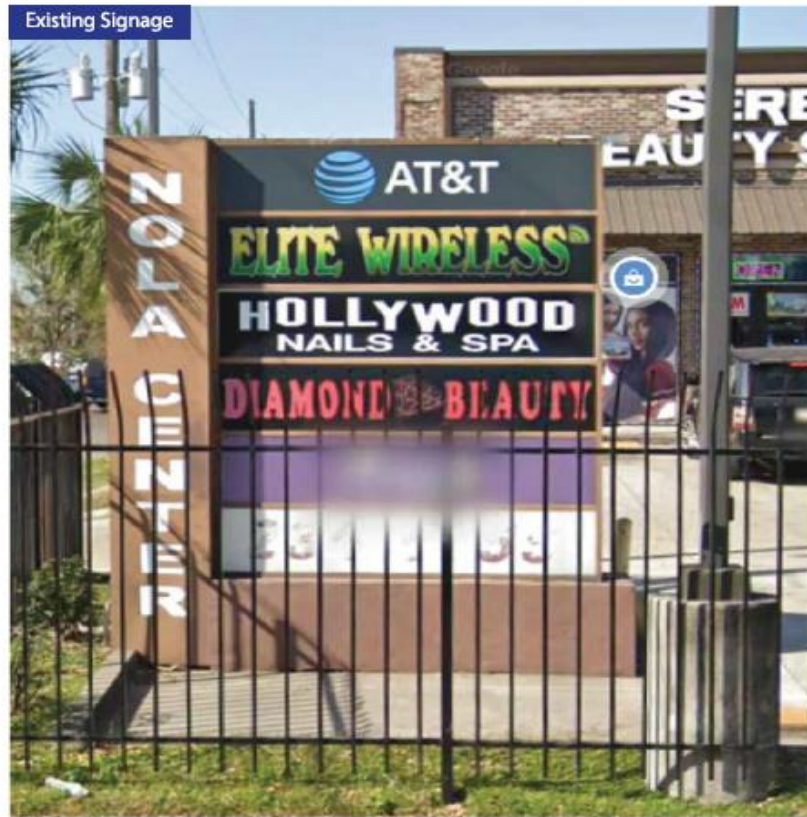


| DESCRIPTION | | |
|---------------------|--------------|---|
| 1 | RETURN | 5" .040 PREFINISHED METALLIC FINISH OUTSIDE & WHITE INSIDE |
| 2 | BACK | .063 PREFINISHED WHT/ WHT- INTERIOR |
| 3 | HOLES | WEEP HOLES |
| FACE / DECORATION | | |
| 4 | RETAINER | 1" JEWELITE- METALLIC SILVER |
| 5 | FACE | 1/4" WHITE ACRYLIC #7328 |
| LIGHTING / ASSEMBLY | | |
| 6A | WHITE LED | PRINCIPAL PL-QMB-TW200-P-TRUE WHITE |
| 6B | GREEN LED | PRINCIPAL PL-QMB-GR129-P (M-QMTXD-GR) FOR HALO LIGHTING |
| 6C | ALL LEDS | ATTACHED WITH SILICONE / CAULK APPROVED FOR OUTDOOR APPLICATIONS |
| 7 | POWER SUPPLY | PRINCIPAL 60W POWER SUPPLY PRIPL-60-12-U |
| 8 | SECONDARY | SUPPLY CABLE WITH GROUND ACCORDING TO CODE |
| 9 | WIRE FEED | 90° ELBOW CONNECTOR TO SEAL-TITE PAINTED TO MATCH RACEWAY |
| 10 | SWITCH | ON / OFF SWITCH ON ENCLOSURE BOX |
| 11 | RACEWAY | .090 FABRICATED 4 1/2" X 4 1/2" RACEWAY PAINTED TO MATCH STRUCTURE- AS DETAILED |
| MOUNTING / SUPPORT | | |
| 12 | B/G PANEL | .090 ALUMINUM CONTOUR BACKGROUND PAINTED AN20 NOBEL PMS #355 SATIN GREEN |
| 13 | MOUNTING | FABRICATED BRACKET W/ NON-CORROSIVE HARDWARE TO SECURE TO RACEWAY ALL PAINTED TO MATCH RACEWAY- AS DETAILED |
| 14 | ® REGISTER | 3M VINYL #010 WHITE ON CONTOUR BOTTOM OF "P" AS RENDERED |

Wing Stop AA012 | New Orleans, LA

MONUMENT ELEVATION

Face Change Only



ALL SIZES TO BE FIELD VERIFIED

Customer Approval Signed by ARFETH MBBAR Date 11/6/2024
 Landlord Approval Date _____

IDENTICOM SIGN SOLUTIONS
 24657 Halsted Road
 Farmington Hills, MI 48335
 T.248.344.9590 | F.248.946.4198
 info@identicomsigns.com
 www.identicomsigns.com

UL
 SIGNS TO BE MANUFACTURED IN ACCORDANCE WITH ARTICLE 609 OF THE NATIONAL ELECTRICAL CODE AND/OR OTHER APPLICABLE LOCAL CODES. THIS INCLUDES PROPER GROUNDING AND BONDING OF SIGNS. SIGN WILL BEAR UL LABELS.

This is an original artwork drawing created by IdentiCom Sign Solutions, LLC ®. It is part of a planned project and is not to be exhibited, copied or reproduced in any fashion without the written permission of IdentiCom Sign Solutions, LLC ®
 ELECTRICAL CONNECTION TO BE DONE BY OTHERS

Disclaimer - This drawing is conceptual and was prepared to show approximate location, arrangement, size and color of signage. It is Subject to change and not intended to replace the use of construction documents and/or actual field dimensions.

| | | | |
|------------|----------------------------------|-------------|-----------|
| DATE | 11/05/24 | DESIGNER | JEM |
| PROJECT | Wing Stop AA012 | ARCHITECT | J. Maiuri |
| ADDRESS | 2101 S. Claiborne Ave, Suite D-1 | PROJECT NO. | |
| CITY/STATE | New Orleans, LA 70125 | DWG NO. | D5040 |



Wing Stop AA012 | New Orleans, LA

TENANT PANEL - SPECIFICATIONS

B

QTY 2: Tenant Panel Replacement Faces

*Approximate dimensions



Scale: 1" = 1'-0"

| TENANT PANEL | | |
|--------------|--------------------|---|
| ITEM | DESCRIPTION | |
| 1 | TENANT PANEL | 3/16" WHITE POLYCARBONATE W/ 1ST SURFACE GRAPHICS APPLIED |
| 2 | TENANT PANEL VINYL | 3M VINYL 3630-156 VIVID GREEN BACKGROUND |



ALL SIZES TO BE FIELD VERIFIED

Customer Approval: _____ Signed by: _____ Date: _____
 Landlord Approval: ALFETH NBBR Date: 11/6/2024

IDENTICOM SIGN SOLUTIONS
 24657 Halsted Road
 Farmington Hills, MI 48335
 T.248.344.9590 | F.248.946.4198
 info@identicomsigns.com
 www.identicomsigns.com

UL
 SIGNS TO BE MANUFACTURED IN ACCORDANCE WITH ARTICLE 405 OF THE NATIONAL ELECTRICAL CODE AND/OR OTHER APPLICABLE LOCAL CODES. THIS INCLUDES PROPER GROUNDING AND BONDING OF SIGNS. SIGN WILL BEAR UL LABEL(S).

This is an original artwork drawing created by Identicom Sign Solutions, LLC ©. It is part of a planned project and is not to be exhibited, copied or reproduced in any fashion without the written permission of Identicom Sign Solutions, LLC ©
 ELECTRICAL CONNECTION TO BE DONE BY OTHERS

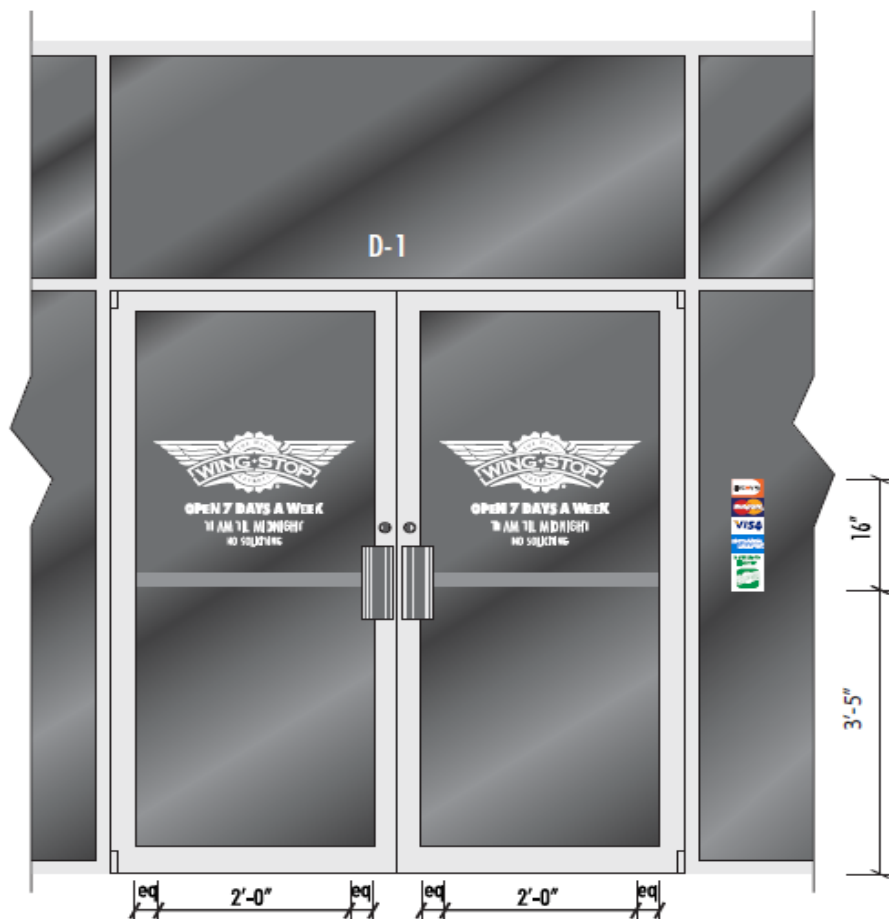
Disclaimer - This drawing is conceptual and was prepared to show approximate location, arrangement, size and color of signage. It is Subject to change and not intended to replace the use of construction documents and/or actual field dimensions.

| | |
|--|------------------------|
| DATE: 11/05/24 | DRAWN BY: JEM |
| PROJECT: Wing Stop AA012 | APPROVED BY: J. Maiuri |
| ADDRESS: 2101 S. Claiborne Ave., Suite D-1 | PROJECT NO.: |
| City/State: New Orleans, LA 70125 | DRAWING #: D5040 |

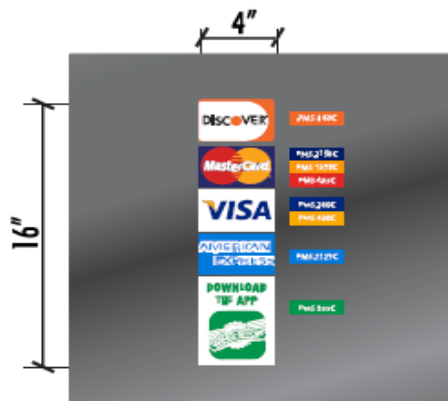


Wing Stop AA012 | New Orleans, LA

WINDOW GRAPHICS



QTY 1: Address Vinyl



QTY 1: Payment Window Vinyl



QTY 2: Hours Door Window Vinyl

| VINYL GRAPHICS | | |
|----------------|------------------|---|
| ITEM | | DESCRIPTION |
| 1 | VINYL GRAPHICS | 3M-7725-10 WHITE VINYL GRAPHICS APPLIED ON 2ND SURFACE TO GLASS |
| 2 | PAYMENT GRAPHICS | 3M VINYL DIGITALLY PRINTED PAYMENT GRAPHICS APPLIED ON 2ND SURFACE TO GLASS |



ALL SIZES TO BE FIELD VERIFIED

Customer Approval Signed by: HAFFETH MBBR Date: 11/6/2024
 Landlord Approval Date: _____

