


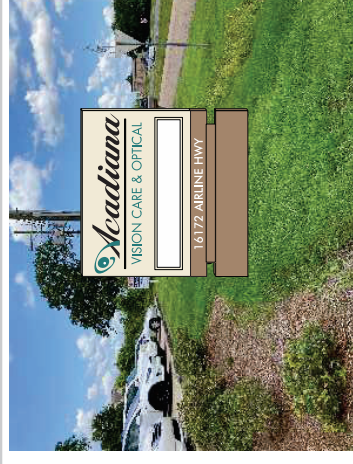
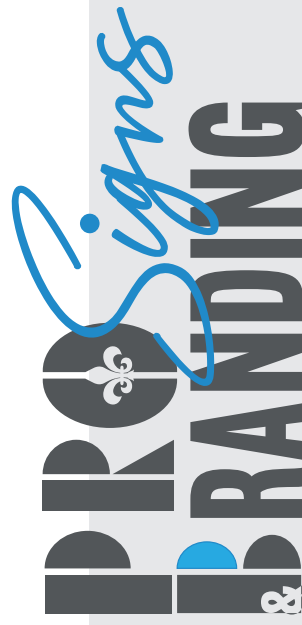
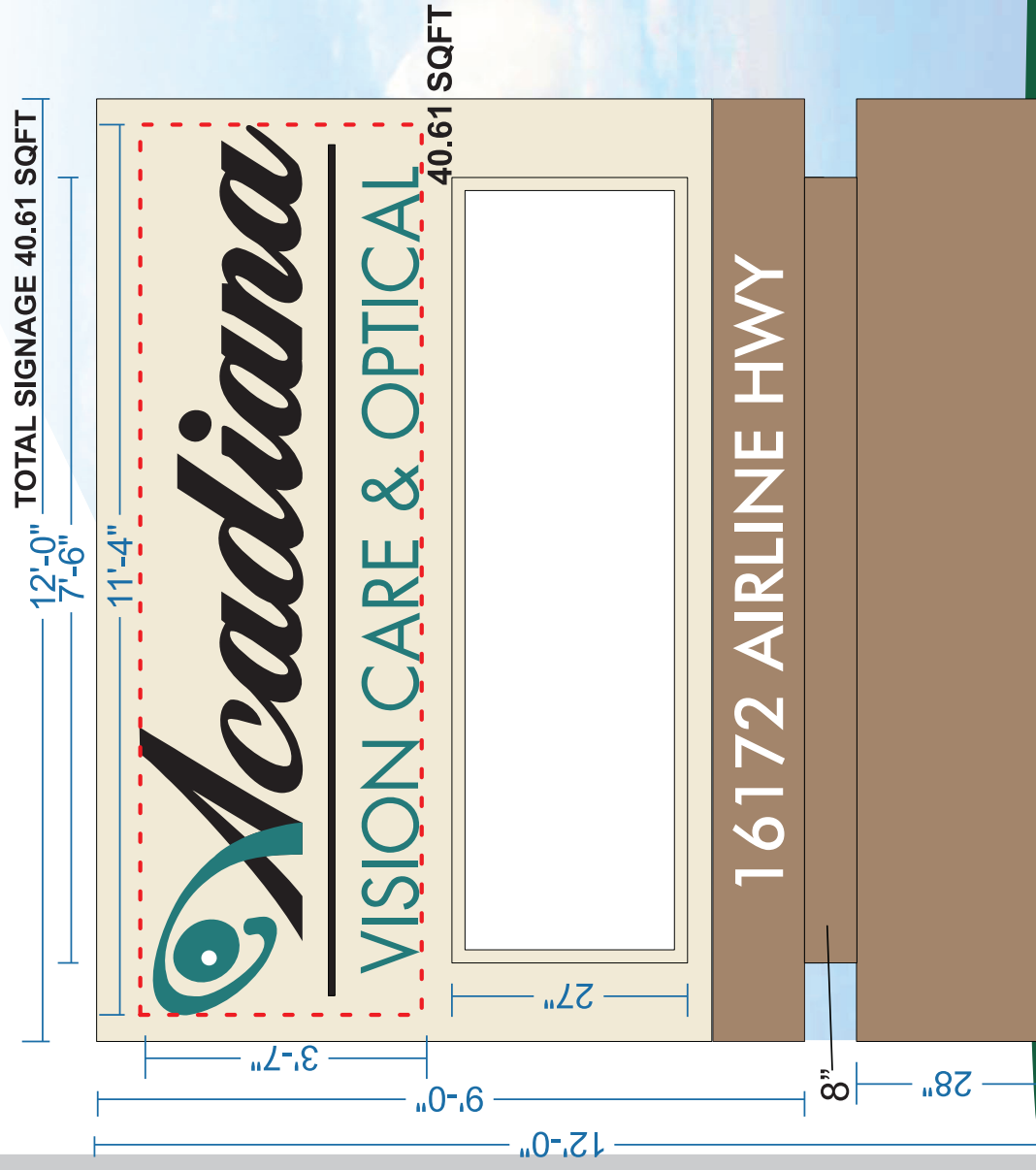


-  N260-5 (Distant Land)
-  P460-7 (Caribbean Current)
-  S320-1 (Farm House)

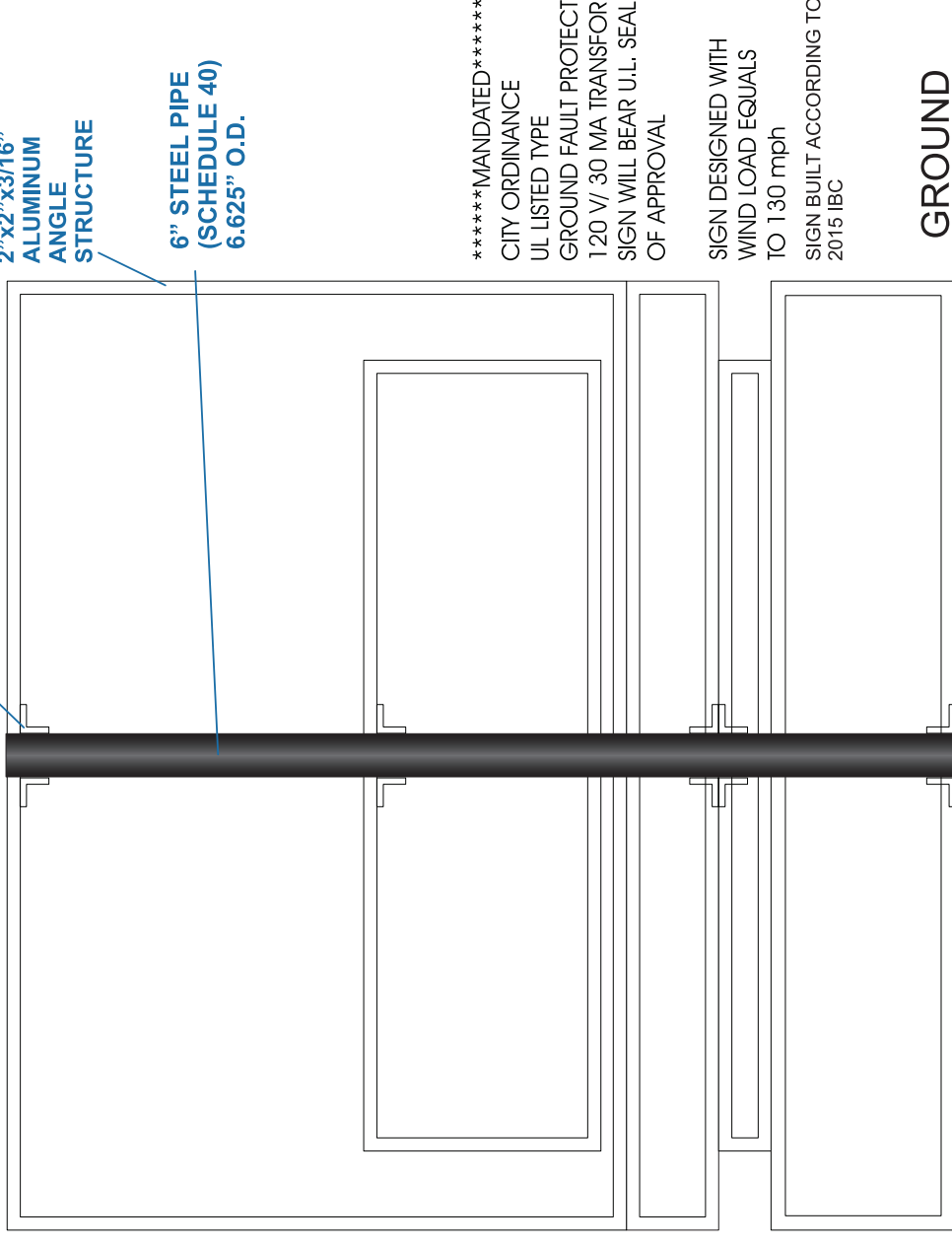


Mfg & Install (1) Non-Illuminated Double Sided Monument Sign
 Fabricated Aluminum Cabinet With 1/2" Sintra Letters Painted Black,
 S320-1 (Farm House) and N260-5.
 Copy & Bar Will Be 1/2" Sintra Painted Black,
 S320-1 (Farm House) and P460-7 (Caribbean Current).
 Stud Mounted onto Cabinet.
 New Steel Pipe & Foundation Included.

WELD STEEL PIPE
 TO 2"x2"x 3/16"
 STEEL ANGLES

2"x2"x3/16"
 ALUMINUM
 ANGLE
 STRUCTURE

6" STEEL PIPE
 (SCHEDULE 40)
 6.625" O.D.



*****MANDATED*****
 CITY ORDINANCE
 UL LISTED TYPE
 GROUND FAULT PROTECTION
 120 V/ 30 MA TRANSFORMER
 SIGN WILL BEAR U.L. SEAL
 OF APPROVAL

SIGN DESIGNED WITH
 WIND LOAD EQUALS
 TO 130 mph
 SIGN BUILT ACCORDING TO
 2015 IBC



2' X 5FT
 CIRCULAR
 FOUNDATION
 3000 PSI
 CONCRETE

DAMMON
 ENGINEERING, INC.
 LOUISIANA & MISSISSIPPI

Job Name: Acadiana Designer: Trevor Norris Sketch #: 21-0626- P2r3

Location: 16172 Airline Hwy Suite# A Salesman: Dai Nguyen Scale: 3/8" = 1'-0"

Pratirville, LA 70769 Contact Person: _____ Contact Number: _____

THESE PLANS AND SPECIFICATIONS HAVE BEEN PREPARED BY ME OR UNDER MY SUPERVISION. TO THE BEST OF MY KNOWLEDGE AND BELIEF THEY CONFORM TO ALL CITY REQUIREMENTS. I AM NOT GENERALLY ADMINISTERING THE WORK. ALL ELECTRIC SIGNS UL LISTED/ WINDLOAD OF 130 MPH THIS DRAWING IS THE PROPERTY OF PRO SIGNS & BRANDING AND CANNOT BE DUPLICATED WITHOUT PERMISSION.