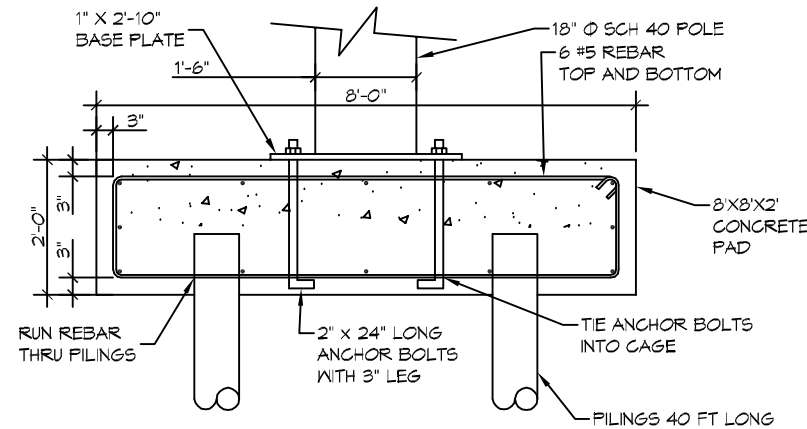


PILING NOTES

1. PILES ARE TO BE CLASS B MODIFIED AND ALL PILES ARE TO BE 40 FT. IN LENGTH WITH A 8 INCH TIP AND 12" BUTT.
2. ALL PILES SHALL BE PRESSURE-TREATED ROUND TIMBER PILES CONFORMING TO ASTM D25.
2. DESIGN LOAD = 6 TONS PER PILE.
3. NO FIELD SUPERVISION OR INSPECTION PROVIDED UNDER THIS SEAL UNLESS OTHERWISE NOTED.
4. PILE LAYOUT MAY BE MODIFIED DUE TO ACTUAL DRIVING CONDITIONS. ENGINEER TO BE NOTIFIED ON ANY MODIFICATION.
6. A PILE BLOW COUNT LOG OF ALL PILES IS TO BE SUBMITTED TO THE ENGINEER OF RECORD. FAILURE TO SUBMIT SAID LOG WILL RELEASE THE ENGINEER OF ALL RESPONSIBILITY.
7. CONTRACTOR IS RESPONSIBLE FOR THE COMPARISON & VERIFICATION OF PILE LAYOUT DIMENSIONS WITH MOST RECENT ARCHITECTURAL DRAWINGS, ASSURING THAT PILES DO FALL WITHIN LIMITS OF THE DESIGN
8. USE DROP HAMMER OR SINGLE ACTING AIR HAMMER DELIVERING 7,500 FT-LBS OF ENERGY PER BLOW, RAM WEIGHT OF DROP HAMMER SHALL NOT EXCEED 2,500 TO 3,000 LBS AND THE DROP SHOULD NOT EXCEED 3 FT., AT MINIMUM OF 25 BLOWS PER FOOT. IF THE DROP EXCEEDS 3 FT., CONTACT ENGINEER FOR INSTRUCTIONS.

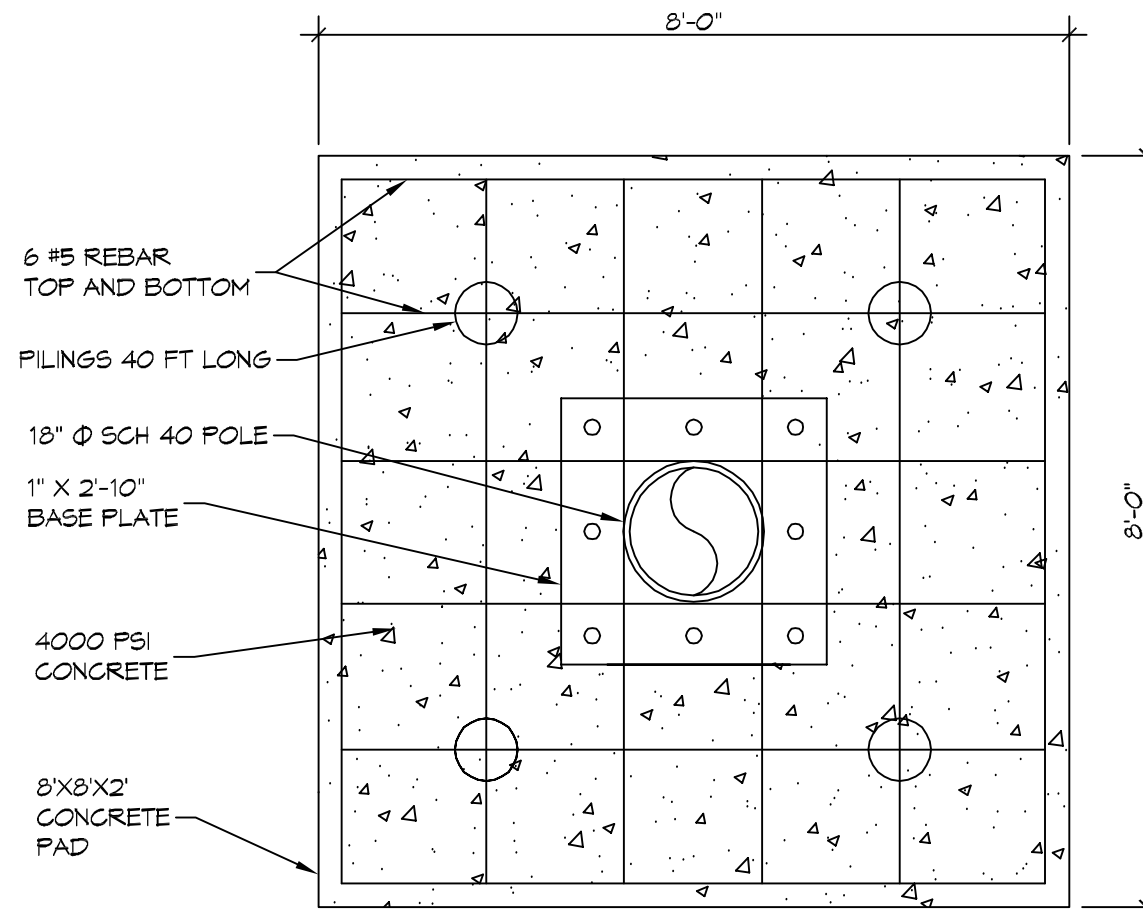
NOTES

1. ALL CONVENTIONAL REINFORCING STEEL SHALL MEET ASTM-A615 (GRADE 60)
2. DO NOT WELD ON REINFORCING STEEL. SECURELY CROSS-TIE THE VERTICAL AND SPIRAL REINFORCEMENT WITH DOUBLE WIRE. SUPPORT OR HOLD DOWN THE CAGE SO THAT THE VERTICAL DISPLACEMENT DURING CONCRETE PLACEMENT AND CASING EXTRACTION DOES NOT EXCEED 6 IN.



1 POLE FOUNDATION PLAN
SCALE: 3/8" = 1'-0"

SECTION



2 FOUNDATION PLAN
SCALE: 1/2" = 1'-0"

PLAN

DAMMON
ENGINEERING, INC.
LOUISIANA & MISSISSIPPI

Chief Engineer Brian Wistich, PE
554 Old Spanish Trail
Slidell, LA 70468
www.dammonengineering.com
info@dammonengineering.com
PH: 985.649.9822

#	DESCRIPTION	DATE



FOUNDATION FOR SIGN
BROTHERS SIGN
THE BROTHERS SIGN COMPANY
TERRY TOWN, LA

JOB NO: 2018 DATE: 09-01-2018
DRAWN BY: CJD CHECKED BY: BAW

SHEET TITLE:
SIGN FOUNDATION

DRAWING NUMBER:

SK-1

SHEET No: #1 of #1