

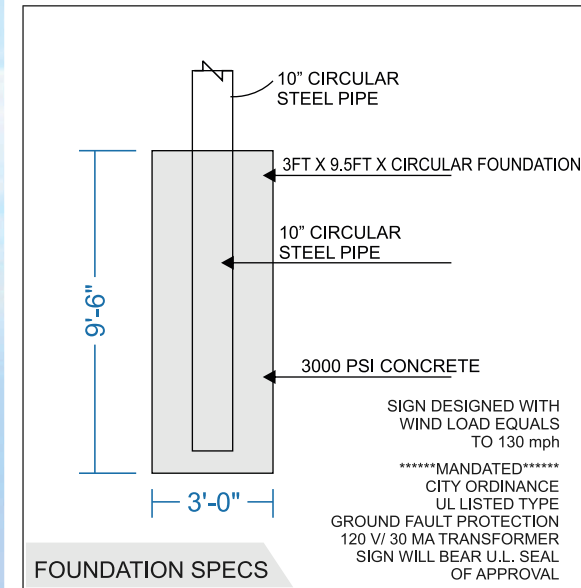
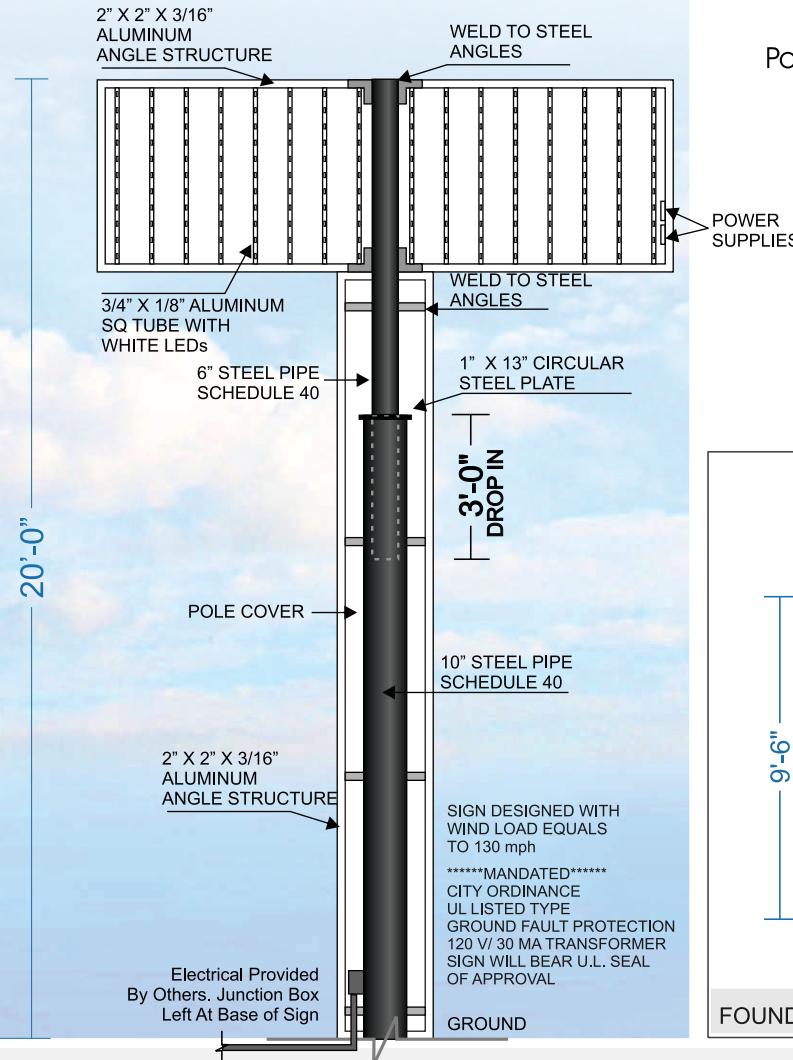
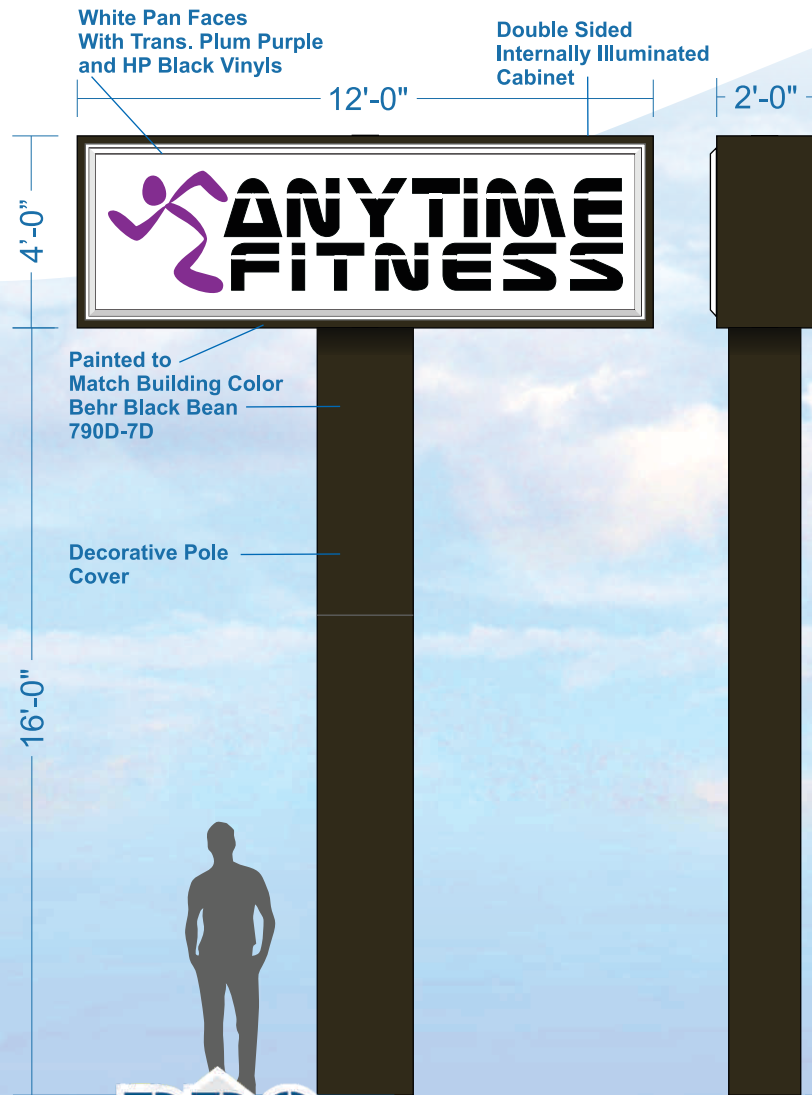
Mfg & Install (1) Double Sided, Internally Illuminated Pole Sign.

Cabinet: Fabricated Aluminum Cabinet With 2" x 2" x 3/16" Aluminum Angle Structure & .063 Aluminum Skin.  
 Face: White Pan Faces With Trans. Plum Purple & HP Black Vinyls  
 Lighting: Internally Illuminated With White LEDs

Pole Cover: 2" x 2" x 3/16" Angle Structure With .063 Aluminum Skin.

Sign to be Painted to Match Building. Behr Black Bean 790D-7D

New Steel Pipes & Foundation Included Per Engineering Specs.



- Behr Black Bean 790D-7D
- White
- Plum Purple
- Black



**Dammon Engineering**  
 554 Old Spanish Trail  
 Slidell, LA 70458  
 (985-649-5832)

5ft Setback From Right of Way  
 or 20ft From Edge of Pavement  
 or Roadway



1310 Carroll St.  
 Kenner, La. 70062  
 Office: 504.467.5205  
 Fax: 504.467.5206  
 www.PROSIGNSOLA.com

Job Name: Anytime Fitness Designer: Monica M Tymon Sketch #: 18-0803-P1  
 Location: 36533 C Breaud Rd Salesman: Chris Nguyen Scale: 1/4" = 1'-0"  
Prairieville, LA Contact Person: \_\_\_\_\_ Contact Number: \_\_\_\_\_

THESE PLANS AND SPECIFICATIONS HAVE BEEN PREPARED BY ME OR UNDER MY SUPERVISION. TO THE BEST OF MY KNOWLEDGE AND BELIEF THEY CONFORM TO ALL CITY REQUIREMENTS. I AM NOT GENERALLY ADMINISTERING THE WORK. ALL ELECTRIC SIGNS UL LISTED/ WINDLOAD OF 130 MPH THIS DRAWING IS THE PROPERTY OF PRO SIGNS & GRAPHICS AND CANNOT BE DUPLICATED WITHOUT PERMISSION.