

FILE NAME: J:\Projects\1000\1000_0100\1000_0100_P101 - 1st Floor Plumbing Rev.dwg - Plot Date: 8/20/25, 9:17:41 AM
 PLOT DATE: 8/20/25, 9:17:41 AM
 PLOT SCALE: 3/32"=1'-0"
 PLOT SHEET: 1 OF 1

GENERAL PLUMBING NOTES

1. PLUMBING LINES SHOWN ARE DRAWN DIAGRAMMATIC IN NATURE AND REPRESENT CONCEPTUAL ROUTING ONLY. CONTRACTOR IS RESPONSIBLE FOR FIELD VERIFICATION OF ALL ACTUAL CONDITIONS.
2. PROVIDE ALL LABOR, MATERIAL, TRANSPORTATION, SUPERVISION, CLEAN-UP, SERVICES, AND EQUIPMENT FOR A COMPLETE OPERATING SYSTEM. THE SYSTEM SHALL INCLUDE HOT AND COLD WATER PIPING, SEWER AND VENT PIPING, INSULATION, WATER HEATER, HANGERS, VALVES, SUPPORTS WITHOUT ANY RESTRICTIONS TO VOLUME, CUT AND PATCH AS REQUIRED TO INSTALL PIPES.
3. ALL WORK AND MATERIAL SHALL CONFORM STRICTLY TO THE LATEST LOCAL CITY, PARISH, STATE AND NATIONAL GOVERNING CODES. MUST MEET LA STATE PLUMBING CODE 2013 REQUIREMENTS.
4. CONTRACTOR IS TO FIELD VERIFY ALL EXISTING UTILITY LOCATIONS, ELEVATIONS AND SIZES PRIOR TO COMMENCING ANY WORK. CONTRACTOR SHALL PAY NECESSARY FEES FOR THE UTILITIES CONNECTIONS.
5. CONTRACTOR IS RESPONSIBLE TO VERIFY THE EXISTING INVERTS AND SET NEW INVERTS OF SEWERAGE AND DRAINAGE PIPES.
6. SEWERAGE LINES 3-INCH AND SMALLER SHALL BE SLOPED 1/4" PER FOOT AND LINES 4-INCH AND LARGER SHALL BE 1/8" PER FOOT.
7. TEST ALL PIPING AT REQUIRED PRESSURE.
8. ALL PLUMBING SHALL BE CLOSELY COORDINATED WITH STRUCTURAL, MECHANICAL SYSTEM AND ELECTRICAL SYSTEMS TO INSURE NO TRADES WILL CONFLICT WITH EACH OTHER.
9. DO NOT SCALE DRAWINGS. SEE ARCHITECTURAL DRAWINGS FOR EXACT LOCATIONS OF DOORS, WINDOWS, WALLS, FIXTURES, ETC.
10. ALL WATER MAINS AND PIPING NOT SHOWN FOR CLARITY, ALL LOCATIONS FIELD VERIFIED.
11. DOMESTIC HOT AND COLD WATER PIPING AND FITTINGS UNDER SLAB SHALL BE ASTM B88 COPPER WATER TUBE, TYPE K, SOFT ANNEALED. NO JOINTS SHALL BE ALLOWED UNDER THE SLAB.
12. DOMESTIC WATER PIPING AND FITTINGS ABOVE THE SLAB SHALL BE ASTM B88 COPPER WATER TUBE, TYPE L. HARD DRAWN WITH COPPER PRESSURE TYPE FITTINGS, ANSI B16.22. THE JOINTS SHALL BE SOLDERED TYPE USING ASTM B32, ALLOY GRADE #5A (95-5) SOLDER.
13. SOIL, WASTE, VENT PIPING AND FITTINGS ABOVE THE SLAB SHALL BE SERVICE WEIGHT CAST IRON PIPE WITH BELL AND SPIGOT ENDS AND ONE PIECE NEOPRENE INSERT TYPE GASKET. USE PVC SCHEDULE 40 OR ABS DWV PIPES AND FITTINGS WHERE PERMITTED BY CODE.
14. ALL WATER PIPING AND FITTINGS ABOVE THE FLOOR SHALL BE INSULATED WITH 1/2" THICK FIBERGLASS INSULATION AND JACKET.
15. ALL ELECTRICAL, MECHANICAL AND PLUMBING ELEMENTS PENETRATING FIRE PARTITIONS SHALL BE FIRE CAULKED. (PENETRATIONS THROUGH RATED CONSTRUCTION SHALL BE SEALED WITH A MATERIAL CAPABLE OF PREVENTING THE PASSAGE OF FLAMES AND HOT GASES WHEN TESTED IN ACCORDANCE WITH ASTM-E814.)
16. SEE ROOF PLAN FOR PLUMBING ROOF PENETRATIONS. ROUTE VENT PIPES IN ATTIC AS NECESSARY.
17. ALL VENTS THROUGH ROOF (VTR) SHALL BE LOCATED A MINIMUM OF 10'-0" FROM ANY MECHANICAL OR NATURAL AIR INTAKE.

PLUMBING ABBREVIATIONS

HS	HAND SINK	MS	MOP SINK
LAV	LAVATORY	NH	WATER HEATER (PLACED IN ATTIC)
WC	WATER CLOSET		

LEGEND

SYMBOL	DESCRIPTION
---S---	SEWER LINE
---V---	VENT PIPE
⊕	ELBOUN UP
⊖	FLOOR DRAIN
---CO---	CLEAN OUT

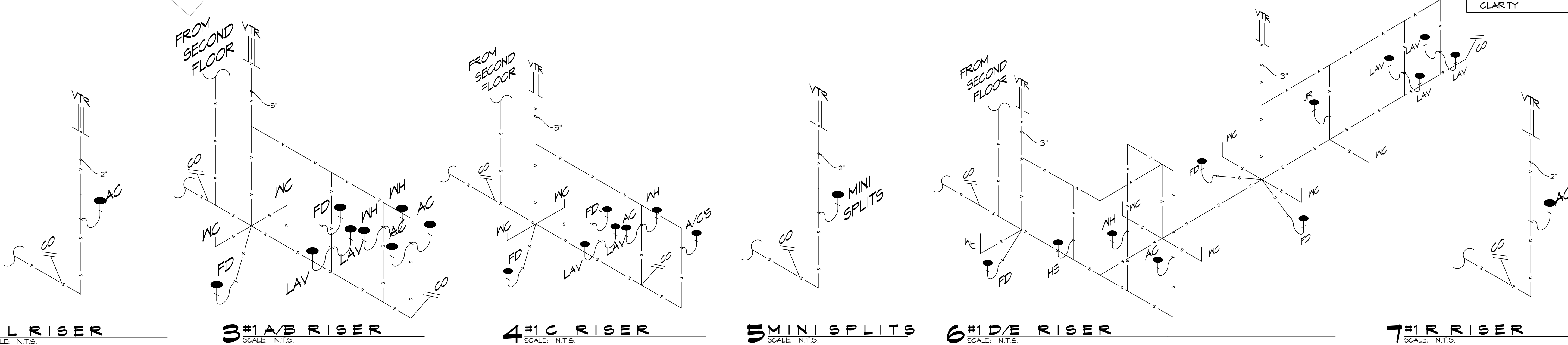
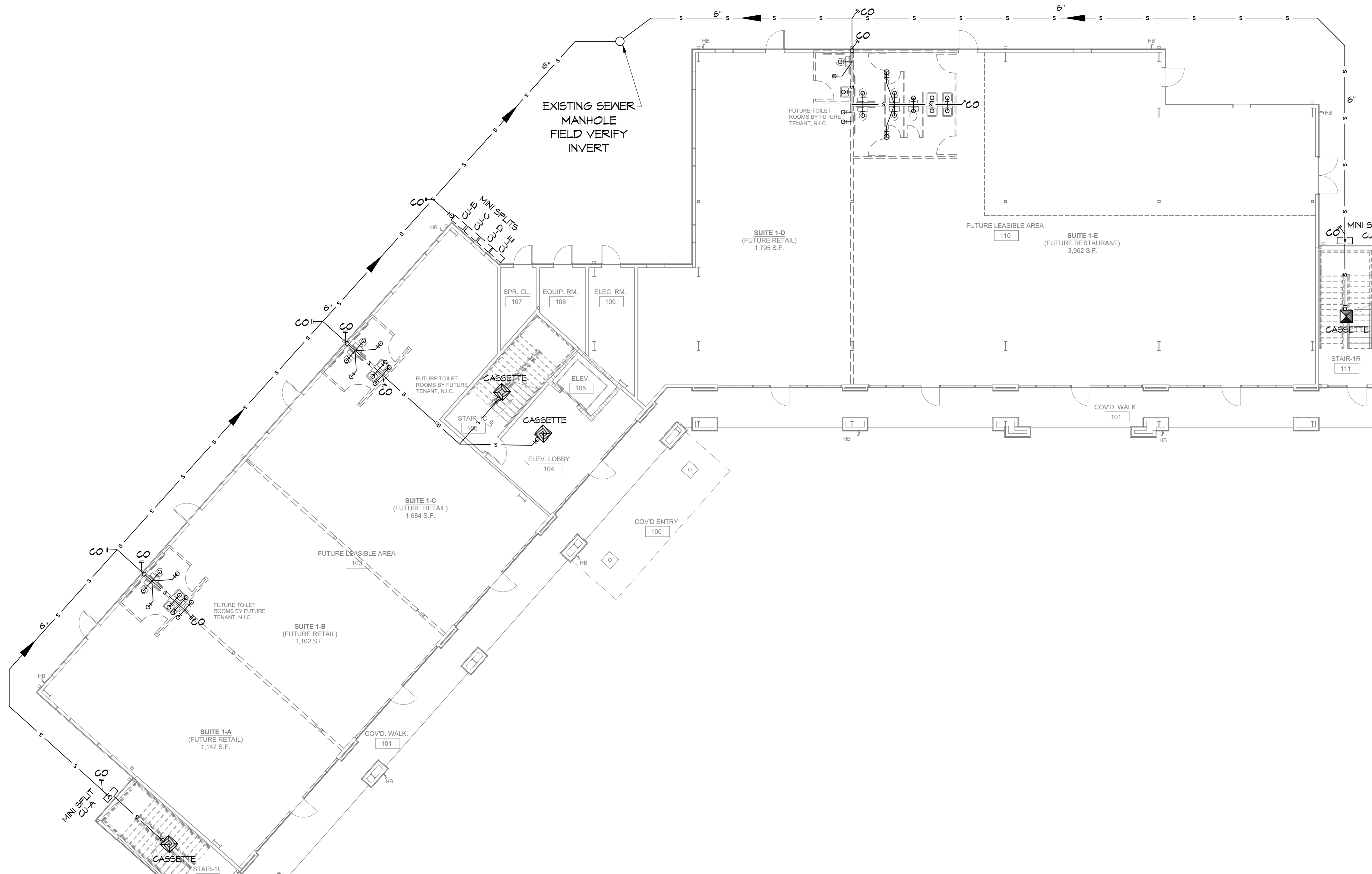
PLUMBING FIXTURE SCHEDULE

MK	DESCRIPTION	TYPE	ROUGH - IN - SIZE				NOTES
			WASTE	VENT	COLD	HOT	
WC	WATER CLOSET	VALVE	4"	3"	1-1/2"	-	3
UR	URINAL	VALVE	3"	2"	3/4"	-	3
LAV	LAVATORY	WALL HUNG	2"	2"	3/4"	3/4"	1,2,3
SH	SHOWER	-	2"	2"	3/4"	3/4"	5
FD	FLOOR DRAIN	-	3"	2"	-	-	4
HS	HAND SINK	-	3"	2"	3/4"	3/4"	-
MS	MOP SINK	-	3"	2"	3/4"	3/4"	-
NH	WATER HEATER	-	3/4"	2"	3/4"	3/4"	-
AHU	AIR HANDLER DRAIN	-	3/4"	2"	-	-	-

NOTES:

1. INSULATE PIPING FOR HANDICAP FIXTURE.
2. PROVIDE CHAIR CARRIER FOR WALL HUNG FIXTURE.
3. HANDICAP FIXTURE
4. INSTALL CONTINUOUS DRIP VALVE ON ALL FLOOR DRAINS.
5. PROVIDE ASSE 1016 COMPLIANT VALVE - FOR ALL SHOWERS.
6. PROVIDE ASSE 1070 COMPLIANT MIXING VALVE - FOR ALL LAVATORIES/SINKS.

NOTE: ALL PLUMBING IS DRAWN DIAGRAMMATICALLY FOR CLARITY



DAMMON ENGINEERING, INC.
 LOUISIANA & MISSISSIPPI
 Chief Engineer: Brian Mistich, PE
 554 Old Spanish Trail
 Slidell, LA 70588
 www.dammonengineering.com
 info@dammonengineering.com
 PH: 985.649.5832

DATE: _____

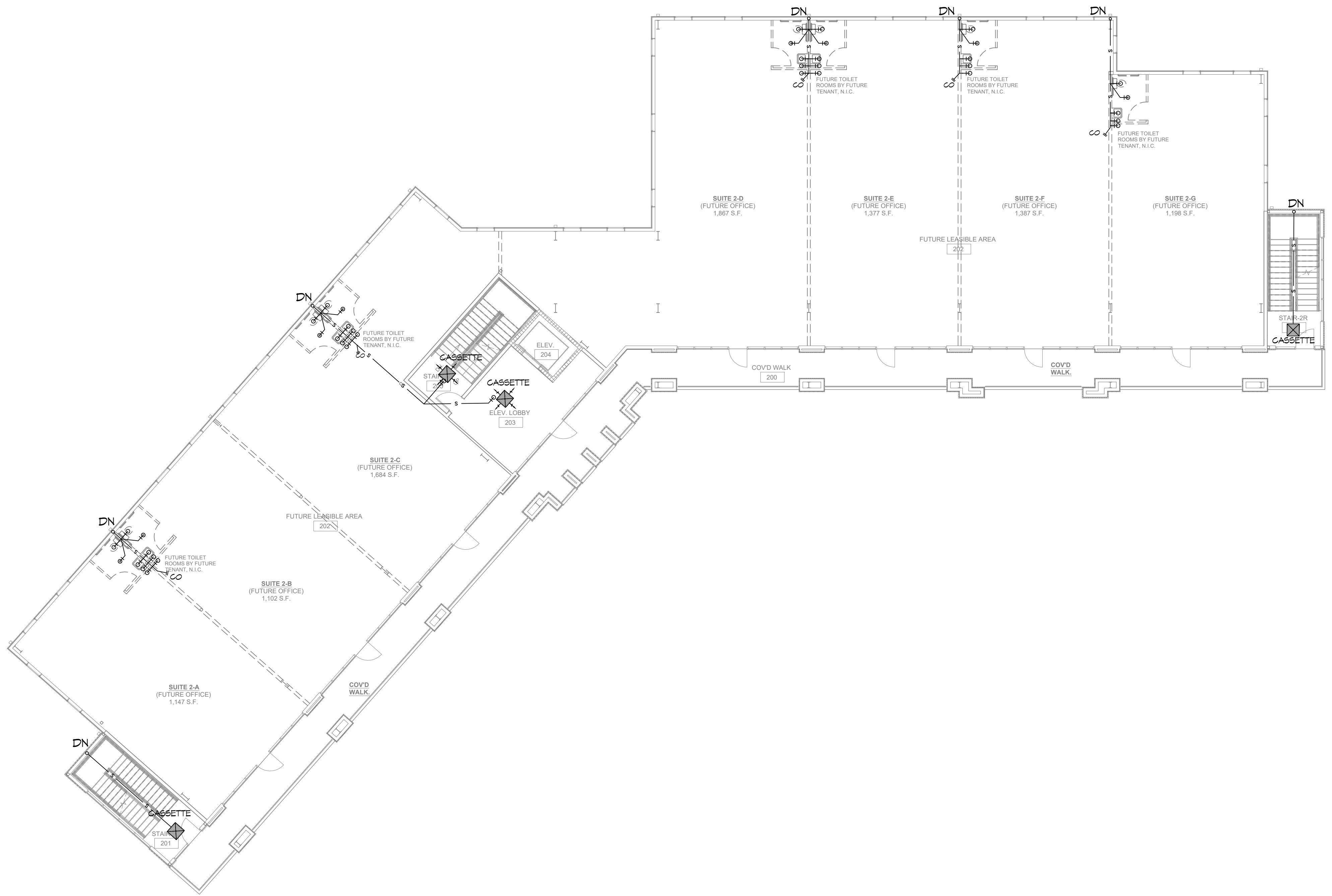
#	DESCRIPTION

SEAL: _____

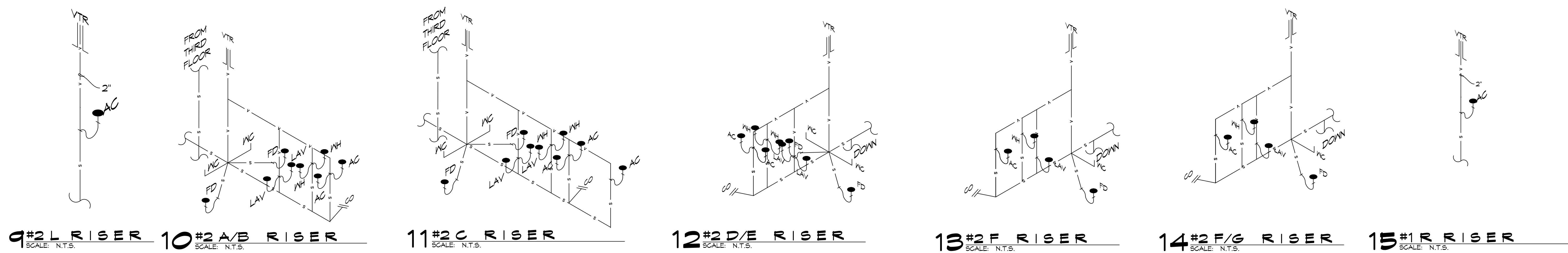
MIXED USE DEVELOPMENT
 1-10 SOUTH SERVICE ROAD
 METAIRIE LOUISIANA
 JOB NO: 01-08-2025
 DATE: 01-08-2025
 DRAWN BY: CKD
 CHECKED BY: BAKI

SHEET TITLE:
FIRST FLOOR PLUMBING PLAN AND RISER DIAGRAM
 DRAWING NUMBER:
P101
 SHEET No. 1 of 15

FILE NAME: J:_Office\Drawn_Beam\DWG\Civil\General\0102 - Second Floor Plumbing Rev.dwg PLOT DATE: 8/20/25 9:18:39 AM



8 SECOND FLOOR PLUMBING PLAN
SCALE: 3/8"=1'-0"



9#2 L RISER SCALE: N.T.S. **10#2 A/B RISER** SCALE: N.T.S. **11#2 C RISER** SCALE: N.T.S. **12#2 D/E RISER** SCALE: N.T.S. **13#2 F RISER** SCALE: N.T.S. **14#2 F/G RISER** SCALE: N.T.S. **15#1 R RISER** SCALE: N.T.S.

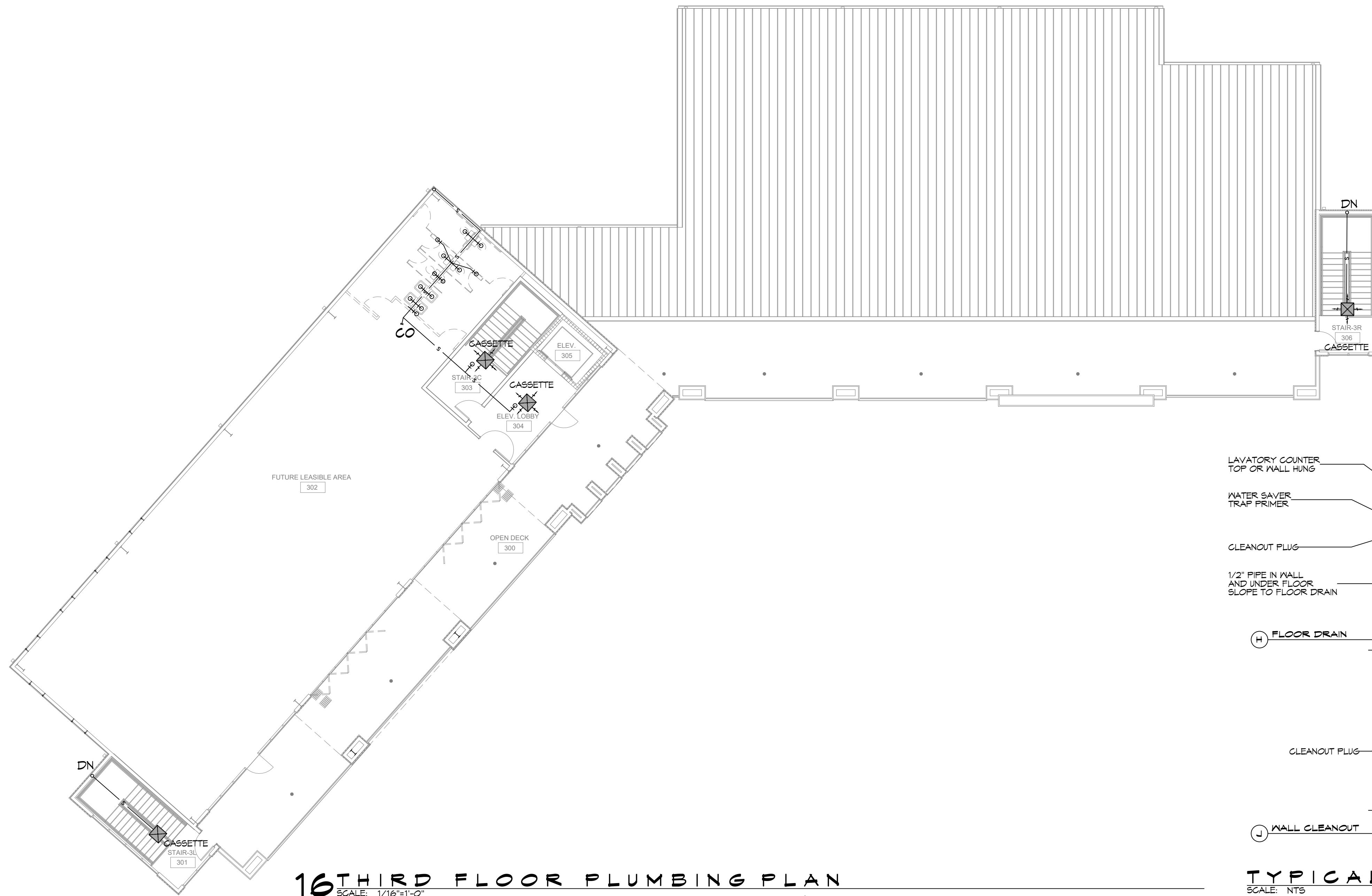
DAMMON
ENGINEERING, INC.
LOUISIANA & MISSISSIPPI
Chief Engineer: Brian Mistich, PE
554 Old Spanish Trail
Stidell, LA 70458
www.dammonengineering.com
info@dammonengineering.com
PH: 985.649.5832

#	DESCRIPTION	DATE

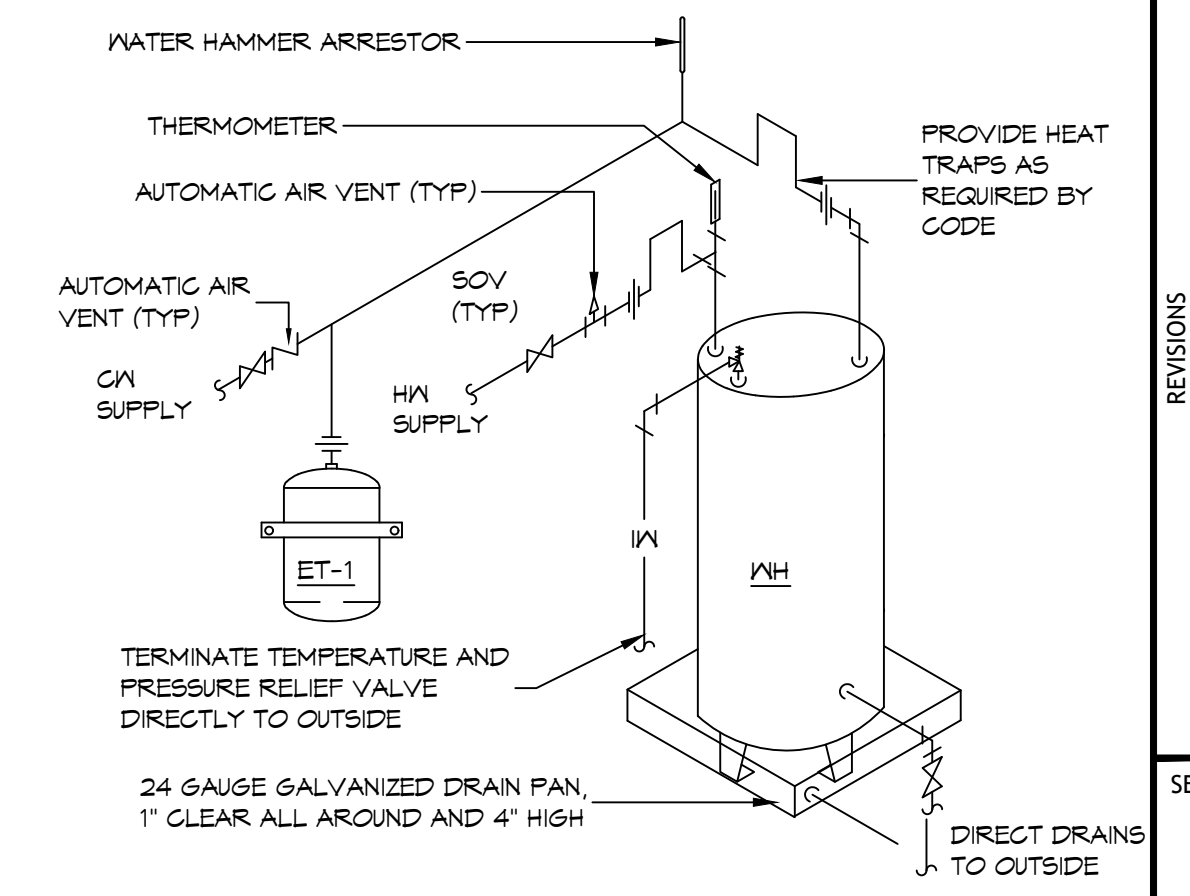
MIXED USE DEVELOPMENT
1-10 SOUTH SERVICE ROAD
METAIRIE LOUISIANA
JOB NO: 01-08-2025
DATE: 01-08-2025
DRAWN BY: BAXI
CHECKED BY: CKD

SHEET TITLE:
SECOND FLOOR PLUMBING PLAN AND RISER DIAGRAM
DRAWING NUMBER:
P102
SHEET No: 2 of 15

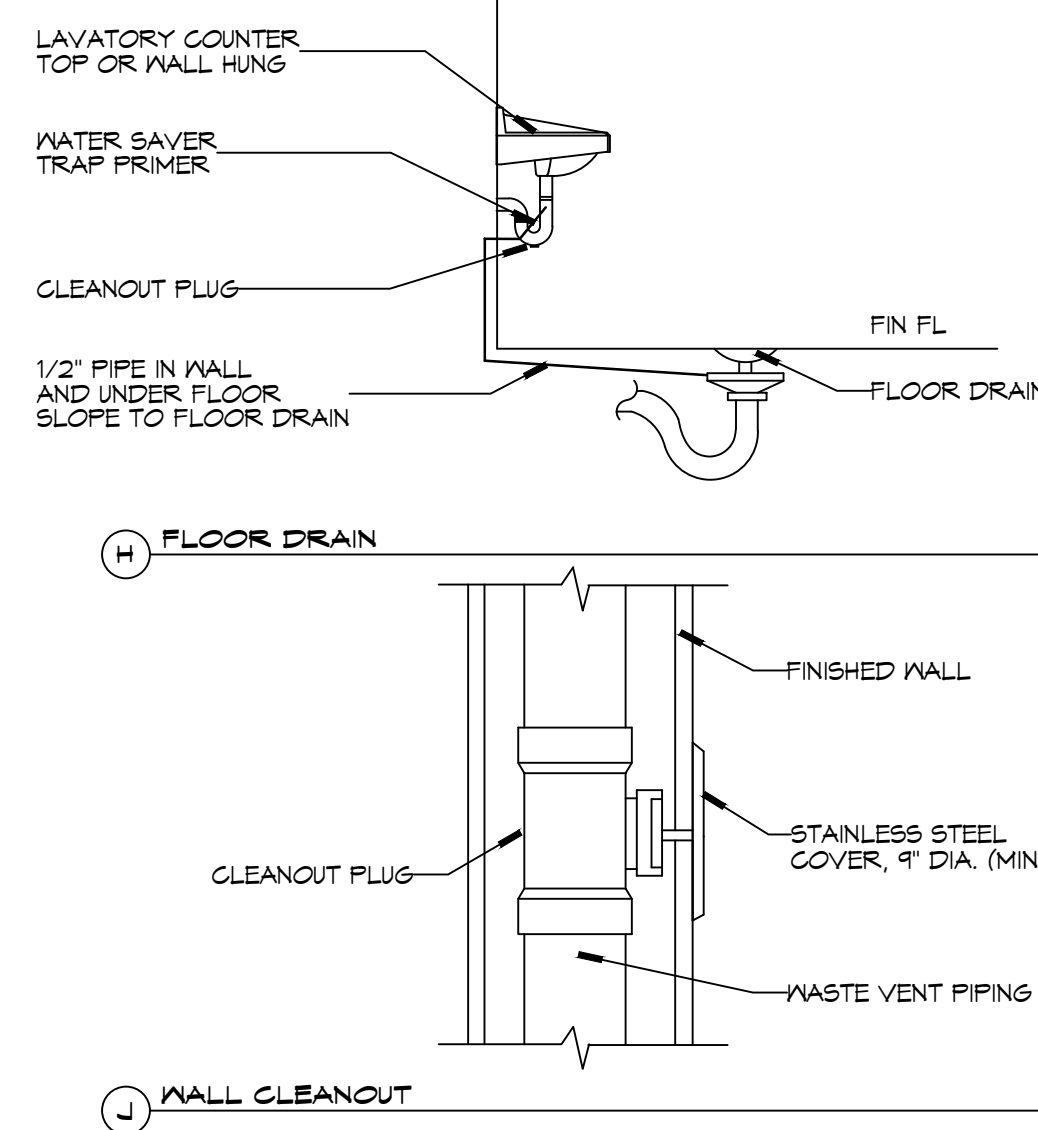
FILE NAME: J:\17 - Office\Utility Drawn\Plan\Drawings\0103 - Third Floor Plumbing Plan.dwg - Plot Date: 8/20/25 9:18:15 AM



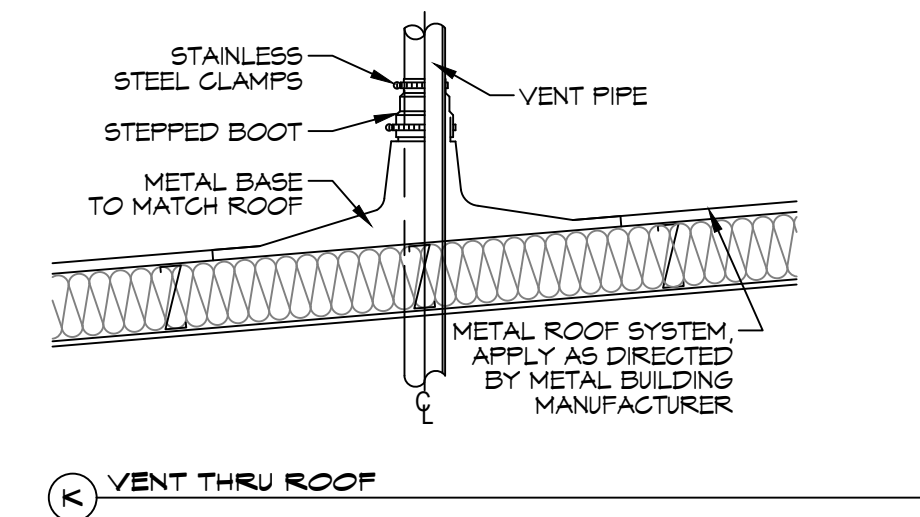
16 THIRD FLOOR PLUMBING PLAN
SCALE: 1/16" = 1'-0"



NOTES:
1. A WATERTIGHT PAN WITH 1" DRAIN SHALL BE PROVIDED UNDER WATER HEATER.



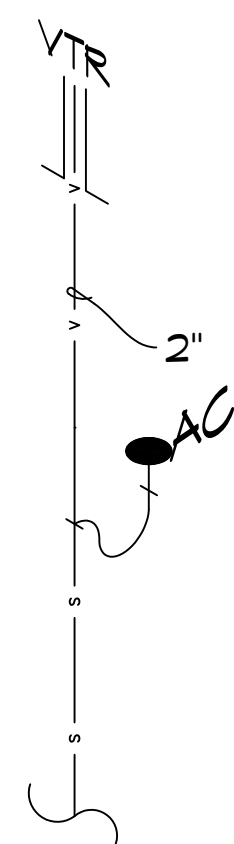
TYPICAL DETAILS
SCALE: N.T.S.



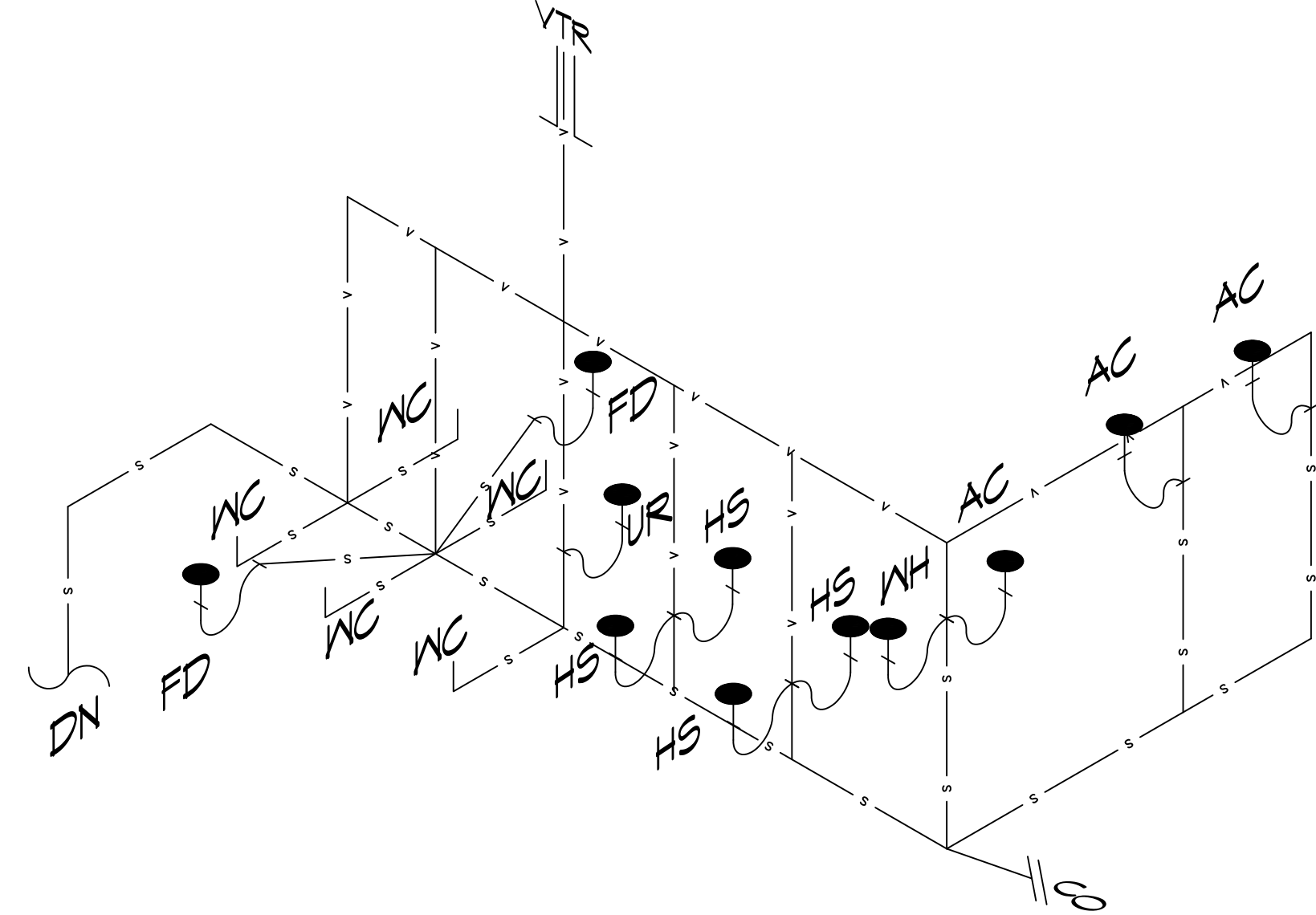
K VENT THRU ROOF

#	DESCRIPTION	DATE

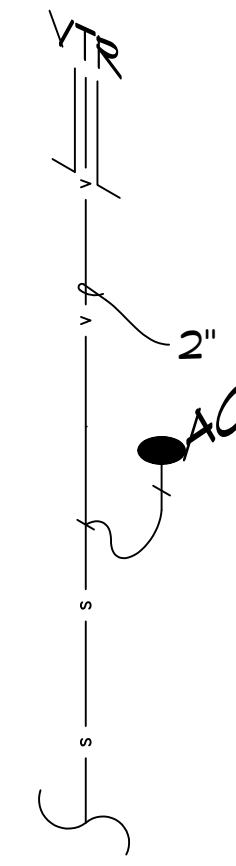
SEAL:	



17#3 L RISER
SCALE: N.T.S.



18 FUTURE AREA 302 RISER
SCALE: N.T.S.



19#3 R RISER
SCALE: N.T.S.

FILE NAME: \\c:\projects\2024\2024_01_01\2024_01_01 - Proj - First Floor Mechanical Plan.dwg, DATE: 01-02-2024, 11:53 AM

GENERAL HVAC NOTES

1. CONCEALED DUCTWORK TO BE GALVANIZED SHEET METAL WRAPPED WITH FIBROUS GLASS DUCT WRAP WITH FSK VAPOR BARRIER, MIN R-6. INSTALLED PER SMACNA STANDARDS. DUCT WORK IMMEDIATELY DOWNSTREAM FROM RTU SHALL BE LINED FOR SOUND ATTENUATION.
2. EXPOSED DUCTWORK TO BE GALVANIZED SHEET METAL LINED WITH FIBROUS GLASS DUCT LINER, MIN R-6. INSTALLED PER SMACNA STANDARDS.
3. ROUND FLEXIBLE DUCT TO BE UL-181, CLASS 1, AIR DUCT MATERIALS.
4. DUCT SIZES SHOWN ARE CLEAR INSIDE DIMENSIONS.
5. IN ALL SYSTEMS OVER 2000 CFM AND LESS THAN 15,000 CFM, SMOKE DETECTORS SHALL BE INSTALLED IN ACCORDANCE WITH NFPA 12E IN THE RETURN DUCT DOWNSTREAM OF THE AIR HANDLING UNIT AND ALL FILTERS TO AUTOMATICALLY STOP THE FAN.
6. PROVIDE UL LISTED 125 F° FIRESTAT IN RETURN AIR OF EACH SYSTEM UNDER 2000 CFM TO SHUT DOWN THE FAN IN THE EVENT OF FIRE.
7. PROVIDE UL RATED FIRE DAMPERS WHERE REQUIRED AT ALL DUCT PENETRATIONS OF FIRE-RATED ASSEMBLIES AND WHERE REQUIRED BY CODE, INCLUDING OUTSIDE AIR INTAKES AND EXHAUST FANS.
8. CONDENSATE DRAINS TO BE PVC PIPE RUN TO PLUMBERS P-TRAP WITHIN FIVE FEET OF AIR HANDLING UNITS.
9. ALL AIR HANDLING SYSTEMS TO BE BALANCED TO ASSURE PROPER AIR FLOWS PER PLANS.
10. ALL THERMOSTATS TO BE AUTOMATIC CHANGEOVER WITH HEAT SWITCH.
11. EXHAUST FAN SHALL BE CONTROLLED BY A SWITCH ON THE WALL IN THE SAME LOCATION AS LIGHT SWITCH(S). PROVIDE BACK DRAFT DAMPER.
12. PROVIDE AND INSTALL WATER PROOF GRILLE VENT IN PROPER ROOF LOCATION FOR PLUMBING FIXTURE EXHAUST.
13. ALL SUPPLY AIR VENTS SHALL BE EQUIPPED WITH AIR CONTROL DAMPERS AT THE REGISTER.
14. LOCATE OUTDOOR UNITS AS SHOWN ON ARCHITECTURAL DRAWINGS.
15. REFRIGERANT LINES SHALL BE SIZED BY UNIT MANUFACTURER AND INSTALLED ACCORDING TO MANUFACTURER'S INSTRUCTIONS.
16. FRESH AIR SHALL BE SUPPLIED TO EACH AIR HANDLER THROUGH EXTERIOR WALL DUCT SUPPLIED WITH A CONTROL DAMPER.
17. ALL ELECTRICAL, MECHANICAL, AND PLUMBING PENETRATING FIRE WALLS SHALL BE FIRE CAULKED. (PENETRATIONS THROUGH RATED CONSTRUCTION SHALL BE SEALED WITH A MATERIAL CAPABLE OF PREVENTING THE PASSAGE OF FLAMES AND HOT GASES WHEN TESTED IN ACCORDANCE WITH ASTM-E8-14).
18. ALL MECHANICAL SYMBOLS ARE DRAWN DIAGRAMMATICALLY. CONTRACTOR TO VERIFY WITH OWNER LOCATIONS OF VENTS, DAMPERS, REGISTERS, ETC.
19. FLEXIBLE DUCTWORK LENGTH NOT TO EXCEED 12'-0". SUPPORT FLEX DUCT TO PREVENT SAGGING.
20. REFER TO REFLECTED CEILING PLAN FOR FINAL GRILLE AND DIFFUSER LOCATIONS AND COORDINATE AS REQUIRED.
21. FINAL LOCATION OF TEMPERATURE CONTROLS TO BE COORDINATED WITH OWNER AT JOB SITE.
22. PROVIDE AND INSTALL SMOKE DETECTORS AS APPROVED BY LOCAL AHJ'S. PLACE NEAR R/A AND S/A OPENINGS OF AHU AND PROVIDE, WITH ACCESS PANEL, WIRING BY ELECTRICAL CONTRACTOR.
23. FRESH AIR INTAKES ARE REQUIRED TO HAVE MOTORIZED OR GRAVITY DAMPERS TO SHUT OFF WHEN SYSTEM IS NOT RUNNING.
24. PROVIDE BIRD SCREENS AT ALL EXTERIOR MECHANICAL PENETRATIONS.
25. COORDINATE WALL MOUNTED THERMOSTAT LOCATIONS WITH ALL OWNER FURNISHED ITEMS EITHER WALL MOUNTED OR FLOOR MOUNTED AGAINST PARTITIONS. REFER TO ARCHITECTURAL DRAWINGS.
26. SEE ROOF PLAN FOR ALL ROOF PENETRATIONS.
27. PROVIDE MIN 18 GA GALVANIZED SHEET METAL TO BLANK-OFF GABLE VENTS WHERE INTAKE/EXHAUST DUCTS OCCUR.

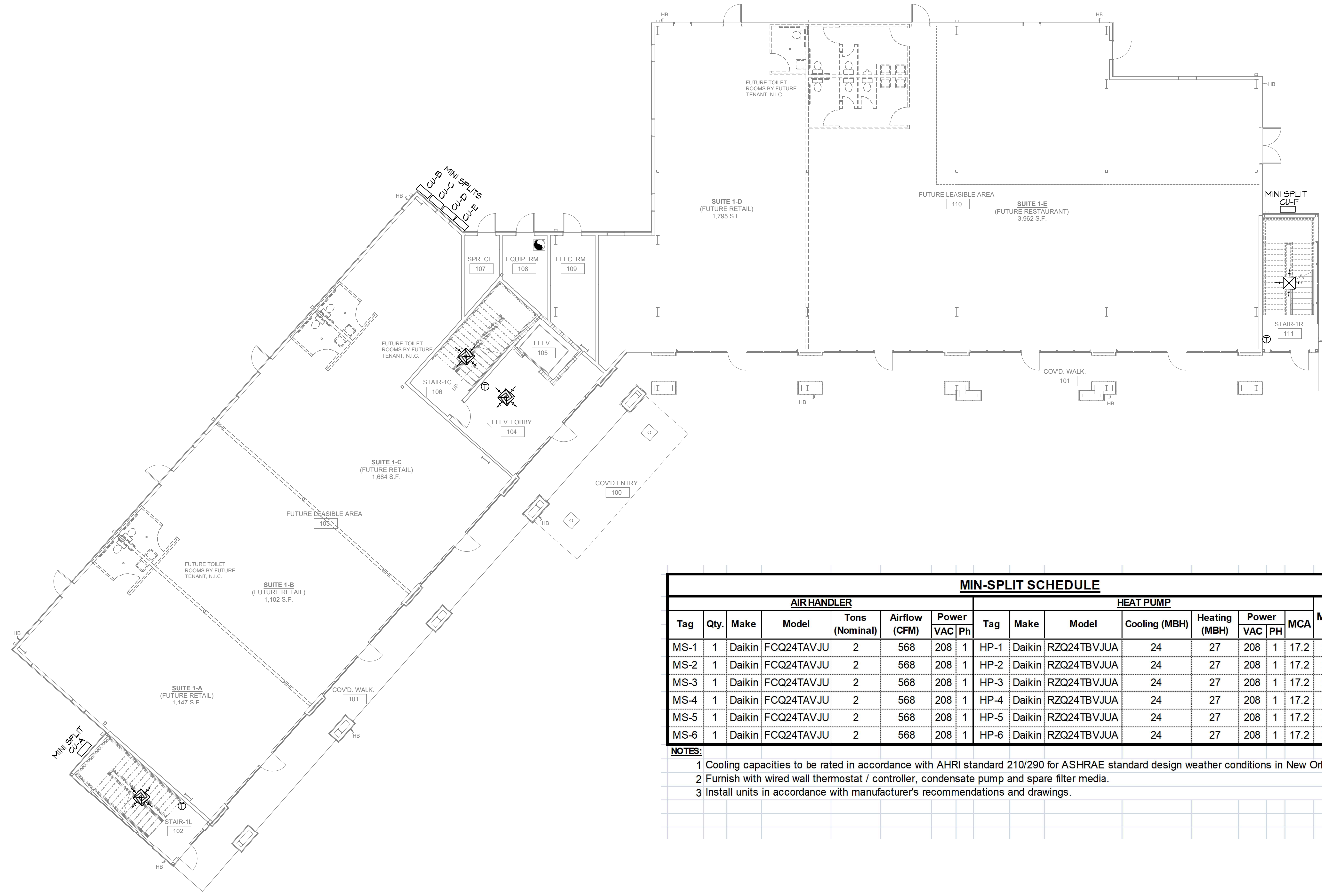
DAMMON ENGINEERING, INC.

LOUISIANA & MISSISSIPPI

www.dammonengineering.com
info@dammonengineering.com
554 Old Spanish Trail
Slidell, LA 70458

#	DATE	REVISIONS	DESCRIPTION

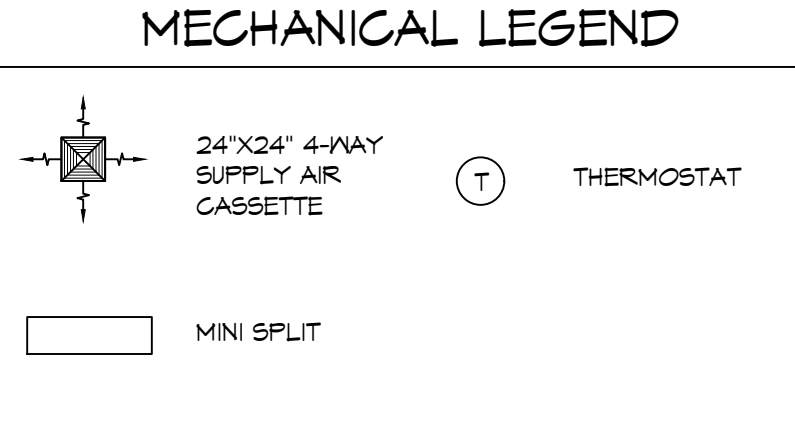
SEAL:



AIR HANDLER									HEAT PUMP									
Tag	Qty.	Make	Model	Tons (Nominal)	Airflow (CFM)	Power VAC	Ph		Tag	Make	Model	Cooling (MBH)	Heating (MBH)	Power VAC	PH	MCA	MOP	Remarks
MS-1	1	Daikin	FCQ24TAVJU	2	568	208	1		HP-1	Daikin	RZQ24TBVJUA	24	27	208	1	17.2	20	1, 2, 3
MS-2	1	Daikin	FCQ24TAVJU	2	568	208	1		HP-2	Daikin	RZQ24TBVJUA	24	27	208	1	17.2	20	1, 2, 3
MS-3	1	Daikin	FCQ24TAVJU	2	568	208	1		HP-3	Daikin	RZQ24TBVJUA	24	27	208	1	17.2	20	1, 2, 3
MS-4	1	Daikin	FCQ24TAVJU	2	568	208	1		HP-4	Daikin	RZQ24TBVJUA	24	27	208	1	17.2	20	1, 2, 3
MS-5	1	Daikin	FCQ24TAVJU	2	568	208	1		HP-5	Daikin	RZQ24TBVJUA	24	27	208	1	17.2	20	1, 2, 3
MS-6	1	Daikin	FCQ24TAVJU	2	568	208	1		HP-6	Daikin	RZQ24TBVJUA	24	27	208	1	17.2	20	1, 2, 3

NOTES:

- 1 Cooling capacities to be rated in accordance with AHRI standard 210/290 for ASHRAE standard design weather conditions in New Orleans, LA.
- 2 Furnish with wired wall thermostat / controller, condensate pump and spare filter media.
- 3 Install units in accordance with manufacturer's recommendations and drawings.



20 FIRST FLOOR MECHANICAL PLAN
SCALE: 1/4"=1'-0"

INDEX DEVELOPMENT

H-10 SOUTH SERVICE ROAD
METairie LOUISIANA
JOB No: 01-06-2025
DRAWN BY: CND
CHECKED BY: EAY

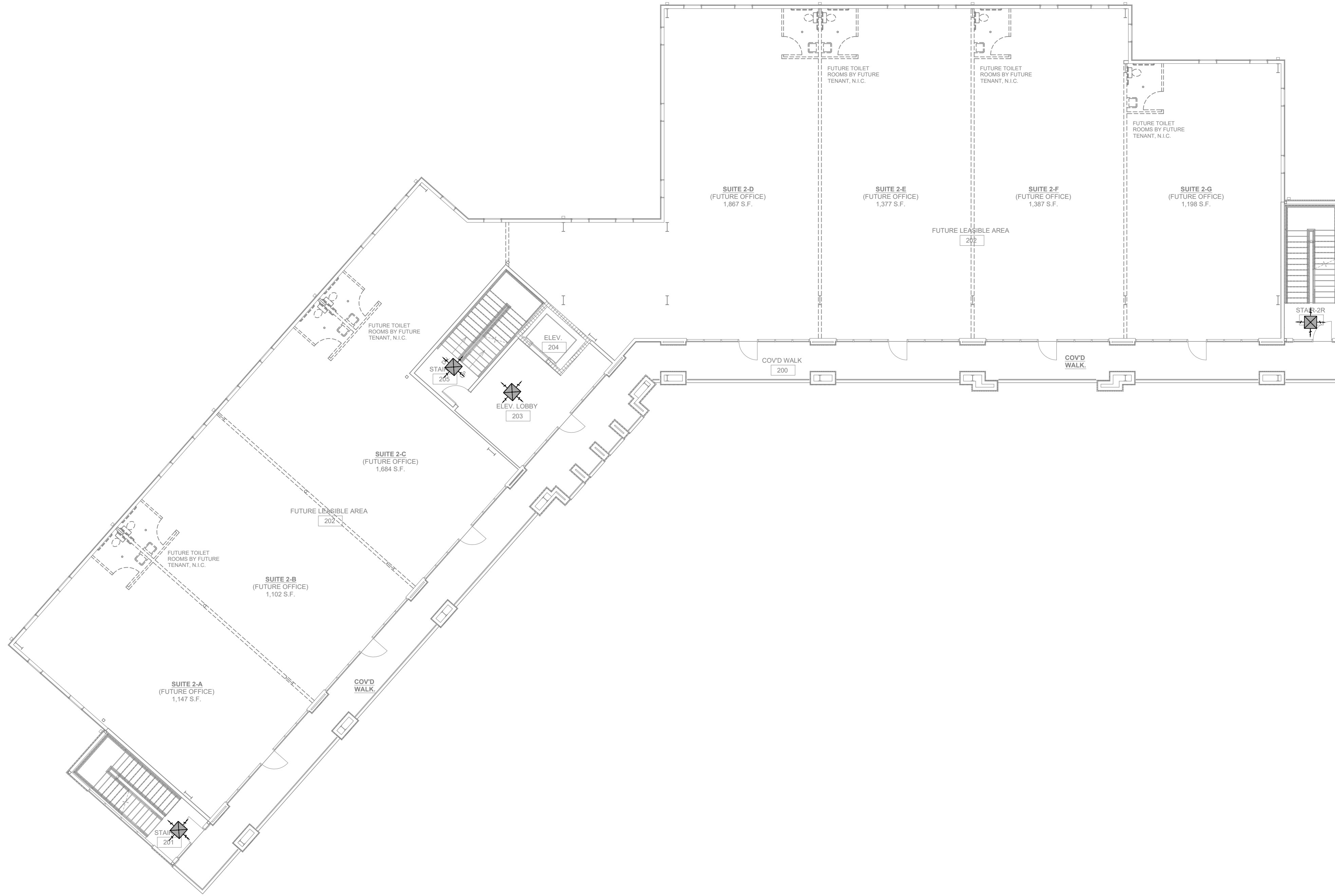
DATE: 01-06-2025

SHEET TITLE:
FIRST FLOOR MECHANICAL PLAN

DRAWING NUMBER:
M101

SHEET No: 4 of 15

E:\MGS_1\1 - Office\Drawings\2nd Floor\2nd Floor Mechanical Plan.dwg, 03/02/2025, 8:11:14 AM



21 SECOND FLOOR MECHANICAL PLAN
SCALE: 3/32"=1'-0"

DAMMON
ENGINEERING, INC.
LOUISIANA & MISSISSIPPI
Chief Engineer: Brian Wirth, PE
554 Old Spanish Trail
Slidell, LA 70458
www.dammonengineering.com
info@dammonengineering.com
PH: 985.649.5832

#	DESCRIPTION	DATE

SEAL:

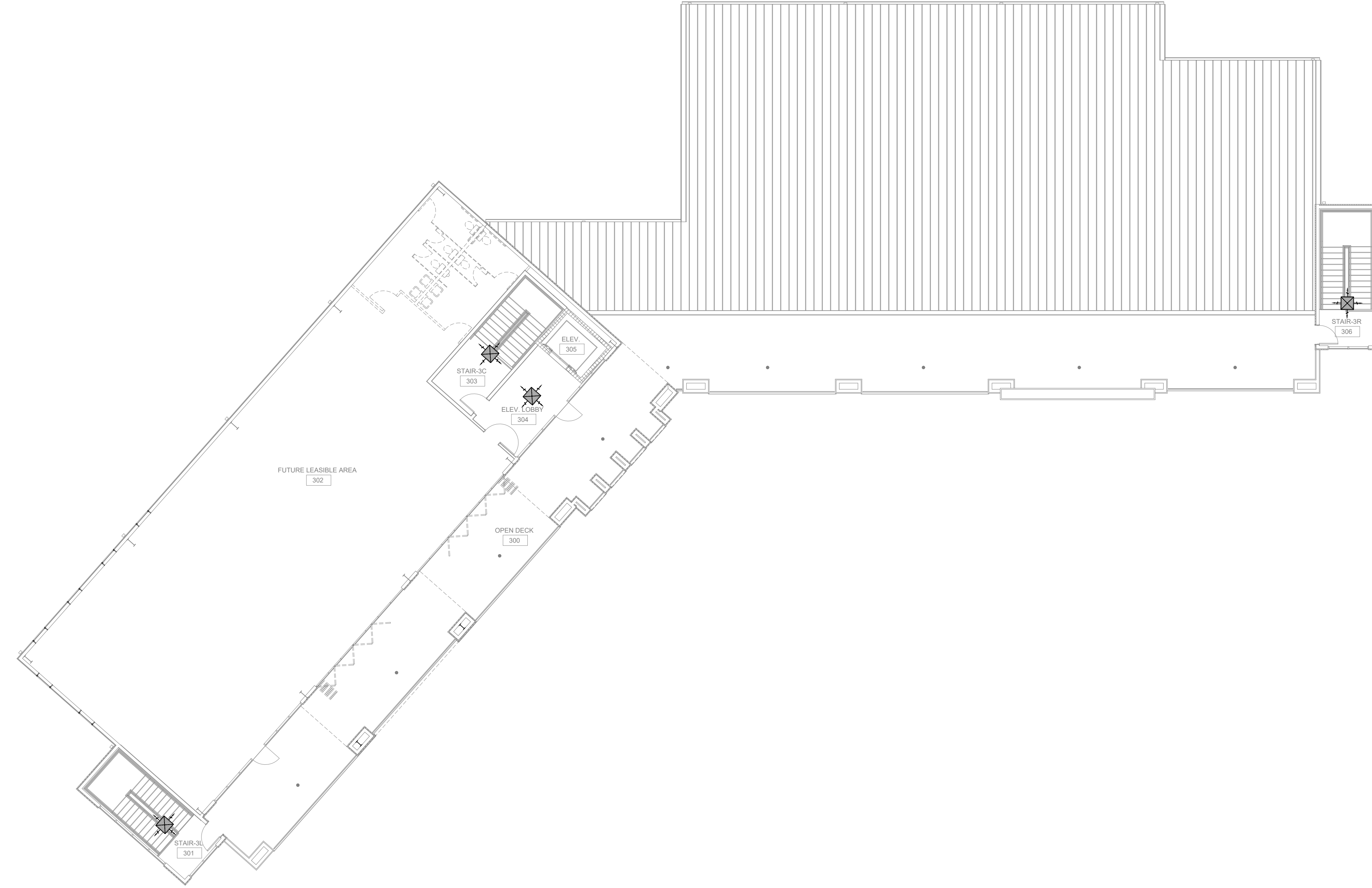
MIXED USE
DEVELOPMENT

110 SOUTH SERVICE ROAD
METairie, LOUISIANA
JOB No: DATE: 01-06-2025
DRAWN BY: CKP CHECKED BY: BAW

SHEET TITLE:
SECOND FLOOR
MECHANICAL PLAN

DRAWING NUMBER:
M102

FILE NAME: \\\ Office\Draws\Bldg\3rd\3rd Corridor Corridor.MXD - Title Floor Mechanical Plan.dwg, 03/25/2025, 9:14:42 AM



22 THIRD FLOOR MECHANICAL PLAN
SCALE: 3/32"=1'-0"

#	DESCRIPTION	REVISIONS	DATE

SEAL:

MIXED USE DEVELOPMENT

110 SOUTH SERVICE ROAD
METairie, LOUISIANA
JOB No: 01-05-2025
DRAWN BY: CKP
CHECKED BY: BAW

DATE: 01-05-2025
JOB No: 01-05-2025
DRAWN BY: CKP
CHECKED BY: BAW

SHEET TITLE:
THIRD FLOOR
MECHANICAL PLAN

DRAWING NUMBER:
M103

SITE LIGHTING

EXTERIOR LIGHTING SHALL BE SHADED OR INWARDLY DIRECTED IN SUCH A MANNER SO THAT NO DIRECT LIGHTING OR GLARE BE CAST BEYOND THE PROPERTY LINE. THE INTENSITY OF SUCH LIGHTING SHALL NOT EXCEED ONE FOOT CANDLE AS MEASURED AT THE ADJUTING PROPERTY LINE.

GENERAL LIGHTING NOTES

1. ALL WORK SHALL COMPLY WITH APPLICABLE NATIONAL, STATE, AND LOCAL CODES, RULES, REGULATIONS, AND REQUIREMENTS OF THE SERVICE UTILITY COMPANY.
2. GENERAL CONTRACTOR SHALL NOTIFY THE ARCHITECT IMMEDIATELY IF ANY CONFLICTS OCCUR BETWEEN LIGHTING AND ANY OTHER TRADE. DO NOT PROCEED WITH INSTALLATION IN THAT AREA UNTIL CONFLICT HAS BEEN RESOLVED TO THE SATISFACTION OF THE ARCHITECT AND ENGINEER.
3. REFER TO ARCHITECTURAL DRAWINGS FOR EXACT LOCATION AND MOUNTING INSTRUCTIONS FOR ALL LIGHT FIXTURES. NOTIFY THE ARCHITECT AND ENGINEER OF ANY DISCREPANCIES BETWEEN THESE PLANS AND THE ARCHITECTURAL PLANS RELATING TO QUANTITY, TYPE AND LOCATION OF DEVICES AND/OR FIXTURES.
4. WHEN SPECIFIC LIGHT FIXTURE HAS BEEN SPECIFIED IN THE FIXTURE SCHEDULE, ELECTRICAL CONTRACTOR SHALL PROVIDE COMPLETE ASSEMBLY INCLUDING ALL PARTS AND HARDWARE TO INSURE PROPER FUNCTIONING FIXTURE.
5. ALL CONDUCTORS SHALL BE A MINIMUM OF #12 AWG UNLESS NOTED OTHERWISE.
6. ALL 120V RUNS LONGER THAN 60 FEET SHALL BE #10 AWG AND 277V RUNS LONGER THAN 150 FEET SHALL BE #10 AWG UNLESS NOTED OTHERWISE.
7. ALL CONDUCTORS SHALL BE COPPER.
8. WHERE CONDUCTOR SIZES ARE NOTED ON DRAWINGS, THAT WIRE SIZE SHALL BE THROUGH THE ENTIRE RUN UNLESS OTHERWISE NOTED.
9. MOUNTED LIGHT SWITCHES 48" AFF UNLESS NOTED OTHERWISE ON ARCHITECTURAL DRAWINGS.
10. WHERE MORE THAN ONE SWITCH OCCURS IN THE SAME LOCATION, THEY SHALL BE INSTALLED IN A GANG TYPE BOX UNDER ONE COVER PLATE. ALL GANGED SWITCHES SHALL HAVE A COMMON SEAMLESS FACEPLATE. EACH MULTI-GANGED BOX SHALL BE NO MORE THAN SIX (6) SWITCHES WIDE. WHERE MORE THAN SIX (6) SWITCHES ARE SHOWN AT ONE (1) LOCATION, ADDITIONAL MULTI-GANGED BOXES SHALL BE STACKED VERTICALLY AND THE WIDTH OF THE MULTI-GANGS SHALL BE AS EVEN AS POSSIBLE.
11. EACH DIMMER SWITCH SHALL HAVE A WATTAGE RATING 25% HIGHER THAN THE TOTAL WATTAGE OF ALL LIGHTS TO BE CONTROLLED BY THE DIMMER. DIMMER SIZES 600, 1000, 1500, AND 2000 WATTS, LUTRON NOVA T-STAR. WHERE SWITCHES ARE GANGED WITH DIMMERS, THE SWITCHES SHALL ALSO BE LUTRON NOVA T-STAR. FLUORESCENT AND LOW VOLTAGE DIMMERS SHALL BE LUTRON NOVA T-STAR.
12. ALL EMERGENCY EXIT LIGHT FIXTURES SHALL HAVE 90 MINUTE BATTERY BACKUP WITH INTEGRAL TEST BUTTON AND SHALL BURN CONTINUOUSLY.
13. ALL FLUORESCENT FIXTURES THAT UTILIZE DOUBLE-ENDED LAMPS AND CONTAIN BALLASTS SHALL BE PROVIDED WITH A DISCONNECTING MEANS IN ACCORDANCE WITH NEC 410.136.

THIS WORK SHALL MEET ALL ELECTRICAL CODES

1. 2020 NATIONAL ELECTRICAL CODE
2. NFPA 70
3. 2021 IECC ENERGY CODE

DAMMON ENGINEERING, INC.
 LOUISIANA & MISSISSIPPI
 www.dammonengineering.com
 info@dammon.com
 PH: 985.649.8832
 Chief Engineer: Brian Misch, PE
 State License No. 17111
 State License No. 17111
 State License No. 17111

#	DESCRIPTION	DATE

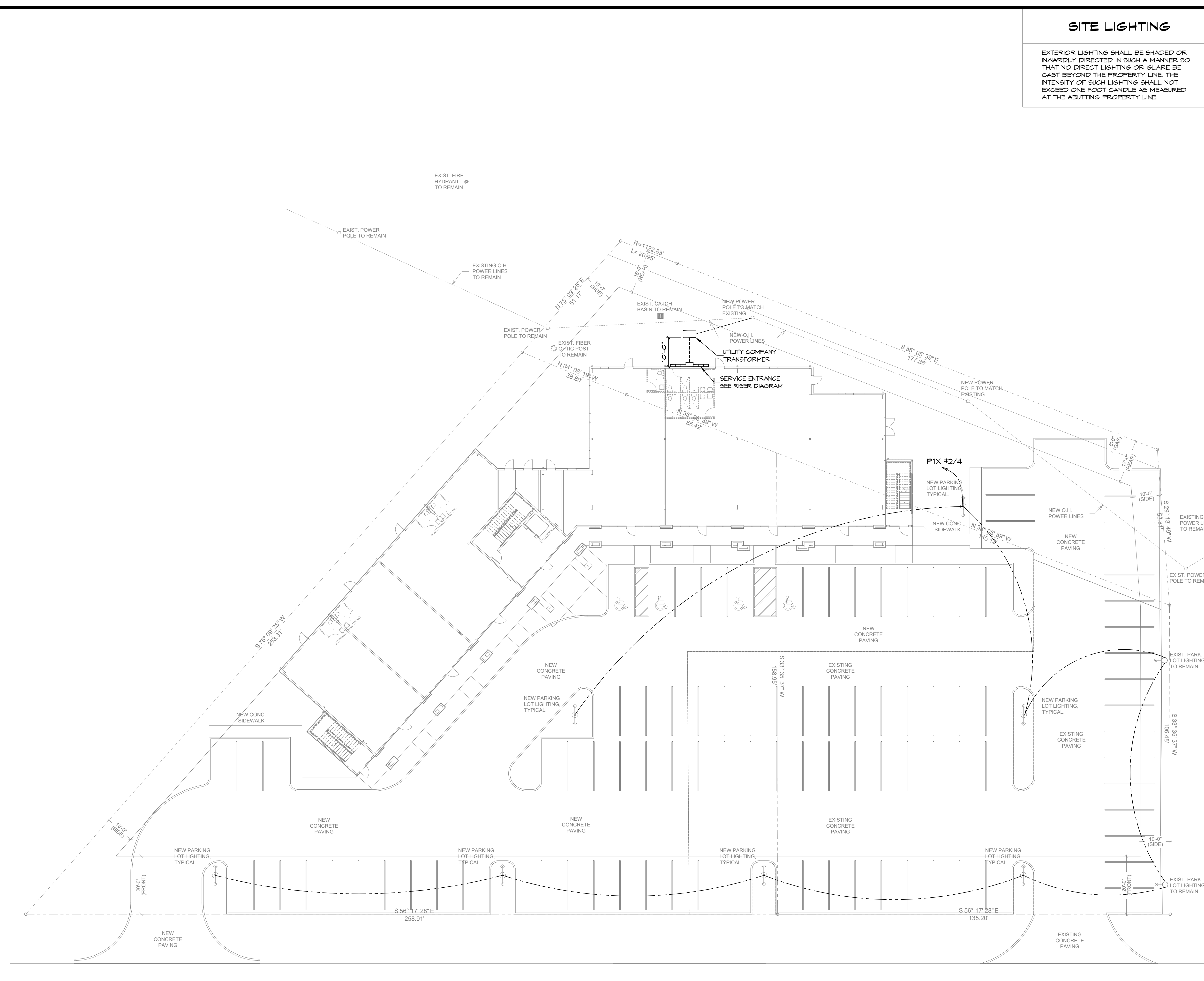
SEAL:

MIXED USE DEVELOPMENT
 1-10 SOUTH SERVICE ROAD
 METAIRIE, LOUISIANA
 JOB No: 01-09-2025
 DATE: 01-09-2025
 DRAWN BY: CKD
 CHECKED BY: RJK
 LICENSE NO. 17111

SHEET TITLE:
SITE LIGHTING PLAN

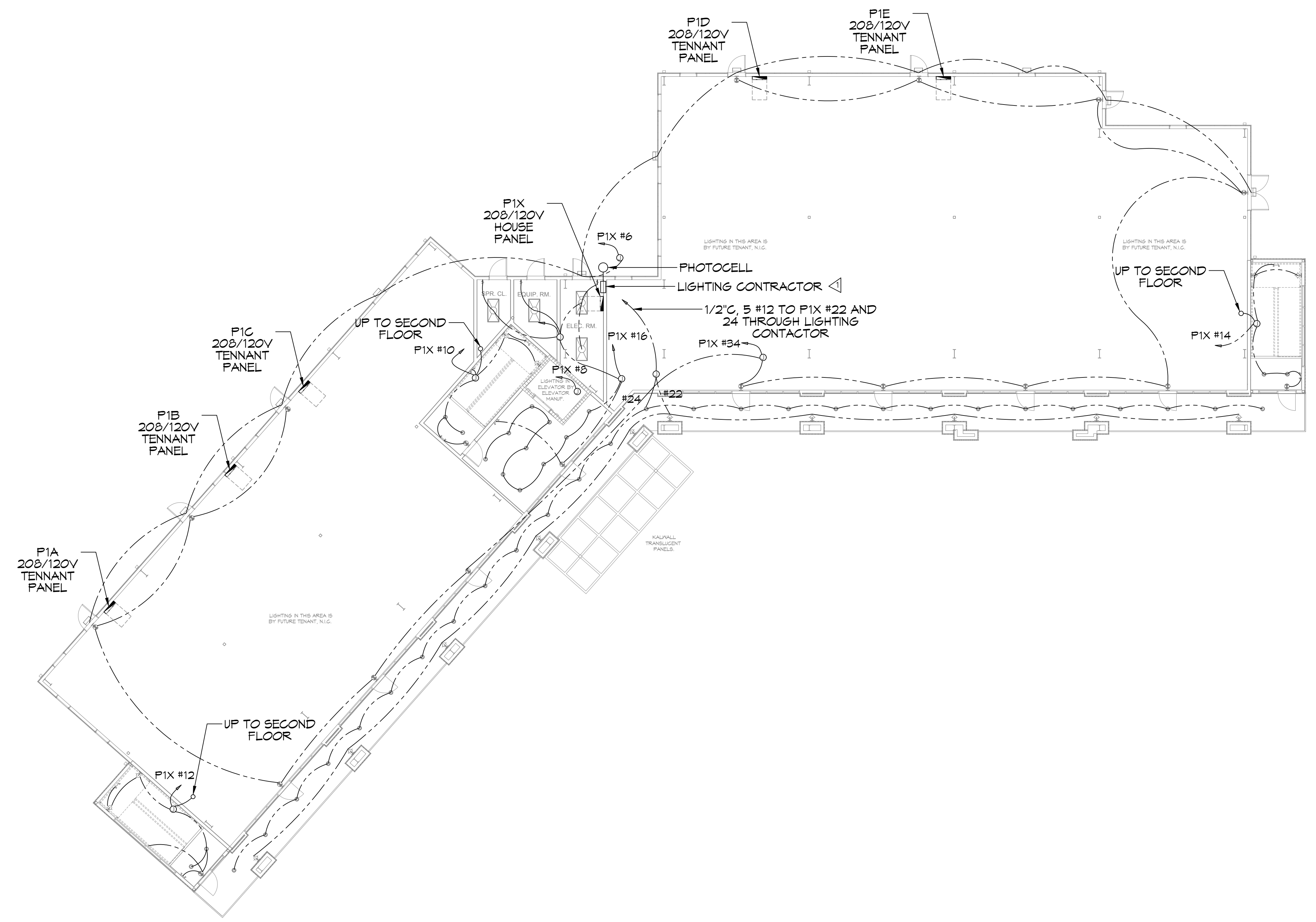
DRAWING NUMBER:
E101

SHEET No: 1 of 15



SOUTH I-10 SERVICE ROAD

23 SITE LIGHTING PLAN
 SCALE: 1/16"=1'-0"



GENERAL LIGHTING NOTES

1. ALL WORK SHALL COMPLY WITH APPLICABLE NATIONAL, STATE, AND LOCAL CODES, RULES, REGULATIONS, AND REQUIREMENTS OF THE SERVICE UTILITY COMPANY.
2. GENERAL CONTRACTOR SHALL NOTIFY THE ARCHITECT IMMEDIATELY IF ANY CONFLICTS OCCUR BETWEEN LIGHTING AND ANY OTHER TRADE. DO NOT PROCEED WITH INSTALLATION IN THAT AREA UNTIL CONFLICT HAS BEEN RESOLVED TO THE SATISFACTION OF THE ARCHITECT AND ENGINEER.
3. REFER TO ARCHITECTURAL DRAWINGS FOR EXACT LOCATION AND MOUNTING INSTRUCTIONS FOR ALL LIGHT FIXTURES. NOTIFY THE ARCHITECT AND ENGINEER OF ANY DISCREPANCIES BETWEEN THESE PLANS AND THE ARCHITECTURAL PLANS RELATING TO QUANTITY, TYPE AND LOCATION OF DEVICES AND/OR FIXTURES.
4. WHEN SPECIFIC LIGHT FIXTURE HAS BEEN SPECIFIED IN THE FIXTURE SCHEDULE, ELECTRICAL CONTRACTOR SHALL PROVIDE COMPLETE ASSEMBLY INCLUDING ALL PARTS AND HARDWARE TO INSURE PROPER FUNCTIONING FIXTURE.
5. ALL CONDUCTORS SHALL BE A MINIMUM OF #12 AWG UNLESS NOTED OTHERWISE.
6. ALL 120V RUNS LONGER THAN 60 FEET SHALL BE #10 AWG AND 277V RUNS LONGER THAN 150 FEET SHALL BE #10 AWG UNLESS NOTED OTHERWISE.
7. ALL CONDUCTORS SHALL BE COPPER.
8. WHERE CONDUCTOR SIZES ARE NOTED ON DRAWINGS, THAT WIRE SIZE SHALL BE THROUGH THE ENTIRE RUN UNLESS OTHERWISE NOTED.
9. MOUNTED LIGHT SWITCHES 48" AFF UNLESS NOTED OTHERWISE ON ARCHITECTURAL DRAWINGS.
10. WHERE MORE THAN ONE SWITCH OCCURS IN THE SAME LOCATION, THEY SHALL BE INSTALLED IN A GANG TYPE BOX UNDER ONE COVER PLATE. ALL GANGED SWITCHES SHALL HAVE A COMMON SEAMLESS FACEPLATE. EACH MULTI-GANGED BOX SHALL BE NO MORE THAN SIX (6) SWITCHES WIDE. WHERE MORE THAN SIX (6) SWITCHES ARE SHOWN AT ONE (1) LOCATION, ADDITIONAL MULTI-GANGED BOXES SHALL BE STACKED VERTICALLY AND THE WIDTH OF THE MULTI-GANGS SHALL BE AS EVEN AS POSSIBLE.
11. EACH DIMMER SWITCH SHALL HAVE A WATTAGE RATING 25% HIGHER THAN THE TOTAL WATTAGE OF ALL LIGHTS TO BE CONTROLLED BY THE DIMMER. DIMMER SIZES 600, 1000, 1500, AND 2000 WATTS, LUTRON NOVA T-STAR. WHERE SWITCHES ARE GANGED WITH DIMMERS, THE SWITCHES SHALL ALSO BE LUTRON NOVA T-STAR. FLUORESCENT AND LOW VOLTAGE DIMMERS SHALL BE LUTRON NOVA T-STAR.
12. ALL EMERGENCY EXIT LIGHT FIXTURES SHALL HAVE 90 MINUTE BATTERY BACKUP WITH INTEGRAL TEST BUTTON AND SHALL BURN CONTINUOUSLY.
13. ALL FLUORESCENT FIXTURES THAT UTILIZE DOUBLE-ENDED LAMPS AND CONTAIN BALLASTS SHALL BE PROVIDED WITH A DISCONNECTING MEANS IN ACCORDANCE WITH NEC 410.136.

THIS WORK SHALL MEET ALL ELECTRICAL CODES

1. 2020 NATIONAL ELECTRICAL CODE
2. NFPA 70
3. 2021 IECC ENERGY CODE

▲ MULTIPOLE LIGHTING CONTRACTOR, 30A, MAGNETICALLY HELD SQUARE D CLASS 2403 TYPE L IN NEMA 1 ENCLOSURE WITH H-O-A SWITCH IN FRONT COVER. CONTROLLED BY PHOTOCELL.

LIGHT FIXTURE SCHEDULE				
SYMBOL	TYPE	DESCRIPTION	LUMENS	WATTS
○	RECESSED CAN	6" ROUND RECESSED CAN, LED 4000K LITHONIA #LDN6-40-15-L06-WR-LD-TRW-MVOLT	1500	17.5
☐	TROFFER	LED 2' X 4' TROFFER TYPE 4000K LITHONIA #2GTL440L	4000	34.1
⊕	INDOOR WALL SCIENCE	LUMINOUS ACRYLIC WALL SCIENCE WITH TWO VERTICAL TRIM BARS. COPER #673-16-W-L3/827-UNV-ALP-2VTB	2000	20
⊕	EMERGENCY	LED EMERGENCY BATTERY LIGHT LITHONIA #EXR6ELM6		1
⊕	EXIT	LED EXIT LIGHT BATTERY BACKUP LITHONIA #EXR6ELM6		1
⊕	PARKING LOT	LED POLE TOP LIGHT 4000K LITHONIA #RSX3LEDP340KRAMVOLT WITH 25' POLE	32000	266
⊕	OUTDOOR WALL	LED OUTDOOR WALL PACK LITHONIA #WSTLEDP240KVMMVOLT	3000	30
⊕	OUTDOOR WALL SCIENCE	PER ARCHITECT		

DAMMON ENGINEERING, INC.
LOUISIANA & MISSISSIPPI

Chief Engineer: Brian Mitchell, PE
www.dammonengineering.com
info@dammoneng.com
PH: 985.649.9832
Sibley, LA 70459

REVISIONS	DATE	DESCRIPTION

SEAL:

DEVELOPMENT

1-10 SOUTH SERVICE ROAD
METAIRIE, LOUISIANA

JOB No: DATE: 01-08-2025
DRAWN BY: CKD CHECKED BY: RJK

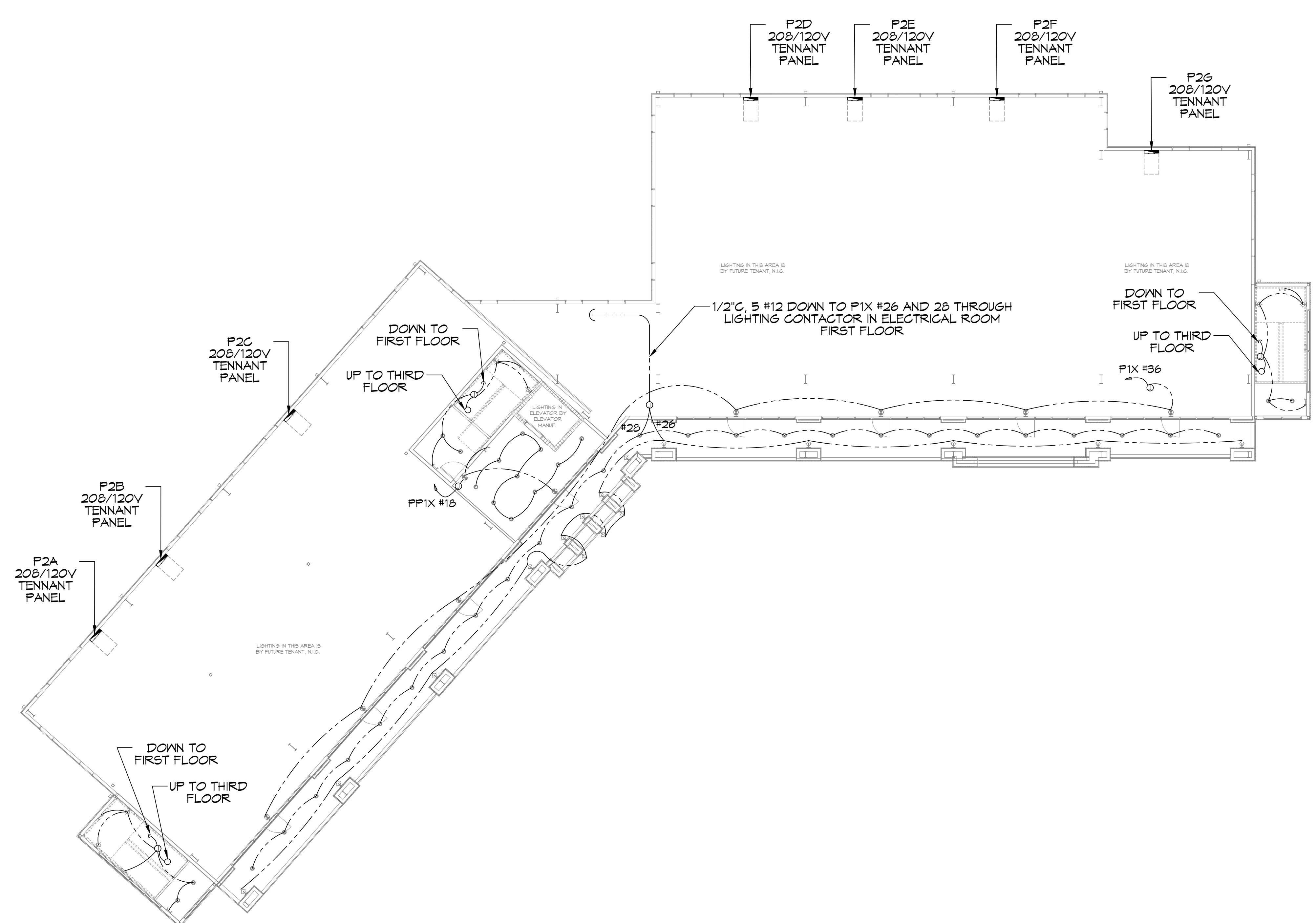
SHEET TITLE:
FIRST FLOOR LIGHTING PLAN

DRAWING NUMBER:
E102

SHEET No: 6 of 15

24 FIRST FLOOR LIGHTING PLAN
SCALE: 3/32"=1'-0"

D:\Projects\25 Second Floor Lighting\25 Second Floor Lighting.dwg (PLOT) 11/15/24 10:48 AM 1/16/24



25 SECOND FLOOR LIGHTING PLAN
SCALE: 3/32"=1'-0"

DAMMON ENGINEERING, INC.
LOUISIANA & MISSISSIPPI

www.dammonengineering.com
info@dammon.com
PH: 985.649.8832

Chief Engineer: Brian Wilsch, PE
Civil Engineer: Travis T. Hill
Sirelli, LA 70459

#	DESCRIPTION	DATE

SEAL:

MIXED USE DEVELOPMENT

1-10 SOUTH SERVICE ROAD
METairie LOUISIANA

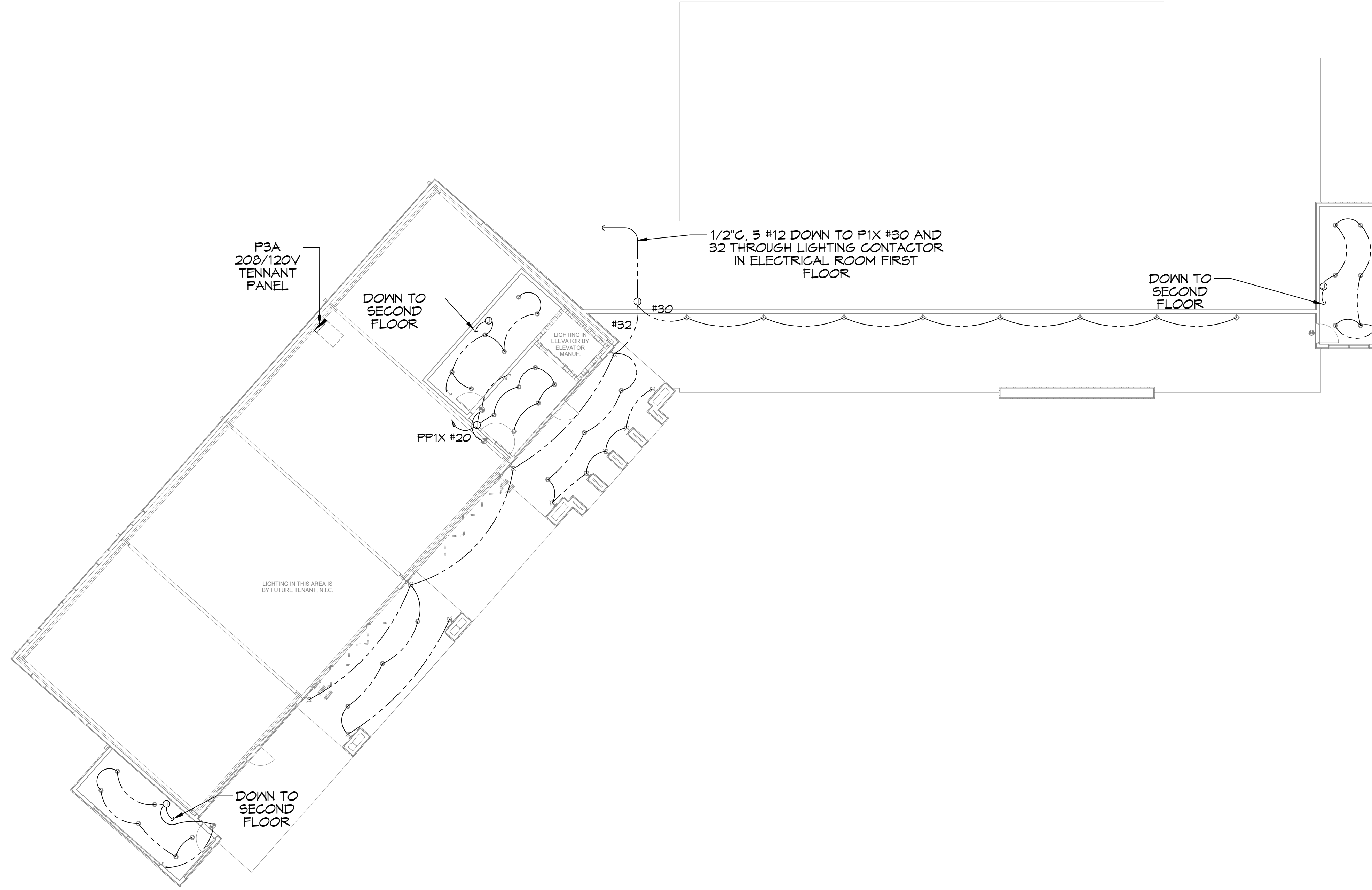
JOB No: DATE: 07-08-2025
DRAWN BY: CKD CHECKED BY: RJK

SHEET TITLE:
SECOND FLOOR LIGHTING PLAN

DRAWING NUMBER:
E103

SHEET No: 9 of 15

C:\Users\j... \OneDrive\Work\2025\01\26TH FLOOR LIGHTING PLAN.dwg - 26TH FLOOR LIGHTING PLAN.dwg - 26TH FLOOR LIGHTING PLAN.dwg - 26TH FLOOR LIGHTING PLAN.dwg



26TH FLOOR LIGHTING PLAN
SCALE: 3/32"=1'-0"

#	DESCRIPTION	DATE

SEAL:

MIXED USE DEVELOPMENT

1-10 SOUTH SERVICE ROAD
METAIRIE LOUISIANA

DATE: 01-08-2025
CHECKED BY: RJK
DRAWN BY: CKD

SHEET TITLE:
THIRD FLOOR LIGHTING
PLAN

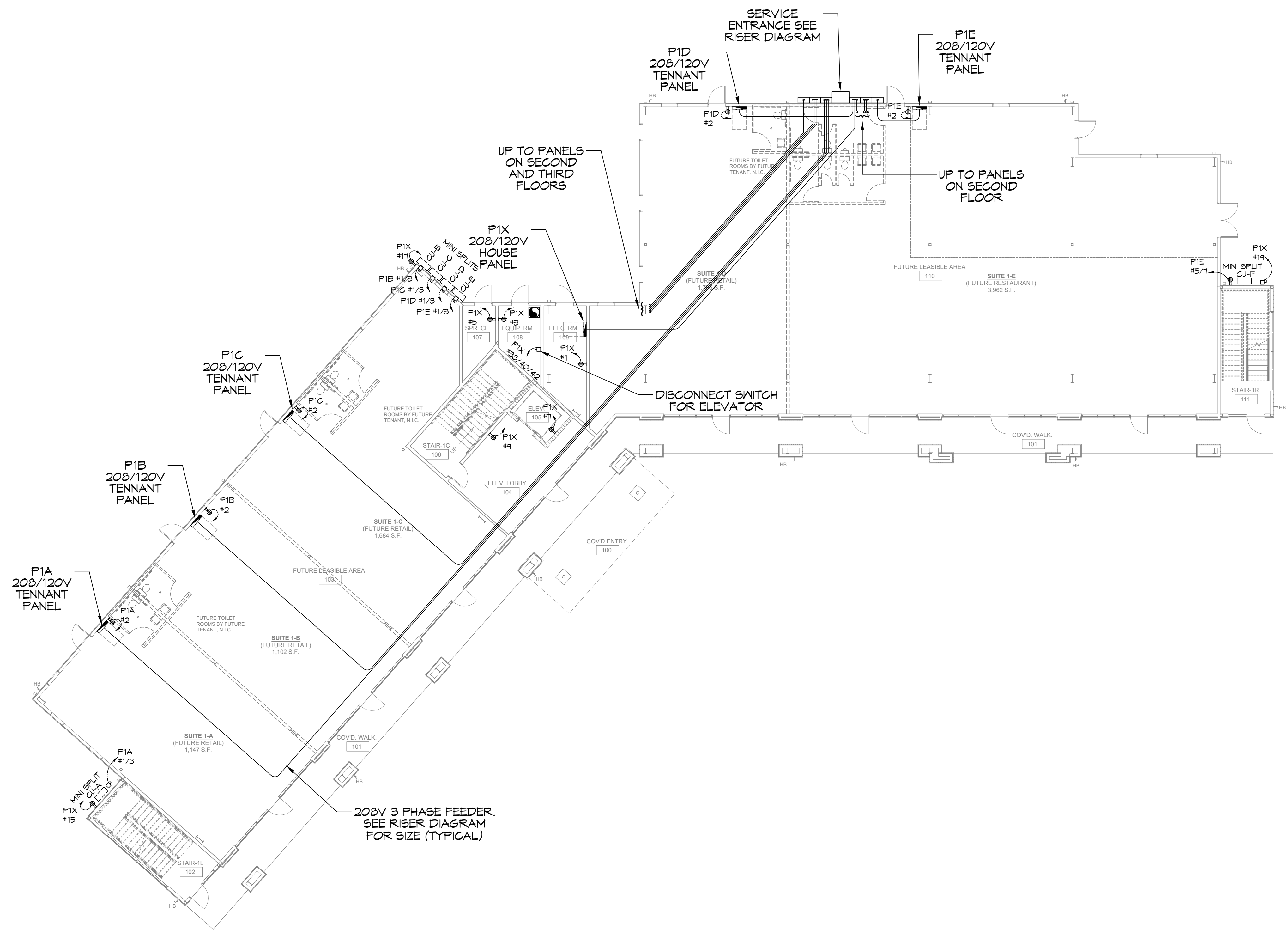
DRAWING NUMBER:
E104

POWER LEGEND

- SYMB
- STANDARD 120V DUPLEX RECEPTACLE, 18" AFF (UNLESS OTHERWISE NOTED)
- GFCI DUPLEX RECEPTACLE
- WEATHER-PROOF GFCI DUPLEX RECEPTACLE MOUNTED AT 30" AFF (UNLESS OTHERWISE NOTED)
- FUSED DISCONNECT, FUSE PER MANUFACTURERS RECOMMENDATIONS.
- EXHAUST FAN

GENERAL POWER NOTES

1. ALL WORK SHALL CONFORM TO THE LATEST EDITION OF THE NATIONAL ELECTRICAL CODE, THE GOVERNING ELECTRICAL CODE AND ALL OTHER INSPECTION DEPARTMENTS HAVING JURISDICTION. OBTAIN CERTIFICATES OR APPROVAL WHERE REQUIRED. ELECTRICAL CONTRACTOR SHALL VERIFY ALL WIRE AND CONDUIT SIZES FOR MECHANICAL EQUIPMENT TO BE INSTALLED.
2. ALL MATERIALS FURNISHED SHALL BE NEW AND SHALL BE U.L. LISTED.
3. THE DRAWINGS INDICATE SIZE AND GENERAL LOCATION OF WORK. SCALE DIMENSIONS SHALL NOT BE USED. THE EXACT LOCATION OF ALL LIGHTING FIXTURES, RECEPTACLES AND TELEPHONE OUTLETS, ETC. SHALL BE DETERMINED BY ACTUAL CONDITIONS IN THE FIELD.
4. PRIOR TO BIDDING, CONTRACTOR SHALL VISIT THE JOB SITE AND FAMILIARIZE THEMSELVES WITH THE EXISTING CONDITIONS.
5. ELECTRICAL CONTRACTOR SHALL COORDINATE HIS WORK WITH OTHER TRADES AND WITH OTHER CONTRACTORS WHOSE WORK MAY AFFECT THIS INSTALLATION.
6. ELECTRICAL CONTRACTOR SHALL COORDINATE INCOMING ELECTRICAL SERVICE WITH UTILITY COMPANY AND INCLUDE IN HIS BID ALL CHARGES AND FEES INCURRED IN MODIFICATIONS.
7. ELECTRICAL CONTRACTOR SHALL COORDINATE THE TELEPHONE INSTALLATION WITH THE TELEPHONE COMPANY AND THE GENERAL CONTRACTOR.
8. ELECTRICAL CONTRACTOR, BEFORE INSTALLING ANY OF THE WORK, SHALL SEE THAT IT DOES NOT INTERFERE WITH CLEARANCES REQUIRED FOR FINISHED CEILING, WALLS, PARTITIONS, WALLS, ETC. AS SHOWN IN THE ARCHITECTURAL DRAWINGS AND DETAILS. IF ANY WORK IS INSTALLED AND IT LATER DEVELOPS THAT SUCH DETAILS OR DESIGN CANNOT BE FOLLOWED, THE CONTRACTOR, AT HIS OWN EXPENSE, SHALL MAKE SUCH CHANGES IN THE WORK AS DIRECTED BY THE ARCHITECT, AS WELL AS TO PERMIT THE INSTALLATION OF THE ARCHITECTURAL WORK AS SHOWN ON THE PLANS AND DETAILS.
9. PERFORM TEST REQUIRED BY THE OWNER OR THE ENGINEER IN CONNECTION WITH THE OPERATION OF THE ELECTRICAL SYSTEM IN THE BUILDING. ALL TESTS SHALL BE MADE IN ACCORDANCE WITH THE LATEST STANDARD OF THE IEEE AND THE NATIONAL ELECTRICAL CODE.
10. MINIMUM CONDUCTOR SIZE SHALL BE #12, 600V INSULATION.
11. MINIMUM SIZE CONDUIT SHALL BE 3/4" ELECTRICAL METALLIC TUBING (EMT) FOR INTERIOR USE, 3/4" SCHEDULE 80 PVC FOR EXTERIOR USE ABOVE GRADE AND 1" SCHEDULE 40 PVC FOR EXTERIOR USE BELOW GRADE. BURIED A MINIMUM OF 18" FOR NON-VEHICULAR TRAFFIC AREAS AND 36" IN VEHICULAR TRAFFIC AREAS. EMT SHALL BE USED WITH METAL STUD CONSTRUCTION AND ALL ASSEMBLY OCCUPANCIES. USE NMC IN WOOD CONSTRUCTION. CONTRACTOR SHALL INSTALL WIRING, CIRCUIT BREAKERS AND OTHER CIRCUIT COMPONENTS TO MATCH EQUIPMENT ACTUALLY INSTALLED.
12. ALL 120V RUNS LONGER THAN 60 FEET SHALL BE #10 AWG AND 277V RUNS LONGER THAN 150 FEET SHALL BE #10 AWG UNLESS NOTED OTHERWISE.
13. INSTALL GROUND FAULT RECEPTACLES AT RECEPTACLE LOCATIONS WITHIN 5' OF SINKS OR LAVATORIES, AND AT EXTERIOR LOCATIONS. EXTERIOR RECEPTACLES SHALL ALSO BE WATERPROOF. ALL RECEPTACLES IN THE WAITING AREA SHALL HAVE BE TAMPER PROOF.
14. BONDING AND GROUNDING SHALL BE IN ACCORDANCE WITH NFPA 70:250-63, NFPA 250-23, 250-71 & 250-72.
15. GROUND NEUTRAL IN ACCORDANCE WITH NFPA 70:250-230.
16. FUSES SHALL BE ITT CLASS K5, 250 VOLT, 200,000 AMP INTERRUPTING CAP.
17. PROVIDE SERVICES OF A FIRE/SMOKE DETECTION AND ALARM COMPANY TO DESIGN AND INSTALL ALARM SYSTEM TO MEET REQUIREMENTS OF THE STATE FIRE MARSHAL AND THE FIRE DISTRICT.
18. EXTERIOR LIGHTING SHALL BE SHADED OR INWARDLY DIRECTED IN SUCH A MANNER SO THAT NO DIRECT LIGHTING OR GLARE IS CAST BEYOND THE PROPERTY LINE. THE INTENSITY OF SUCH LIGHTING SHALL NOT EXCEED ONE FOOT CANDLE AS MEASURED AT THE ABUTTING PROPERTY LINE.
19. ALL ELECTRICAL, MECHANICAL AND PLUMBING PENETRATING FIRE PARTITIONS SHALL BE FIRE CAULKED. (PENETRATIONS THROUGH RATED CONSTRUCTION SHALL BE SEALED WITH A MATERIAL CAPABLE OF PREVENTING THE PASSAGE OF FLAMES AND HOT GASES WHEN TESTED IN ACCORDANCE WITH ASTM-E814.)
20. VERIFY ELECTRICAL CONNECTIONS PER MANUFACTURERS RECOMMENDATIONS.
21. ALL BRANCH CIRCUITS SERVING PATIENT CARE AREAS SHALL PROVIDE AN EFFECTIVE GROUND-FAULT CURRENT PATH BY INSTALLATION IN A METAL RACEWAY SYSTEM OR A MEDICAL GRADE MC CABLE (NEC ART. 517.13(A & B)).



27 FIRST FLOOR POWER PLAN
SCALE: 3/32"=1'-0"

THIS WORK SHALL MEET ALL ELECTRICAL CODES

1. 2020 NATIONAL ELECTRICAL CODE
2. NFPA 70
3. 2021 IECC ENERGY CODE

DAMMON ENGINEERING, INC.
LOUISIANA & MISSISSIPPI

Chief Engineer: Brian Wiltch, PE
Info@dammoneng.com
Sibley, LA 70459
PH: 985.649.8327

REVISIONS	DATE	DESCRIPTION

SEAL: _____

DEVELOPMENT

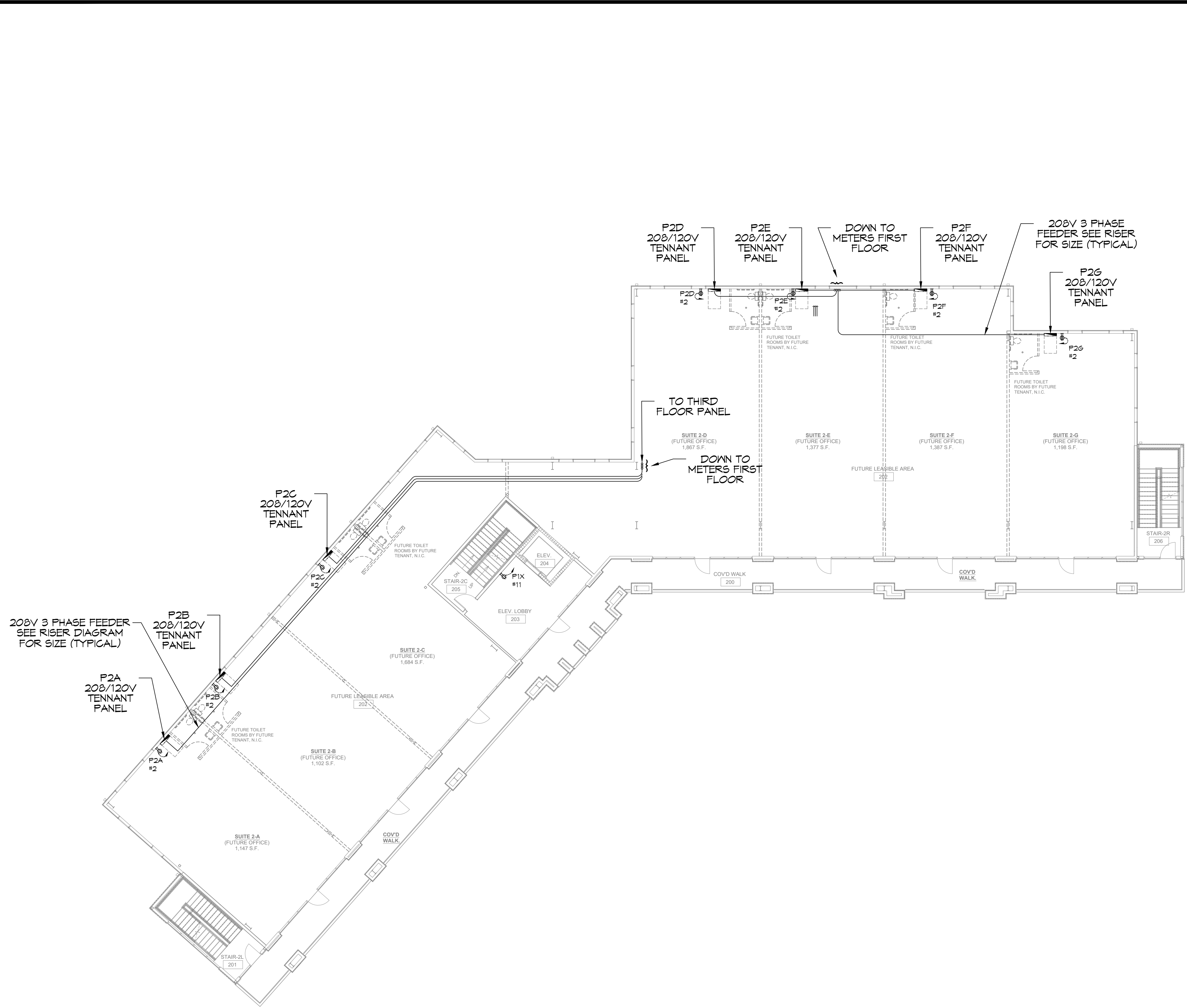
1-10 SOUTH SERVICE ROAD
METAIRIE, LOUISIANA

DATE: 01-09-2025
JOB No: _____
DRAWN BY: CKD
CHECKED BY: RJK

SHEET TITLE:
FIRST FLOOR POWER PLAN

DRAWING NUMBER:

E105



28 SECOND FLOOR POWER PLAN
SCALE: 3/32"=1'-0"

DAMMON
ENGINEERING, INC.
LOUISIANA & MISSISSIPPI

www.dammonengineering.com
info@dammon.com
Chief Engineer: Brian Altsch, PE
Surrey, VA 22459
Sikee, LA 70459
PH: 985.649.8332

REVISIONS	DATE
#	DESCRIPTION

SEAL:

DEVELOPMENT

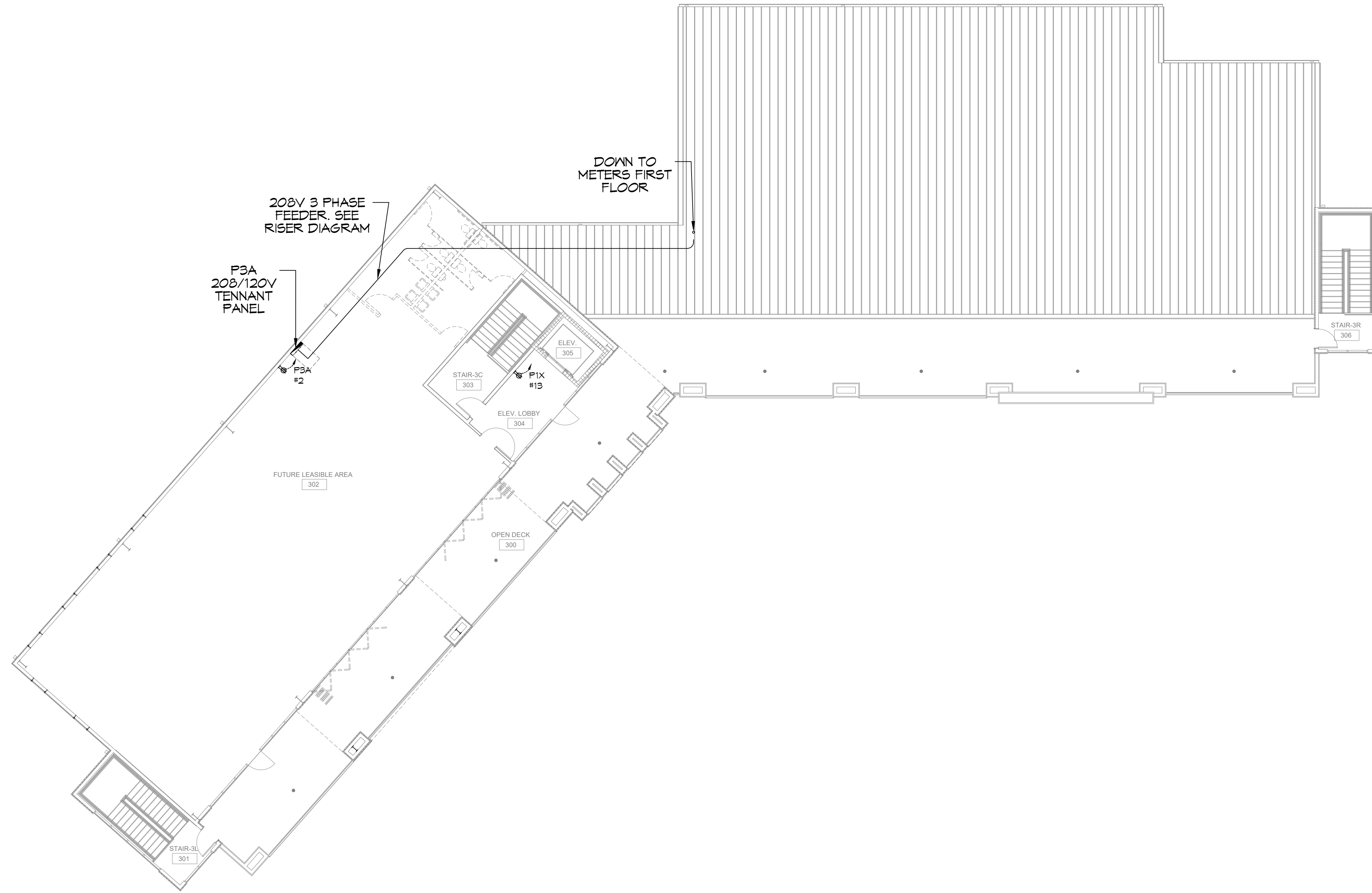
1-10 SOUTH SERVICE ROAD
METAIRIE, LOUISIANA

JOB No: 01-09-2025
DATE: 01-09-2025
DRAWN BY: CKD
CHECKED BY: R.K.

SHEET TITLE:
SECOND FLOOR POWER PLAN

DRAWING NUMBER:
E106

D:\Projects\2025\01-08-2025\1-10 SOUTH SERVICE ROAD\29TH FLOOR POWER PLAN.dwg



29TH FLOOR POWER PLAN
SCALE: 3/32"=1'-0"

DAMMON

ENGINEERING, INC.

LOUISIANA & MISSISSIPPI

www.dammonengineering.com
info@dammon.com
Chief Engineer: Brian Altsch, PE
Surrey, VA 22196
Shreveport, LA 70508
PH: 985.649.8832

#	DESCRIPTION	DATE

SEAL:

MIXED USE
DEVELOPMENT

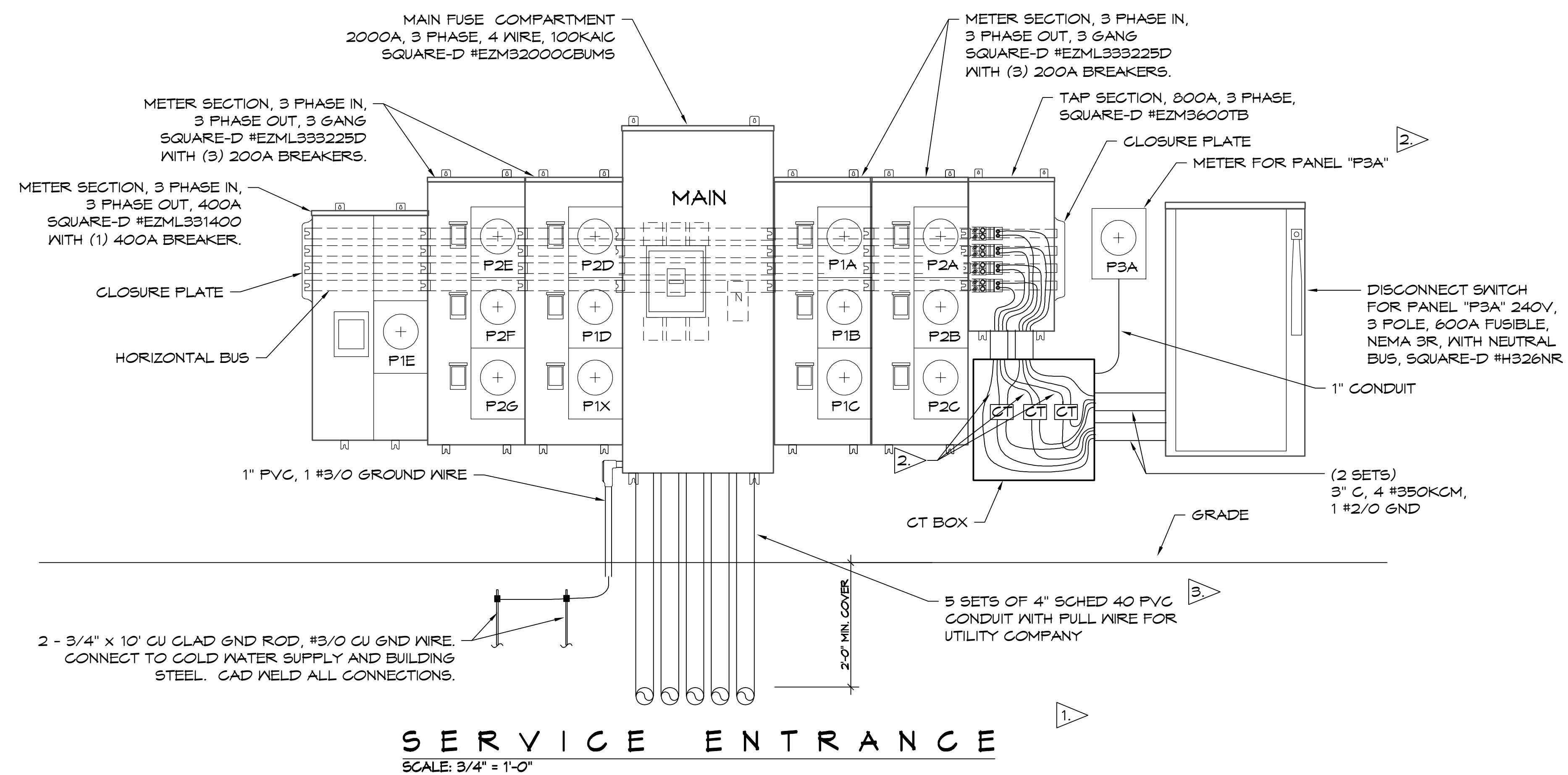
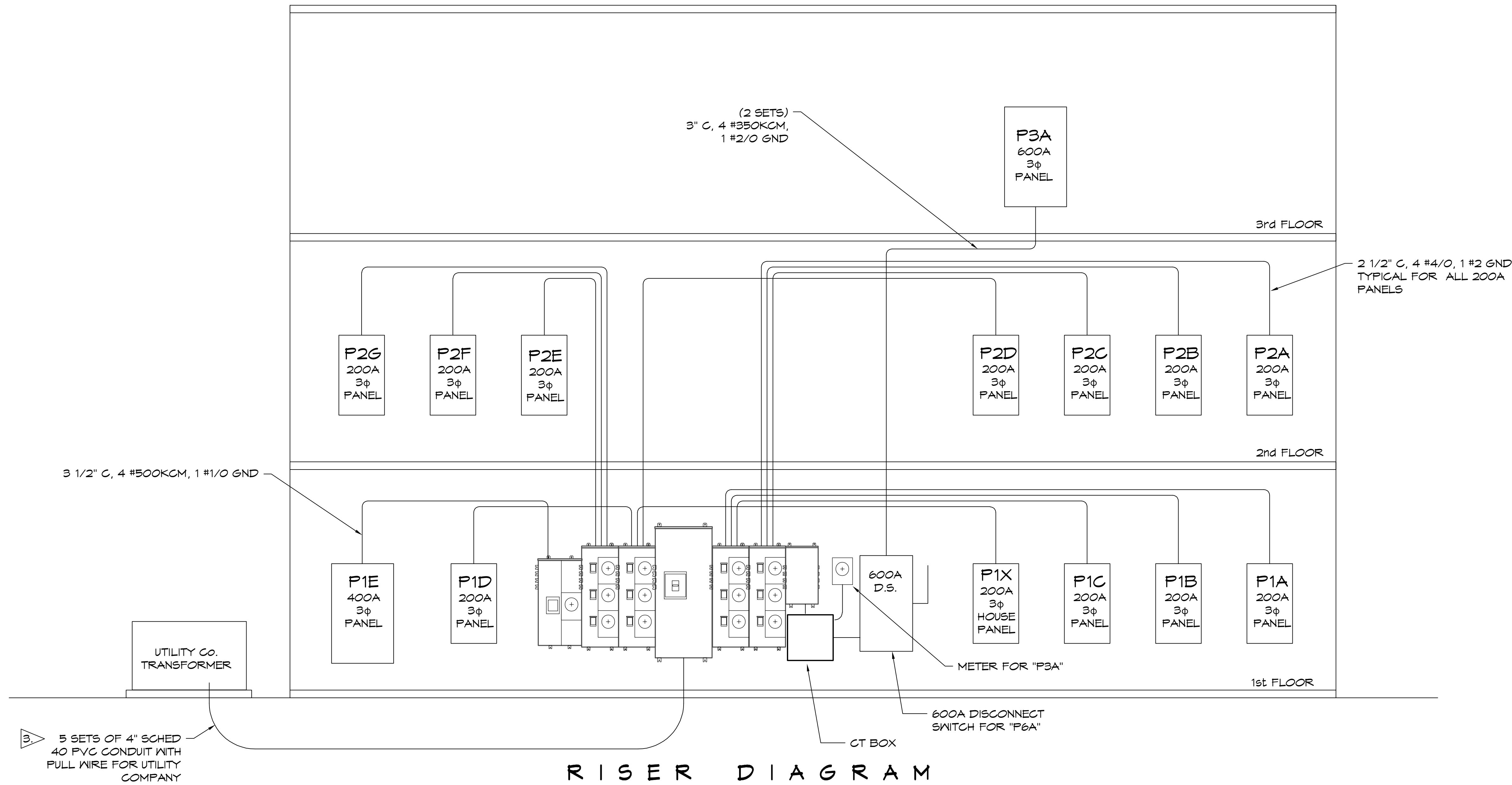
1-10 SOUTH SERVICE ROAD
METAIRIE LOUISIANA

DRAWN BY: CKD | CHECKED BY: RJK | DATE: 01-08-2025

SHEET TITLE:
THIRD FLOOR POWER
PLAN

DRAWING NUMBER:
E107

FILE NAME: C:\Users\Bryan.DAMMON\Documents\Drawings\109 - Riser Diagram Service Entrance.dwg DATE: 8/15/2015 8:25:13 AM



NOTES:

1. BEFORE PURCHASING EQUIPMENT AND STARTING WORK, THE CONTRACTOR SHALL CONTACT ENTERGY TO COORDINATE THE INSTALLATION. ALL WORK SHALL CONFORM TO THE LATEST EDITION OF THE ENTERGY CUSTOMER SERVICES STANDARDS AND THE NATIONAL ELECTRIC CODE.
2. UTILITY COMPANY TO PROVIDE CURRENT TRANSFORMERS, METER AND METER ENCLOSURE. CONTRACTOR TO PROVIDE METER ENCLOSURE AND INSTALL EQUIPMENT.
3. VERIFY CONDUIT SIZE AND QUANTITY WITH UTILITY COMPANY BEFORE PURCHASING MATERIAL.

DAMMON

ENGINEERING, INC.

LOUISIANA & MISSISSIPPI

Chief Engineer: Brian Metch, PE
 554 Old Spanish Trail
 Slidell, LA 70468
 www.dammonengineering.com
 info@dammonengineering.com
 PH: 985.649.3822

#	DESCRIPTION	DATE

SEAL:

MIXED USE DEVELOPMENT

110 SOUTH SERVICE ROAD
 METairie, LOUISIANA
 JOB NO: 01-109-2025
 DATE: 01-10-2025
 CHECKED BY: GCD
 DRAWN BY: RJK

SHEET TITLE:
RISER DIAGRAM SERVICE ENTRANCE

DRAWING NUMBER:
E109

SHEET No: 15 of 15