

Ordering Information

Applicable product:		
With neck jets	K-812-N	shown
Without neck jets	K-812-H1	not shown
Accessories/hardware:		
Jet trim kit	K-9696	required
Drain	K-7161-AF	recommended
Undermount installation kit	K-581	optional
Grip rails	K-9616	required
Vinyl tiling-in bead*	K-1179	optional
*Use K-1179 vinyl bead when wall material contacts any top surface of bath.		

Required Electrical Service

Dedicated circuit required, protected with Class A Ground-Fault Circuit-Interrupter (GFCI):	
Pump/control	120 V., 20 A, 60 Hz

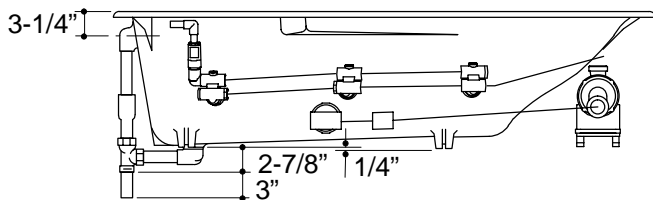
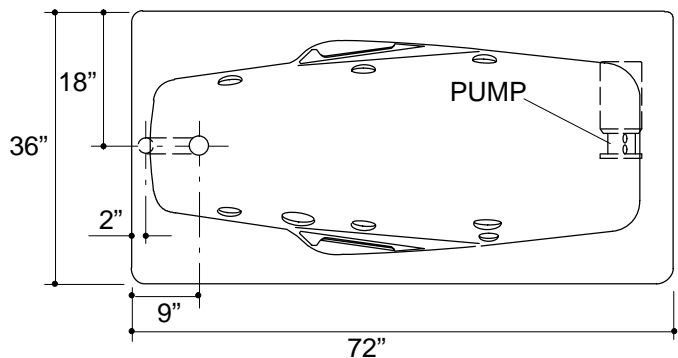
Product Information

Fixture*:	basin area	top area	weight	
Bathing well	47" x 24"	67" x 29"	425 lbs.	
	water depth	capacity		
To overflow	12-7/8"	52 gals.		
* Approximate measurements for comparison only.				
Pump:	HP	V	Hz	A
1-speed	2	120	60	18.5

Installation Notes

Refer to installation instructions included with fixture before beginning installation.

Each pump is supplied with a grounding type plug-in cord. Locate the outlet behind the whirlpool, and within 24" of the pump.



Roughing-In Notes

Fixture dimensions are nominal and conform to tolerances in ANSI Standard A112.19.

No change in measurements if connected with drain illustrated.

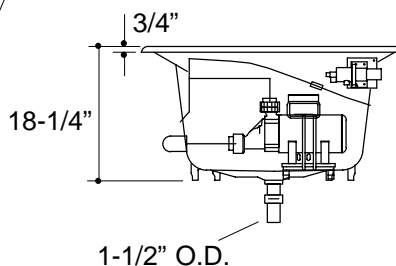
Cut-out for drop-in	70-1/2" x 34-1/2"
---------------------	-------------------

Cut-out for undermount	K-581 template required
------------------------	-------------------------

Minimum access:

Pump/control	34" W x 15" H	required
--------------	---------------	----------

PUMP/CONTROL ACCESS



1.25>132