

NOTES

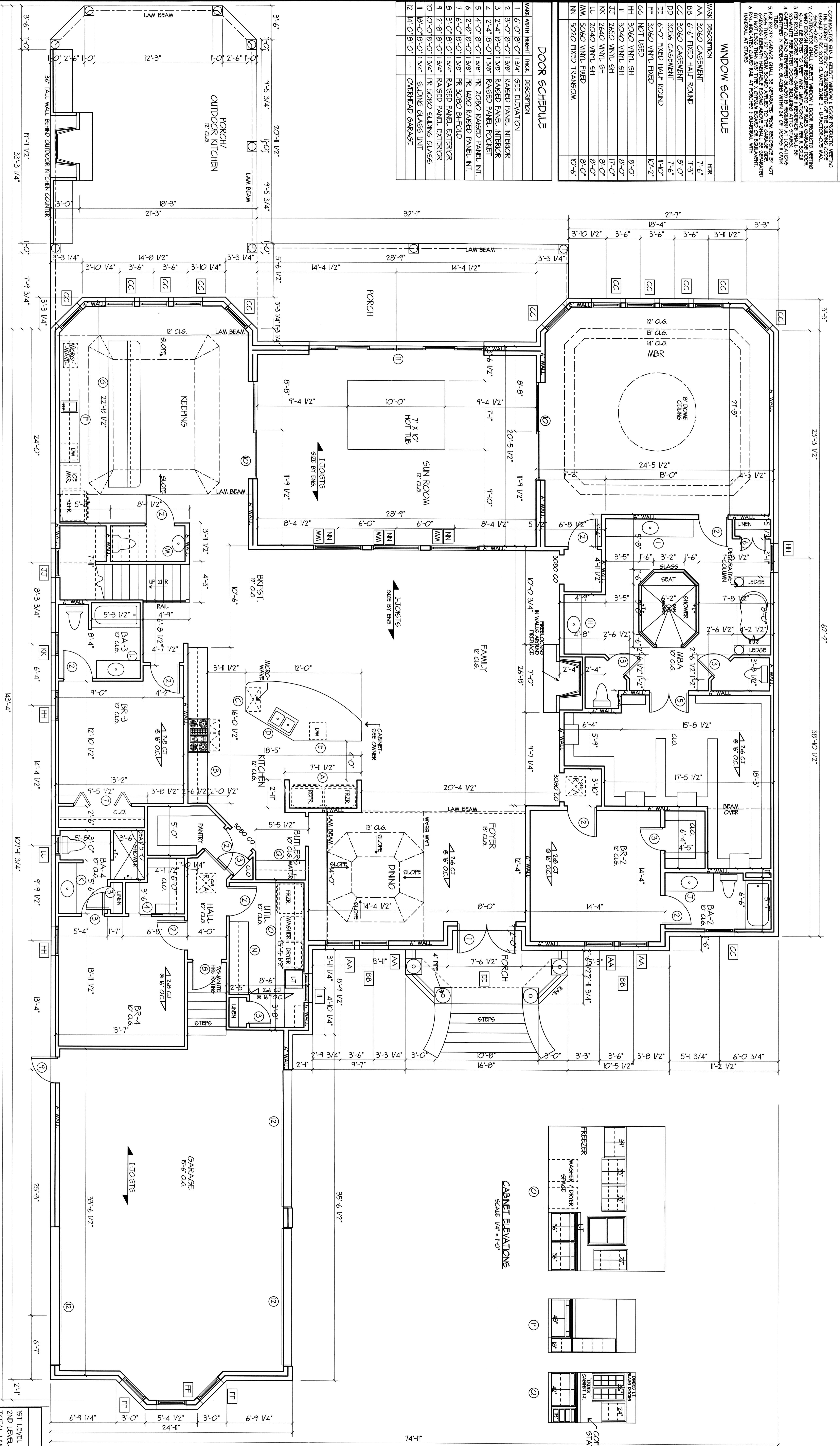
1. CONTRACTOR SHALL SELECT WINDOW & DOOR PRODUCTS MEETING ENERGY STAR REQUIREMENTS.
2. CONTRACTOR SHALL SELECT WINDOW & DOOR PRODUCTS MEETING ENERGY STAR REQUIREMENTS.
3. PER LOCAL CODES, ALL WINDOWS & DOORS SHALL BE SAFETY GLAZED. SAFETY GLAZING SHALL BE 1/2" THICK LAMINATED GLASS WITH 1/8" AIR SPACE AT 1/4" SPACING.
4. SAFETY GLAZING SHALL BE 1/2" THICK LAMINATED GLASS WITH 1/8" AIR SPACE AT 1/4" SPACING.
5. PER LOCAL CODES, ALL WINDOWS & DOORS SHALL BE SAFETY GLAZED. SAFETY GLAZING SHALL BE 1/2" THICK LAMINATED GLASS WITH 1/8" AIR SPACE AT 1/4" SPACING.
6. PER LOCAL CODES, ALL WINDOWS & DOORS SHALL BE SAFETY GLAZED. SAFETY GLAZING SHALL BE 1/2" THICK LAMINATED GLASS WITH 1/8" AIR SPACE AT 1/4" SPACING.

WINDOW SCHEDULE

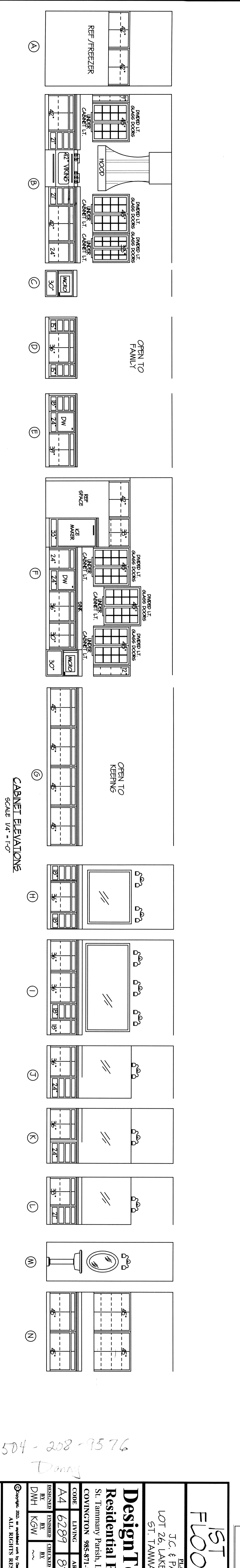
MARK	DESCRIPTION	SIZE
AA	3060 CASHEMINT	7'-6"
BB	6'-6" FIXED HALF ROUND	11'-3"
CC	3060 CASHEMINT	8'-0"
DD	3056 CASHEMINT	7'-6"
EE	6'-0" FIXED HALF ROUND	11'-0"
FF	3060 VINYL FIXED	10'-2"
GG	NOT USED	
HH	3060 VINYL SH	8'-0"
II	3060 VINYL SH	8'-0"
JJ	2650 VINYL SH	17'-0"
KK	2650 VINYL SH	8'-0"
LL	2040 VINYL SH	8'-0"
MM	5060 VINYL FIXED	8'-0"
NN	5020 FIXED TRANSCOM	10'-6"

DOOR SCHEDULE

MARK	HEIGHT	THICK	DESCRIPTION
I	6'-0"	1 3/4"	SEE ELEVATION
2	3'-0"	1 3/4"	RAISED PANEL INTERIOR
3	2'-4"	1 3/4"	RAISED PANEL INTERIOR
4	2'-4"	1 3/4"	RAISED PANEL TOGGLES
5	4'-0"	1 3/4"	FR. 2080 RAISED PANEL INT.
6	2'-8"	1 3/4"	FR. 1480 RAISED PANEL INT.
7	6'-0"	1 3/4"	FR. 3080 RAISED PANEL EXT.
8	3'-0"	1 3/4"	RAISED PANEL EXT.
9	2'-8"	1 3/4"	RAISED PANEL EXT.
10	10'-0"	1 3/4"	FR. 5080 SLIDING GLASS
11	8'-0"	1 3/4"	SLIDING GLASS INT.
12	14'-0"	1 3/4"	OVERHEAD GARAGE



FLOOR PLAN
SCALE 1/4" = 1'-0"



504-208-7576
Dennis

1ST LEVEL FLOOR PLAN

DESIGNER: J.C. & PATSY HYMEL
 LOT 26, LAKESHORE ESTATES
 ST. TAMMANT PARISH, LA

DesignTech Residential Planners, Inc.
 St. Tammany Parish, LA
 COVINGTON 985-871-7311
 SLIDELL 985-847-0600

CODE	LIVING AREA U.B.	DATE	5-16-13
AA	6789	INDEX	9970
BB	8254		
CC			
DD			
EE			
FF			
GG			
HH			
II			
JJ			
KK			
LL			
MM			
NN			
OO			
PP			
QQ			
RR			
SS			
TT			
UU			
VV			
WW			
XX			
YY			
ZZ			

1ST LEVEL LIVING AREA: 3686
 2ND LEVEL LIVING AREA: 1233
 TOTAL LIVING AREA: 4919
 GARAGE: 922
 PORCHES: 1043
 TOTAL AREA UNDER B.M.: 8254