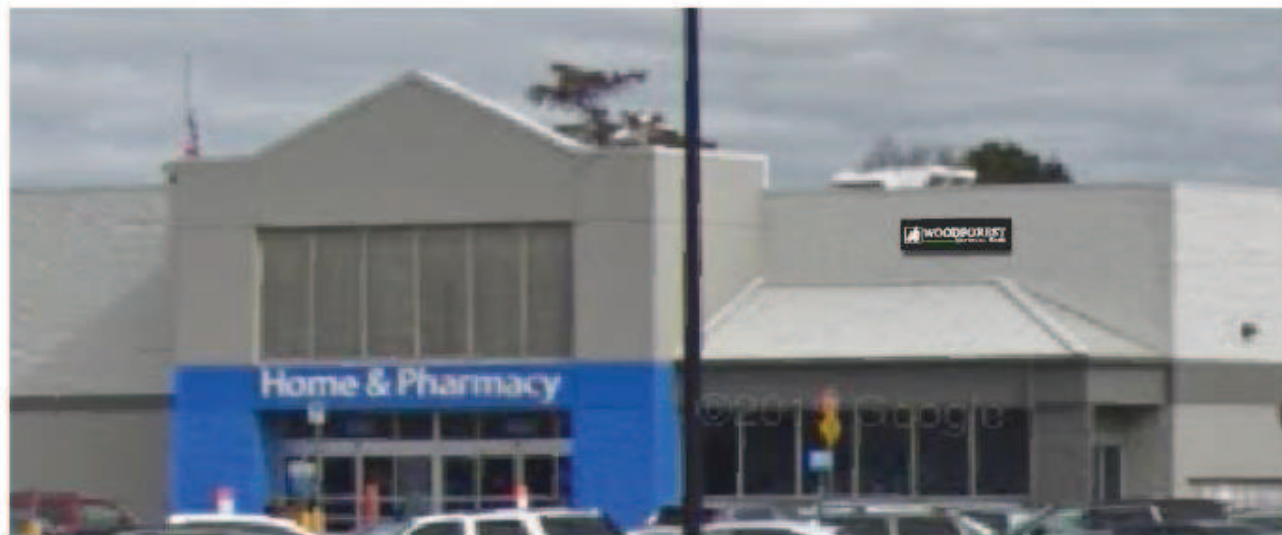


A PROPOSED S/F EXTERIOR WALL SIGN ELEVATION

SCALE: 3/32"=1'-0"



Design #	
0404580Ar1	
Sheet 1 of 3	
Client	
WOODFOREST	
Address	
1501 MANHATTAN BLVD. HARVEY, LA	
Account Rep.	M. DRURY SD
Designer	JP
Date	9/25/19
Approval / Date	
Client	
Sales	
Estimating	
Art	
Engineering	
Landlord	
Revision / Date	
R1 KMC 10/14/19: add city requirements	



A PROPOSED S/F EXTERIOR WALL SIGN



CHANDLER SIGNS
chandler signs.com

National
20100 Sawingood Blvd
Suite 200
Harvey, LA 70058
(504) 885-2222

San Antonio
27110 San Antonio Avenue
Suite 200
San Antonio, TX 78222
(214) 948-8888

West Coast
2220 E. Camelback Road
Suite 200
Phoenix, AZ 85016
(602) 998-1111

Northeast US
2000 Route 10
Suite 200
Lynchburg, VA 24090
(800) 887-8888

Florida
2900 Auto 18 Pkwy
Suite 200
Lakeland, FL 34057
(888) 444-1111

Georgia
201 Woodstock Road
Suite 200
Marietta, GA 30067
(770) 424-1111

South Texas
PO Box 575 100 Doss Drive
Austin, TX 78704
(512) 835-1111

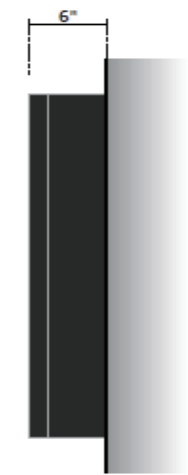
This drawing is the property of Chandler Signs, LLC. All rights in its use for reproduction are reserved by Chandler Signs, LLC.

FINAL ELECTRICAL CONNECTION BY CUSTOMER

THE OWNER IS TO VERIFY THAT THE MATERIALS AND CONNECTIONS ARE IN ACCORDANCE WITH THE APPLICABLE LOCAL, STATE, AND FEDERAL ELECTRICAL CODES AND REGULATIONS.

This sign is designed to withstand 130 MPH wind load
 This sign will contain a UL label
 This sign is to be installed using 3/8" thru-bolts or appropriately sized fasteners as necessary.

DAMMON ENGINEERING, INC.
LOUISIANA & MISSISSIPPI
514811 Louisiana
P.O. Box 620-5152 P.O. Box 641-5150
www.dammonengineering.com
info@dammonengineering.com



END VIEW

A S/F EXTERIOR WALL SIGN

ONE (1) REQUIRED - MANUFACTURE & INSTALL

SCALE: 1"=1'-0"

20 SQ FT

6" DEEP ALUMINUM S/F SIGN CABINET & ALUMINUM RETAINERS PAINTED BLACK

#7328 WHITE POLYCARBONATE FACE w/ 1st SURFACE 3M 7725-22 OPAQUE MATTE BLACK VINYL OVERLAY & WEED-OUT/SHOW-THRU WHITE GRAPHICS / GREEN VINYL STRIPE OVERLAY TO MATCH BRILLIANT GREEN 3630-106

INTERNALLY ILLUMINATED w/ WHITE LED MODULES - PHOTOCCELL CONTROL

MOUNT FLUSH TO FASCIA w/ NON-CORROSIVE HARDWARE AS REQ'D PER SITE CONDITIONS



DAMMON
ENGINEERING, INC.

LOUISIANA & MISSISSIPPI
Shreveport, Louisiana PO 905-645-5932 Fax 905-644-5950
New Orleans, Louisiana PO 905-644-5950 Fax 905-644-5950

Design #	0404580A.1
Sheet	2 of 3
Client	WOODFOREST
Address	1501 MANHATTAN BLVD. HARVEY, LA
Account Rep.	M. DRURY SD
Designer	JP
Date	9/25/19
Approval / Date	
Client	
Sales	
Estimating	
Art	
Engineering	
Landlord	

Revision / Date	
R1	KMc 10/14/19: add city requirements



chandler signs.com	
National Headquarters	14201 Scowden Road Fort Worth, TX 76155 (817) 412-8800 Fax (817) 412-8294
San Antonio	17310 San Pedro Avenue Suite 200 San Antonio, TX 78232 (214) 481-8800 Fax (214) 481-8724
West Coast	3220 Executive Ridge Drive Suite 120 Vista, CA 92081 (760) 541-1234 Fax (760) 541-1234
Northeast US	2301 River Road Suite 202 Louisville, KY 40206 (502) 261-8800 Fax (502) 261-8800
Florida	2504 N.W. 181 Avenue Circle Davie, FL 33417 (954) 410-1100 Fax (954) 410-1100
Georgia	711 Woodstone Place Lawrenceville, GA 30046 (770) 724-8800 Fax (770) 724-8800
South Texas	PO BOX 120 106 Donal Drive Port Laniel, TX 76154 (817) 412-8800 Fax (817) 412-8800

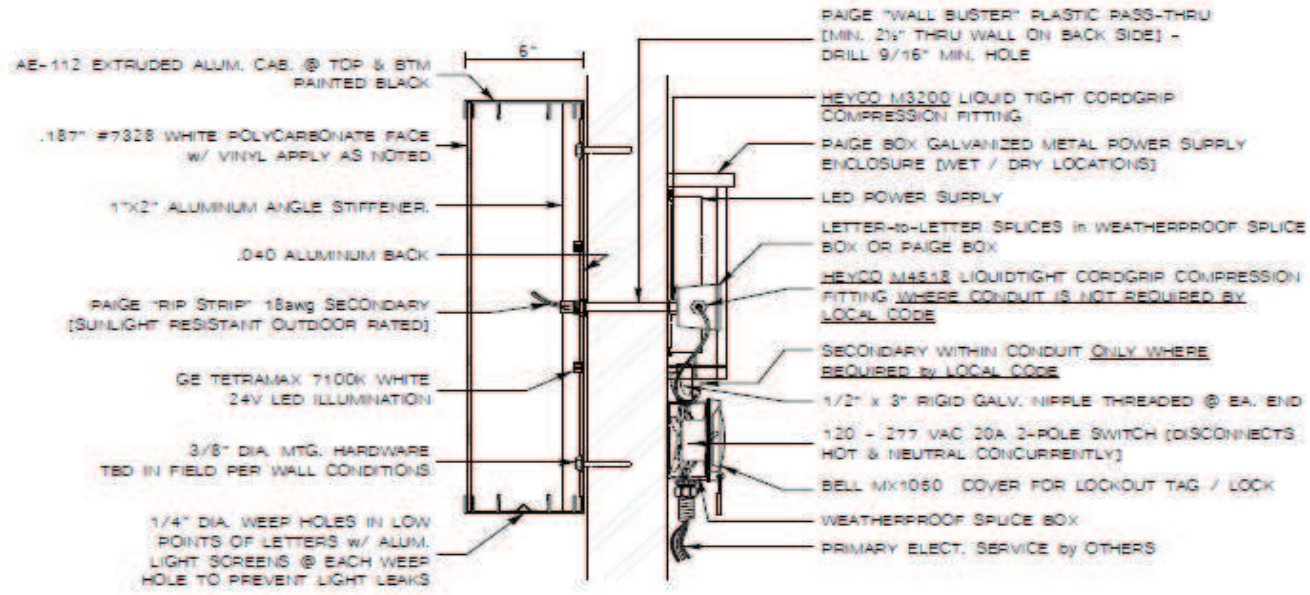
This drawing is the property of Chandler Signs, LLC. All rights to its use for reproduction are reserved by Chandler Signs, LLC.

FINAL ELECTRICAL CONNECTION BY CUSTOMER



This sign is designed to withstand 130 MPH wind load
This sign will contain a UL label
This sign is to be installed using 3/8" thru-bolts or appropriately sized fasteners as necessary.

Design #	
0404580Ar1	
Sheet 3 of 3	
Client	
WOODFOREST	
Address	
1501 MANHATTAN BLVD. HARVEY, LA	
Account Rep.	M. DRURY SD
Designer	JP
Date	9/25/19
Approval / Date	
Client	
Sales	
Estimating	
Art	
Engineering	
Landlord	
Revision / Date	
R1: KMC 10/24/19: add city requirements	



FACE-LIT WALL SIGN SECTION SCALE 1 1/2" = 1'-0"
REMOTE POWER SUPPLIES



DAMMON
ENGINEERING, INC.
LOUISIANA & MISSISSIPPI
31641 Louisiana
PO 905-645-5332 Fax 905-644-5350 www.dammonengineering.com info@dammonengineering.com

CHANDLER SIGNS
chandler signs.com
National Headquarters: 24000 Sycamore Road, Katy, TX 77450
San Antonio: 27109 San Pedro Avenue, Suite 200, San Antonio, TX 78203
West Coast: 32202 Sycamore Ridge Drive, Suite 200, Vista, CA 92083
Northwest US: 24000 Sycamore Road, Suite 200, Katy, TX 77450
Florida: 27000 Sycamore Ridge Drive, Suite 200, Tampa, FL 33607
Georgia: 211 Alondra Place, Marietta, GA 30066
South Texas: 40304 137th Street, Suite 200, Houston, TX 77060
This drawing is the property of Chandler Signs, LLC. All rights in its use for reproduction are reserved by Chandler Signs, LLC.
FINAL ELECTRICAL CONNECTION BY CUSTOMER
THIS SIGN IS DESIGNED TO BE RETALLED IN ACCORDANCE WITH APPROVAL OF THE NATIONAL ELECTRICAL CONTRACTORS ASSOCIATION LOCAL CODES. THE WALLS MUST BE APPROVED AND CAPABLE OF WITHSTANDING THE SIGN WEIGHT.

This sign is designed to withstand 130 MPH wind load
This sign will contain a UL label
This sign is to be installed using 3/8" thru-bolts or appropriately sized fasteners as necessary.