

FILE NAME: A:\Projects\2017\2017-09-15\2017-09-15.dwg DATE: 9/15/2017 11:51:29 AM

LEGEND

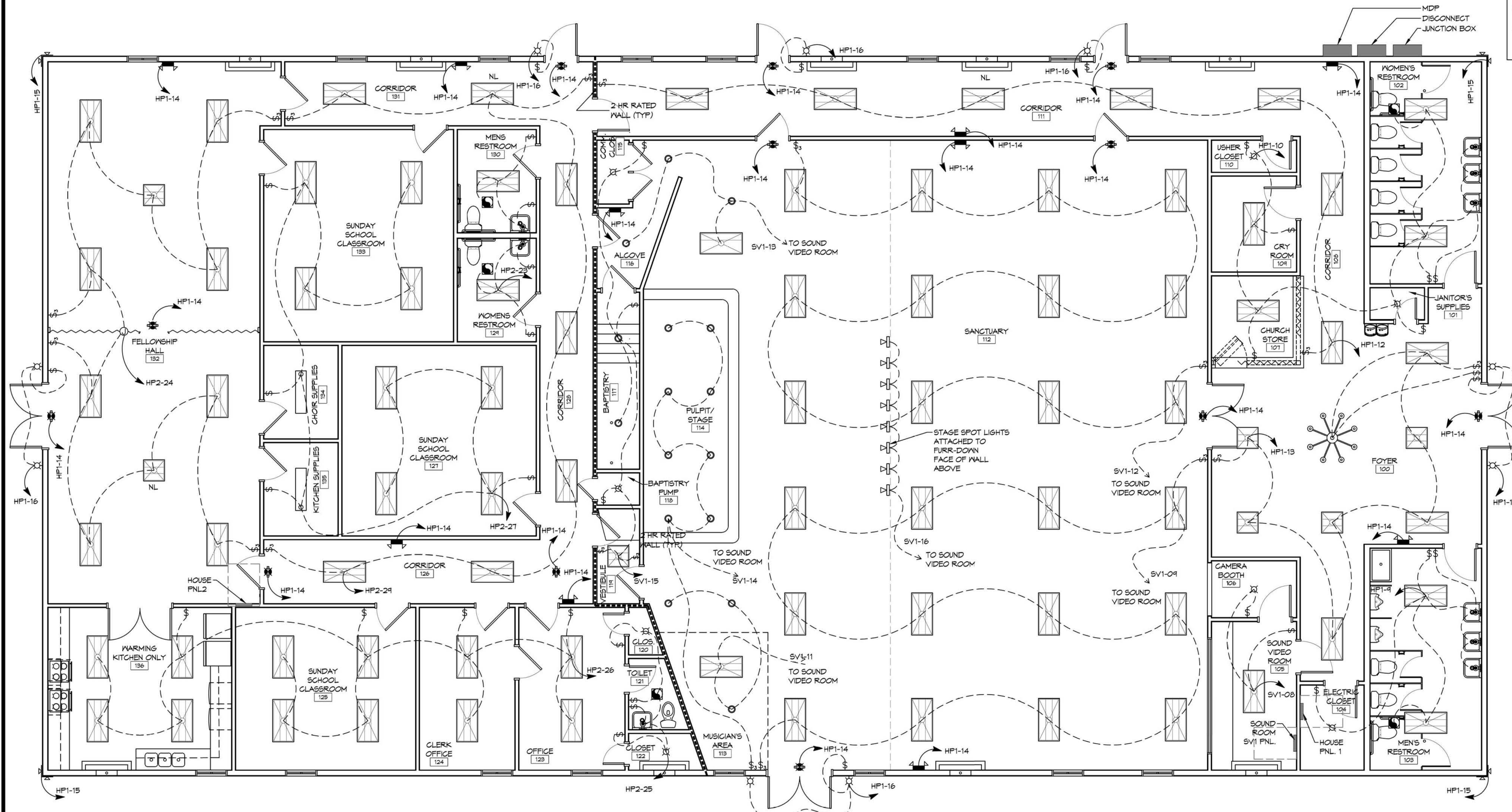
- 2x4' SUSPENDED FLUORESCENT LIGHT FIXTURE (3 - 32w BULB)
LITHONIA 26T8 3 32 A12
- 2x2' SUSPENDED FLUORESCENT LIGHT FIXTURE (2 BULB 51w)
LITHONIA 26TL2 33L A19 LP840
- DIRECTIONAL STAGE LIGHT (75w LED)
- EMERGENCY LIGHT FIXTURE (12w)
- EXIT LIGHT FIXTURE - WALL MOUNTED (10w)
- EXIT LIGHT FIXTURE - CEILING MOUNTED (10w)
- LED WALL MOUNTED LIGHT FIXTURE WITH 40 MIN. BACK-UP (75w)
- RECESSED CEILING LIGHT FIXTURE (90w)
- WALL-MOUNTED VANITY LIGHT FIXTURE (100w)
- CEILING MOUNTED LIGHT FIXTURE (100w)
- CEILING MOUNTED FLUORESCENT STRIP FIXTURE (2 - 32w BULB)
- LED EXTERIOR MOTION ACTIVATED FLOOD LIGHT WITH PE-PHOTO TIMER (240w)
- CHANDELIER LIGHT FIXTURE (8 BULB (32w) TOTAL)
- LP ELECTRIC PANEL BOARD
- CIRCUIT HOME RUN
- LIGHT SWITCH 120V COMMERCIAL GRADE
- LIGHT SWITCH - 3-WAY 120V COMMERCIAL GRADE
- LIGHT SWITCH - DIMMER 120V COMMERCIAL GRADE
- VENT/LIGHT COMBO UNIT (23w), SEE MECHANICAL
- VENT/EXHAUST FAN ONLY, SEE MECHANICAL SHEET

GENERAL LIGHTING NOTES

1. ALL WORK SHALL COMPLY WITH APPLICABLE NATIONAL, STATE, AND LOCAL CODES, RULES, REGULATIONS, AND REQUIREMENTS OF THE SERVICE UTILITY COMPANY.
2. REFER TO ARCHITECTURAL DRAWINGS FOR EXACT LOCATION AND MOUNTING INSTRUCTIONS FOR ALL LIGHT FIXTURES. NOTIFY THE ARCHITECT AND ENGINEER OF ANY DISCREPANCIES BETWEEN THESE PLANS AND THE ARCHITECTURAL PLANS RELATING TO QUANTITY, TYPE AND LOCATION OF DEVICES AND/OR FIXTURES.
3. WHEN SPECIFIC LIGHT FIXTURE HAS BEEN SPECIFIED IN THE FIXTURE SCHEDULE, ELECTRICAL SHALL PROVIDE COMPLETE ASSEMBLY INCLUSIVE ALL PARTS AND HARDWARE TO INSURE PROPER FUNCTIONING FIXTURE.
4. ALL CONDUCTORS SHALL BE #12 AWG UNLESS NOTED OTHERWISE.
5. ALL 120V RUNS LONGER THAN 60 FEET SHALL BE #10 AWG AND 277V RUNS LONGER THAN 150 FEET SHALL BE #10 AWG UNLESS NOTED OTHERWISE.
6. ALL CONDUCTORS SHALL BE COPPER.
7. WHERE CONDUCTOR SIZES ARE NOTED ON DRAWINGS, THAT WIRE SIZE SHALL BE THROUGH THE ENTIRE RUN UNLESS OTHERWISE NOTED.
8. MOUNTED LIGHT SWITCHES 48" AFF UNLESS NOTED OTHERWISE ON ARCHITECTURAL DRAWINGS.
9. ALL GANGED SWITCHES SHALL HAVE A COMMON SEAMLESS FACEPLATE. EACH MULTI-GANGED BOX SHALL BE NO MORE THAN SIX (6) SWITCHES WIDE. WHERE MORE THAN SIX (6) SWITCHES ARE SHOWN AT ONE (1) LOCATION, ADDITIONAL MULTI-GANGED BOXES SHALL BE STACKED AS POSSIBLE.
10. EACH DIMMER SWITCH SHALL HAVE A MATTING RATING 25% HIGHER THAN THE TOTAL WATTAGE OF ALL LIGHTS TO BE CONTROLLED BY THE DIMMER. DIMMER SIZES 600, 1000, 1500, AND 2000 WATTS. LUTRON NOVA T-STAR. WHERE SWITCHES ARE GANGED WITH DIMMERS, THE SWITCHES SHALL ALSO BE LUTRON NOVA T-STAR. FLUORESCENT AND LOW VOLTAGE DIMMERS HAL BE LUTRON NOVA T-STAR.
11. WHERE FLUORESCENT FIXTURES ARE SHOWN TO BE DIMMED, THE FIXTURES SHALL HAVE DIMMING TYPE BALLASTS WHICH ARE COMPATIBLE WITH THE SPECIFIED DIMMERS.
12. WHERE LED FIXTURES/LAMPS ARE SHOWN TO BE DIMMED, THE DIMMER SHALL BE COMPATIBLE WITH THE FIXTURE/LAMP SPECIFIED OR PROVIDED.
13. ALL EMERGENCY LIGHT FIXTURES SHALL HAVE 90 MINUTE BATTERY BACKUP WITH INTEGRAL TEST BUTTON AND SHALL BURN CONTINUOUSLY.
14. ALL FLUORESCENT FIXTURES THAT UTILIZE DOUBLE-ENDED LAMPS AND CONTAIN BALLASTS SHALL BE PROVIDED WITH A DISCONNECTING MEANS IN ACCORDANCE WITH NEC 410.73G.

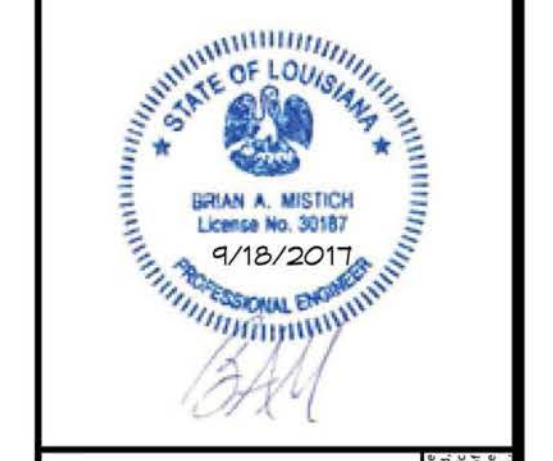
DAMMON ENGINEERING, INC.
LOUISIANA & MISSISSIPPI

www.dammonengineering.com
info@dammonengineering.com
554 Old Spanish Trail
Slidell, LA 70458
Chief Engineer: Brian Mistich, PE
PH: 985.649.5832 F: 985.641.9950



1 LIGHTING PLAN
SCALE: 3/16"=1'-0"

REVISIONS	#	DESCRIPTION	DATE



CHRISTIAN LOVE

9710 LEGGETT ROAD
SLIDELL, LA 70460

JOB No: 2295 DATE: 9/15/2017
DRAWN BY: PHM CHECKED BY: BAE

REVIEWED FOR
STATE FIRE MARSHAL
AS PER REVIEW LETTER
BY: BRAD EVERETT
Brad Everett

SHEET TITLE:
LIGHTING PLAN

DRAWING NUMBER:

E102

SHEET No: 14 of 15

PANEL SCHEDULE

PANEL:		MDF		VOLTAGE:		120/240V, 1,000 AMP, 1Ø, 3Ø			
LOCATION:		SERVICE ENTRANCE		ENCLOSURE:		SURFACE MOUNTED, NEMA 3R PNLD, 1/2" EQUIP GND BAR, 22000 AIC			
FEEDER SOURCE:		CLECO							
CKT NO	THHN WIRE SIZE	LOAD DESCRIPTION	BREAKER	LOAD (VA)	LOAD (VA)	LOAD DESCRIPTION	THHN WIRE SIZE	CKT NO	
1	#8	A/G UNIT #2 (5 TON) 15 kW HEAT	40 2	10200	10200	A/G UNIT #6 (6 TON) 15 kW HEAT	#8	2	
3				10200	10200			4	
5	#6	A/G UNIT #8 (4 TON) 10 kW HEAT	60 2	1080	1080	A/G UNIT #4 (4 TON) 10 kW HEAT	#6	6	
7				1080	1080			8	
9	2/0	PANEL SV1 - LOCATED IN SOUND/VIDEO ROOM	125 2	8,594	5292	30 GAL. WATER HEATER IN JANITOR'S SUPPLIES CLOSET FOR FRONT RESTROOMS	#6	10	
11				7,209	5292			12	
13	2/0	PANEL HP1 - LOCATED IN ELECTRICAL CLOSET	125 2	8,486	10200	A/G UNIT #1 (5 TON) 15 kW HEAT	#8	14	
15				9,551	10200			16	
17	3/0	PANEL HP2 - FELLOWSHIP HALL RM 132	225 2	24,115	10200	A/G UNIT #3 (6 TON) 15 kW HEAT	#8	18	
19				23,354	10200			20	
21	#8	EXTERIOR ISOLATED GFI 30 AMP RECEPTACLE FOR OUTSIDE COOKING	30 2	2880	10200	A/G UNIT #7 (6 TON) 15 kW HEAT	#8	22	
23				2880	10200			24	
25	#6	EXTERIOR ISOLATED GFI 50 AMP RECEPTACLE FOR OUTSIDE COOKING	50 2	4800	4500	50 GAL. WATER HEATER IN CLOSET 120 FOR BAPTISTRY REAR RESTROOMS & KITCHEN	#6	26	
27				4800	4500			28	
29	#12	SPARE	20 1	-	-	SPARE	#12	30	
				TOTAL CONNECTED LOAD (VA) = 241,041					
SOLID NEUTRAL NEUTRAL WIRE (N)				AØ = 124,961		BØ = 122,680		GROUND BUS GROUND WIRE (G)	

PANEL SCHEDULE

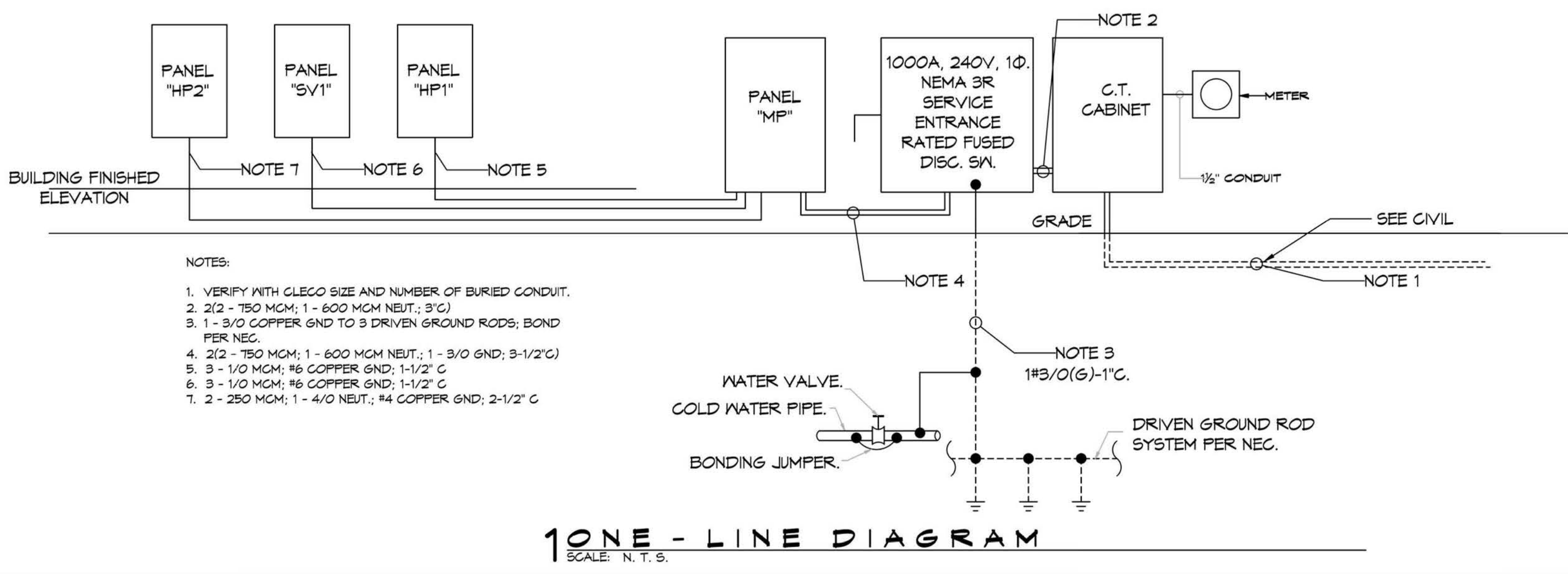
PANEL:		HP2		VOLTAGE:		120/240V, 225A, 1Ø, 3Ø			
LOCATION:		FELLOWSHIP HALL RM 132		ENCLOSURE:		RECESSED, NEMA 1, PNLD; 225A MB; 1/2" EQUIP GND BAR, 22000 AIC			
FEEDER SOURCE:		MDF							
CKT NO	THHN WIRE SIZE	LOAD DESCRIPTION	BREAKER	LOAD (VA)	LOAD (VA)	LOAD DESCRIPTION	THHN WIRE SIZE	CKT NO	
1	#8	BAPTISTRY HEATER	40 2	2750	2750	BAPTISTRY POOL PUMP	#6	2	
3				2750	2750			4	
5	#6	RANGE/OVEN RECEPTACLE	50 2	3420	3420	RANGE/OVEN RECEPTACLE	#6	6	
7				3420	3420			8	
9	#12	RECEPTACLES IN CLERK'S OFFICE 124 & CLASSROOM 125	20 1	1080	1800	DEDICATED FREEZER RECEPTACLE IN KITCHEN 136	#12	10	
11	#12	DEDICATED MICROWAVE RECEPTACLE IN KITCHEN 136	20 1	1800	1800	DEDICATED DISHWASHER RECEPTACLE IN KITCHEN 136	#12	12	
13	#12	STANDARD RECEPTACLES IN KITCHEN 136	20 1	900	1800	DEDICATED DISHWASHER RECEPTACLE IN KITCHEN 136	#12	14	
15	#12	RECEPTACLES IN FELLOWSHIP HALL 132	20 1	1260	360	DEDICATED COFFEE MAKER RECEPTACLE IN KITCHEN 136	#12	16	
17	#12	RECEPTACLES IN CORRIDOR 131 & CLASSROOM 133	20 1	1080	1260	RECEPTACLES IN PASTOR'S OFFICE 123 & CLERK'S OFFICE 124	#12	18	
19	#12	RECEPTACLES IN FELLOWSHIP HALL 132 & EXTERIOR GFI	20 1	1260	1800	DEDICATED REFRIGERATOR RECEPTACLE IN KITCHEN 136	#12	20	
21	#12	GFI RECEPTACLES IN TOILET 121 & EXTERIOR	20 1	540	1260	RECEPTACLES IN CORR. 126, CLASSROOM 121, & CORR. 125	#12	22	
23	#12	WOMENS RESTROOM 124 & MENS RESTROOM 130 LIGHTS	20 1	456	1128	FELLOWSHIP HALL 132 LIGHTS	#12	24	
25	#12	CLOSET 120, TOILET 121, & CLOSET 122 LIGHTS & EXH. FAN	20 1	228	1536	OFFICE 123, OFFICE 124, CLASSROOM 125, & KITCHEN 136 LIGHTS	#12	26	
27	#12	CLASSROOM 121, CLASSROOM 133, CHOR SUPPLY 134, & KITCHEN SUPPLY 135 LIGHTS	20 1	1152	-	SPARE	#12	28	
29	#12	CORRIDOR 126, CORRIDOR 125, & CORRIDOR 131 LIGHTS	20 1	896	-	SPARE	#12	30	
31	#12	SPARE	20 1	-	-	SPARE	#12	32	
33	#12	SPARE	20 1	-	-	SPARE	#12	34	
35	#12	SPARE	20 1	-	-	SPARE	#12	36	
37	#12	SPARE	20 1	-	-	SPARE	#12	38	
39	#12	SPARE	20 1	-	-	SPARE	#12	40	
41	#12	SPARE	20 1	-	-	SPARE	#12	42	
				TOTAL CONNECTED LOAD (VA) = 48,064					
SOLID NEUTRAL NEUTRAL WIRE (N)				AØ = 24,115		BØ = 23,354		GROUND BUS GROUND WIRE (G)	

PANEL SCHEDULE

PANEL:		HP1		VOLTAGE:		120/240V, 125A, 1Ø, 3Ø			
LOCATION:		ELECTRIC CLOSET		ENCLOSURE:		RECESSED, NEMA 1 PNLD; 125A MB; 1/2" EQUIP GND BAR, 22000 AIC			
FEEDER SOURCE:		MDF							
CKT NO	THHN WIRE SIZE	LOAD DESCRIPTION	BREAKER	LOAD (VA)	LOAD (VA)	LOAD DESCRIPTION	THHN WIRE SIZE	CKT NO	
1	#12	RECEPTACLES IN WOMENS RESTROOMS, FOYER, & ELEC. CLOSET	20 1	1260	1800	ISOLATED J-BOX BENEATH FLOOR IN CRAWLSPACE	#12	2	
3	#12	ISOLATED J-BOX IN ATTIC	20 1	1800	1260	RECEPTACLES IN THE CHURCH STORE AREA & GRY ROOM	#12	4	
5	#12	RECEPTACLES IN FOYER & SOUTH SIDE OF SANCTUARY	20 1	1260	1260	RECEPTACLES IN NORTH SIDE OF SANCTUARY & CORRIDOR 111	#12	6	
7	#12	RECEPTACLES IN SANCTUARY, CORRIDOR 111, & ALCOVE 116	20 1	900	1260	GFI RECEPT. UNDER BAPTISTRY, IN RESTROOMS, & EXTERIOR	#12	8	
9	#12	MENS 103 & ELECTRIC CLOSET 104 LIGHTS	20 1	656	1012	JANITOR 101, WOMENS 102, STORE 101, GRY RM. 104 & USHER 110 LIGHTS	#12	10	
11	#12	EXTERIOR SIGNAGE	20 1	1800	896	CORRIDORS 108 & 111 LIGHTS	#12	12	
13	#12	FOYER 100 LIGHTS	20 1	908	330	EXIT & EMERGENCY LIGHTS	#12	14	
15	#12	EXTERIOR MOTION-ACTIVATED FLOOD LIGHTS	20 1	960	675	EXTERIOR WALL-MTD. LIGHTS AT ALL DOORWAYS	#12	16	
17	#12	SPARE	20 1	-	-	SPARE	#12	18	
19	#12	SPARE	20 1	-	-	SPARE	#12	20	
21	#12	SPARE	20 1	-	-	SPARE	#12	22	
23	#12	SPARE	20 1	-	-	SPARE	#12	24	
SOLID NEUTRAL NEUTRAL WIRE (N)				TOTAL CONNECTED LOAD (VA) = 18,091		GROUND BUS GROUND WIRE (G)			
				AØ = 8,486		BØ = 9,551			

PANEL SCHEDULE

PANEL:		SV1		VOLTAGE:		120/240V, 125A, 1Ø, 3Ø			
LOCATION:		SOUND/VIDEO ROOM		ENCLOSURE:		RECESSED, NEMA 1 PNLD; 125A MB; 1/2" EQUIP GND BAR, 22000 AIC			
FEEDER SOURCE:		MDF							
CKT NO	THHN WIRE SIZE	LOAD DESCRIPTION	BREAKER	LOAD (VA)	LOAD (VA)	LOAD DESCRIPTION	THHN WIRE SIZE	CKT NO	
1	#12	STD. RECEPTACLES IN SOUND/VIDEO ROOM & CAMERA BOOTH	20 1	900	1440	UNDER-THE-COUNTER RECEPT. IN SOUND/VIDEO ROOM	#12	2	
3	#12	ABOVE-THE-COUNTER RECEPT. IN SOUND/VIDEO ROOM	20 1	1440	1080	RECEPTACLES FOR SPEAKERS, PROJECTORS, CAMERA & TV'S	#12	4	
5	#12	RECEPTACLES FOR MUSICIANS IN MUSICIAN'S AREA	20 1	720	1440	RECEPTACLES AT STAGE LIGHTS ATTACHED TO FURR-DOWN	#12	6	
7	#12	FLOOR & WALL-MTD. RECEPTACLES AT PULPIT AREA	20 1	1440	228	SOUND/VIDEO ROOM 105 & CAMERA BOOTH 106 LIGHTS	#12	8	
9	#12	SOUTH SIDE OF SANCTUARY 2x4 FLUORESCENT LIGHTS	20 1	1536	1440	UNDER-THE-COUNTER RECEPT. IN SOUND/VIDEO ROOM	#12	10	
11	#12	MUSICIAN'S AREA CAN LIGHTS & 2x4 FLUORESCENT LIGHT	20 1	398	1536	NORTH SIDE OF SANCTUARY 2x4 FLUORESCENT LIGHTS	#12	12	
13	#12	NORTH SIDE OF SANCTUARY & ALCOVE 116 FLUORESCENT LIGHT & CAN LIGHTS	20 1	398	720	CAN LIGHTS OVER PULPIT/STAGE	#12	14	
15	#12	LIGHTS IN COMM. CLOSET 116, BAPTISTRY 111, PUMP CLOSET 118, & VESTIBULE 114	20 1	481	600	STAGE SPOT LIGHTS ATTACHED TO FURR-DOWN OVER SEATING	#12	16	
17	-	SPARE	20 1	-	-	SPARE	-	18	
19	-	SPARE	20 1	-	-	SPARE	-	20	
21	-	SPARE	20 1	-	-	SPARE	-	22	
23	-	SPARE	20 1	-	-	SPARE	-	24	
SOLID NEUTRAL NEUTRAL WIRE (N)				TOTAL CONNECTED LOAD (VA) = 15,741		GROUND BUS GROUND WIRE (G)			
				AØ = 8,544		BØ = 1,203			



ELECTRICAL LOAD SUMMARY

CLECO POWER COMPANY	
PROJECT NAME:	CHRISTIAN LOVE CHURCH SLIDELL, LOUISIANA
PROJECT ADDRESS:	8710 LEGGETT ROAD
CITY/TOWN:	SLIDELL, LA 70460
INTENDED USER:	CHURCH MEMBERS
REQ SERV:	240 V 1 PHASE 2 WIRES
SERV ENTR SIZE:	1000 AMPS
HVAC TONNAGE:	36 TONS
LARGEST MOTOR:	HP
(NOTE: MOTORS ABOVE 20HP MAY REQUIRE REDUCED VOLTAGE STARTING AND ARE NEVER RECOMMENDED FOR USE W/ 120/240V, 1Ø, 3Ø SERVICE)	
TOTAL BUILDING SQ FT:	9293 SF
LOAD SOURCE	
BUILDING LIGHTING	15038
ELECTRIC WATER HEATING	24964
HEAT PUMPS	-
SUPPLEMENTAL HEAT SYSTEMS	-
PACKAGED AIR COND. UNITS	130320
COOKING	13680
REFRIGERATION	3600
RECEPTACLES (STANDARD)	48840
RECEPTACLES (COMPUTER)	-
BAPTISTRY HEATER	5500
BAPTISTRY CIRCULATION PUMP	5500
EXTERIOR LIGHTING	1635
MISCELLANEOUS - EXTERIOR SIGN(S)	1800

DAMMON

ENGINEERING, INC.

LOUISIANA & MISSISSIPPI

www.dammonengineering.com
info@dammonengineering.com
554 Old Spanish Trail
Slidell, LA 70458
PH: 985.649.5832 F: 985.641.9950

DATE: _____

REVISIONS:

#	DESCRIPTION	DATE

REVIEWED FOR STATE FIRE MARSHAL'S AS PER REVIEW LETTER BY: BRAD EVERETT

Brad Everett

STATE OF LOUISIANA
BAPTIST CHURCH

SHEET TITLE:
CIRCUIT PANELS AND ONE-LINE DIAGRAM

DRAWING NUMBER:
E103

SHEET No: 15 of 15