

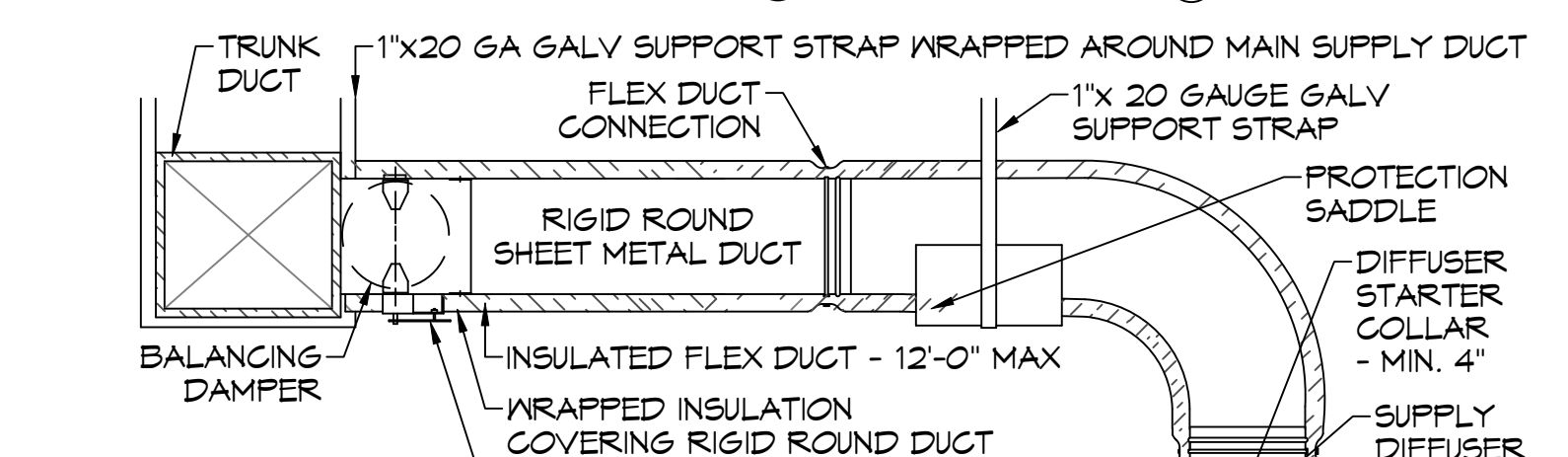
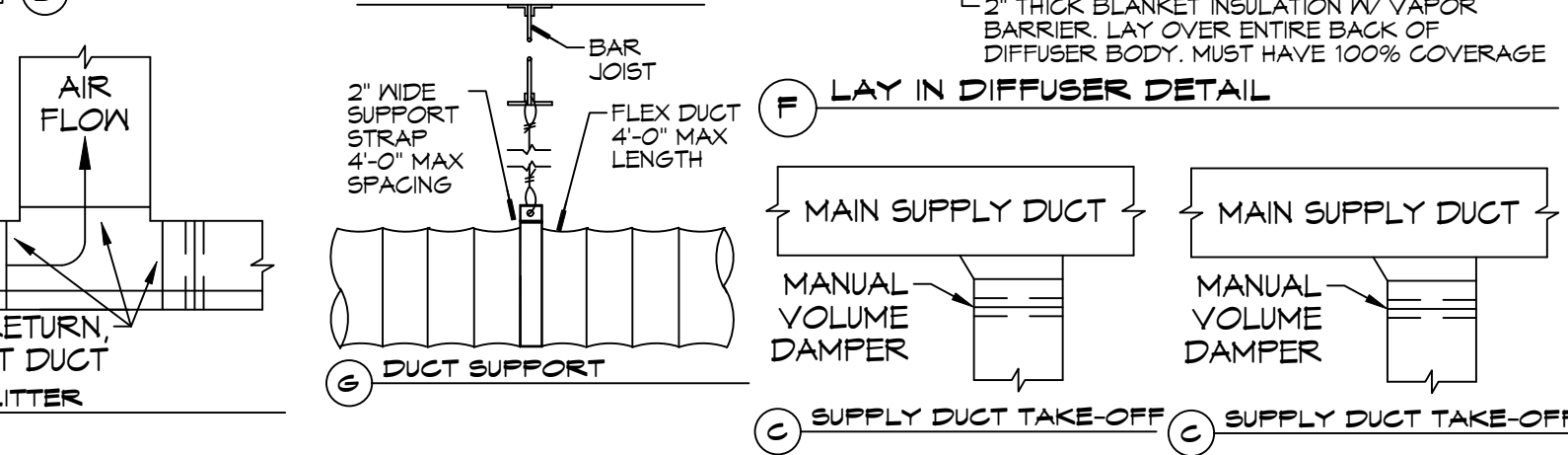
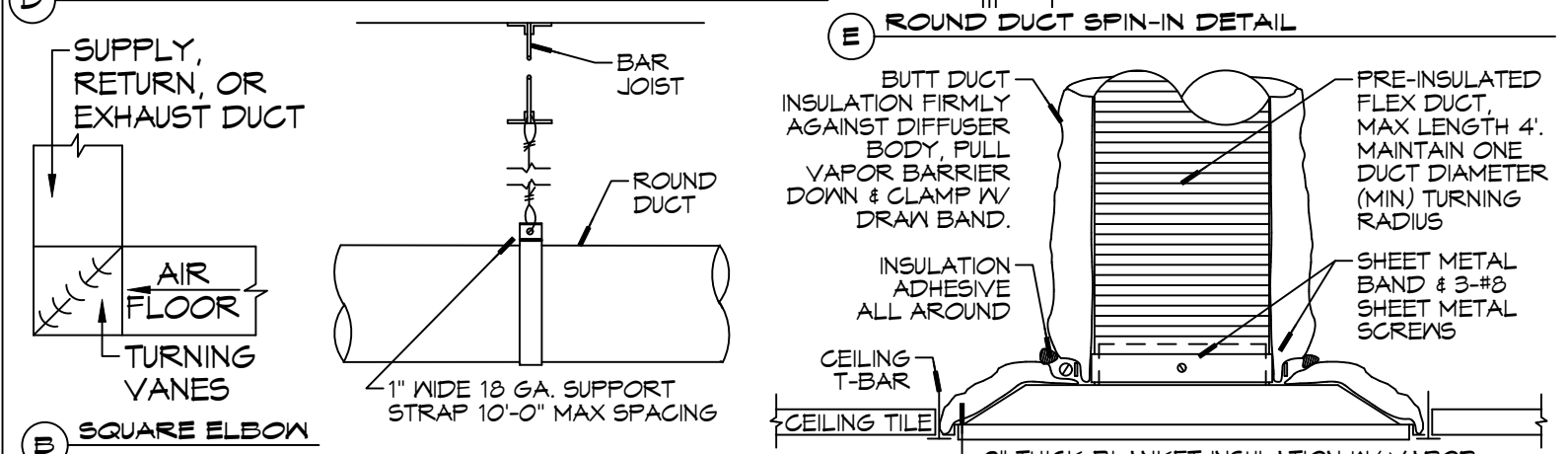
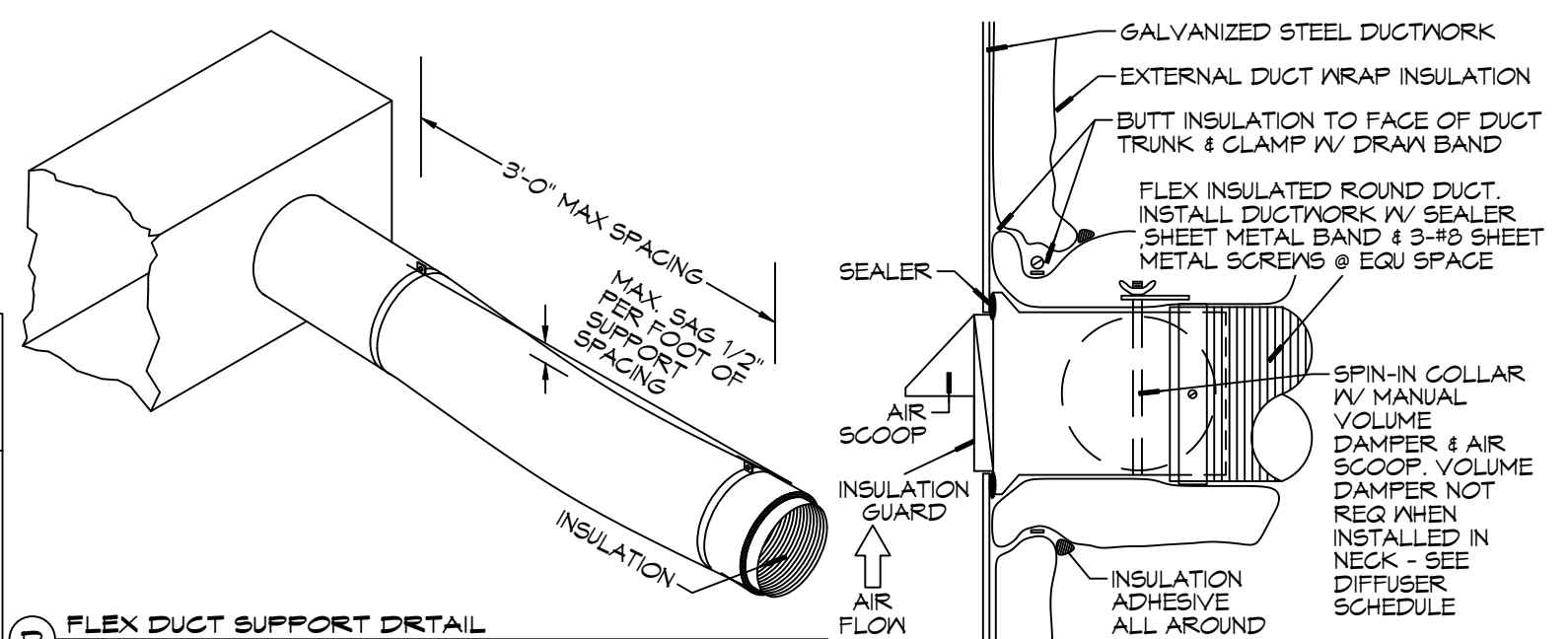
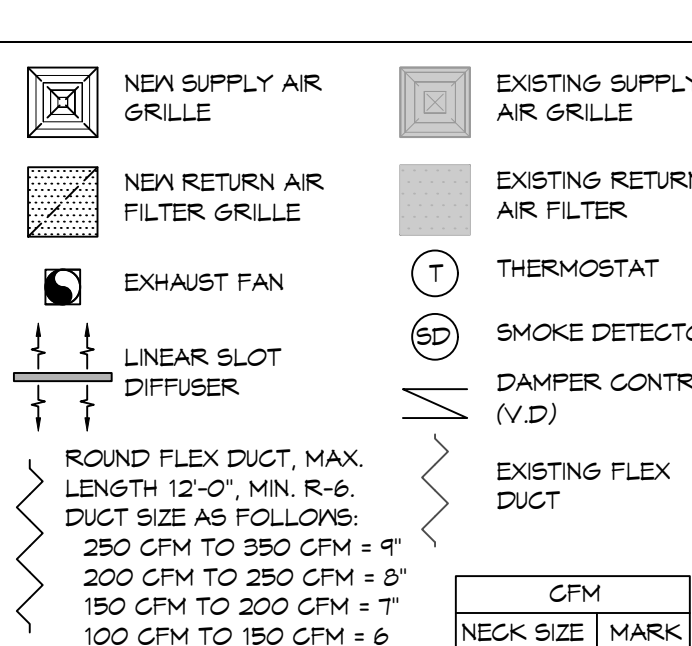
### GENERAL HVAC NOTES

1. CONCEALED DUCTWORK TO BE GALVANIZED SHEET METAL WRAPPED WITH FIBROUS GLASS DUCT WRAP WITH FSK VAPOR BARRIER, MIN R-6. INSTALLED PER SMACNA STANDARDS. DUCT WORK IMMEDIATELY DOWNSTREAM FROM RTU SHALL BE LINED FOR SOUND ATTENUATION.
2. EXPOSED DUCTWORK TO BE GALVANIZED SHEET METAL LINED WITH FIBROUS GLASS DUCT LNER, MIN R-6. INSTALLED PER SMACNA STANDARDS.
3. ROUND FLEXIBLE DUCT TO BE UL-181, CLASS 1, AIR DUCT MATERIALS.
4. DUCT SIZES SHOWN ARE CLEAR INSIDE DIMENSIONS.
5. IN ALL SYSTEMS OVER 2000 CFM AND LESS THAN 15,000 CFM, SMOKE DETECTORS SHALL BE INSTALLED IN ACCORDANCE WITH NFPA 72E IN THE RETURN DUCT DOWNSTREAM OF THE AIR HANDLING UNIT AND ALL FILTERS TO AUTOMATICALLY STOP THE FAN.
6. PROVIDE UL LISTED 125°F FIRESTAT IN RETURN AIR OF EACH SYSTEM UNDER 2000 CFM TO SHUT DOWN THE FAN IN THE EVENT OF FIRE.
7. PROVIDE UL RATED FIRE DAMPERS WHERE REQUIRED AT ALL DUCT PENETRATIONS OF FIRE-RATED ASSEMBLIES AND WHERE REQUIRED BY CODE, INCLUDING OUTSIDE AIR INTAKES AND EXHAUST FANS.
8. CONDENSATE DRAINS TO BE PVC PIPE RUN TO PLUMBERS P-TRAP WITHIN FIVE FEET OF AIR HANDLING UNITS.
9. ALL AIR HANDLING SYSTEMS TO BE BALANCED TO ASSURE PROPER AIR FLOWS PER PLANS.
10. THERMOSTATS TO BE AUTOMATIC CHANGEOVER WITH HEAT SWITCH.
11. EXHAUST FAN SHALL BE CONTROLLED BY A SWITCH ON THE WALL IN THE SAME LOCATION AS LIGHT SWITCH(S). PROVIDE BACK DRAFT DAMPER.
12. PROVIDE AND INSTALL WATER PROOF GRILLE VENT IN PROPER ROOF LOCATION FOR PLUMBING FIXTURE EXHAUST.
13. ALL SUPPLY AIR VENTS SHALL BE EQUIPPED WITH AIR CONTROL DAMPERS AT THE REGISTER.
14. LOCATE OUTDOOR UNITS AS SHOWN ON ARCHITECTURAL DRAWINGS.
15. REFRIGERANT LINES SHALL BE SIZED BY UNIT MANUFACTURER AND INSTALLED ACCORDING TO MANUFACTURER'S INSTRUCTIONS.
16. FRESH AIR SHALL BE SUPPLIED TO EACH AIR HANDLER THROUGH EXTERIOR WALL DUCT SUPPLIED WITH A CONTROL DAMPER.
17. ALL ELECTRICAL, MECHANICAL, AND PLUMBING PENETRATING FIRE WALLS SHALL BE FIRE CAULKED. (PENETRATIONS THROUGH RATED CONSTRUCTION SHALL BE SEALED WITH A MATERIAL CAPABLE OF PREVENTING THE PASSAGE OF FLAMES AND HOT GASES WHEN TESTED IN ACCORDANCE WITH ASTM-E-141).
18. ALL MECHANICAL SYMBOLS ARE DRAWN DIAGRAMMATICALLY. CONTRACTOR TO VERIFY WITH OWNER LOCATIONS OF VENTS, DAMPERS, REGISTERS, ETC.
19. FLEXIBLE DUCTWORK LENGTH NOT TO EXCEED 12'-0". SUPPORT FLEX DUCT TO PREVENT SAGGING.

### GENERAL HVAC NOTES

20. REFER TO REFLECTED CEILING PLAN FOR FINAL GRILLE AND DIFFUSER LOCATIONS AND COORDINATE AS REQUIRED.
21. FINAL LOCATION OF TEMPERATURE CONTROLS TO BE COORDINATED WITH OWNER AT JOB SITE.
22. PROVIDE AND INSTALL SMOKE DETECTORS AS APPROVED BY LOCAL AHJ. PLACE NEAR R/A AND S/A OPENINGS OF AHU AND PROVIDE, WITH ACCESS PANEL, WIRING BY ELECTRICAL CONTRACTOR.
23. FRESH AIR INTAKES ARE REQUIRED TO HAVE MOTORIZED OR GRAVITY DAMPERS TO SHUT OFF WHEN SYSTEM IS NOT RUNNING.
24. PROVIDE BIRD SCREENS AT ALL EXTERIOR MECHANICAL PENETRATIONS.
25. COORDINATE WALL MOUNTED THERMOSTAT LOCATIONS WITH ALL OWNER FURNISHED ITEMS EITHER WALL MOUNTED OR FLOOR MOUNTED AGAINST PARTITIONS. REFER TO ARCHITECTURAL DRAWINGS.
26. PROVIDE MIN 18 GA GALVANIZED SHEET METAL TO BLANK-OFF GABLE VENTS WHERE INTAKE/EXHAUST DUCTS OCCUR.

### MECHANICAL LEGEND



NOTES:  
 1. PROVIDE @ FLEX DUCT CONNECTION "FANDUIT" DRAM BAND ON THE INTERIOR OF FLEX DUCT HELIX.  
 2. PROVIDE MIN 4" COLLARS FOR ATTACHING FLEX DUCT TO RIGID DUCT, DAMPERS, & DIFFUSERS.  
 3. BAND RIGID ROUND DUCT INSULATION TO DUCT & PROVIDE TAPE FOR INSULATION OVERLAP.  
 4. DIFFUSER CONNECTION DETAIL - FLEX DUCT

### TYPICAL DETAILS

SCALE: N.T.S.

EXHAUST FAN SCHEDULE										
TAG	FAN				POWER			MAKE / MODEL	REMARKS	
	AIRFLOW (CFM)	SERVICE	TSP ("wc)	AMPS	WATTS	VAC	PH			HZ
EF-1	80	Restroom	0.1	0.4		120	1	60	Broan A80	1
EF-2	30	Janitor Closet	0.2	0.9		120	1	60	Broan 696N	1
EF-3	50	Bio Hazard	0.8	0.9	26	120	1	60	Cook GC-148	1

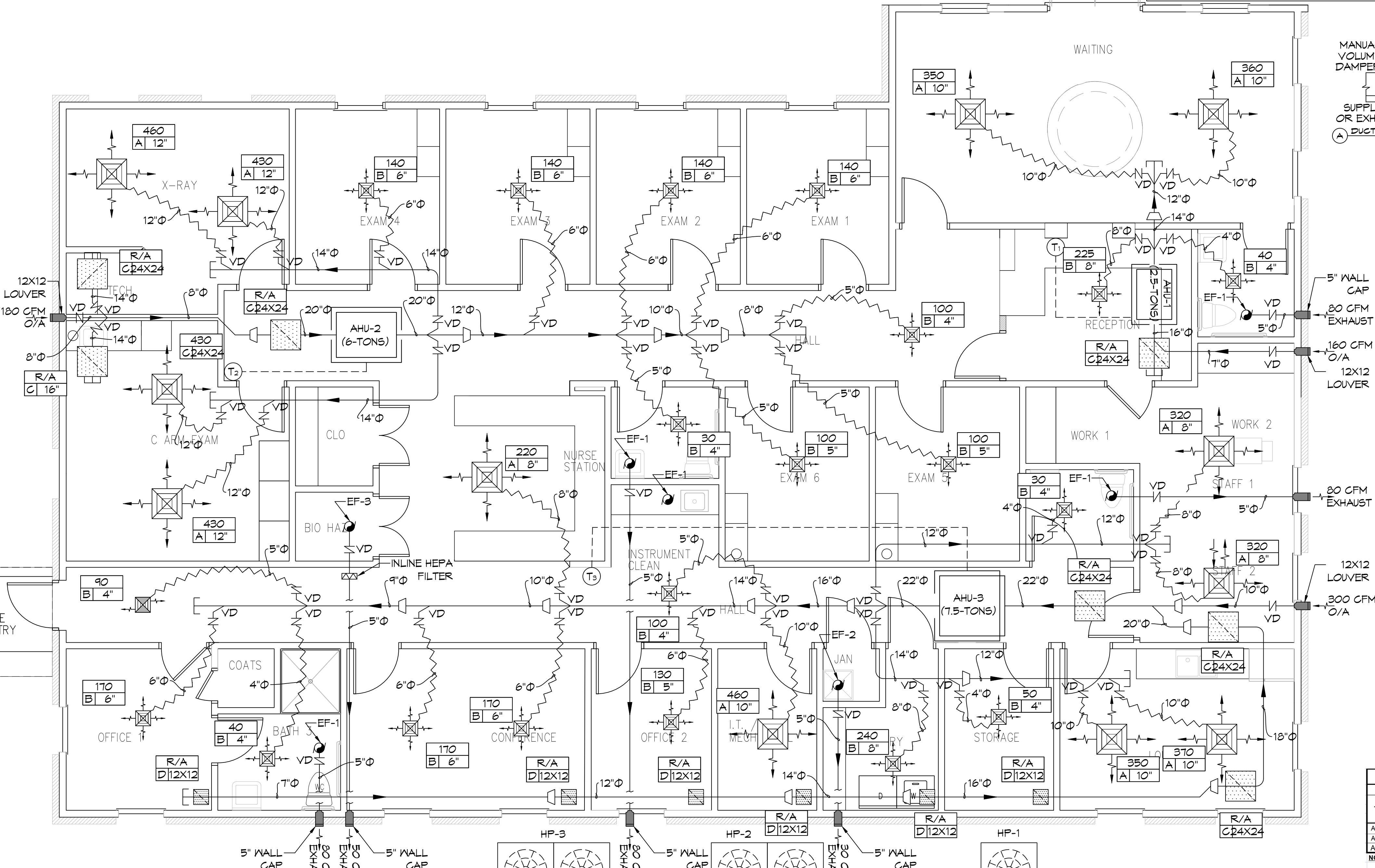
1. Install per Manufacturer's recommendations.

DIFFUSER SCHEDULE				
TAG	SERVICE	NECK SIZE	DESCRIPTION	Remarks
A	Supply Air	Ref. Plan	24" x 24" Adjustable Square Cone Diffuser, Price ASCDA or equal w/ Insulated Back Panel	1, 2, 3
B	Supply Air	Ref. Plan	12" x 12" Adjustable Square Cone Diffuser, Price ASCDA or equal w/ Insulated Back Panel	1, 2, 3
C	Return Air	Ref. Plan	24" x 24" Louvered Face Filter Return Air Grille, Price 70 FH or equal w/ MERV 8 filter.	1, 2, 3
D	Return Air	Ref. Plan	12" x 12" Louvered Face Filter Return Air Grille, Price 70 FH or equal w/ MERV 8 filter.	1, 2, 3

NOTES:  
 1. Seal outer perimeter of diffusers/grilles to prevent moisture migration from attic space.  
 2. Coordinate with owner / architect for color and finish.  
 3. R value of insulated back panels to meet or exceed R-6.

DX SPLIT SYSTEM SCHEDULE																		
TAG	MAKE	MODEL	AIR HANDLER				HEAT PUMP				REMARKS							
			NOMINAL TONS	TOTAL AIRFLOW (CFM)	O/A AIR (CFM)	ESP ("wc)	HEAT (KW)	POWER (KW)	TAG	NOMINAL TONS		MAKE	MODEL	POWER (KW)				
AHU-1	Trane	5TMCB03A	2-1/2	975	160	0.4	3.6	208	1	27	HP-1	2-1/2	Trane	5TWR5030A	208	1	16	1, 2
AHU-2	Trane	TWE072K3B	6	2640	180	0.5	5	208	3	24	HP-2	6	Trane	TWA072K3	208	3	35	1, 2
AHU-3	Trane	TWE090K3B	7-1/2	3230	200	0.5	7.4	208	3	35	HP-3	7-1/2	Trane	TWA090K3	208	3	38	1, 2

NOTES:  
 1. Provide single point power connection, time delay relay, condensate overflow switch & programmable 7/24 thermostat.  
 2. Cooling capacities to be rated in accordance with AHRI standard 210/290 for ASHRAE standard design weather conditions in New Orleans, LA.



25 MECHANICAL PLAN  
 SCALE: 3/16" = 1'-0"

# DAMMON ENGINEERING, INC.

LOUISIANA & MISSISSIPPI

Chief Engineer: Brian Metch, PE  
 554 Old Spanish Trail  
 Slidell, LA 70458  
 info@dammonengineering.com  
 985.649.5832

DATE	DESCRIPTION	REVISIONS
9/9/2022	1 Revised HVAC Placement	
4/9/2022	2 Added Exam Rooms 12 & 13	
7/17/2022	3 Revised Exam Rm's & X-Ray Layout	
10/04/2022	4 Balanced CFM's & moved casting room supply	

10/4/2022

FINAL PRACTICE

# KEVIN DARR, M.D.

SHEET TITLE: MECHANICAL PLAN

DRAWING NUMBER: M101

SHEET No: 20 of 22