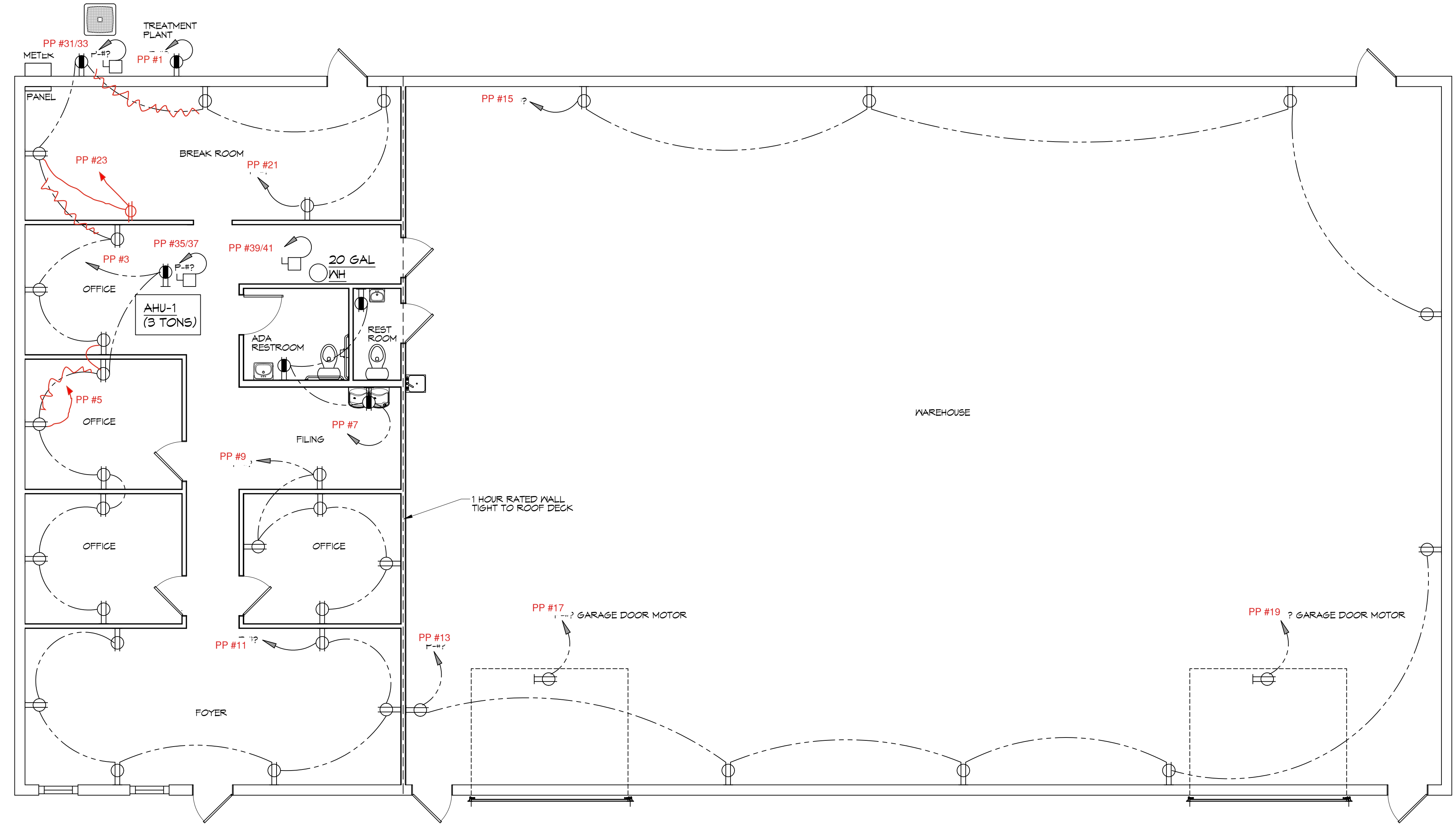


FILE NAME: C:\Users\Bian Mistich\OneDrive\Documents\28 Power Plan\28 Power Plan.dwg - Date: 11/12/2026 - 11:12:2026



GENERAL POWER NOTES

1. ALL WORK SHALL CONFORM TO THE LATEST EDITION OF THE NATIONAL ELECTRICAL CODE, THE GOVERNING ELECTRICAL CODE AND ALL OTHER INSPECTION DEPARTMENTS HAVING JURISDICTION. OBTAIN CERTIFICATES OR APPROVAL WHERE REQUIRED. ELECTRICAL CONTRACTOR SHALL VERIFY ALL WIRE AND CONDUIT SIZES FOR MECHANICAL EQUIPMENT TO BE INSTALLED.
2. ALL MATERIALS FURNISHED SHALL BE NEW AND SHALL BE U.L. LISTED.
3. THE DRAWINGS INDICATE SIZE AND GENERAL LOCATION OF WORK. SCALE DIMENSIONS SHALL NOT BE USED. THE EXACT LOCATION OF ALL LIGHTING FIXTURES, RECEPTACLES AND TELEPHONE OUTLETS, ETC. SHALL BE DETERMINED BY ACTUAL CONDITIONS IN THE FIELD.
4. PRIOR TO BIDDING, CONTRACTOR SHALL VISIT THE JOB SITE AND FAMILIARIZE THEMSELVES WITH THE EXISTING CONDITIONS.
5. ELECTRICAL CONTRACTOR SHALL COORDINATE HIS WORK WITH OTHER TRADES AND WITH OTHER CONTRACTORS WHOSE WORK MAY AFFECT THIS INSTALLATION.
6. ELECTRICAL CONTRACTOR SHALL COORDINATE COMING ELECTRICAL SERVICE WITH UTILITY COMPANY AND INCLUDE IN HIS BID ALL CHARGES AND FEES INCURRED IN MODIFICATIONS.
7. ELECTRICAL CONTRACTOR SHALL COORDINATE THE TELEPHONE INSTALLATION WITH THE TELEPHONE COMPANY AND THE GENERAL CONTRACTOR.
8. WHERE MORE THAN ONE SWITCH OCCURS IN THE SAME LOCATION, THEY SHALL BE INSTALLED IN A GANG TYPE BOX UNDER ONE COVER PLATE.
9. ELECTRICAL CONTRACTOR, BEFORE INSTALLING ANY OF THE WORK, SHALL SEE THAT IT DOES NOT INTERFERE WITH CLEARANCES REQUIRED FOR FINISHED COLUMNS, HUNG CEILINGS, PLASTER, PARTITIONS, WALLS, ETC. AS SHOWN IN THE ARCHITECTURAL DRAWINGS AND DETAILS. IF ANY WORK IS INSTALLED AND IT LATER DEVELOPS THAT SUCH DETAILS OR DESIGN CANNOT BE FOLLOWED, THE CONTRACTOR, AT HIS OWN EXPENSE, SHALL MAKE SUCH CHANGES IN THE WORK AS DIRECTED BY THE ARCHITECT, AS WELL AS TO PERMIT THE INSTALLATION OF THE ARCHITECTURAL WORK AS SHOWN ON THE PLANS AND DETAILS.
10. PERFORM TEST REQUIRED BY THE OWNER OR THE ENGINEER IN CONNECTION WITH THE OPERATION OF THE ELECTRICAL SYSTEM IN THE BUILDING. ALL TESTS SHALL BE MADE IN ACCORDANCE WITH THE LATEST STANDARD OF THE IEEE AND THE NATIONAL ELECTRICAL CODE.
11. MINIMUM CONDUCTOR SIZE SHALL BE #12, 600V INSULATION, MINIMUM SIZE CONDUIT SHALL BE 3/4" ELECTRICAL METALLIC TUBING (EMT) FOR INTERIOR USE, AND 3/4" RIGID ALUMINUM FOR EXTERIOR USE. USE NON-METALLIC CABLE (NMC) CABLE COPPER, FOR LIGHTS AND RECEPTACLE CIRCUITS IN WOOD FRAME CONSTRUCTION AREAS ONLY; IN STEEL FRAMING AREAS THE USE OF EMT (MINIMUM) IS REQUIRED; EXTERIOR FITTINGS SHALL BE CAST BOXES AND COVERS. INTERIOR FITTINGS SHALL BE STAMPED BOXES.
12. CONTRACTOR SHALL INSTALL WIRING AND OTHER CIRCUIT COMPONENTS TO MATCH EQUIPMENT ACTUALLY INSTALLED.
13. INSTALL GROUND FAULT RECEPTACLES AT RECEPTACLE LOCATIONS WITHIN 5' OF SINKS OR LAVATORIES, AND AT EXTERIOR LOCATIONS. EXTERIOR RECEPTACLES SHALL ALSO BE WATERPROOF.
14. BONDING AND GROUNDING SHALL BE IN ACCORDANCE WITH NFPA 70:250-63, NFPA 70:250-23, 250-11 & 250-12.
15. GROUND NEUTRAL IN ACCORDANCE WITH NFPA 70:250-230.
16. FUSES SHALL BE ITC CLASS K5, 250 VOLT, 200,000 AMP INTERRUPTING CAP.
17. PROVIDE SERVICES OF A FIRE/SMOKE DETECTION AND ALARM COMPANY TO DESIGN AND INSTALL ALARM SYSTEM TO MEET REQUIREMENTS OF THE STATE FIRE MARSHALL AND THE FIRE DISTRICT.
18. EXTERIOR LIGHTING SHALL BE SHADED OR INWARDLY DIRECTED IN SUCH A MANNER SO THAT DIRECT LIGHTING OR GLARE IS CAST BEYOND THE PROPERTY LINE. THE INTENSITY OF SUCH LIGHTING SHALL NOT EXCEED ONE FOOT CANDLE AS MEASURED AT THE ADJUTING PROPERTY LINE.
19. ALL ELECTRICAL, MECHANICAL AND PLUMBING PENETRATING FIRE PARTITIONS SHALL BE FIRE CAULKED. (PENETRATIONS THROUGH RATED CONSTRUCTION SHALL BE SEALED WITH A MATERIAL CAPABLE OF PREVENTING THE PASSAGE OF FLAMES AND HOT GASES WHEN TESTED IN ACCORDANCE WITH ASTM-E814.)
20. VERIFY ELECTRICAL CONNECTIONS PER MANUFACTURER'S RECOMMENDATIONS.
21. ALL RECEPTACLES AND SWITCHES ARE TO HAVE WEATHER PROOF COVERS IN APPARATUS BAY. 50% OF ALL EXTERIOR WEATHER PROOF COVERS SHALL BE IN-USE COVERS.

LEGEND

SYMB	DESCRIPTION
⊕	STANDARD 120V DUPLEX RECEPTACLE, NEMA 5-2 OR 15' AFF (UNLESS OTHERWISE NOTED)
⊖	SINGLE-POLE DEDICATED RECEPTACLE - REFER TO PANEL SCHEDULE FOR CIRCUIT SIZE
⊕⊖	GFCI DUPLEX RECEPTACLE
⊕⊖⊕⊖	GFCI QUAD RECEPTACLE
⊕⊕	220V ELECTRIC DRYER RECEPTACLE - MOUNTED AT 30" AFF
⊕⊖⊕	220V DEDICATED GFCI RECEPTACLE
⊕⊖⊕⊖	WEATHER-PROOF GFCI DUPLEX RECEPTACLE MOUNTED AT 30" AFF (UNLESS OTHERWISE NOTED)
⊕	STANDARD 120V DUPLEX RECEPTACLE - FLOOR MOUNTED
⊕⊖	STANDARD QUAD RECEPTACLE - WALL-MOUNTED
⊕⊖⊕⊖	STANDARD QUAD RECEPTACLE - FLOOR MOUNTED
⊕⊕⊕	125V 15 AMP DUPLEX-USB 5VDC 3 AMP HUBBELL USB CHARGER RECEPTACLE
⊕⊕⊕⊕	125V 15 AMP QUAD-USB 5VDC 3 AMP HUBBELL USB CHARGER RECEPTACLE
⊙	JUNCTION BOX
⊕	GENERATOR BATTERY CHARGER GFI OUTLET
⊕	2-BUTTON PUSH BUTTON STATION
⊕	COAX-CABLE CONNECTION FOR TELEVISION
⊕	WALL MOUNTED DATA OUTLET
⊕	FLOOR DATA OUTLET
⊕	POWER DISCONNECT
⊕	WATER HEATER ON DECK OR MEZZANINE ABOVE - SIZE AS NOTED ON PLAN
⊕	AIR CONDITIONING AIR HANDLING UNIT ON DECK OR MEZZANINE ABOVE, SEE MECHANICAL DRAWINGS
⊕	AIR CONDITIONING CONDENSER UNIT ON CONCRETE PAD, SEE MECHANICAL DRAWINGS

- NOTES:**
1. CONNECT ALL EMERGENCY/EXIT LIGHT FIXTURES TO NEAREST CONSTANT POWER SOURCE.
 2. CAULK ALL PENETRATIONS WITH FIRE CAULK.

#	DESCRIPTION	DATE

SEAL:

NEW OFFICE WAREHOUSE

LEWIS A/C
33104 COAST BOULEVARD
SLIDELL, LA 70460

SHEET TITLE:
POWER PLAN

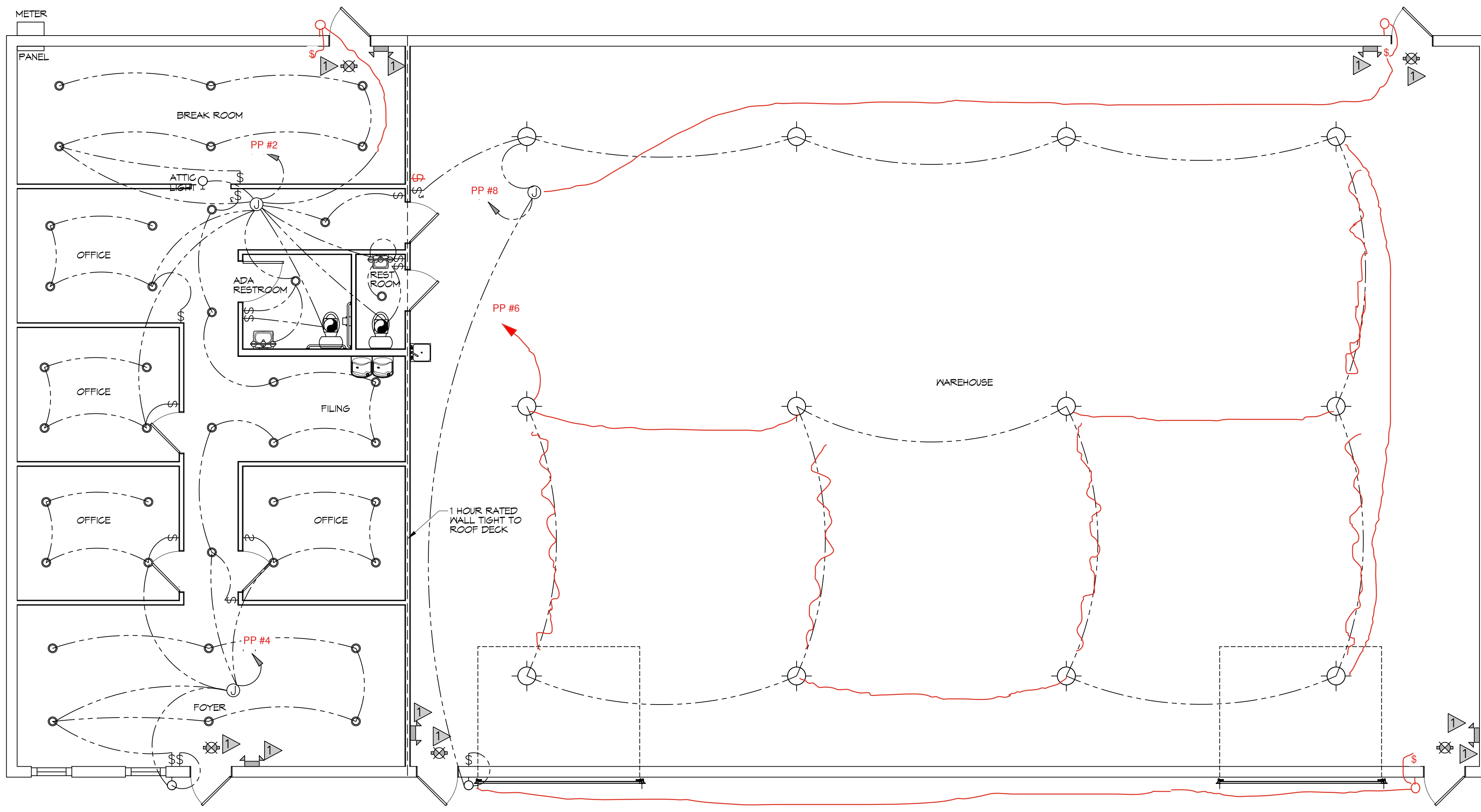
DRAWING NUMBER:
E101

DAMMON ENGINEERING, INC.
LOUISIANA & MISSISSIPPI

Chief Engineer: Brian Mistich, PE
554 Old Spanish Trail
Slidell, LA 70459

www.dammonengineering.com
info@dammonengineering.com
PH: 985.649.5832

FILE NAME: J:_0100_warehouse\0100_warehouse.dwg DATE: 11/12/2026 10:46:07



28 LIGHTING PLAN
SCALE: 3/16"=1'-0"

GENERAL LIGHTING NOTES

- ALL WORK SHALL COMPLY WITH APPLICABLE NATIONAL, STATE, AND LOCAL CODES, RULES, REGULATIONS, AND REQUIREMENTS OF THE SERVICE UTILITY COMPANY.
- GENERAL CONTRACTOR SHALL NOTIFY THE ARCHITECT IMMEDIATELY IF ANY CONFLICTS OCCUR BETWEEN LIGHTING AND ANY OTHER TRADE. DO NOT PROCEED WITH INSTALLATION IN THAT AREA UNTIL CONFLICT HAS BEEN RESOLVED TO THE SATISFACTION OF THE ARCHITECT AND ENGINEER.
- REFER TO ARCHITECTURAL DRAWINGS FOR EXACT LOCATION AND MOUNTING INSTRUCTIONS FOR ALL LIGHT FIXTURES. NOTIFY THE ARCHITECT AND ENGINEER OF ANY DISCREPANCIES BETWEEN THESE PLANS AND THE ARCHITECTURAL PLANS RELATING TO QUANTITY, TYPE AND LOCATION OF DEVICES AND/OR FIXTURES.
- WHEN SPECIFIC LIGHT FIXTURE HAS BEEN SPECIFIED IN THE FIXTURE SCHEDULE, ELECTRICAL CONTRACTOR SHALL PROVIDE COMPLETE ASSEMBLY INCLUSIVE ALL PARTS AND HARDWARE TO INSURE PROPER FUNCTIONING FIXTURE.
- ALL CONDUCTORS SHALL BE A MINIMUM OF #12 AWG UNLESS NOTED OTHERWISE.
- ALL 120V RUNS LONGER THAN 60 FEET SHALL BE #10 AWG AND 277V RUNS LONGER THAN 150 FEET SHALL BE #10 AWG UNLESS NOTED OTHERWISE.
- ALL CONDUCTORS SHALL BE COPPER.
- WHERE CONDUCTOR SIZES ARE NOTED ON DRAWINGS, THAT WIRE SIZE SHALL BE THROUGH THE ENTIRE RUN UNLESS OTHERWISE NOTED.
- MOUNTED LIGHT SWITCHES 48" AFF UNLESS NOTED OTHERWISE ON ARCHITECTURAL DRAWINGS.
- WHERE MORE THAN ONE SWITCH OCCURS IN THE SAME LOCATION, THEY SHALL BE INSTALLED IN A GANG TYPE BOX UNDER ONE COVER PLATE. ALL GANGED SWITCHES SHALL HAVE A COMMON SEAMLESS FACEPLATE. EACH MULTI-GANGED BOX SHALL BE NO MORE THAN SIX (6) SWITCHES WIDE. WHERE MORE THAN SIX (6) SWITCHES ARE SHOWN AT ONE (1) LOCATION, ADDITIONAL MULTI-GANGED BOXES SHALL BE STACKED VERTICALLY AND THE WIDTH OF THE MULTI-GANGS SHALL BE AS EVEN AS POSSIBLE.
- EACH DIMMER SWITCH SHALL HAVE A WATTAGE RATING 25% HIGHER THAN THE TOTAL WATTAGE OF ALL LIGHTS TO BE CONTROLLED BY THE DIMMER. DIMMER SIZES 600, 1000, 1500, AND 2000 WATTS, LUTRON NOVA T-STAR. WHERE SWITCHES ARE GANGED WITH DIMMERS, THE SWITCHES SHALL ALSO BE LUTRON NOVA T-STAR. FLUORESCENT AND LOW VOLTAGE DIMMERS SHALL BE LUTRON NOVA T-STAR.
- ALL EMERGENCY EXIT LIGHT FIXTURES SHALL HAVE 90 MINUTE BATTERY BACKUP WITH INTEGRAL TEST BUTTON AND SHALL BURN CONTINUOUSLY.
- ALL FLUORESCENT FIXTURES THAT UTILIZE DOUBLE-ENDED LAMPS AND CONTAIN BALLASTS SHALL BE PROVIDED WITH A DISCONNECTING MEANS IN ACCORDANCE WITH NEC 410.135.

KEYED NOTES

- PROVIDE CONNECTION TO UN-SWITCHED HOT OF LIGHTING CIRCUIT AND SHALL HAVE 90 MINUTE EMERGENCY BATTERY BACKUP.

THIS WORK SHALL MEET ALL ELECTRICAL CODES

- 2020 NATIONAL ELECTRICAL CODE
- NFPA 70
- 2021 IECC ENERGY CODE

LIGHTING LEGEND

- EXIT LIGHT FIXTURE - CEILING MOUNTED
- EMERGENCY LIGHT - WALL MOUNTED
- VANITY LIGHT
- EXTERIOR WALL MOUNT LIGHT
- JUNCTION BOX
- RECESSED CAN LIGHT
- EXHAUST FAN
- LOW BAY HANGING LED LIGHT

DAMMON ENGINEERING, INC.
LOUISIANA & MISSISSIPPI

www.dammonengineering.com
info@dammonengineering.com
554 Old Spanish Trail
Slidell, LA 70468
Chief Engineer: Brian Mistich, PE

#	DESCRIPTION	DATE

SEAL:

NEW OFFICE WAREHOUSE

LEWIS A/C

33104 COAST BOULEVARD
SLIDELL, LA 70460

DATE: 11-12-2026
DRAWN BY: [Signature]
CHECKED BY: [Signature]

SHEET TITLE:
LIGHTING PLAN

DRAWING NUMBER:
E102

SHEET No: 12 of 1

DX SPLIT SYSTEM SCHEDULE

AIR HANDLER												CONDENSER						REMARKS
TAG	MAKE	MODEL	NOMINAL TONS	TOTAL CFM	Motor HP	ESP (" WC)	HEAT (Kw)	POWER			TAG	NOMINAL TONS	MAKE	MODEL	POWER			
								VAC	PH	MCA					VAC	PH	MCA	
AHU-1	Trane	5TEM4D04AC31S	3	1200	1/2	0.4	10.8	208	1	42	CU-1	3	Trane	5TTR5036A1000	208	1	18	1, 2

NOTES:

1. Provide single point power connection, time delay relay, condensate overflow switch & programmable 7/24 thermostat.
2. Cooling capacities to be rated in accordance with AHRI standard 210/290 for ASHRAE standard design weather conditions in New Orleans, LA.

DIFFUSER SCHEDULE

TAG	SERVICE	NECK SIZE	DESCRIPTION
A	Supply Air	Ref. Plan	12"x 12" Adjustable Square Cone Diffuser, Price ASCDA w/ Insulated Back Panel
B	Return Air	Ref. Plan	20" x 20" Perforated Ceiling Return Grille, Price PDR

Notes:

1. Seal around perimeter of diffusers/grilles to prevent moisture migration from attic space
2. Coordinate with owner / architect for color and finish
3. R value of insulated back panels to exceed R-6

Exhaust Fan Schedule

Tag	Fan		Power				Make / Model	Remarks
	Airflow (CFM)	TSP (" wc)	Amps	Volts	Phase	Hz		
EF-1	80	0.2	0.4	120	1	60	Broan A80	1, 2, 3
EF-2	50	0.2	0.2	120	1	60	Broan AE50	1, 2, 3

1. Interlock with light switch
2. Furnish with backdraft damper.
3. Install per Manufacturer's recommendations.

GENERAL HVAC NOTES

1. CONCEALED DUCTWORK TO BE GALVANIZED SHEET METAL WRAPPED WITH FIBROUS GLASS DUCT WRAP WITH FSK VAPOR BARRIER, MIN R-6. INSTALLED PER SMACNA STANDARDS. DUCT WORK IMMEDIATELY DOWNSTREAM FROM RTU SHALL BE LINED FOR SOUND ATTENUATION.
2. EXPOSED DUCTWORK TO BE GALVANIZED SHEET METAL LINED WITH FIBROUS GLASS DUCT LINER, MIN R-6. INSTALLED PER SMACNA STANDARDS.
3. ROUND FLEXIBLE DUCT TO BE UL-181, CLASS 1, AIR DUCT MATERIALS.
4. DUCT SIZES SHOWN ARE CLEAR INSIDE DIMENSIONS.
5. IN ALL SYSTEMS OVER 2000 CFM AND LESS THAN 15,000 CFM, SMOKE DETECTORS SHALL BE INSTALLED IN ACCORDANCE WITH NFPA 12E IN THE RETURN DUCT DOWNSTREAM OF THE AIR HANDLING UNIT AND ALL FILTERS TO AUTOMATICALLY STOP THE FAN.
6. PROVIDE UL LISTED 125 °F FIRESTAT IN RETURN AIR OF EACH SYSTEM UNDER 2000 CFM TO SHUT DOWN THE FAN IN THE EVENT OF FIRE.
7. PROVIDE UL RATED FIRE DAMPERS WHERE REQUIRED AT ALL DUCT PENETRATIONS OF FIRE-RATED ASSEMBLIES AND WHERE REQUIRED BY CODE, INCLUDING OUTSIDE AIR INTAKES AND EXHAUST FANS.
8. CONDENSATE DRAINS TO BE PVC PIPE RUN TO PLUMBERS P-TRAP WITHIN FIVE FEET OF AIR HANDLING UNITS.
9. ALL AIR HANDLING SYSTEMS TO BE BALANCED TO ASSURE PROPER AIR FLOWS PER PLANS.
10. ALL THERMOSTATS TO BE AUTOMATIC CHANGEOVER WITH HEAT SWITCH.
11. EXHAUST FAN SHALL BE CONTROLLED BY A SWITCH ON THE WALL IN THE SAME LOCATION AS LIGHT SWITCH(S). PROVIDE BACK DRAFT DAMPER.
12. PROVIDE AND INSTALL WATER PROOF GRILLE VENT IN PROPER ROOF LOCATION FOR PLUMBING FIXTURE EXHAUST.
13. ALL SUPPLY AIR VENTS SHALL BE EQUIPPED WITH AIR CONTROL DAMPERS AT THE REGISTER.
14. LOCATE OUTDOOR UNITS AS SHOWN ON ARCHITECTURAL DRAWINGS.
15. REFRIGERANT LINES SHALL BE SIZED BY UNIT MANUFACTURER AND INSTALLED ACCORDING TO MANUFACTURER'S INSTRUCTIONS.
16. FRESH AIR SHALL BE SUPPLIED TO EACH AIR HANDLER THROUGH EXTERIOR WALL DUCT SUPPLIED WITH A CONTROL DAMPER.
17. ALL ELECTRICAL, MECHANICAL, AND PLUMBING PENETRATING FIRE WALLS SHALL BE FIRE CAULKED. (PENETRATIONS THROUGH RATED CONSTRUCTION SHALL BE SEALED WITH A MATERIAL CAPABLE OF PREVENTING THE PASSAGE OF FLAMES AND HOT GASES WHEN TESTED IN ACCORDANCE WITH ASTM-E8-14).
18. ALL MECHANICAL SYMBOLS ARE DRAWN DIAGRAMMATICALLY. CONTRACTOR TO VERIFY WITH OWNER LOCATIONS OF VENTS, DAMPERS, REGISTERS, ETC.
19. FLEXIBLE DUCTWORK LENGTH NOT TO EXCEED 12'-0". SUPPORT FLEX DUCT TO PREVENT SAGGING
20. REFER TO REFLECTED CEILING PLAN FOR FINAL GRILLE AND DIFFUSER LOCATIONS AND COORDINATE AS REQUIRED.
21. FINAL LOCATION OF TEMPERATURE CONTROLS TO BE COORDINATED WITH OWNER AT JOB SITE.
22. PROVIDE AND INSTALL SMOKE DETECTORS AS APPROVED BY LOCAL AHJ'S. PLACE NEAR R/A AND S/A OPENINGS OF AHU AND PROVIDE, WITH ACCESS PANEL, WIRING BY ELECTRICAL CONTRACTOR.
23. FRESH AIR INTAKES ARE REQUIRED TO HAVE MOTORIZED OR GRAVITY DAMPERS TO SHUT OFF WHEN SYSTEM IS NOT RUNNING.
24. PROVIDE BIRD SCREENS AT ALL EXTERIOR MECHANICAL PENETRATIONS.
25. COORDINATE WALL MOUNTED THERMOSTAT LOCATIONS WITH ALL OWNER FURNISHED ITEMS EITHER WALL MOUNTED OR FLOOR MOUNTED AGAINST PARTITIONS. REFER TO ARCHITECTURAL DRAWINGS.
26. PROVIDE MIN 18 GA GALVANIZED SHEET METAL TO BLANK-OFF GABLE VENTS WHERE INTAKE/EXHAUST DUCTS OCCUR.

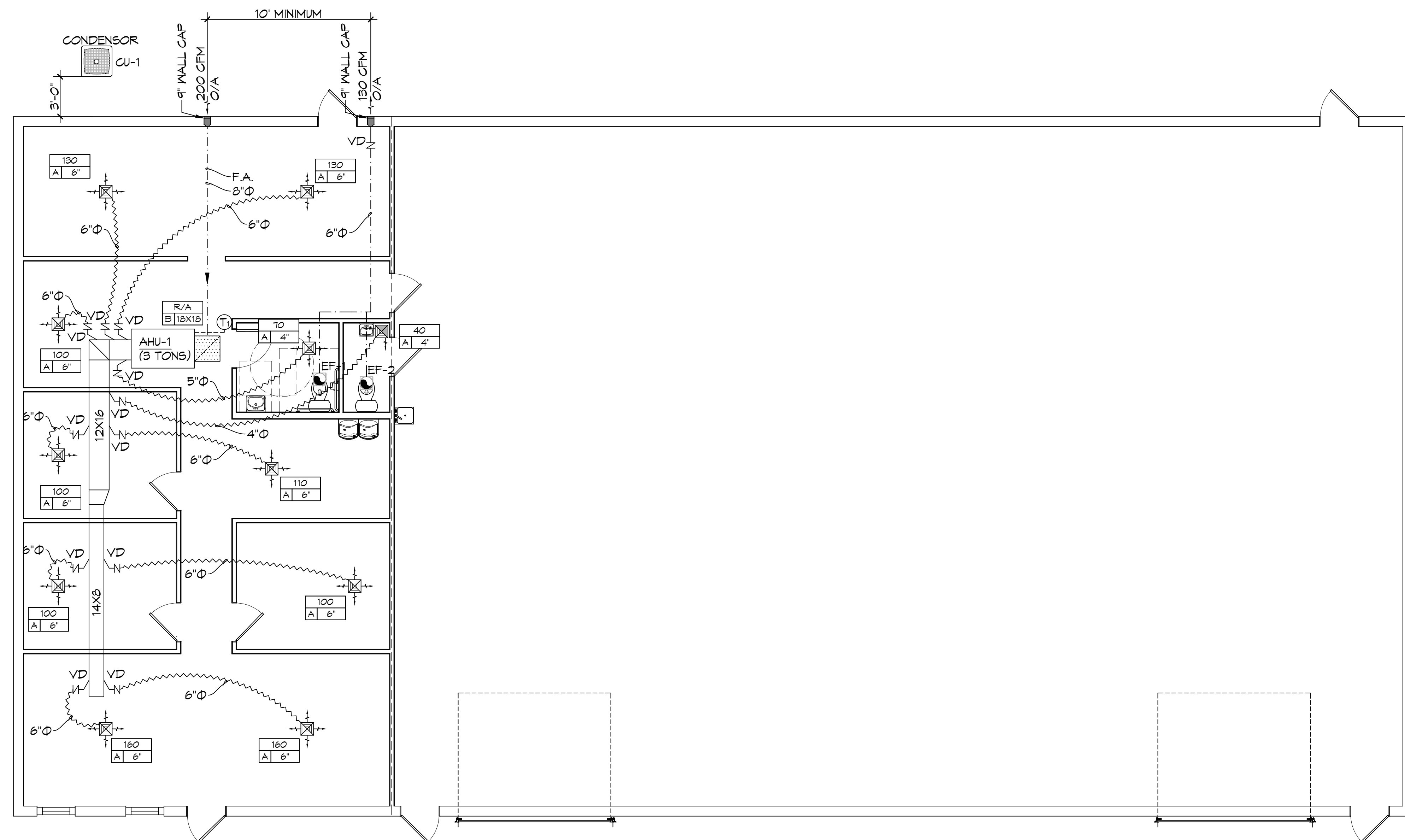
DAMMON ENGINEERING, INC.
 LOUISIANA & MISSISSIPPI
 www.dammonengineering.com
 info@dammonengineering.com
 Chief Engineer: Brian Mistich, PE
 554 Old Spanish Trail
 Slidell, LA 70468
 PH: 985.649.5832

REVISIONS	DATE	DESCRIPTION

SEAL:

NEW OFFICE WAREHOUSE
LEWIS A/C
 39104 COAST BOULEVARD
 SLIDELL, LA 70460
 JOB No: 1-12-2026
 DATE: 1-12-2026
 DRAWN BY: GSK
 CHECKED BY: GSK

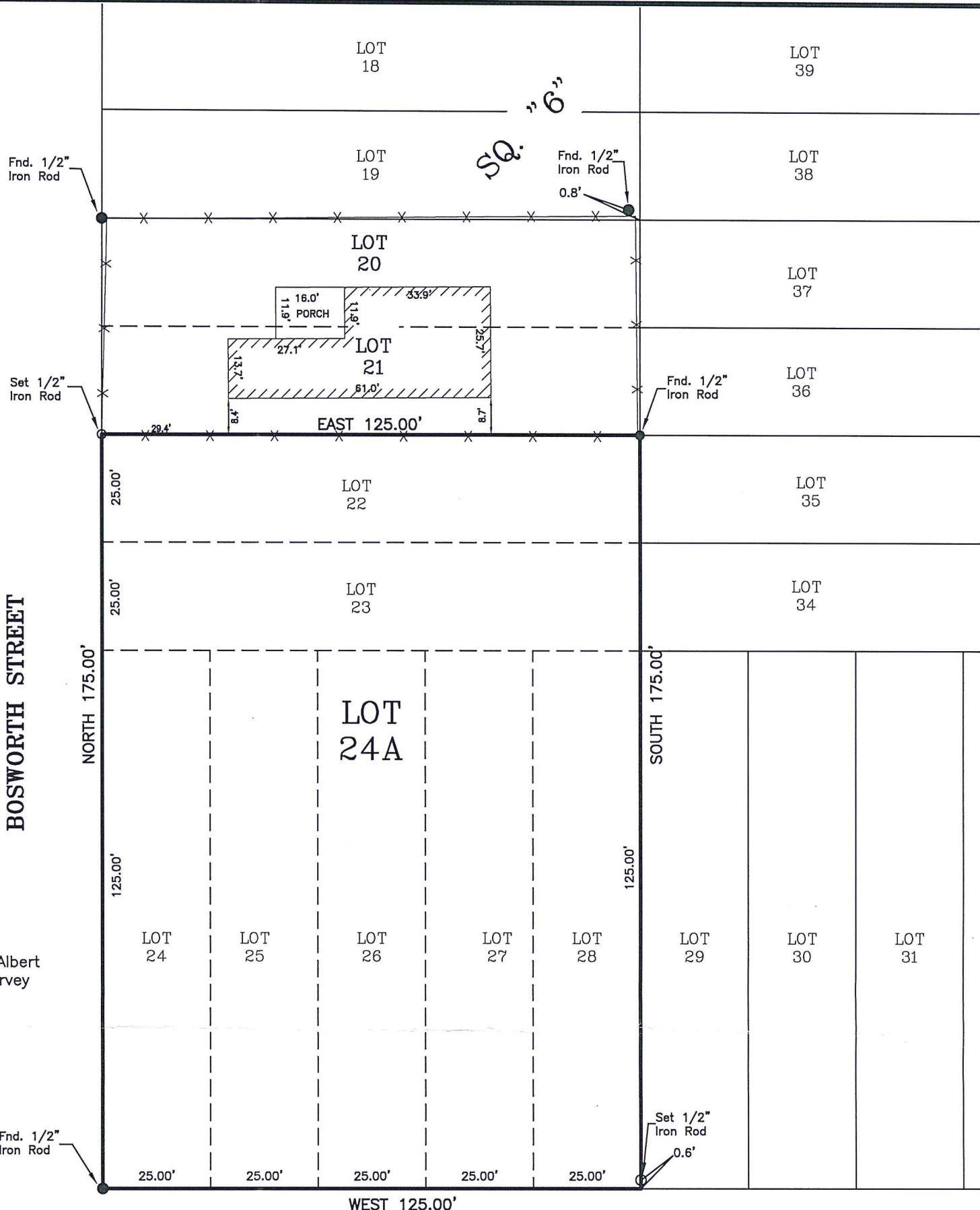
SHEET TITLE:
 MECHANICAL PLAN
 DRAWING NUMBER:
M101
 SHEET No: 10 of 1



22 WAREHOUSE ADDITION
 SCALE: 3/16"=1'-0"

MECHANICAL LEGEND

- 24"X24" 4-WAY SUPPLY AIR GRILLE
- 12X12 SUPPLY AIR GRILLE
- 3-WAY SUPPLY AIR GRILLE
- 24X24 RETURN AIR FILTER GRILLE
- 2-WAY SUPPLY AIR GRILLE
- EXHAUST FAN
- FIRE DAMPENER- AT EVERY FIRE RATED WALL
- THERMOSTAT
- IN LINE EXHAUST FAN WITH MOTOR
- ROUND FLEX DUCT, MAX. LENGTH 12'-0", MIN. R-6. DUCT SIZE AS FOLLOWS:
 250 CFM TO 350 CFM = 9"
 200 CFM TO 250 CFM = 8"
 150 CFM TO 200 CFM = 7"
 100 CFM TO 150 CFM = 6"
- DAMPER CONTROL (V,D)
- CFM
- MARK | NECK SIZE
- HVAC SUPPLY DUCT



REFERENCE: A Survey Plat by Albert A. Lovell Dated 0/24/1985 Survey # 98340.

APPROVED:

SECRETARY OF PLANNING COMMISSION DATE 2/2/24
DIRECTOR OF ENGINEERING DATE
Monique J. Bringol
CLERK OF COURT DATE
02-14-2024 6290A
DATE FILED FILE NO.

TOTAL AREA: 28,125 SQ. FT. OR 0.646 ACRES

Monique T Bringol, Deputy Clerk

COAST BOULEVARD

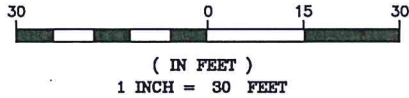
(60' R/W)

- RESTRICTIVE COVENANTS (R/C'S) BY OWNER:
- 1.) NO ACCESS (NEGATIVE) SERVITUDE ALONG BOSWORTH AVENUE.
 - 2.) IF LOT 24A IS ZONED I-1, THE ONLY PERMITTED USE THEREON SHALL BE OFFICE/WAREHOUSE (INCLUDING HVAC BUSINESS) WITH HEIGHT OF BUILDING NOT TO EXCEED 35'.
 - 3.) R/C'S CAN BE ENFORCED BY ALL ABUTTING PROPERTY OWNERS.
 - 4.) R/C'S CAN ONLY BE AMMENDED BY OWNER AND WITH THE APPROVAL OF ST. TAMMANY PARISH PLANNING COMMISSION.

AIR COMFORT PRODUCTS, INC.

BY: [Signature]
WILFRED E. LEWIS, JR.
DATED: 2-6-2024

GRAPHIC SCALE



BUILDING SETBACKS
(* Verify Prior to Construction)
Front Setback.....*
Side Setback.....*
Rear Setback.....*

ADDRESS: 38109 COAST BOULEVARD

I CERTIFY THAT THIS PLAT DOES REPRESENT AN ACTUAL GROUND SURVEY AND THAT TO THE BEST OF MY KNOWLEDGE NO ENCROACHMENTS EXIST EITHER WAY ACROSS ANY OF THE PROPERTY LINES, EXCEPT AS SHOWN.

PROPERTY IS SURVEYED IN ACCORDANCE WITH THE LOUISIANA "STANDARDS OF PRACTICE FOR PROPERTY BOUNDARY SURVEYS" FOR A CLASS C SURVEY. BEARINGS ARE BASED ON RECORD BEARINGS UNLESS NOTED OTHERWISE.

ENCUMBRANCES SHOWN HEREON ARE NOT NECESSARILY EXCLUSIVE. ENCUMBRANCES OF RECORD AS SHOWN ON TITLE OPINION OR TITLE POLICY WILL BE ADDED HERETO UPON REQUEST, AS SURVEYOR HAS NOT PERFORMED ANY TITLE SEARCH OR ABSTRACT.

F.I.R.M. No. 225205 0420 E
F.I.R.M. Date 04/21/1999
ZN: A5 B.F.E. 9
* Verify prior to construction with Local Governing Body.

DRAWING NO. 20230549

DATE: 01/03/2024

J.V. Burkes & Associates, Inc.

SURVEYING ENGINEERING • ENVIRONMENTAL
1805 Shortcut Highway
Slidell, Louisiana 70458
E-mail: jvbassoc@jvburkes.com

DRAWN BY: VLL CHECKED BY: JDL

SCALE: 1" = 30'

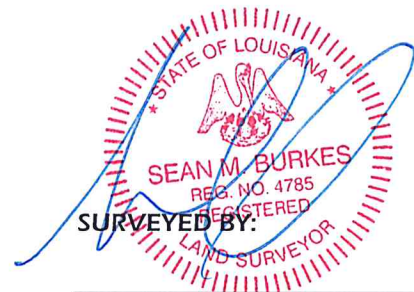
REVISED: 1/16/24 LOT DIMENSIONS
1/18/24 PER PARISH

Phone: 985-649-0075 Fax: 985-649-0154

DECLARATION IS MADE TO ORIGINAL PURCHASER OF THE SURVEY. IT IS NOT TRANSFERABLE TO ADDITIONAL INSTITUTIONS OR SUBSEQUENT OWNERS. SURVEY IS VALID ONLY IF PRINT HAS ORIGINAL SEAL OF SURVEYOR.

A RESUBDIVISION MAP OF LOTS 22 THRU 28, INTO LOT 24A, SQ.6, CENTRAL PARK S/D, SECTION A IN SECTION 23, T-9-S, R-14-E GREENSBURG LAND DISTRICT ST. TAMMANY PARISH, LOUISIANA

CERTIFIED TO: AIR COMFORTS PRODUCTS, INC.



SEAN M. BURKES
LA REG. No. 4785