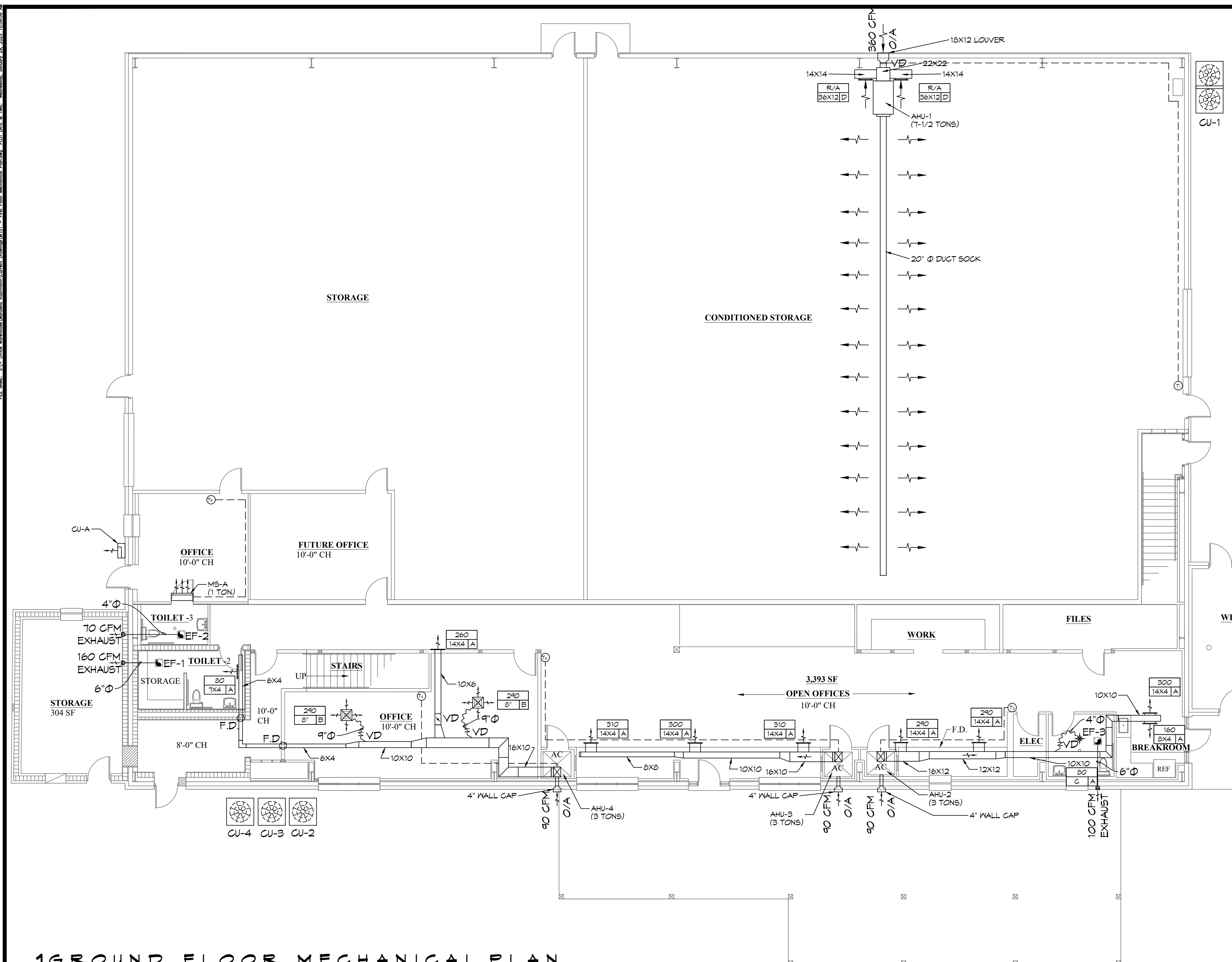


FILE NO. 14-001 OFFICE: Mechanical/MEP, Mechanical/MEP, Electrical/EL, Fire Alarm/FA, Fire Protection/FP, Fire Sprinkler/FS, Fire Suppression/FS, Fire Alarm/FA, Fire Protection/FP, Fire Sprinkler/FS, Fire Suppression/FS



THIS WORK SHALL MEET ALL HVAC CODES

- 2015 EDITION OF THE IMC
- 2021 IECC ENERGY CODE

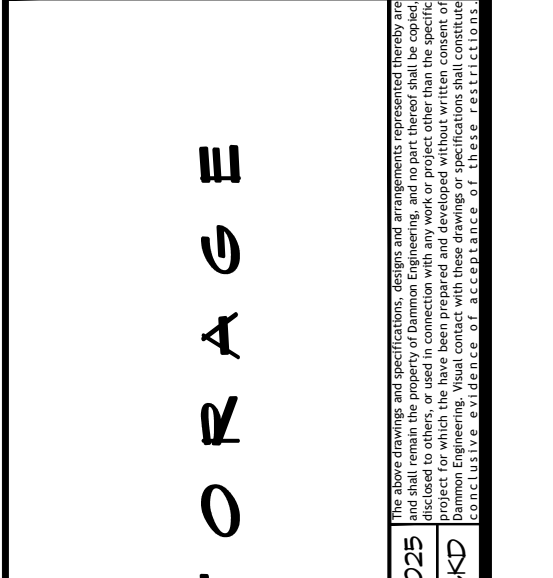
- ### GENERAL HVAC NOTES
- CONCEALED DUCTWORK TO BE GALVANIZED SHEET METAL WRAPPED WITH FIBROUS GLASS DUCT WRAP WITH FSK VAPOR BARRIER, MIN R-6. INSTALLED PER SMACNA STANDARDS. DUCT WORK IMMEDIATELY DOWNSTREAM FROM RTU SHALL BE LINED FOR SOUND ATTENUATION.
 - EXPOSED DUCTWORK TO BE GALVANIZED SHEET METAL LINED WITH FIBROUS GLASS DUCT LINER, MIN R-6. INSTALLED PER SMACNA STANDARDS.
 - ROUND FLEXIBLE DUCT TO BE UL-181, CLASS 1, AIR DUCT MATERIALS.
 - DUCT SIZES SHOWN ARE CLEAR INSIDE DIMENSIONS.
 - IN ALL SYSTEMS OVER 2000 CFM AND LESS THAN 15,000 CFM, SMOKE DETECTORS SHALL BE INSTALLED IN ACCORDANCE WITH NFPA 12E IN THE RETURN DUCT DOWNSTREAM OF THE AIR HANDLING UNIT AND ALL FILTERS TO AUTOMATICALLY STOP THE FAN.
 - PROVIDE UL LISTED 125°F FIRESTAT IN RETURN AIR OF EACH SYSTEM UNDER 2000 CFM TO SHUT DOWN THE FAN IN THE EVENT OF FIRE.
 - PROVIDE UL RATED FIRE DAMPERS WHERE REQUIRED AT ALL DUCT PENETRATIONS OF FIRE-RATED ASSEMBLIES AND WHERE REQUIRED BY CODE, INCLUDING OUTSIDE AIR INTAKES AND EXHAUST FANS.
 - CONDENSATE DRAINS TO BE PVC PIPE RUN TO PLUMBERS P-TRAP WITHIN FIVE FEET OF AIR HANDLING UNITS.
 - ALL AIR HANDLING SYSTEMS TO BE BALANCED TO ASSURE PROPER AIR FLOWS PER PLANS.
 - ALL THERMOSTATS TO BE AUTOMATIC CHANGEOVER WITH HEAT SWITCH.
 - EXHAUST FAN SHALL BE CONTROLLED BY A SWITCH ON THE WALL IN THE SAME LOCATION AS LIGHT SWITCH(S). PROVIDE BACK DRAFT DAMPER.
 - PROVIDE AND INSTALL WATER PROOF GRILLE VENT IN PROPER ROOF LOCATION FOR PLUMBING FIXTURE EXHAUST.
 - ALL SUPPLY AIR VENTS SHALL BE EQUIPPED WITH AIR CONTROL DAMPERS AT THE REGISTER.
 - LOCATE OUTDOOR UNITS AS SHOWN ON ARCHITECTURAL DRAWINGS.
 - REFRIGERANT LINES SHALL BE SIZED BY UNIT MANUFACTURER AND INSTALLED ACCORDING TO MANUFACTURER'S INSTRUCTIONS.
 - FRESH AIR SHALL BE SUPPLIED TO EACH AIR HANDLER THROUGH EXTERIOR WALL DUCT SUPPLIED WITH A CONTROL DAMPER.
 - ALL ELECTRICAL, MECHANICAL, AND PLUMBING PENETRATING FIRE WALLS SHALL BE FIRE CAULKED. PENETRATIONS THROUGH RATED CONSTRUCTION SHALL BE SEALED WITH A MATERIAL CAPABLE OF PREVENTING THE PASSAGE OF FLAMES AND HOT GASES WHEN TESTED IN ACCORDANCE WITH ASTM-E8-14).
 - ALL MECHANICAL SYMBOLS ARE DRAWN DIAGRAMMATICALLY. CONTRACTOR TO VERIFY WITH OWNER LOCATIONS OF VENTS, DAMPERS, REGISTERS, ETC.
 - FLEXIBLE DUCTWORK LENGTH NOT TO EXCEED 12'-0". SUPPORT FLEX DUCT TO PREVENT SAGGING.
 - REFER TO REFLECTED CEILING PLAN FOR FINAL GRILLE AND DIFFUSER LOCATIONS AND COORDINATE AS REQUIRED.
 - FINAL LOCATION OF TEMPERATURE CONTROLS TO BE COORDINATED WITH OWNER AT JOB SITE.
 - PROVIDE AND INSTALL SMOKE DETECTORS AS APPROVED BY LOCAL A.H.J.S. PLACE NEAR R/A AND S/A OPENINGS OF AHU AND PROVIDE, WITH ACCESS PANEL, WIRING BY ELECTRICAL CONTRACTOR.
 - FRESH AIR INTAKES ARE REQUIRED TO HAVE MOTORIZED OR GRAVITY DAMPERS TO SHUT OFF WHEN SYSTEM IS NOT RUNNING.
 - PROVIDE BIRD SCREENS AT ALL EXTERIOR MECHANICAL PENETRATIONS.
 - COORDINATE WALL MOUNTED THERMOSTAT LOCATIONS WITH ALL OWNER FURNISHED ITEMS EITHER WALL MOUNTED OR FLOOR MOUNTED AGAINST PARTITIONS. REFER TO ARCHITECTURAL DRAWINGS.
 - SEE ROOF PLAN FOR ALL ROOF PENETRATIONS.
 - PROVIDE MIN 18 GA GALVANIZED SHEET METAL TO BLANK-OFF GABLE VENTS WHERE INTAKE/EXHAUST DUCTS OCCUR.

DAMMON ENGINEERING, INC.

LOUISIANA & MISSISSIPPI

www.dammonengineering.com
554 Old Spanish Trail
Slidell, LA 70458
Chief Engineer: Brian Mistic
info@dammonengineering.com
PH: 985.649.5832

NO.	DATE	DESCRIPTION



NO REFERENCE TO STORAGE

9828 MANUELLA DRIVE, SLIDELL, LOUISIANA

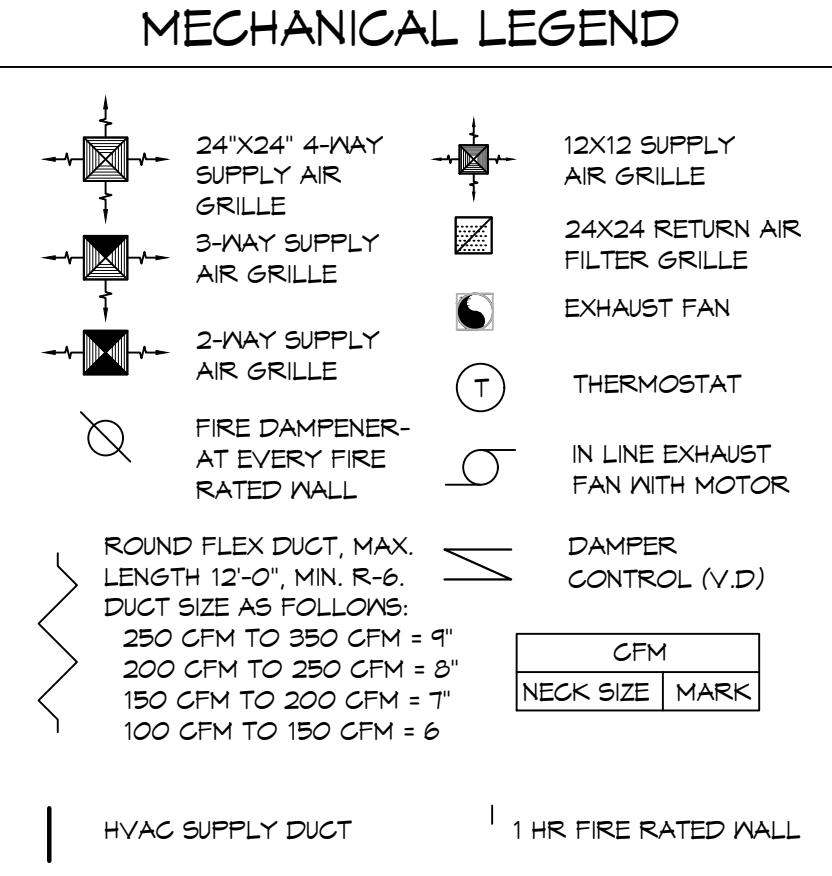
JOB NO: 14-001-2021
DATE: 01-07-2021
DRAWN BY: CND
CHECKED BY: CND

SHEET TITLE: FIRST FLOOR MECHANICAL PLAN

DRAWING NUMBER: M101

SHEET No: 4 of 6

1st FLOOR MECHANICAL PLAN
SCALE: 1/8"=1'-0"

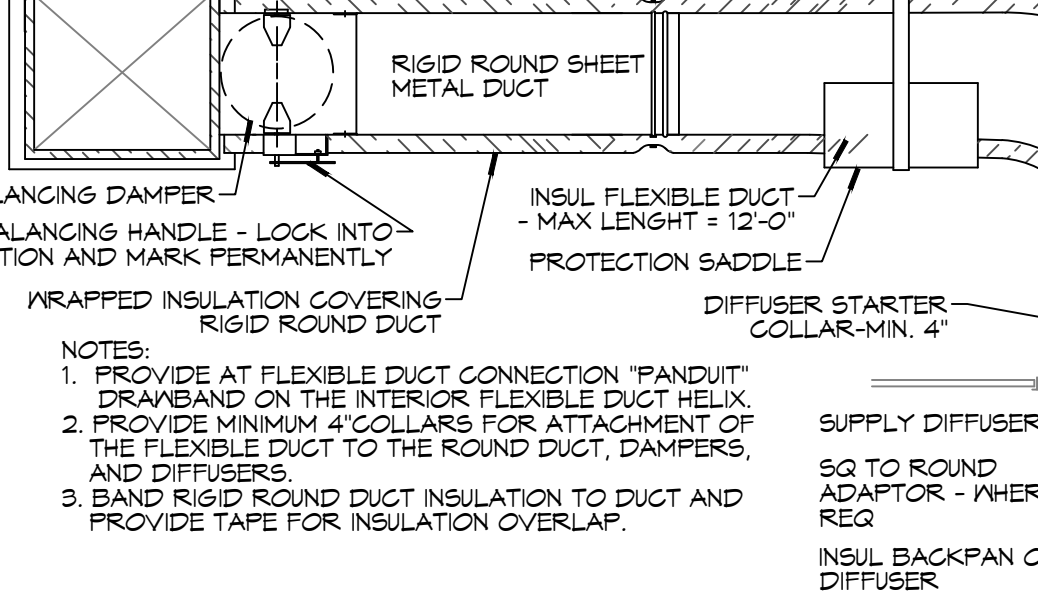
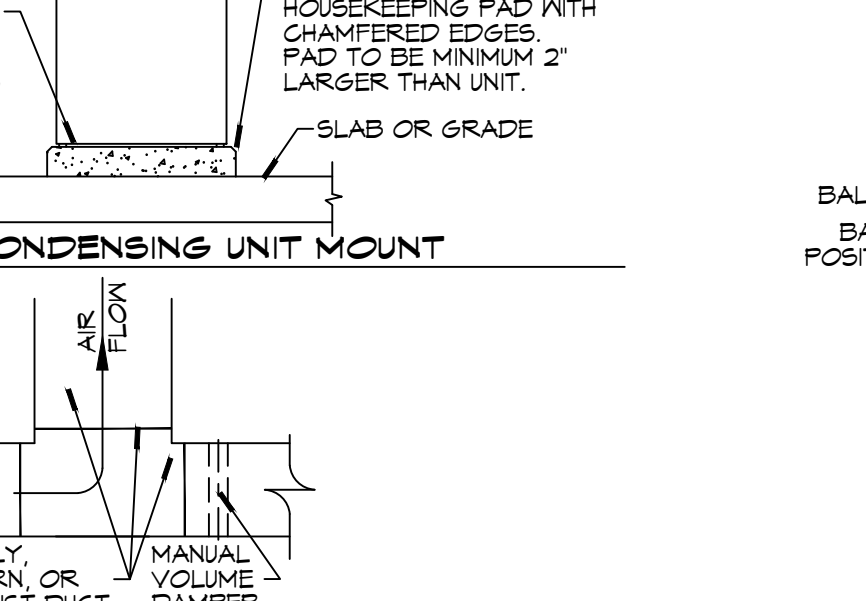
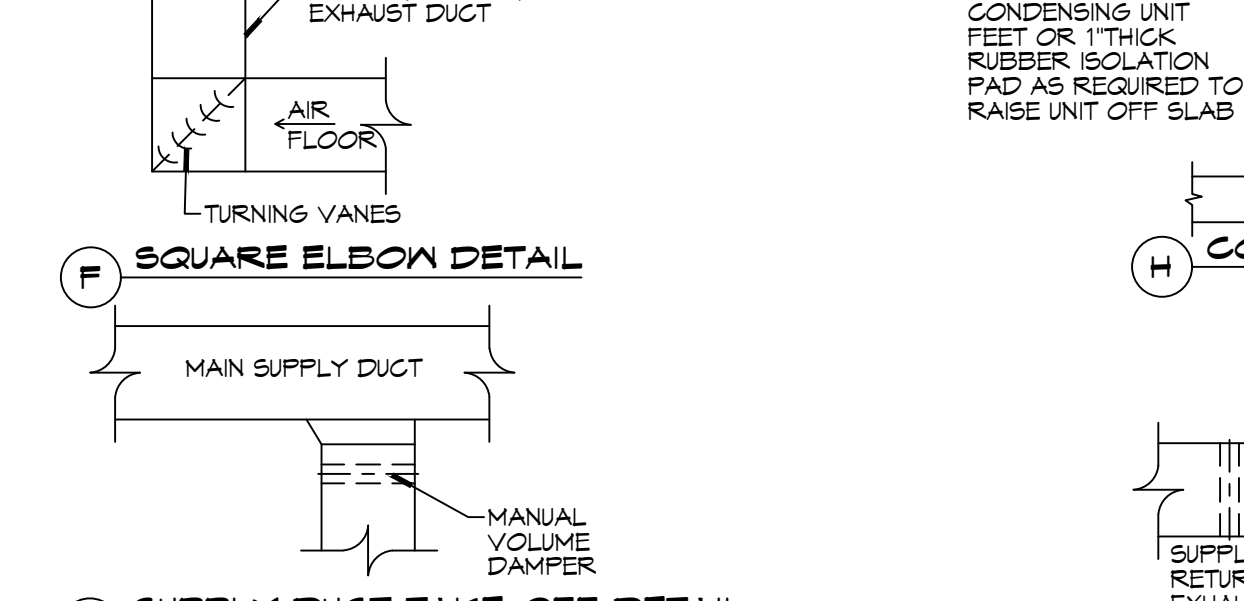
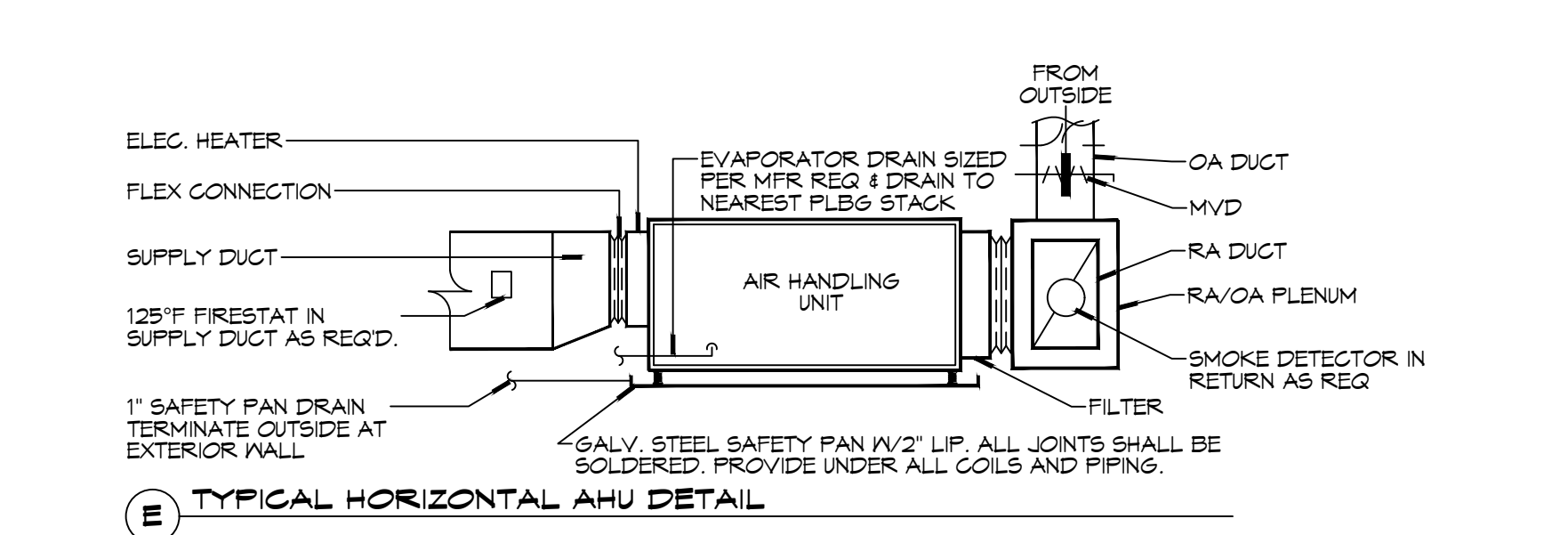


A/C SCHEDULE																						
Tag	Make	Model	Nominal Tons	Total CFM	AIR HANDLER			CONDENSER							Remarks							
					OACFM	Cooling TMBH	Motor HP	ESP (\"WC)	Aux. Heat KW	Power PH	MCA	MOP	Tag	Model		VAC	PH	MCA	MOP			
AHU-1	Tempstar	FAX091	7-1/2	3000	160	90	65.1	2.4	0.7	15	230	3	47.1	50	CU-1	Carrier Comfortmaker	CAS081	230	3	34.3	50	1, 2, 3, 4
AHU-2	Tempstar	FAMA436	3	1120	90	36	24.3	1/2	0.4	5	230	1	33.5	35	CU-2	Day & Night	N4A336	230	1	14.5	20	1, 2, 3, 4
AHU-3	Tempstar	FAMA436	3	920	90	36	19.9	1/2	0.4	5	230	1	33.5	35	CU-3	Day & Night	N4A336	230	1	14.5	20	1, 2, 3, 4
AHU-4	Tempstar	FAMA436	3	920	90	36	19.9	1/2	0.4	5	230	1	33.5	35	CU-4	Day & Night	N4A336	230	1	14.5	20	1, 2, 3, 4

DIFFUSER SCHEDULE			
TAG	SERVICE	NECK SIZE	DESCRIPTION
A	Supply Air	Ref. Plan	Louvered Supply Register, Double Deflection w/ Damper. Price Series 5200 or equal.
B	Supply Air	Ref. Plan	24" x 24" Square Cone Diffuser, Adjustable Pattern. Price Series 5C0 or equal.
C	Supply Air	Ref. Plan	12" x 12" Square Cone Diffuser, Adjustable Pattern. Price Series 5C0 or equal.
D	Return Air	Ref. Plan	Louvered Return Register, Fixed. Price Series 5350 or equal.

EXHAUST FAN SCHEDULE					
Tag	Service	Fan Airflow (CFM)	VAC	Power Ph	Make / Model
EF-1	Restroom Exhaust	160	120	1	1.5 Broan 503 or equal
EF-2	Restroom Exhaust	70	120	1	0.4 Broan A80 or equal

MIN-SPLIT SCHEDULE														
Tag	Make	Model	Airflow (CFM)	Tons (Nominal)	Tag	Make	Model	HEAT PUMP		System Power				
								Cooling (MBH)	Heating (MBH)					
MS-A	Mitsubishi	SVZ-RP12NA	400.0	1.0	CU-A	Mitsubishi	MUZ-EP12WA	11.9	14.9	230	1	9.3	15	1



2 DETAILS
SCALE: N.T.S.