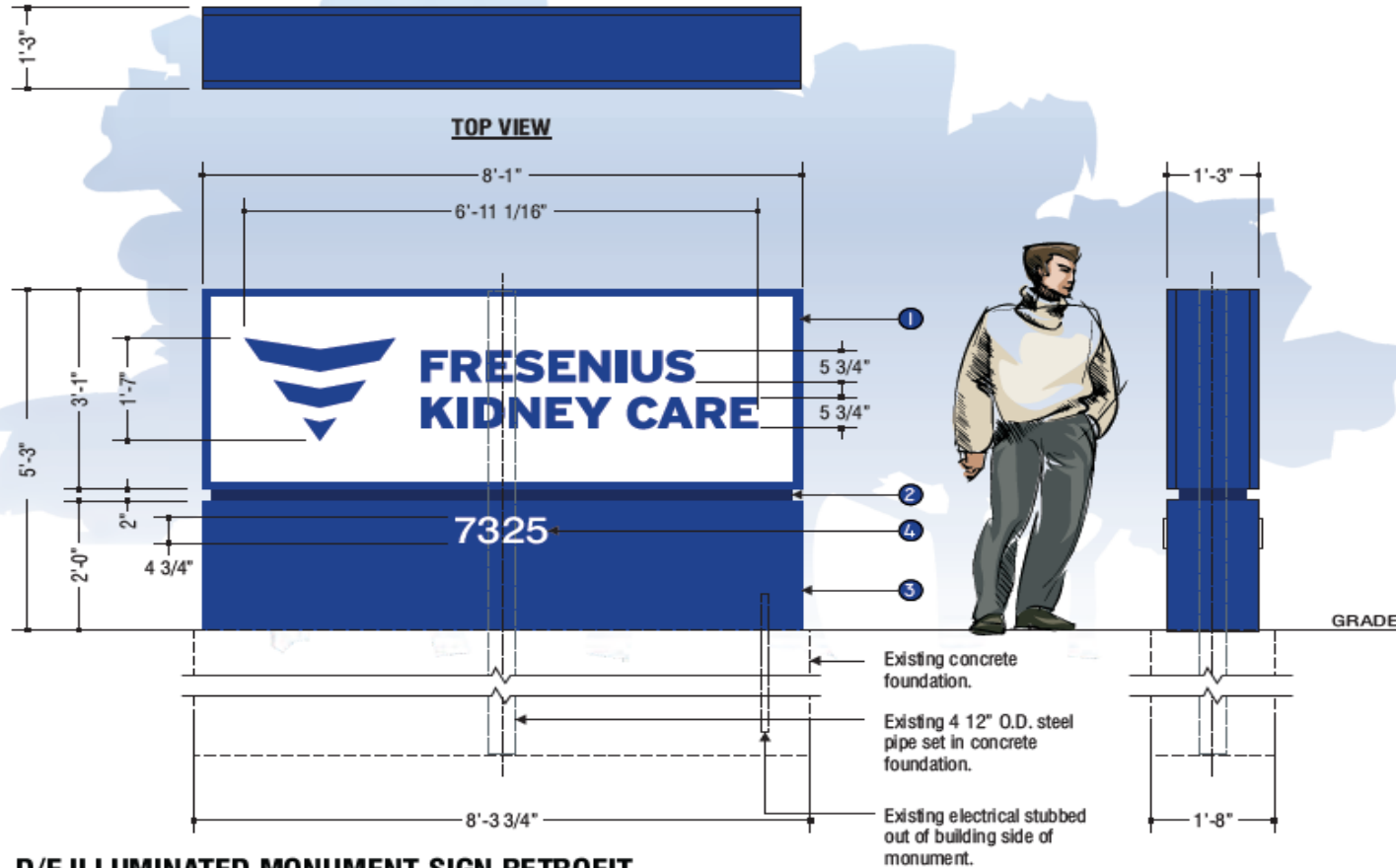


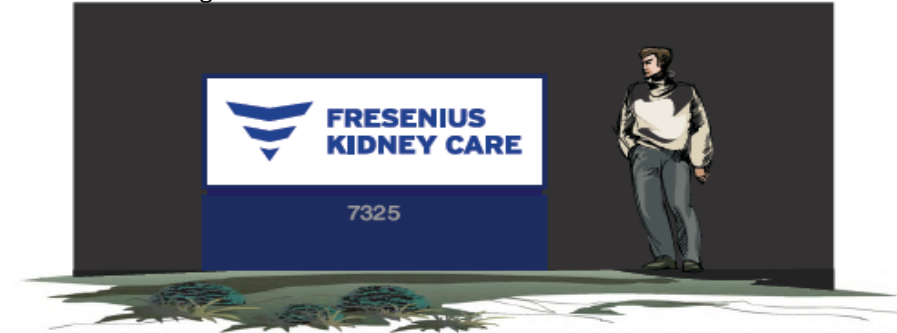
● Pre-existing/Proposed Monument Sign Placement



**General Specifications**

- 1 Main cabinet to be fabricated using welded tubular aluminum framing w/ aluminum filler & retainers. Faces to be White polycarbonate w/ flat cut 3M vinyl logotype graphics applied to 1st surface - SEE COLOR SCHEDULE. Cabinet retainers & filler to have a Corporate Blue painted finish - SEE COLOR SCHEDULE. Faces to be illuminated w/ Sloan White Prism LED's per manufacturing specifications. Monument sign is a standard Fresenius Mon 8 fabrication.  
**Note:**  
Cabinet to be installed w/ a saddle mount over existing steel pipe support - SEE Survey photos.
- 2 Fabricated 2" high .125 aluminum folded/welded reveal to have a Corporate Blue painted finish - SEE COLOR SCHEDULE.
- 3 Monument base to be fabricated w/ welded aluminum tube framing w/ .090 aluminum face & filler. Face & filler to have a Corporate Blue painted finish - SEE COLOR SCHEDULE.
- 4 Flat cut out 1/4" aluminum street address to be stud mounted flush to face of base. Numerals have a White painted finish - SEE COLOR SCHEDULE.
- 5 Existing 4 1/2" O. D. Steel pipe support is direct buried in existing foundation. Cabinet to sleeve over existing pipe.

Pre-existing concrete foundation to be reused



**D/F ILLUMINATED MONUMENT SIGN RETROFIT**

Area = 42.43 Sq. Ft.

Scale: 1/2" = 1'-0"

Existing



**EXISTING MONUMENT SIGN TO BE REMOVED**  
42.43 Square feet

Proposed



**PROPOSED MONUMENT SIGN**  
42.43 Square feet



ACCOUNT: **FRESENIUS KIDNEY CARE No. 1191**  
LOCATION: **7325 Westbank Expressway - Marrero, LA.**  
ACCT. REP: **M. Arroyo** DESIGNER: **MAK**  
DATE: **10/17/25**  
COMPANION FILES



REVISIONS:	INITIALS & DATE:
A	-
B	-
C	-
D	-
E	-
F	-
G	-
H	-
I	-
J	-

This is an original unpublished drawing submitted for use in connection with a project being planned for you by PSCO Kieffer. It is not to be reproduced, copied or exhibited in any fashion without the written permission of PSCO Kieffer.

Phone: 920.458.4394  
pscosingroup.com

**PK2500628A**