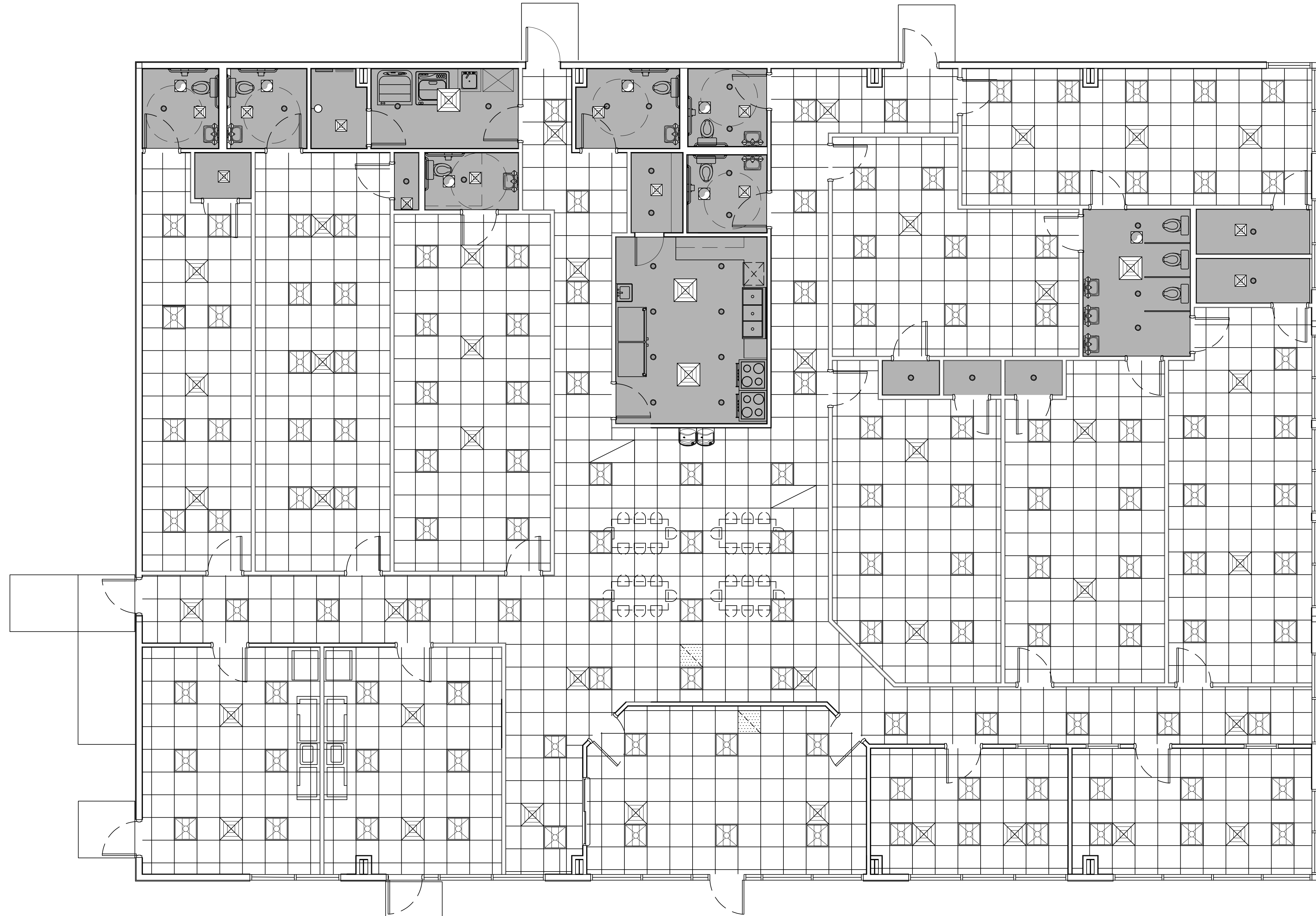

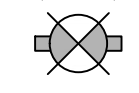
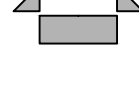
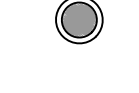
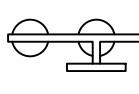
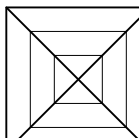
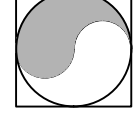
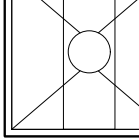
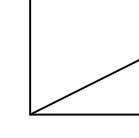


P.L. 5832, A.S. - Commercial Structures, Inc. 5040 General Road, Suite 100, Metairie, LA 70002, October 13, 2023, 2:30 PM



4 REFLECTED CEILING PLAN
 SCALE: 1/4" = 1'-0"

REFLECTED CEILING LEGEND

-  NEW 2X2 CEILING TILE
-  EXIT LIGHT
-  EMERGENCY LIGHT
-  LED CAN LIGHT
-  HOLLYWOOD LED LIGHT
-  SUPPLY AIR GRILLE
-  EXHAUST FAN
-  2X2 LED LIGHT FIXTURE
-  RETURN AIR GRILLE

DAMMON

ENGINEERING, INC.

LOUISIANA & MISSISSIPPI

www.dammonengineering.com
 info@dammonengineering.com
 PH: 985.649.5832

Chief Engineer: Brian Misch, PE
 554 Old Spanish Trail
 Slidell, LA 70458

#	DESCRIPTION	DATE



NEW DAYCARE

THREE PEAS IN A POD EARLY LEARNING CENTER

2465 GAUGE BLVD.
 SLIDELL, LA 70461

JOB No: 04-30-2023
 2511 DATE: 04-30-2023
 LJP CHECKED BY: JMS

SHEET TITLE:
REFLECTED CEILING PLAN

DRAWING NUMBER:

A102

SHEET No: 6 of 12