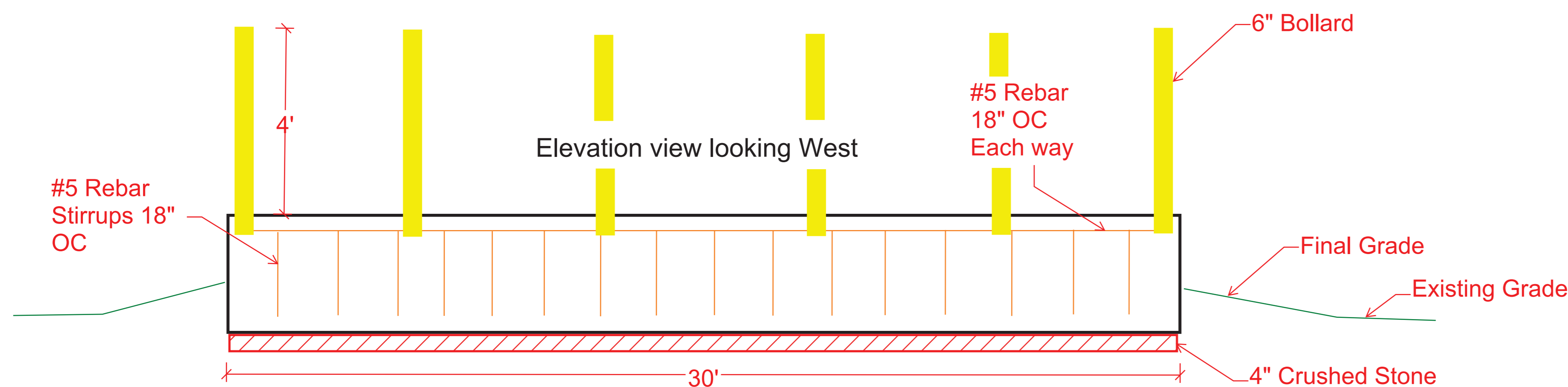
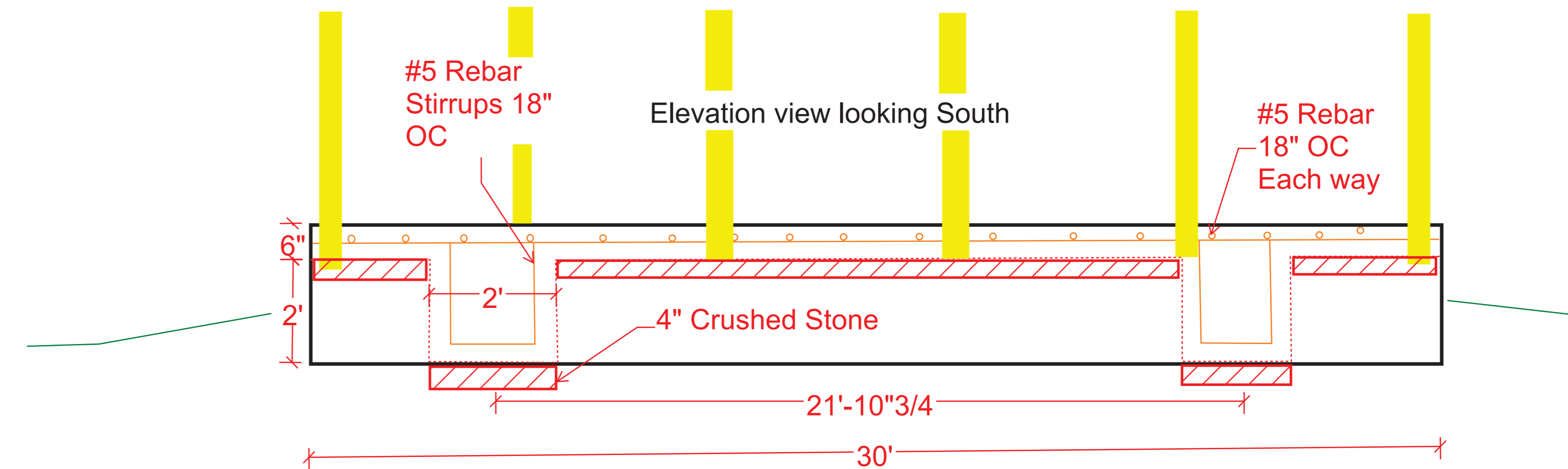
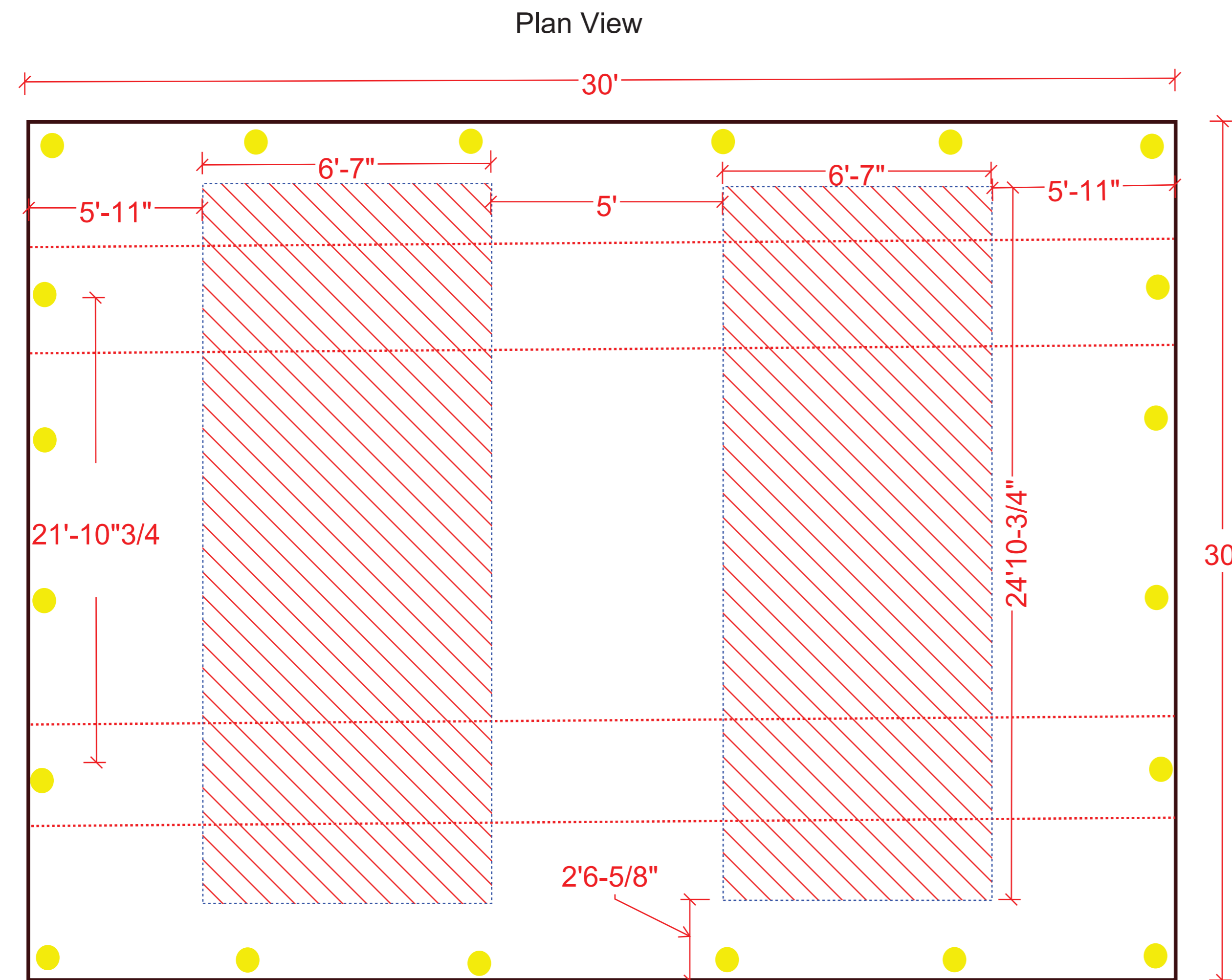




# Binderwald MAINTENANCE



- NOTES:
1. Concrete shall be 4k psi.
  2. Rebar shall be #5 and spaced 18" on center each way.
  3. 4" of crushed stone placed on top of undisturbed soil and compacted.
  4. Slab shall be 6" thick with 2'x2' concrete footers as shown on the attachment.
  5. All bollards will be 6" pipe concreted into the slab and spaced NO MORE than 5' from bollard to bollard.
  6. Concrete pad shall have negligible effects on site drainage.

Drawing is NOT to scale.



**DAMMON**  
ENGINEERING, INC.  
LOUISIANA & MISSISSIPPI

Airport Barn Fuel Tanks  
34783 Grantham College Rd  
Slidell, LA 70461