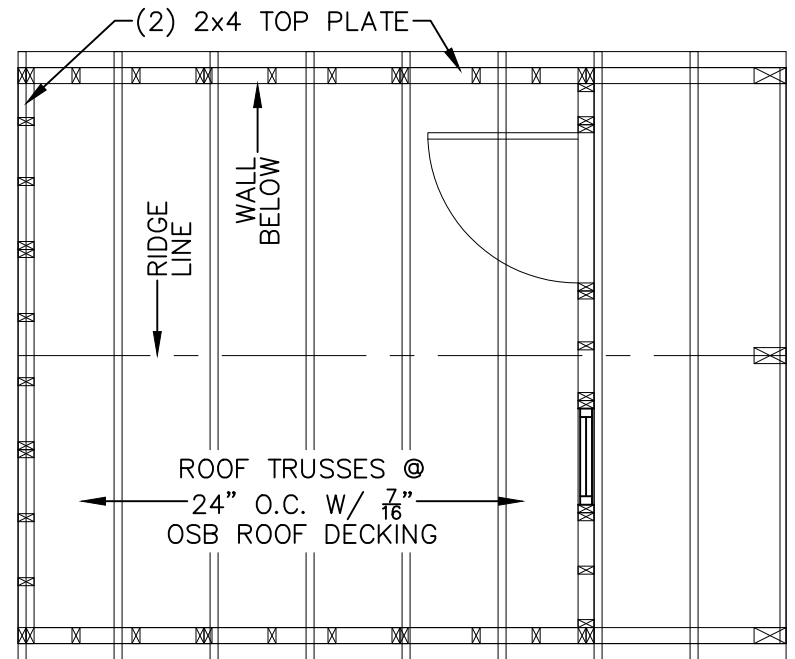


ROOF FRAMING PLAN



ROOF FRAMING PLAN W/ PORCH

ROOF FRAMING NOTE	COLUMN NOTES
1. INSTALL 7/16" ROOF SHEATHING WITH LONG DIMENSION SPANNING TRUSSES. 2. FASTEN 7/16" ROOF SHEATHING WITH 2" RING-SHANK NAILS @ 6" O.C.	1. USE METAL COLUMN CLIPS TOP AND BOTTOM TYPICAL 2. USE (4) #8x3" WOOD SCREWS EACH SIDE OF THE COLUMN TOP AND BOTTOM TO INSTALL THE COLUMN CLIPS 3. GLUE TOP PLATES TOGETHER WITH LIQUID NAIL (LN-903) CONTINUOUS ACROSS OVERHANG AND 36" MINIMUM INTO ENCLOSED SPACE 4. NAIL TOP PLATES TOGETHER WHERE GLUED WITH 2 ROWS OF 8d NAILS AT 6" OC 5. PROVIDE A 4x6 PT COLUMN SUPPORT FLUSH WITH THE TOP OF FLOOR JOISTS AND SPANNING THE ENTIRE FIRST FLOOR JOIST SPAN (NAIL WITH 8d NAILS ON ENDS AND ALONG THE SIDE)
GENERAL NOTES	
2x4 UPPER TOP PLATE W/ (2)3x0.120Ø NAILS @ 16" O.C. TO 2x4 LOWER TOP PLATE	



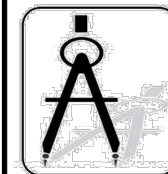
**APEX BUILDERS AND ASSOCIATES**

504-858-6544

DRAWN BY: TNT    SCALE: 1/4" = 1'-0"    DATE: 02-14-2022

SHEET TITLE: ROOF FRAMING PLAN

DRAWING NUMBER: **S-105**



**DAMMON ENGINEERING, INC.**

554 Old Spanish Trail Slidell, LA 70458 (985) 649-5832

Chief Engineer: Brian Mistich, PE  
 554 Old Spanish Trail  
 Slidell, LA 70458

www.dammonengineering.com  
 info@dammonengineering.com  
 PHONE: 985-649-5832